

# Monthly Housing Statistics

## June 2018



### SINGLE FAMILY HOMES

Median Sales Price	
\$782,388	-1.6%
Closed Sales	
365	-1.4%
Average Sales Price	
\$911,866	-0.9%

### CONDOS

Median Sales Price	
\$420,000	+5.0%
Closed Sales	
547	+2.1%
Average Sales Price	
\$508,805	+11.6%

### INDEX:

<b>Monthly Indicators</b>	<b>2</b>
Closed Sales	3
Median Sales Price	4
Median Days on Market	5
New Listings	6
Pending Sales	7
Months of Inventory	8
Active Listings	9
Average Sales Price	10
% of Original Listing Price Received	11
Active Continue to Show	12
<b>Housing Supply Overview</b>	<b>13</b>
Pending Sales (by price range)	14-15
Median Days on Market (by price range)	16-17
% of list price received (by price range)	18-19
Inventory of Homes (by price range)	20-21
Months Supply of Inventory (price range)	22-23
<b>Historical Graphs</b>	<b>24-25</b>
<b>Price Graphs</b>	<b>26-27</b>

# Monthly Indicators

June 2018

	Single Family Homes					
	Jun-18	Jun-17	%	YTD-18	YTD-17	%
Closed Sales	365	370	-1.4%	1,760	1,789	-1.6%
Median Sales Price	\$782,388	\$795,000	-1.6%	\$779,000	\$750,000	3.9%
Median Days on Market	16	12	33.3%	16	16	0.0%
New Listings	504	467	7.9%	2,751	2,685	2.5%
Pending Sales	536	613	-12.6%	2,771	3,178	-12.8%
Months of Inventory	2.7	2.7	0.0%	--	--	--
Active Listings	1,361	1,262	7.8%	--	--	--
Average Sales Price	\$911,866	\$919,812	-0.9%	\$980,772	\$916,672	7.0%
% of Original Listing Price Received	99.0%	99.5%	-0.5%	98.0%	98.7%	-0.7%

	Condos					
	Jun-18	Jun-17	%	YTD-18	YTD-17	%
Closed Sales	547	536	2.1%	2,833	2,797	1.3%
Median Sales Price	\$420,000	\$400,000	5.0%	\$425,000	\$399,000	6.5%
Median Days on Market	18	13	38.5%	18	16	12.5%
New Listings	710	692	2.6%	4,220	4,026	4.8%
Pending Sales	761	829	-8.2%	4,161	4,481	-7.1%
Months of Inventory	3.0	2.8	7.1%	--	--	--
Active Listings	2,123	1,882	12.8%	--	--	--
Average Sales Price	\$508,805	\$455,873	11.6%	\$502,770	\$463,387	8.5%
% of Original Listing Price Received	97.7%	100.0%	-2.3%	99.1%	99.8%	-0.7%

SOURCE: Honolulu Board of REALTORS®, compiled from MLS data.

Page 2

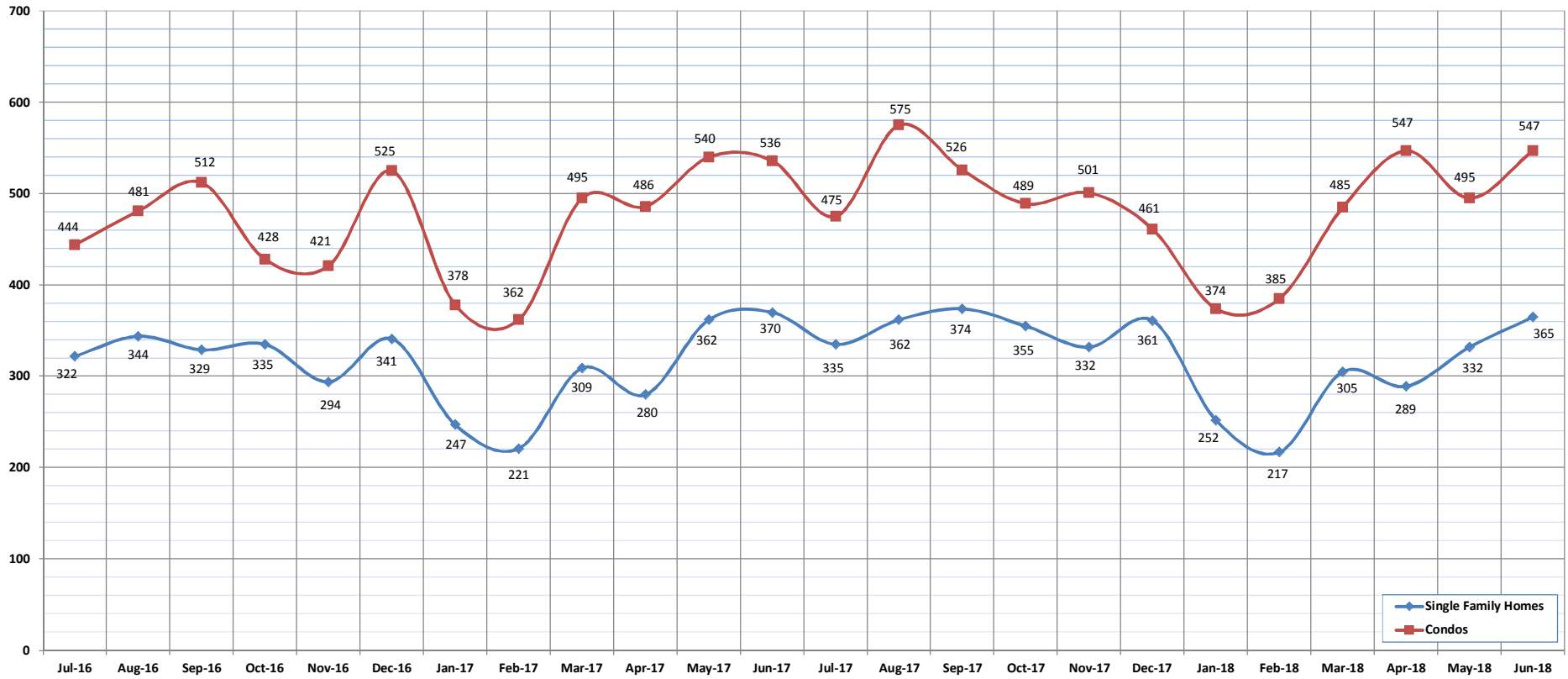


# Closed Sales

June-18

OAHU, HAWAII

(A count of all properties that have closed in a given month.)



	Jul-16	Aug-16	Sep-16	Oct-16	Nov-16	Dec-16	Jan-17	Feb-17	Mar-17	Apr-17	May-17	Jun-17	Jul-17	Aug-17	Sep-17	Oct-17	Nov-17	Dec-17	Jan-18	Feb-18	Mar-18	Apr-18	May-18	Jun-18
Closed Sales: Single Family Homes	322	344	329	335	294	341	247	221	309	280	362	370	335	362	374	355	332	361	252	217	305	289	332	365
Closed Sales: Condos	444	481	512	428	421	525	378	362	495	486	540	536	475	575	526	489	501	461	374	385	485	547	495	547
Closed Sales: Total	766	825	841	763	715	866	625	583	804	766	902	906	810	937	900	844	833	822	626	602	790	836	827	912

SOURCE: Honolulu Board of REALTORS®, compiled from MLS data.

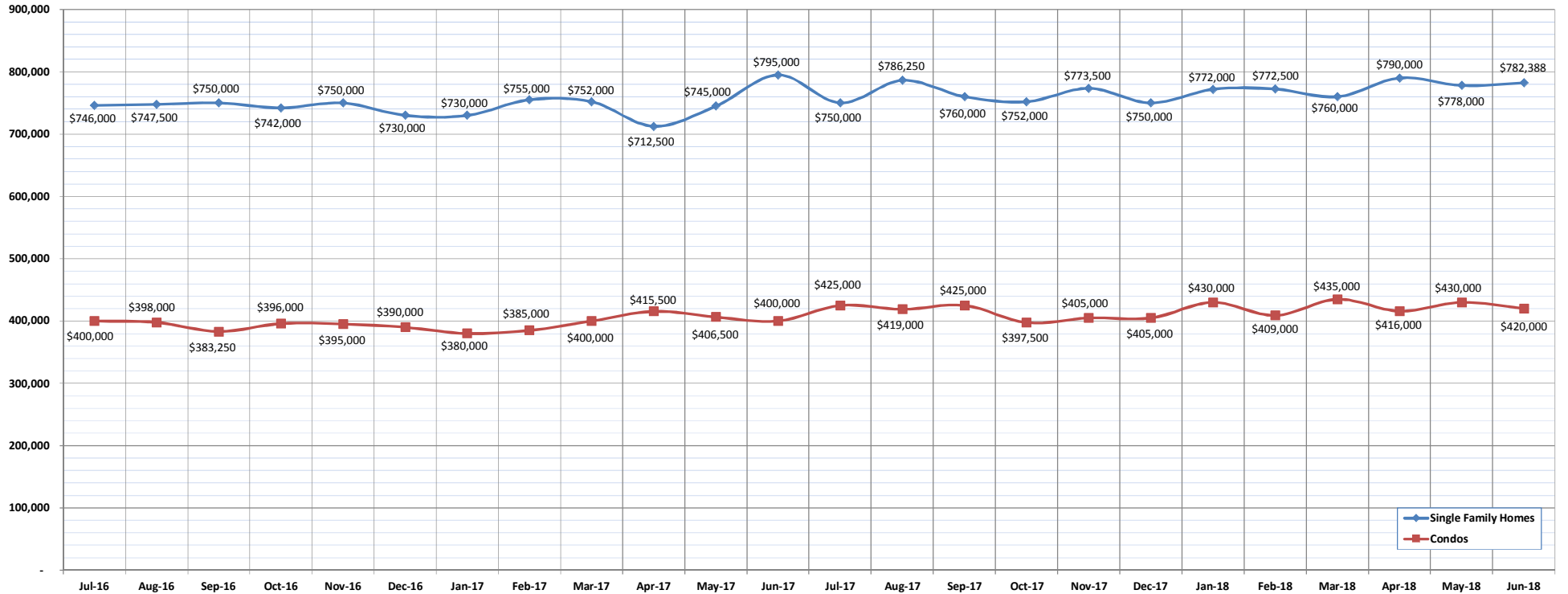


# Median Sales Price

June-18

OAHU, HAWAII

(The median sales price for all closed properties in a given month.)



	Jul-16	Aug-16	Sep-16	Oct-16	Nov-16	Dec-16	Jan-17	Feb-17	Mar-17	Apr-17	May-17	Jun-17	Jul-17	Aug-17	Sep-17	Oct-17	Nov-17	Dec-17	Jan-18	Feb-18	Mar-18	Apr-18	May-18	Jun-18
Median Sales Price : SFH	746,000	747,500	750,000	742,000	750,000	730,000	730,000	755,000	752,000	712,500	745,000	795,000	750,000	786,250	760,000	752,000	773,500	750,000	772,000	772,500	760,000	790,000	778,000	782,388
Median Sales Price: Condos	400,000	398,000	383,250	396,000	395,000	390,000	380,000	385,000	400,000	415,500	406,500	400,000	425,000	419,000	425,000	397,500	405,000	405,000	430,000	409,000	435,000	416,000	430,000	420,000

SOURCE: Honolulu Board of REALTORS® , compiled from MLS data.

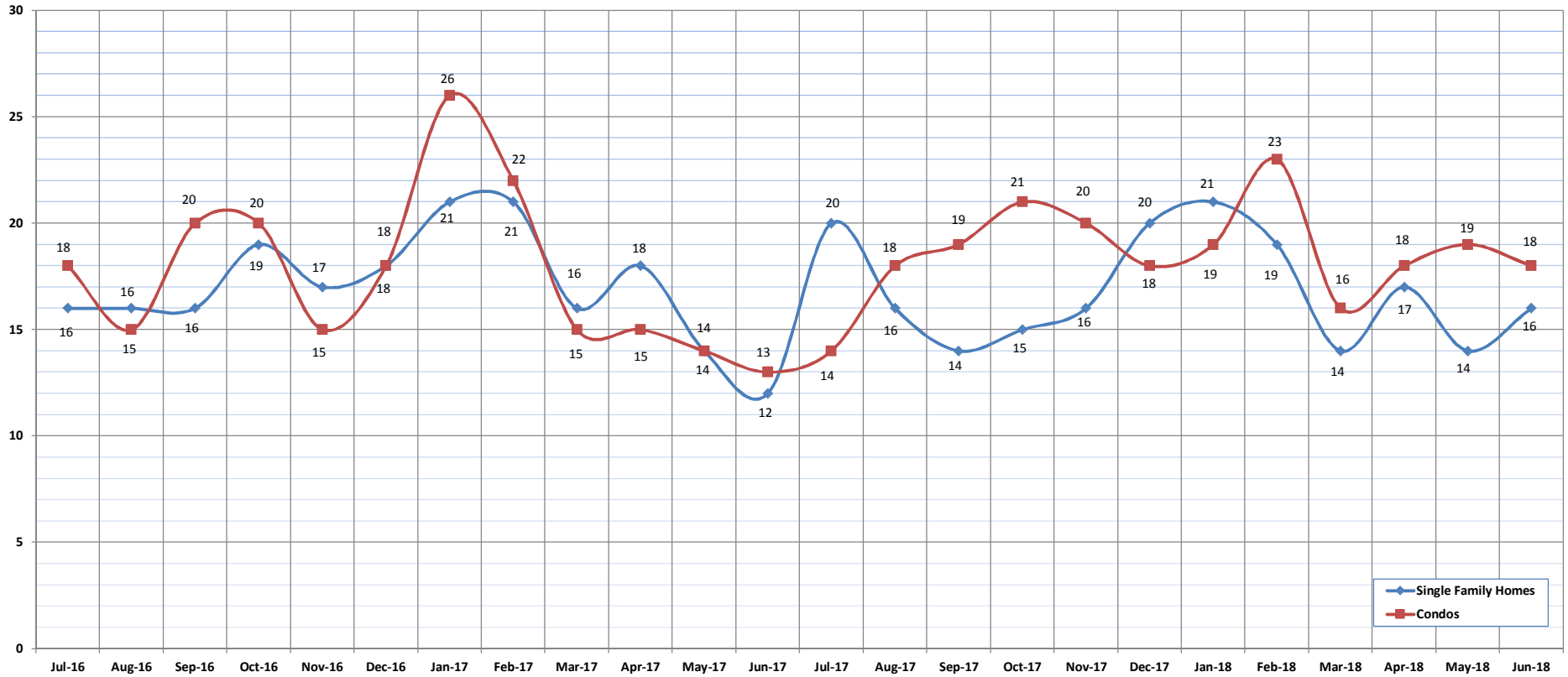


# Median Days on Market

June-18

OAHU, HAWAII

(The median number of days between when a property is first listed and when an offer is accepted.)



	Jul-16	Aug-16	Sep-16	Oct-16	Nov-16	Dec-16	Jan-17	Feb-17	Mar-17	Apr-17	May-17	Jun-17	Jul-17	Aug-17	Sep-17	Oct-17	Nov-17	Dec-17	Jan-18	Feb-18	Mar-18	Apr-18	May-18	Jun-18
Median Days on Market: SFH	16	16	16	19	17	18	21	21	16	18	14	12	20	16	14	15	16	20	21	19	14	17	14	16
Median Days on Market: Condos	18	15	20	20	15	18	26	22	15	15	14	13	14	18	19	21	20	18	19	23	16	18	19	18

SOURCE: Honolulu Board of REALTORS®, compiled from MLS data.

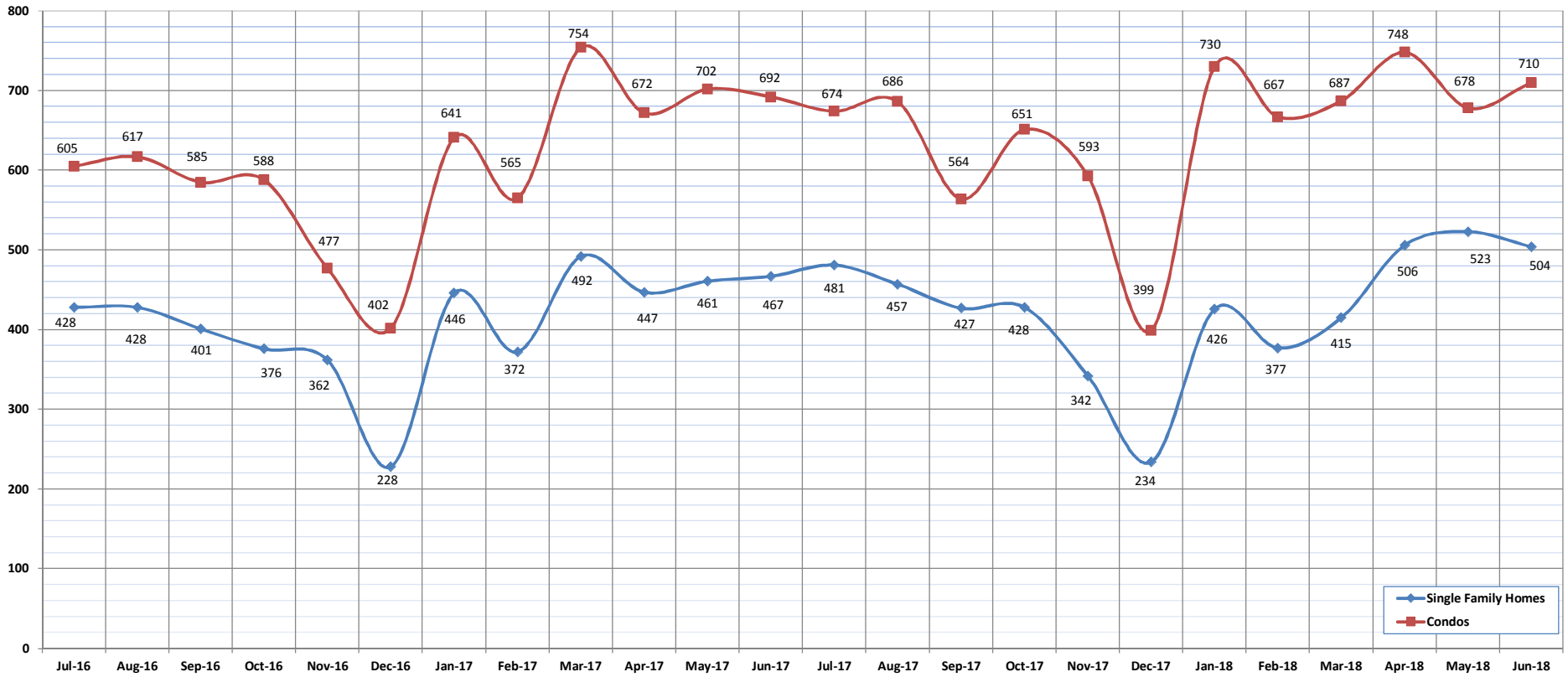


# New Listings

June-18

OAHU, HAWAII

(A count of the properties that have been newly listed on the market in a given month.)



	Jul-16	Aug-16	Sep-16	Oct-16	Nov-16	Dec-16	Jan-17	Feb-17	Mar-17	Apr-17	May-17	Jun-17	Jul-17	Aug-17	Sep-17	Oct-17	Nov-17	Dec-17	Jan-18	Feb-18	Mar-18	Apr-18	May-18	Jun-18
<b>New Listings: Single Family Homes</b>	428	428	401	376	362	228	446	372	492	447	461	467	481	457	427	428	342	234	426	377	415	506	523	504
<b>New Listings: Condos</b>	605	617	585	588	477	402	641	565	754	672	702	692	674	686	564	651	593	399	730	667	687	748	678	710
<b>New Listings: Total</b>	1033	1045	986	964	839	630	1087	937	1246	1119	1163	1159	1155	1143	991	1079	935	633	1156	1044	1102	1254	1201	1214

SOURCE: Honolulu Board of REALTORS®, compiled from MLS data.

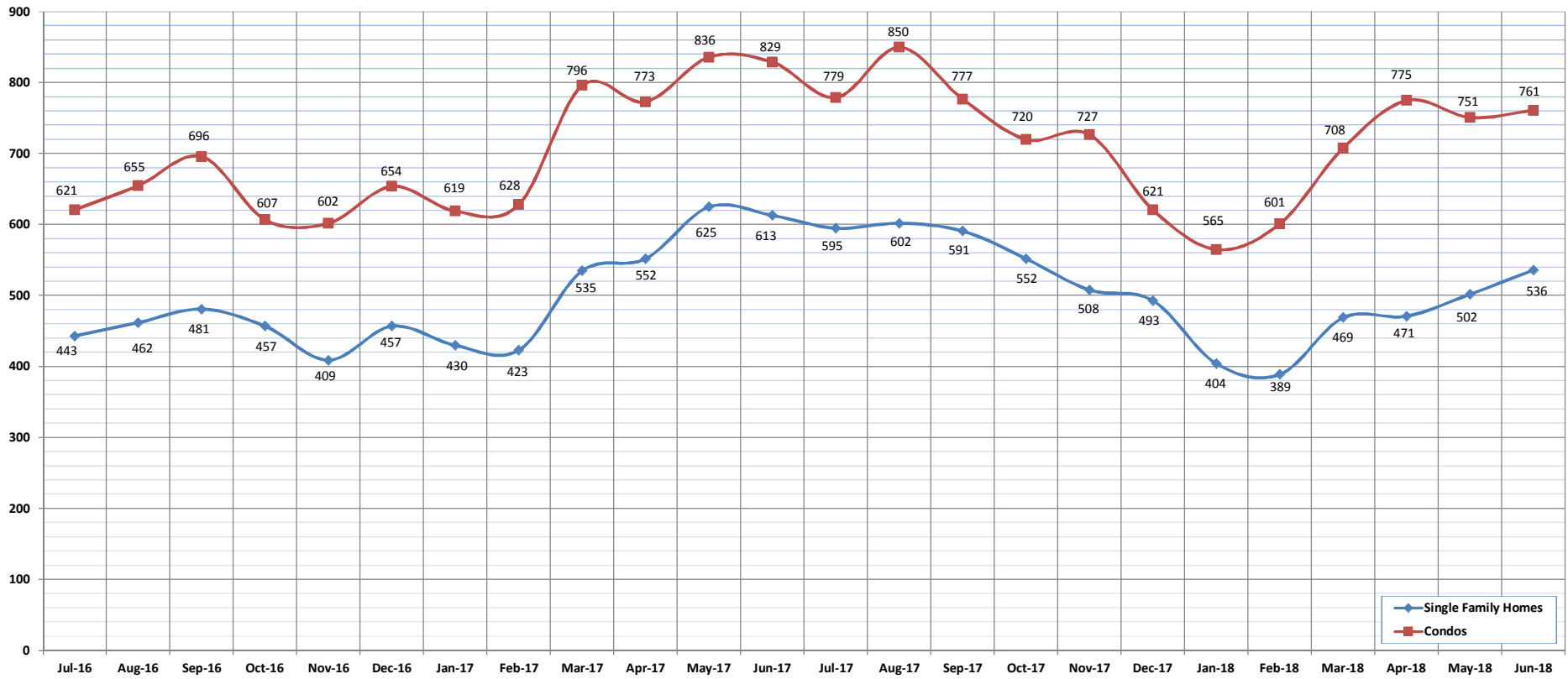


# Pending Sales

June-18

OAHU, HAWAII

(A count of the properties that have offers accepted on them in a given month.)



	Jul-16	Aug-16	Sep-16	Oct-16	Nov-16	Dec-16	Jan-17	Feb-17	Mar-17	Apr-17	May-17	Jun-17	Jul-17	Aug-17	Sep-17	Oct-17	Nov-17	Dec-17	Jan-18	Feb-18	Mar-18	Apr-18	May-18	Jun-18
Pending Sales: Single Family Homes	443	462	481	457	409	457	430	423	535	552	625	613	595	602	591	552	508	493	404	389	469	471	502	536
Pending Sales: Condos	621	655	696	607	602	654	619	628	796	773	836	829	779	850	777	720	727	621	565	601	708	775	751	761
Pending Sales: Total	1064	1117	1177	1064	1011	1111	1049	1051	1331	1325	1461	1442	1374	1452	1368	1272	1235	1114	969	990	1177	1246	1253	1297

SOURCE: Honolulu Board of REALTORS®, compiled from MLS data.

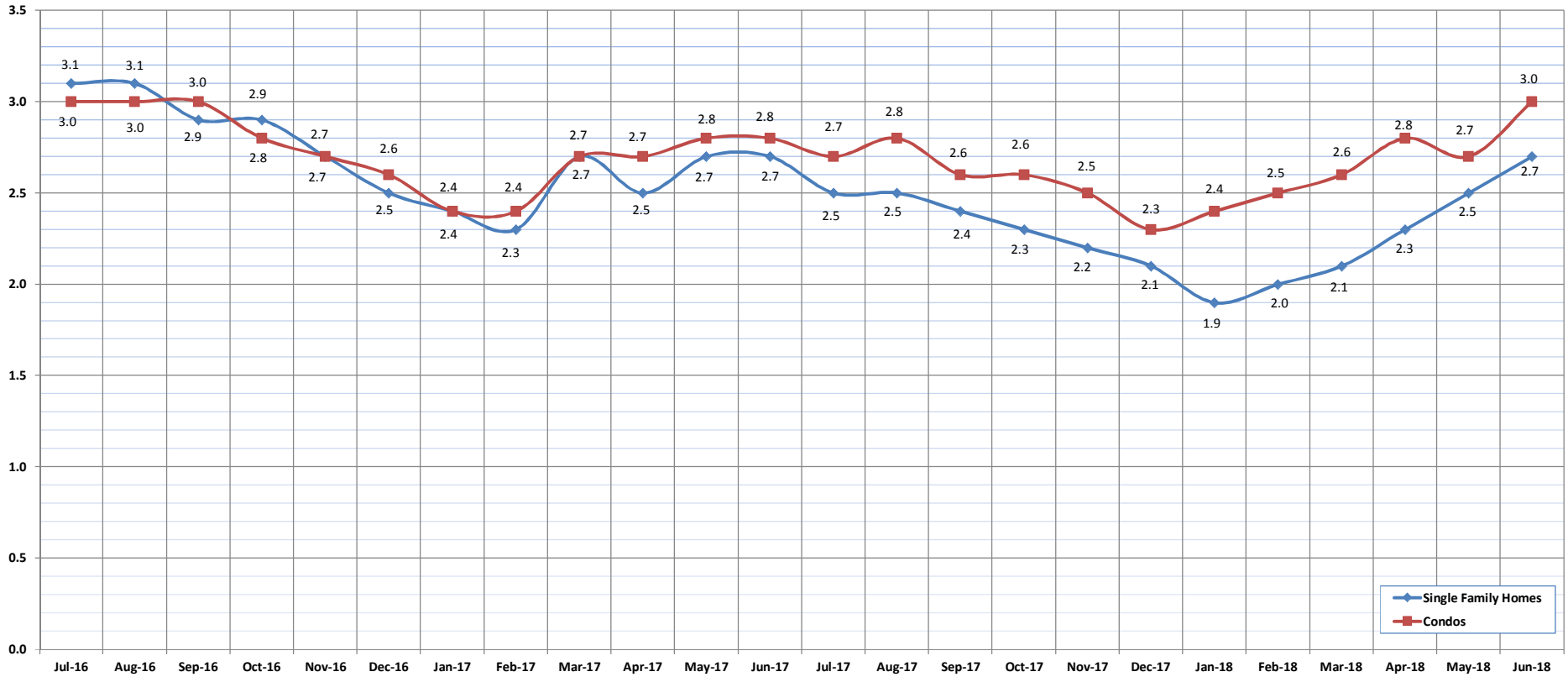


# Months of Inventory

June-18

OAHU, HAWAII

(Compares the number of active listings available to the average monthly pending sales.)



	Jul-16	Aug-16	Sep-16	Oct-16	Nov-16	Dec-16	Jan-17	Feb-17	Mar-17	Apr-17	May-17	Jun-17	Jul-17	Aug-17	Sep-17	Oct-17	Nov-17	Dec-17	Jan-18	Feb-18	Mar-18	Apr-18	May-18	Jun-18
Month of Inventory : SFH	3.1	3.1	2.9	2.9	2.7	2.5	2.4	2.3	2.7	2.5	2.7	2.7	2.5	2.5	2.4	2.3	2.2	2.1	1.9	2.0	2.1	2.3	2.5	2.7
Months of Inventory: Condos	3.0	3.0	3.0	2.8	2.7	2.6	2.4	2.4	2.7	2.7	2.8	2.8	2.7	2.8	2.6	2.6	2.5	2.3	2.4	2.5	2.6	2.8	2.7	3.0

SOURCE: Honolulu Board of REALTORS®, compiled from MLS data.



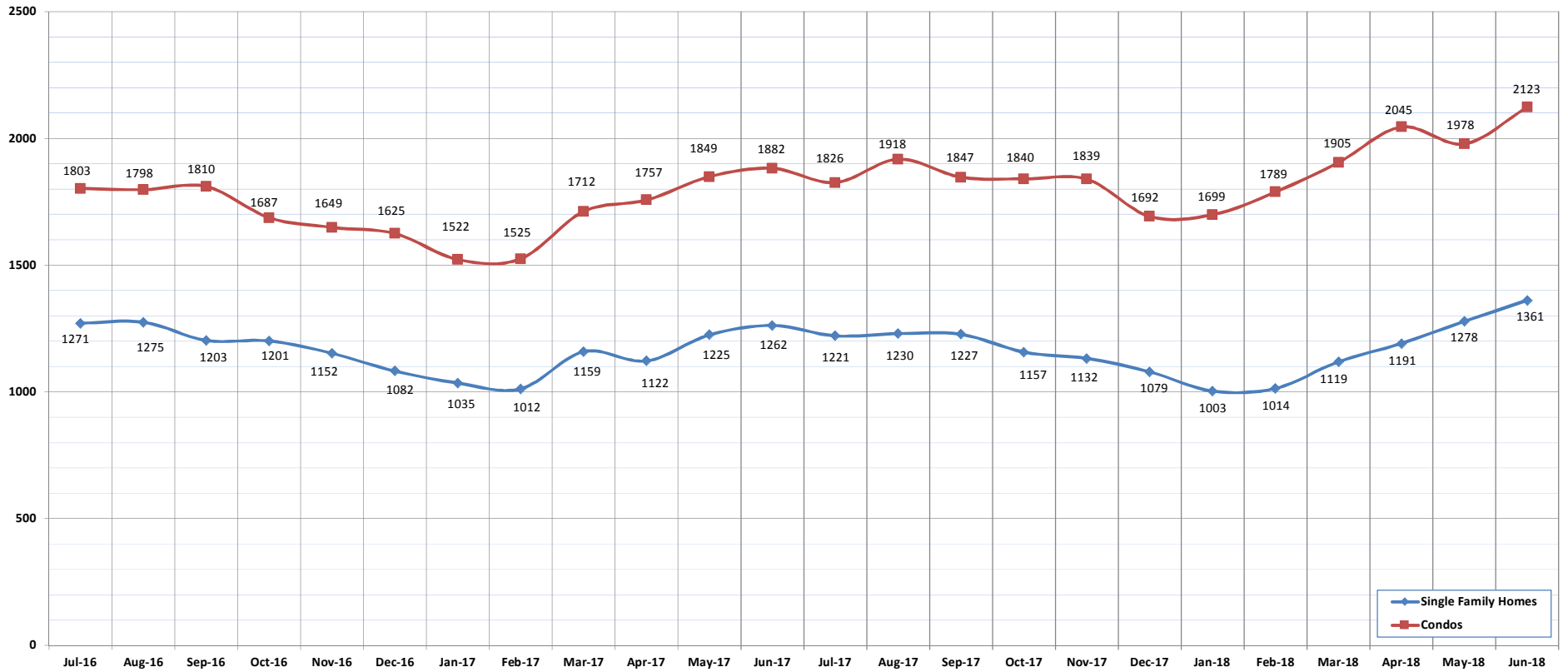


# Active Listings

June-18

OAHU, HAWAII

(The number of properties available for purchase during a given month.)



	Jul-16	Aug-16	Sep-16	Oct-16	Nov-16	Dec-16	Jan-17	Feb-17	Mar-17	Apr-17	May-17	Jun-17	Jul-17	Aug-17	Sep-17	Oct-17	Nov-17	Dec-17	Jan-18	Feb-18	Mar-18	Apr-18	May-18	Jun-18
Active Listings: Single Family Homes	1271	1275	1203	1201	1152	1082	1035	1012	1159	1122	1225	1262	1221	1230	1227	1157	1132	1079	1003	1014	1119	1191	1278	1361
Active Listings: Condos	1803	1798	1810	1687	1649	1625	1522	1525	1712	1757	1849	1882	1826	1918	1847	1840	1839	1692	1699	1789	1905	2045	1978	2123
Active Listings: Total	3074	3073	3013	2888	2801	2707	2557	2537	2871	2879	3074	3144	3047	3148	3074	2997	2971	2771	2702	2803	3024	3236	3256	3484

SOURCE: Honolulu Board of REALTORS®, compiled from MLS data.

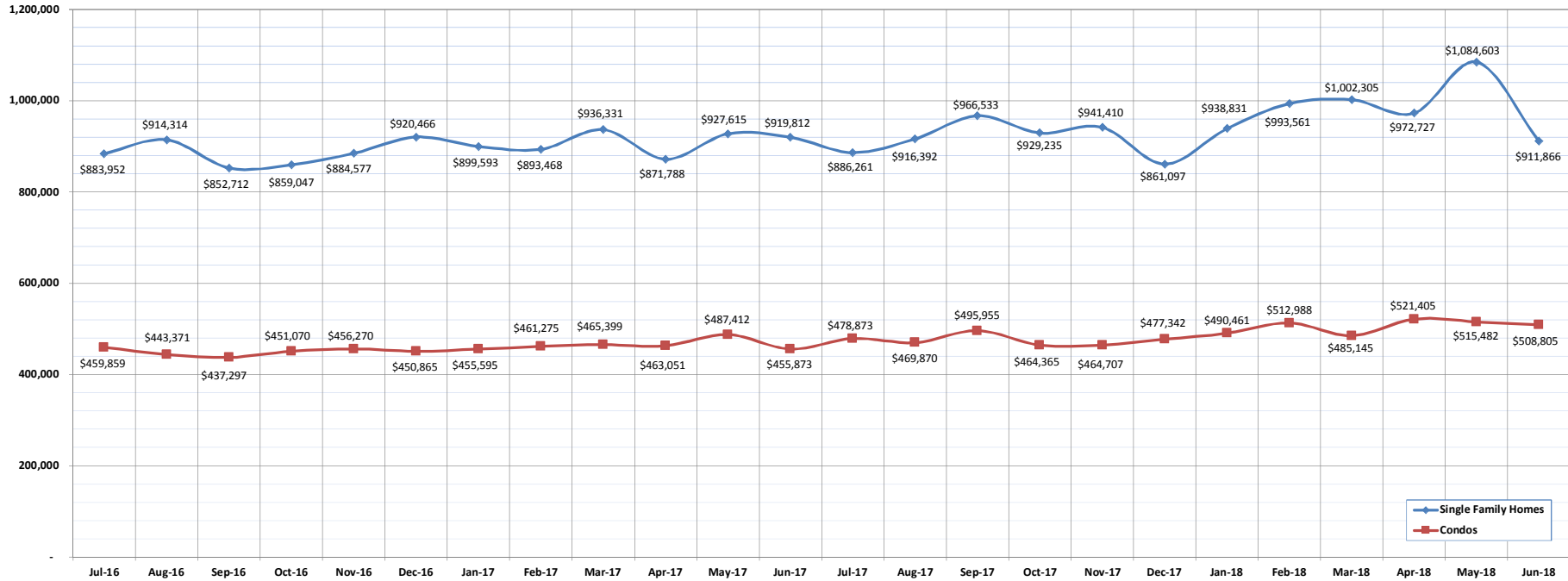


# Average Sales Price

June-18

OAHU, HAWAII

(The average sales price for all closed sales in a given month.)



	Jul-16	Aug-16	Sep-16	Oct-16	Nov-16	Dec-16	Jan-17	Feb-17	Mar-17	Apr-17	May-17	Jun-17	Jul-17	Aug-17	Sep-17	Oct-17	Nov-17	Dec-17	Jan-18	Feb-18	Mar-18	Apr-18	May-18	Jun-18
<b>Average Sales Price: SFH</b>	883,952	914,314	852,712	859,047	884,577	920,466	899,593	893,468	936,331	871,788	927,615	919,812	886,261	916,392	966,533	929,235	941,410	861,097	938,831	993,561	1,002,305	972,727	1,084,603	911,866
<b>Average Sales Price: Condos</b>	459,859	443,371	437,297	451,070	456,270	450,865	455,595	461,275	465,399	463,051	487,412	455,873	478,873	469,870	495,955	464,365	464,707	477,342	490,461	512,988	485,145	521,405	515,482	508,805

SOURCE: Honolulu Board of REALTORS®, compiled from MLS data.

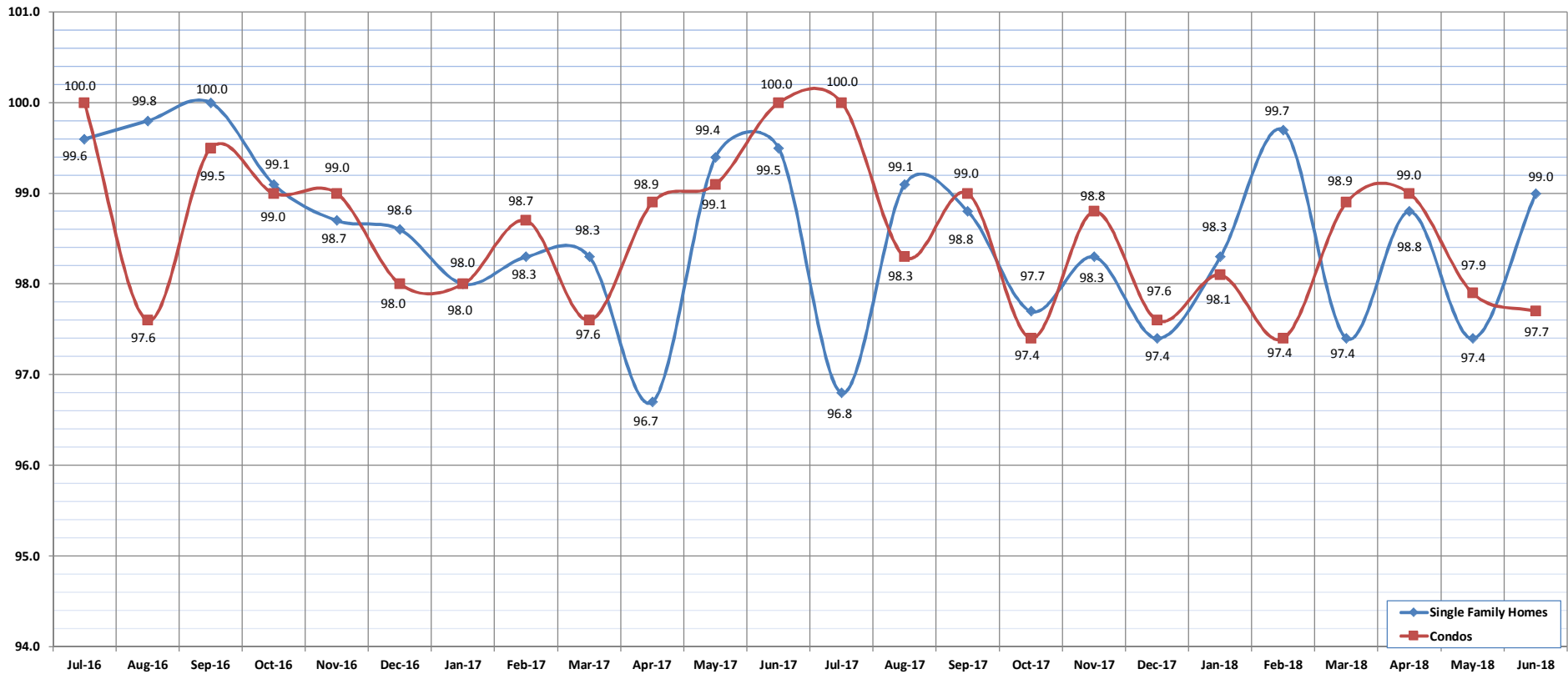


# Percent of Original List Price Received

June-18

OAHU, HAWAII

(The percentage found when dividing a property's sales price by the original list price.)



	Jul-16	Aug-16	Sep-16	Oct-16	Nov-16	Dec-16	Jan-17	Feb-17	Mar-17	Apr-17	May-17	Jun-17	Jul-17	Aug-17	Sep-17	Oct-17	Nov-17	Dec-17	Jan-18	Feb-18	Mar-18	Apr-18	May-18	Jun-18
Percent of Original List Price: SFH	99.6	99.8	100.0	99.1	98.7	98.6	98.0	98.3	98.3	96.7	99.4	99.5	96.8	99.1	98.8	97.7	98.3	97.4	98.3	99.7	97.4	98.8	97.4	99.0
Percent of Original List Price: Condos	100.0	97.6	99.5	99.0	99.0	98.0	98.0	98.7	97.6	98.9	99.1	100.0	100.0	98.3	99.0	97.4	98.8	97.6	98.1	97.4	98.9	99.0	97.9	97.7

SOURCE: Honolulu Board of REALTORS®, compiled from MLS data.

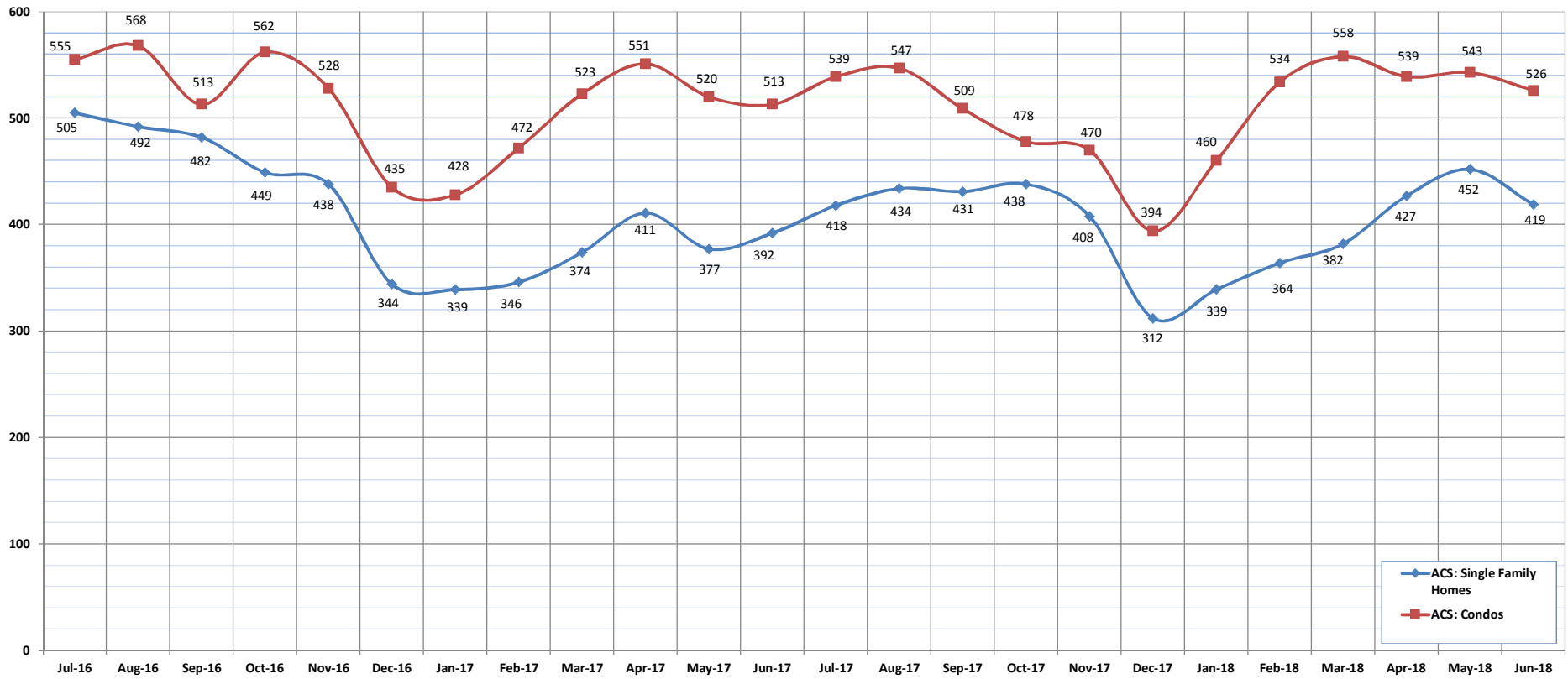


# Active Continue to Show

June-18

OAHU, HAWAII

(A count of the properties that are in ACS during the current month.)



	Jul-16	Aug-16	Sep-16	Oct-16	Nov-16	Dec-16	Jan-17	Feb-17	Mar-17	Apr-17	May-17	Jun-17	Jul-17	Aug-17	Sep-17	Oct-17	Nov-17	Dec-17	Jan-18	Feb-18	Mar-18	Apr-18	May-18	Jun-18	
ACS: Single Family Homes	505	492	482	449	438	344	339	346	374	411	377	392	418	434	431	438	408	408	312	339	364	382	427	452	419
ACS: Condos	555	568	513	562	528	435	428	472	523	551	520	513	539	547	509	478	470	470	394	460	534	558	539	543	526

SOURCE: Honolulu Board of REALTORS®, compiled from MLS data.



# Housing Supply Overview

June 2018

Single Family Homes	Pending Sales			Days on Market			Percentage of Original Price Received			Inventory of Homes for Sale			Months Supply of Inventory		
	Jun-18	Jun-17	%	Jun-18	Jun-17	%	Jun-18	Jun-17	%	Jun-18	Jun-17	%	Jun-18	Jun-17	%
\$350,000 and Below	68	124	-45.2%	34	30	13.3%	96.6%	95.1%	1.6%	18	25	-28.0%	2.3	2.5	-8.0%
\$350,001 - \$475,000	199	211	-5.7%	26	24	8.3%	98.4%	98.1%	0.3%	38	47	-19.1%	2.2	2.4	-8.3%
\$475,001 - \$550,000	248	296	-16.2%	16	15	6.7%	98.1%	99.2%	-1.1%	52	49	6.1%	2.3	1.8	27.8%
\$550,001 - \$650,000	605	699	-13.4%	14	13	7.7%	99.8%	99.9%	-0.1%	136	127	7.1%	2.5	2.2	13.6%
\$650,001 - \$800,000	1155	1065	8.5%	16	16	0.0%	98.5%	98.9%	-0.4%	266	244	9.0%	2.8	2.9	-3.4%
\$800,001 - \$1.1M	1011	899	12.5%	16	17	-5.9%	99.3%	98.5%	0.8%	326	264	23.5%	4.0	3.7	8.1%
\$1.1M - \$1.9M	609	552	10.3%	30	29	3.4%	96.4%	96.7%	-0.3%	295	272	8.5%	6.1	6.5	-6.2%
\$1.9M and Above	192	173	11.0%	53	72	-26.4%	92.3%	91.0%	1.4%	230	234	-1.7%	14.6	16.2	-9.9%
<b>All Single Family Homes</b>	<b>4087</b>	<b>4019</b>	<b>1.7%</b>	<b>17</b>	<b>17</b>	<b>0.0%</b>	<b>98.2%</b>	<b>98.9%</b>	<b>-0.7%</b>	<b>1361</b>	<b>1262</b>	<b>7.8%</b>	<b>4.0</b>	<b>3.9</b>	<b>2.6%</b>

Condos	Pending Sales			Days on Market			Percentage of Original Price Received			Inventory of Homes for Sale			Months Supply of Inventory		
	Jun-18	Jun-17	%	Jun-18	Jun-17	%	Jun-18	Jun-17	%	Jun-18	Jun-17	%	Jun-18	Jun-17	%
\$150,000 and below	301	360	-16.4%	43	44	-2.3%	91.9%	91.1%	0.9%	140	145	-3.4%	5.2	4.5	15.6%
\$150,001 - \$200,000	290	346	-16.2%	30	24	25.0%	96.9%	96.3%	0.6%	105	96	9.4%	4.0	3.4	17.6%
\$200,001 - \$250,000	419	412	1.7%	23	23	0.0%	96.1%	97.1%	-1.0%	153	129	18.6%	4.3	3.8	13.2%
\$250,001 - \$300,000	459	516	-11.0%	19	20	-5.0%	98.0%	98.0%	0.0%	141	134	5.2%	3.4	2.9	17.2%
\$300,001 - \$375,000	1046	1115	-6.2%	15	13	15.4%	98.7%	99.5%	-0.8%	257	233	10.3%	2.8	2.6	7.7%
\$375,001 - \$475,000	1226	1186	3.4%	14	13	7.7%	98.4%	98.8%	-0.4%	334	267	25.1%	3.3	2.8	17.9%
\$475,001 - \$700,000	1645	1412	16.5%	16	17	-5.9%	98.8%	98.7%	0.1%	478	420	13.8%	3.7	4.0	-7.5%
\$700,001 and above	760	622	22.2%	40	48	-16.7%	96.5%	95.7%	0.8%	515	458	12.4%	8.8	9.5	-7.4%
<b>All Condos</b>	<b>6146</b>	<b>5969</b>	<b>3.0%</b>	<b>19</b>	<b>18</b>	<b>5.6%</b>	<b>98.3%</b>	<b>98.8%</b>	<b>-0.5%</b>	<b>2123</b>	<b>1882</b>	<b>12.8%</b>	<b>4.2</b>	<b>3.9</b>	<b>7.7%</b>

SOURCE: Honolulu Board of REALTORS®, compiled from MLS data.

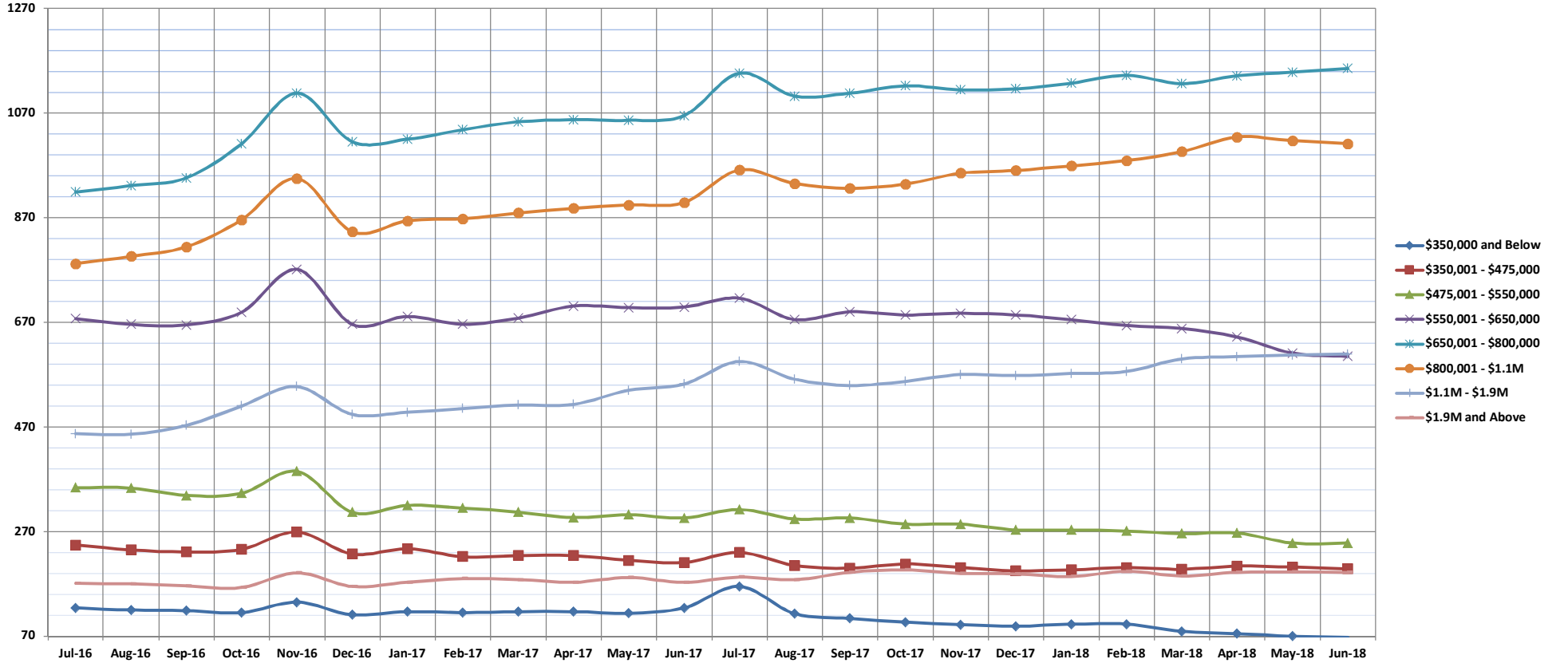


# Pending Sales

Jun-18

Single Family Homes: Monthly, by Price Range

(A count of properties that have offers accepted on them in a given month. Based on a 12 month rolling total.)



	Jul-16	Aug-16	Sep-16	Oct-16	Nov-16	Dec-16	Jan-17	Feb-17	Mar-17	Apr-17	May-17	Jun-17	Jul-17	Aug-17	Sep-17	Oct-17	Nov-17	Dec-17	Jan-18	Feb-18	Mar-18	Apr-18	May-18	Jun-18
\$350,000 and Below	124	120	119	115	135	111	117	115	117	117	114	124	165	113	104	97	92	89	93	93	79	75	70	68
\$350,001 - \$475,000	244	235	231	236	269	227	237	222	224	224	215	211	230	205	200	208	201	195	197	201	198	204	202	199
\$475,001 - \$550,000	354	353	339	343	385	307	320	315	307	297	302	296	312	294	296	284	284	273	273	271	266	267	248	248
\$550,001 - \$650,000	677	666	665	689	771	666	681	666	678	701	698	699	716	675	690	684	687	684	675	664	658	642	611	605
\$650,001 - \$800,000	919	931	946	1011	1108	1015	1020	1038	1053	1057	1056	1065	1146	1102	1108	1122	1114	1116	1127	1142	1126	1141	1148	1155
\$800,001 - \$1.1M	782	796	814	866	945	843	864	868	879	888	894	899	961	935	926	934	955	960	969	979	996	1024	1017	1011
\$1.1M - \$1.9M	457	456	473	510	547	494	498	505	512	513	540	552	595	561	549	557	570	568	572	576	600	604	607	609
\$1.9M and Above	171	170	166	163	191	165	173	180	178	173	182	173	183	178	192	197	190	189	184	194	185	192	193	192
All Single Family Homes	3728	3727	3753	3933	4351	3828	3910	3909	3948	3970	4001	4019	4308	4063	4065	4083	4093	4074	4090	4120	4108	4149	4096	4087

SOURCE: Honolulu Board of REALTORS®, compiled from MLS data.

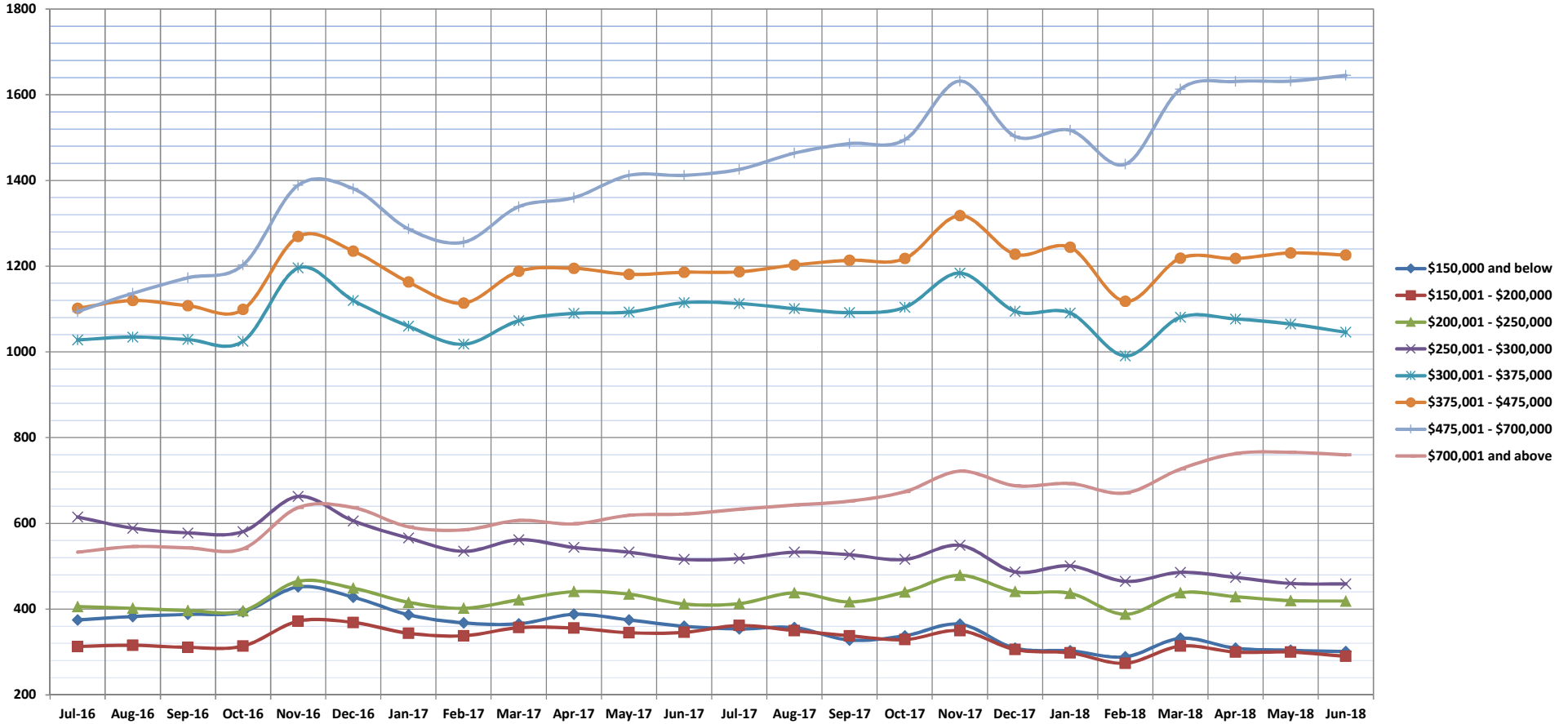


# Pending Sales

Jun-18

Condos: Monthly, by Price Range

(A count of properties that have offers accepted on them in a given month. Based on a 12 month rolling total.)



	Jul-16	Aug-16	Sep-16	Oct-16	Nov-16	Dec-16	Jan-17	Feb-17	Mar-17	Apr-17	May-17	Jun-17	Jul-17	Aug-17	Sep-17	Oct-17	Nov-17	Dec-17	Jan-18	Feb-18	Mar-18	Apr-18	May-18	Jun-18
<b>\$150,000 and below</b>	375	383	388	394	452	428	387	368	366	388	375	360	354	357	328	338	365	309	303	289	332	309	304	301
<b>\$150,001 - \$200,000</b>	313	316	311	314	372	369	344	338	357	356	345	346	362	350	338	329	350	306	298	274	314	300	300	290
<b>\$200,001 - \$250,000</b>	406	402	397	396	465	449	416	402	422	441	435	412	413	438	417	440	479	441	437	388	438	429	420	419
<b>\$250,001 - \$300,000</b>	615	589	578	581	663	606	566	535	562	544	533	516	518	533	527	516	549	487	501	465	486	474	460	459
<b>\$300,001 - \$375,000</b>	1028	1035	1029	1025	1196	1120	1060	1018	1073	1090	1093	1115	1113	1101	1092	1104	1184	1095	1091	991	1081	1077	1065	1046
<b>\$375,001 - \$475,000</b>	1102	1120	1108	1099	1269	1235	1163	1114	1188	1195	1181	1186	1187	1203	1214	1218	1318	1228	1244	1118	1219	1218	1231	1226
<b>\$475,001 - \$700,000</b>	1094	1137	1173	1203	1389	1381	1287	1256	1339	1360	1412	1412	1426	1464	1486	1495	1632	1503	1517	1438	1613	1631	1632	1645
<b>\$700,001 and above</b>	533	546	543	541	637	637	592	585	607	599	619	622	633	643	652	674	722	688	693	671	727	763	766	760
<b>All Condos</b>	5466	5528	5527	5553	6443	6225	5815	5616	5914	5973	5993	5969	6006	6089	6054	6114	6599	6057	6084	5634	6210	6201	6178	6146

SOURCE: Honolulu Board of REALTORS®, compiled from MLS data.

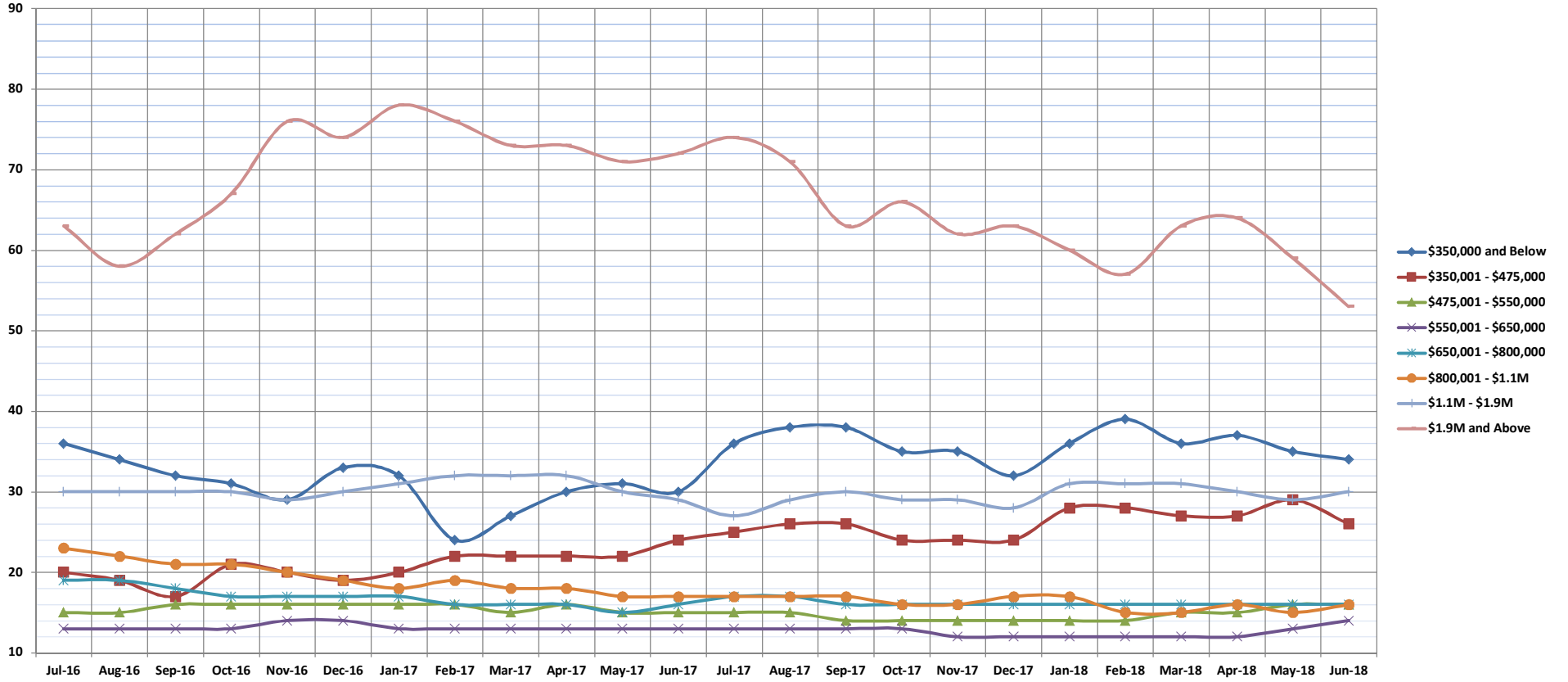


# Days on Market Until Sale

Jun-18

Single Family Homes: Monthly, by Price Range

(The median number of days between when a property is first listed and when an offer is accepted. Based on a 12 month rolling median.)



	Jul-16	Aug-16	Sep-16	Oct-16	Nov-16	Dec-16	Jan-17	Feb-17	Mar-17	Apr-17	May-17	Jun-17	Jul-17	Aug-17	Sep-17	Oct-17	Nov-17	Dec-17	Jan-18	Feb-18	Mar-18	Apr-18	May-18	Jun-18	
<b>\$350,000 and Below</b>	36	34	32	31	29	33	32	24	27	30	31	30	36	38	38	35	35	32	36	39	36	37	35	34	
<b>\$350,001 - \$475,000</b>	20	19	17	21	20	19	20	22	22	22	22	24	25	26	26	24	24	24	24	28	27	27	29	26	
<b>\$475,001 - \$550,000</b>	15	15	16	16	16	16	16	16	15	16	15	15	15	15	14	14	14	14	14	14	14	15	16	16	
<b>\$550,001 - \$650,000</b>	13	13	13	13	14	14	13	13	13	13	13	13	13	13	13	13	12	12	12	12	12	12	13	14	
<b>\$650,001 - \$800,000</b>	19	19	18	17	17	17	17	16	16	16	15	16	17	17	16	16	16	16	16	16	16	16	16	16	
<b>\$800,001 - \$1.1M</b>	23	22	21	21	20	19	18	19	18	18	17	17	17	17	17	16	16	17	17	15	15	16	15	16	
<b>\$1.1M - \$1.9M</b>	30	30	30	30	29	30	31	32	32	32	32	30	29	27	29	30	29	29	28	31	31	31	30	29	30
<b>\$1.9M and Above</b>	63	58	62	67	76	74	78	76	73	73	71	72	74	71	63	66	62	63	60	57	63	64	59	53	
<b>All Single Family Homes</b>	19	19	18	18	18	18	18	18	18	18	18	17	18	18	18	17	17	17	17	17	17	17	17	17	

SOURCE: Honolulu Board of REALTORS®, compiled from MLS data.



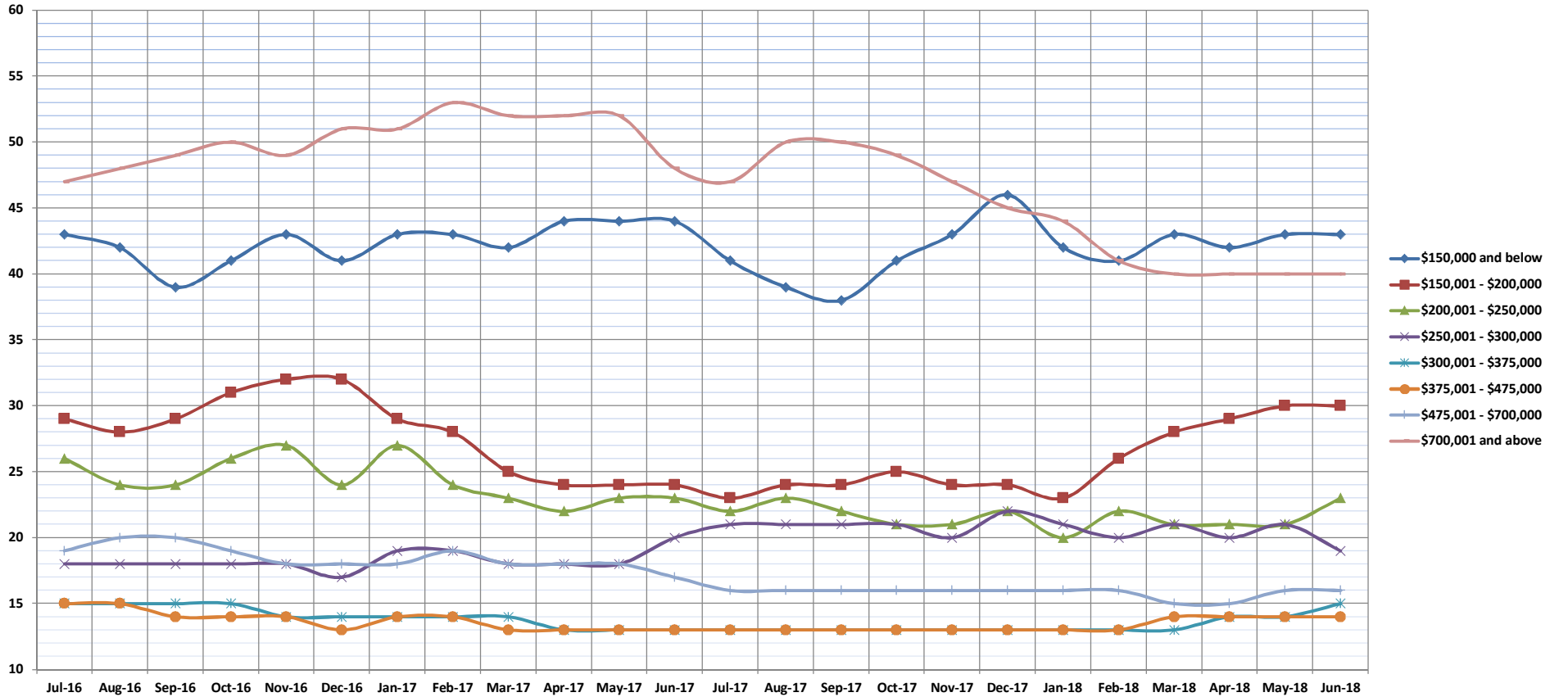


# Days on Market Until Sale

Jun-18

Condos: Monthly, by Price Range

(The median number of days between when a property is first listed and when an offer is accepted. Based on a 12 month rolling median.)



	Jul-16	Aug-16	Sep-16	Oct-16	Nov-16	Dec-16	Jan-17	Feb-17	Mar-17	Apr-17	May-17	Jun-17	Jul-17	Aug-17	Sep-17	Oct-17	Nov-17	Dec-17	Jan-18	Feb-18	Mar-18	Apr-18	May-18	Jun-18	
\$150,000 and below	43	42	39	41	43	41	43	43	42	44	44	44	41	39	38	41	43	46	42	41	43	42	43	43	
\$150,001 - \$200,000	29	28	29	31	32	32	29	28	25	24	24	24	23	24	24	25	24	24	23	26	28	29	30	30	
\$200,001 - \$250,000	26	24	24	26	27	24	27	24	23	22	23	23	22	23	22	21	21	22	20	22	21	21	21	23	
\$250,001 - \$300,000	18	18	18	18	18	17	19	19	18	18	18	20	21	21	21	21	20	22	21	20	21	20	21	19	
\$300,001 - \$375,000	15	15	15	15	14	14	14	14	14	13	13	13	13	13	13	13	13	13	13	13	13	14	14	15	
\$375,001 - \$475,000	15	15	14	14	14	13	14	14	13	13	13	13	13	13	13	13	13	13	13	13	14	14	14	14	
\$475,001 - \$700,000	19	20	20	19	18	18	18	19	18	18	18	17	16	16	16	16	16	16	16	16	16	15	15	16	16
\$700,001 and above	47	48	49	50	49	51	51	53	52	52	52	48	47	50	50	49	47	45	44	41	40	40	40	40	
All Condos	20	20	20	20	20	19	20	20	19	19	19	18	18	18	18	18	18	18	17	17	18	18	18	19	

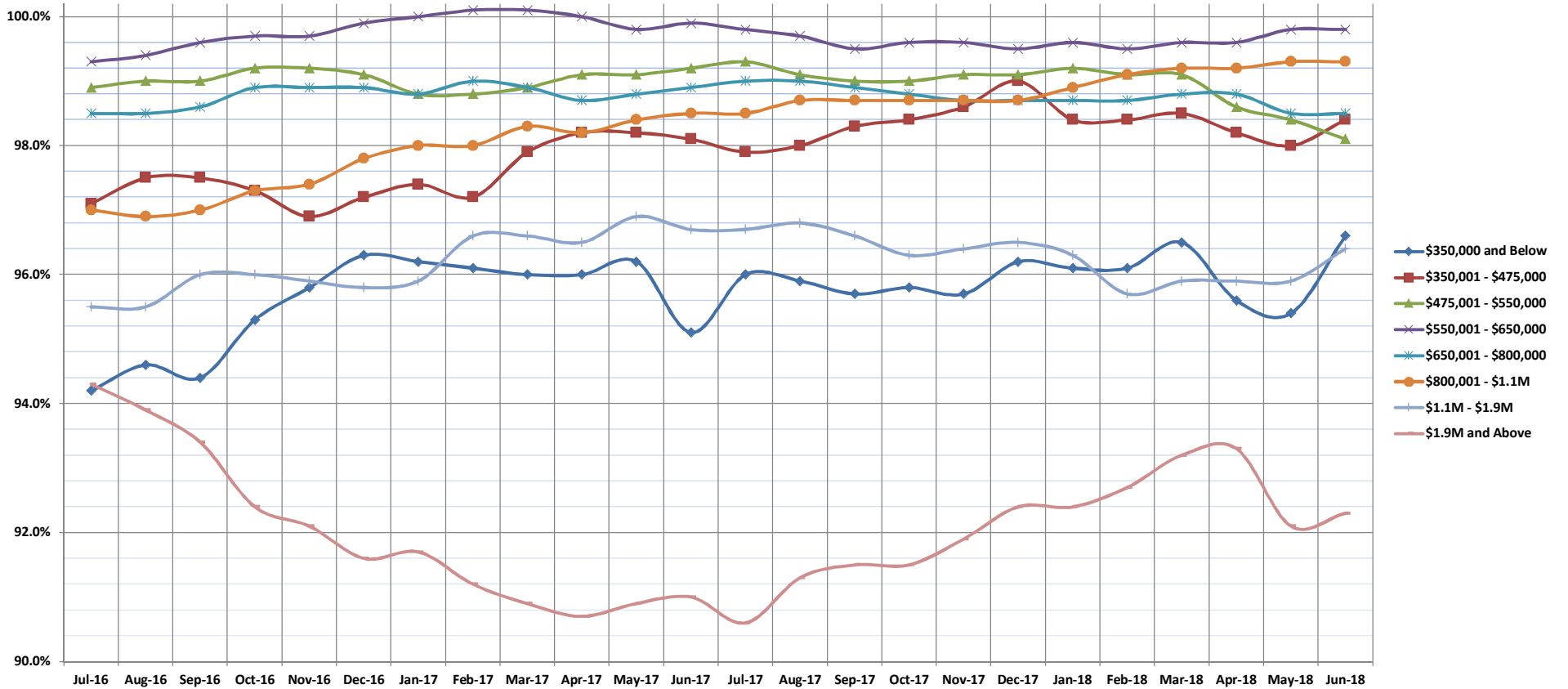
SOURCE: Honolulu Board of REALTORS®, compiled from MLS data.

# Percentage of Original Price Received

Jun-18

Single Family Homes: Monthly, by Price Range

(The average percentage found when dividing a property's sales price by the original list price. Based on a rolling 12 month average.)



	Jul-16	Aug-16	Sep-16	Oct-16	Nov-16	Dec-16	Jan-17	Feb-17	Mar-17	Apr-17	May-17	Jun-17	Jul-17	Aug-17	Sep-17	Oct-17	Nov-17	Dec-17	Jan-18	Feb-18	Mar-18	Apr-18	May-18	Jun-18	
<b>\$350,000 and Below</b>	94.2%	94.6%	94.4%	95.3%	95.8%	96.3%	96.2%	96.1%	96.0%	96.0%	96.2%	95.1%	96.0%	95.9%	95.7%	95.8%	95.7%	96.2%	96.1%	96.1%	96.5%	95.6%	95.4%	96.6%	
<b>\$350,001 - \$475,000</b>	97.1%	97.5%	97.5%	97.3%	96.9%	97.2%	97.4%	97.2%	97.9%	98.2%	98.2%	98.1%	97.9%	98.0%	98.3%	98.4%	98.6%	99.0%	98.4%	98.4%	98.4%	98.5%	98.2%	98.0%	98.4%
<b>\$475,001 - \$550,000</b>	98.9%	99.0%	99.0%	99.2%	99.2%	99.1%	98.8%	98.8%	98.9%	99.1%	99.1%	99.2%	99.3%	99.1%	99.0%	99.0%	99.1%	99.1%	99.2%	99.1%	99.1%	99.1%	98.6%	98.4%	98.1%
<b>\$550,001 - \$650,000</b>	99.3%	99.4%	99.6%	99.7%	99.7%	99.9%	100.0%	100.1%	100.1%	100.0%	99.8%	99.9%	99.8%	99.7%	99.5%	99.6%	99.6%	99.5%	99.6%	99.5%	99.6%	99.6%	99.8%	99.8%	99.8%
<b>\$650,001 - \$800,000</b>	98.5%	98.5%	98.6%	98.9%	98.9%	98.9%	98.8%	99.0%	98.9%	98.7%	98.8%	98.9%	99.0%	99.0%	98.9%	98.8%	98.7%	98.7%	98.7%	98.7%	98.7%	98.7%	98.8%	98.8%	98.5%
<b>\$800,001 - \$1.1M</b>	97.0%	96.9%	97.0%	97.3%	97.4%	97.8%	98.0%	98.0%	98.3%	98.2%	98.4%	98.5%	98.5%	98.7%	98.7%	98.7%	98.7%	98.7%	98.9%	99.1%	99.2%	99.2%	99.3%	99.3%	99.3%
<b>\$1.1M - \$1.9M</b>	95.5%	95.5%	96.0%	96.0%	95.9%	95.8%	95.9%	96.6%	96.6%	96.5%	96.9%	96.7%	96.7%	96.8%	96.6%	96.3%	96.4%	96.5%	96.3%	95.7%	95.9%	95.9%	95.9%	95.9%	96.4%
<b>\$1.9M and Above</b>	94.3%	93.9%	93.4%	92.4%	92.1%	91.6%	91.7%	91.2%	90.9%	90.7%	90.9%	91.0%	90.6%	91.3%	91.5%	91.5%	91.9%	92.4%	92.4%	92.7%	93.2%	93.3%	92.1%	92.3%	92.3%
<b>All Single Family Homes</b>	98.8%	98.8%	98.9%	99.1%	99.1%	99.1%	99.1%	99.0%	98.9%	98.7%	98.8%	98.9%	98.7%	98.6%	98.5%	98.4%	98.3%	98.2%	98.2%	98.3%	98.3%	98.4%	98.3%	98.2%	98.2%

SOURCE: Honolulu Board of REALTORS®, compiled from MLS data.

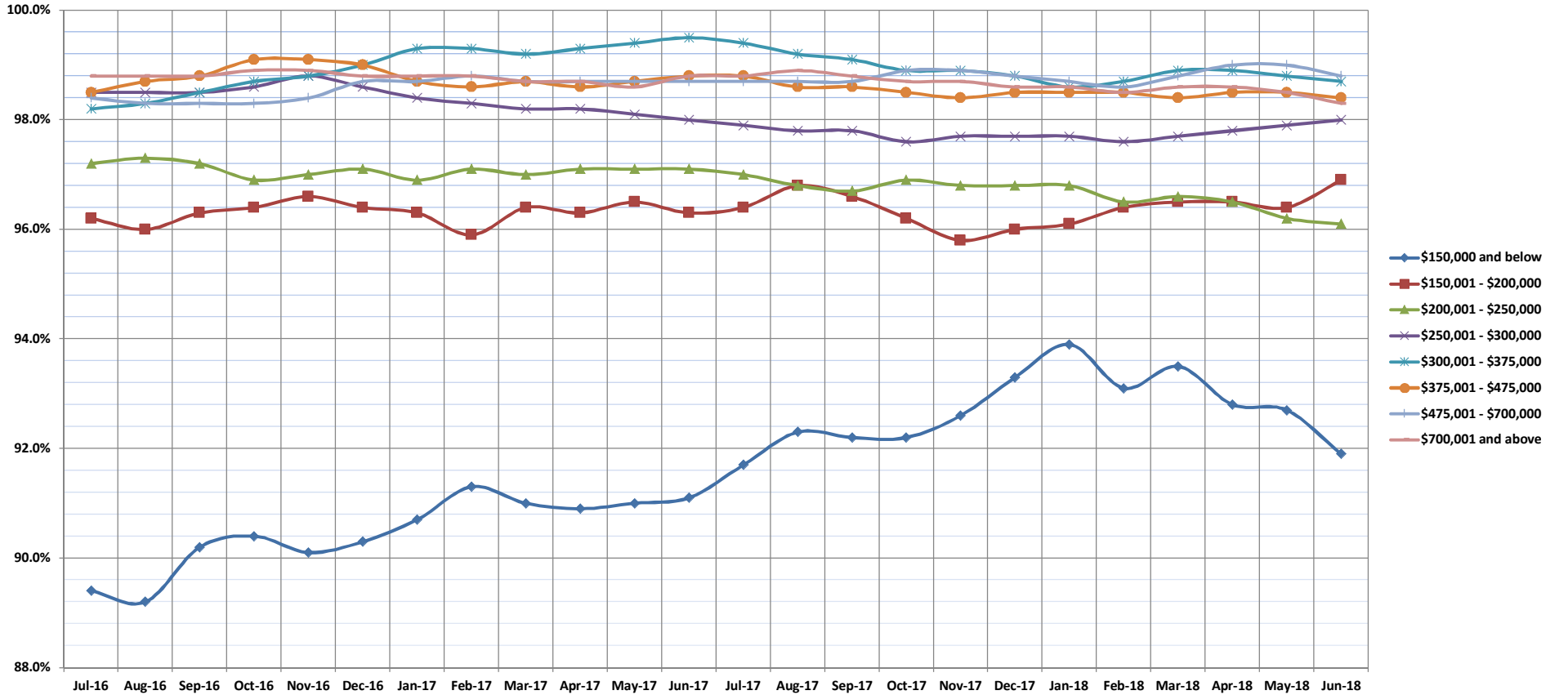


# Percentage of Original Price Received

Jun-18

Condos: Monthly, by Price Range

(The average percentage found when dividing a property's sales price by the original list price. Based on a rolling 12 month average.)



	Jul-16	Aug-16	Sep-16	Oct-16	Nov-16	Dec-16	Jan-17	Feb-17	Mar-17	Apr-17	May-17	Jun-17	Jul-17	Aug-17	Sep-17	Oct-17	Nov-17	Dec-17	Jan-18	Feb-18	Mar-18	Apr-18	May-18	Jun-18	
<b>\$150,000 and below</b>	89.4%	89.2%	90.2%	90.4%	90.1%	90.3%	90.7%	91.3%	91.0%	90.9%	91.0%	91.1%	91.7%	92.3%	92.2%	92.2%	92.6%	93.3%	93.9%	93.1%	93.5%	92.8%	92.7%	91.9%	
<b>\$150,001 - \$200,000</b>	96.2%	96.0%	96.3%	96.4%	96.6%	96.4%	96.3%	95.9%	96.4%	96.3%	96.5%	96.3%	96.4%	96.8%	96.6%	96.2%	95.8%	96.0%	96.1%	96.4%	96.5%	96.5%	96.4%	96.9%	
<b>\$200,001 - \$250,000</b>	97.2%	97.3%	97.2%	96.9%	97.0%	97.1%	96.9%	97.1%	97.0%	97.1%	97.1%	97.1%	97.0%	96.8%	96.7%	96.9%	96.8%	96.8%	96.8%	96.5%	96.6%	96.5%	96.2%	96.1%	
<b>\$250,001 - \$300,000</b>	98.5%	98.5%	98.5%	98.6%	98.8%	98.6%	98.4%	98.3%	98.2%	98.2%	98.1%	98.0%	97.9%	97.8%	97.8%	97.6%	97.7%	97.7%	97.7%	97.7%	97.6%	97.7%	97.8%	97.9%	98.0%
<b>\$300,001 - \$375,000</b>	98.2%	98.3%	98.5%	98.7%	98.8%	99.0%	99.3%	99.3%	99.2%	99.3%	99.4%	99.5%	99.4%	99.2%	99.1%	98.9%	98.9%	98.8%	98.6%	98.7%	98.9%	98.9%	98.8%	98.7%	
<b>\$375,001 - \$475,000</b>	98.5%	98.7%	98.8%	99.1%	99.1%	99.0%	98.7%	98.6%	98.7%	98.6%	98.7%	98.6%	98.7%	98.8%	98.6%	98.6%	98.5%	98.4%	98.5%	98.5%	98.4%	98.5%	98.4%	98.5%	98.4%
<b>\$475,001 - \$700,000</b>	98.4%	98.3%	98.3%	98.3%	98.4%	98.7%	98.7%	98.8%	98.7%	98.7%	98.7%	98.7%	98.7%	98.7%	98.7%	98.9%	98.9%	98.8%	98.7%	98.6%	98.8%	98.7%	98.6%	99.0%	98.8%
<b>\$700,001 and above</b>	94.9%	94.9%	94.9%	94.8%	94.5%	94.0%	94.4%	94.6%	95.5%	95.7%	95.4%	95.7%	95.8%	95.8%	95.7%	95.8%	96.1%	96.5%	96.6%	96.7%	96.8%	96.4%	96.5%	96.5%	
<b>All Condos</b>	98.8%	98.8%	98.8%	98.9%	98.9%	98.8%	98.8%	98.8%	98.8%	98.7%	98.7%	98.6%	98.8%	98.8%	98.9%	98.8%	98.7%	98.6%	98.6%	98.5%	98.6%	98.6%	98.5%	98.3%	

SOURCE: Honolulu Board of REALTORS®, compiled from MLS data.

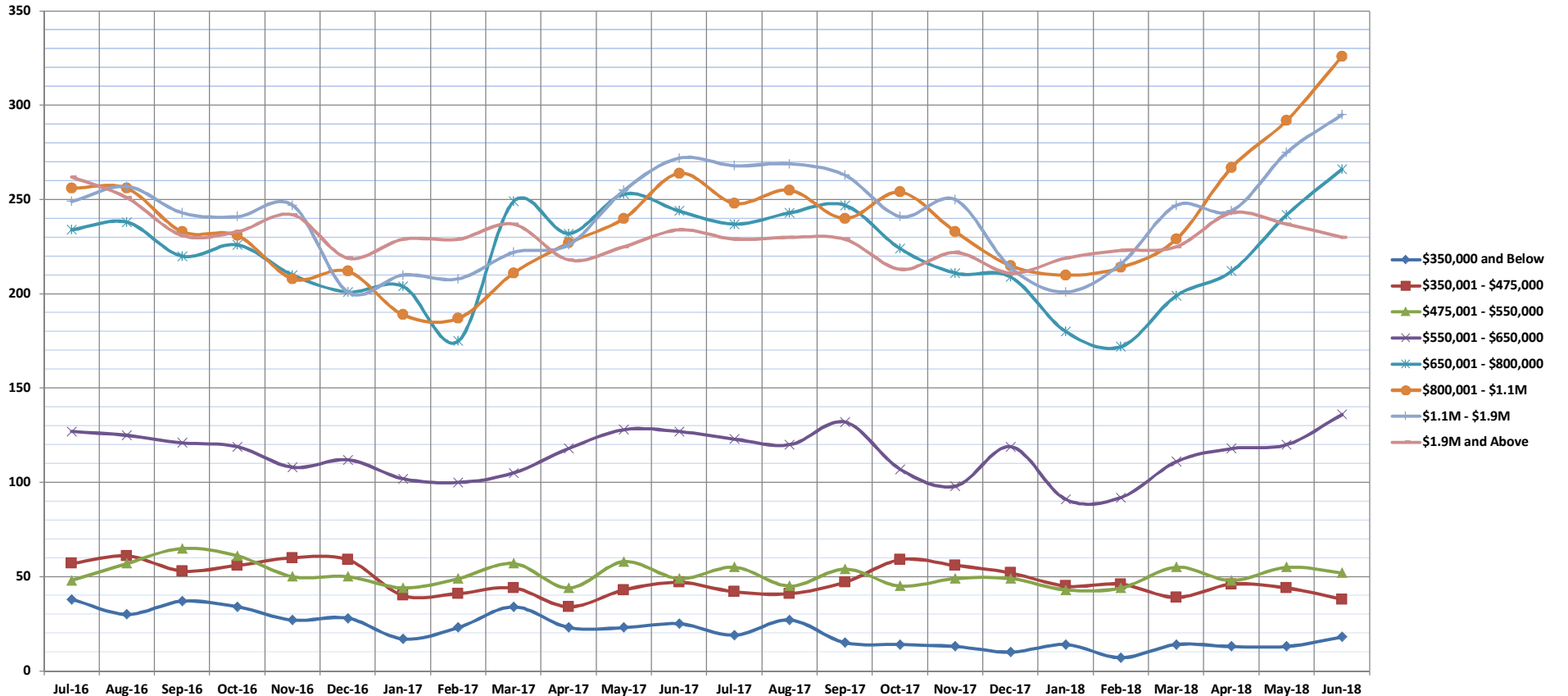


# Inventory of Homes for Sale

Jun-18

Single Family Homes: Monthly, by Price Range

(The number of properties available for sale in active status at the end of a given month.)



	Jul-16	Aug-16	Sep-16	Oct-16	Nov-16	Dec-16	Jan-17	Feb-17	Mar-17	Apr-17	May-17	Jun-17	Jul-17	Aug-17	Sep-17	Oct-17	Nov-17	Dec-17	Jan-18	Feb-18	Mar-18	Apr-18	May-18	Jun-18
<b>\$350,000 and Below</b>	38	30	37	34	27	28	17	23	34	23	23	25	19	27	15	14	13	10	14	7	14	13	13	18
<b>\$350,001 - \$475,000</b>	57	61	53	56	60	59	40	41	44	34	43	47	42	41	47	59	56	52	45	46	39	46	44	38
<b>\$475,001 - \$550,000</b>	48	57	65	61	50	50	44	49	57	44	58	49	55	45	54	45	49	49	43	44	55	48	55	52
<b>\$550,001 - \$650,000</b>	127	125	121	119	108	112	102	100	105	118	128	127	123	120	132	107	98	119	91	92	111	118	120	136
<b>\$650,001 - \$800,000</b>	234	238	220	226	210	201	204	175	249	232	253	244	237	243	247	224	211	209	180	172	199	212	242	266
<b>\$800,001 - \$1.1M</b>	256	256	233	231	208	212	189	187	211	227	240	264	248	255	240	254	233	215	210	214	229	267	292	326
<b>\$1.1M - \$1.9M</b>	249	257	243	241	247	201	210	208	222	226	255	272	268	269	263	241	250	214	201	216	247	244	275	295
<b>\$1.9M and Above</b>	262	251	231	233	242	219	229	229	237	218	225	234	229	230	229	213	222	211	219	223	225	243	237	230
<b>All Single Family Homes</b>	1271	1275	1203	1201	1152	1082	1035	1012	1159	1112	1225	1262	1221	1230	1227	1157	1132	1079	1003	1014	1119	1191	1278	1361

SOURCE: Honolulu Board of REALTORS®, compiled from MLS data.

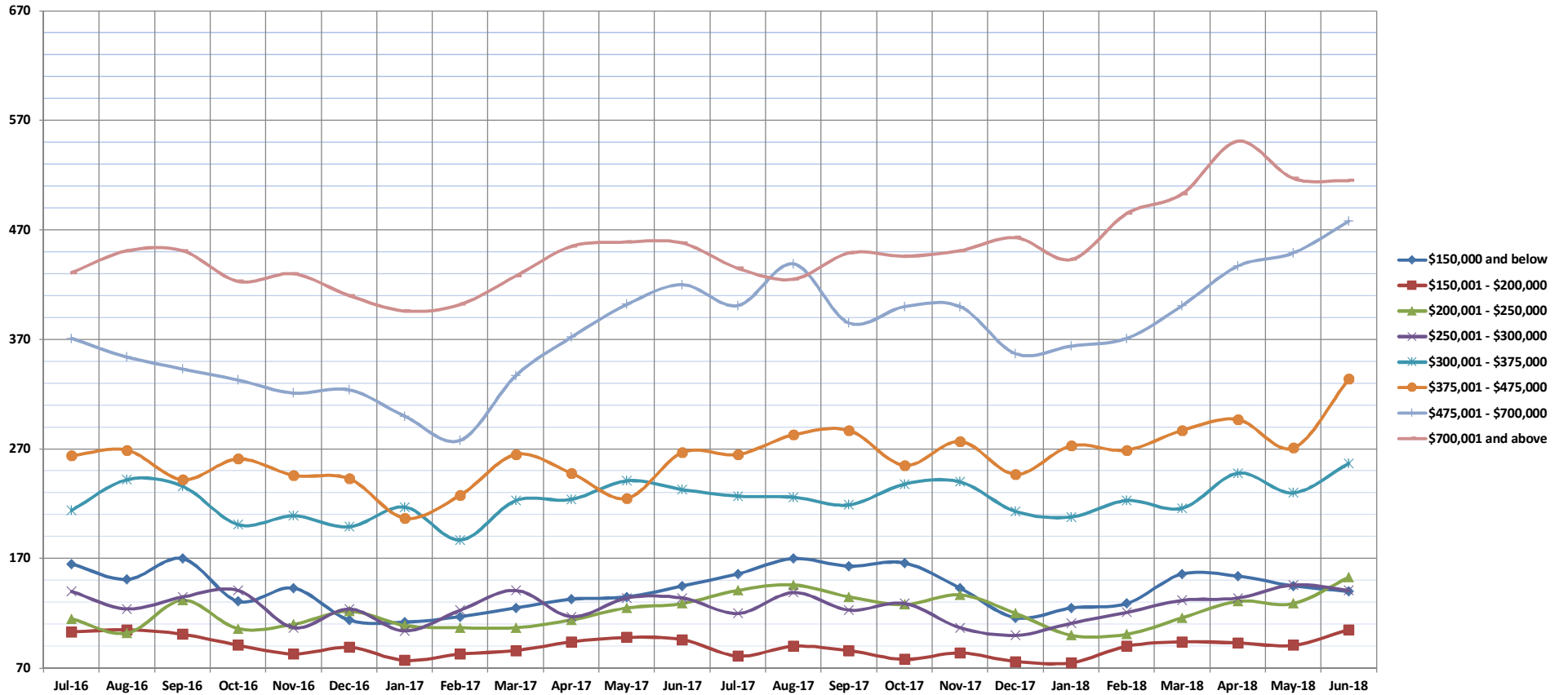


# Inventory of Homes for Sale

Jun-18

Condos: Monthly, by Price Range

(The number of properties available for sale in active status at the end of a given month.)



	Jul-16	Aug-16	Sep-16	Oct-16	Nov-16	Dec-16	Jan-17	Feb-17	Mar-17	Apr-17	May-17	Jun-17	Jul-17	Aug-17	Sep-17	Oct-17	Nov-17	Dec-17	Jan-18	Feb-18	Mar-18	Apr-18	May-18	Jun-18
\$150,000 and below	165	151	170	131	143	114	112	117	125	133	135	145	156	170	163	166	143	116	125	129	156	154	145	140
\$150,001 - \$200,000	103	105	101	91	83	89	77	83	86	94	98	96	81	90	86	78	84	76	75	90	94	93	91	105
\$200,001 - \$250,000	115	102	132	106	110	122	109	107	107	114	125	129	141	146	135	128	137	120	100	101	116	131	129	153
\$250,001 - \$300,000	140	124	135	141	107	124	104	123	141	117	134	134	120	139	123	129	107	100	111	121	132	134	146	141
\$300,001 - \$375,000	214	242	236	201	209	199	217	187	223	224	241	233	227	226	219	238	240	213	208	223	216	248	230	257
\$375,001 - \$475,000	264	269	242	261	246	243	207	228	265	248	225	267	265	283	287	255	277	247	273	269	287	297	271	334
\$475,001 - \$700,000	371	354	343	333	321	324	300	278	337	372	402	420	401	439	385	400	400	357	364	371	401	437	449	478
\$700,001 and above	431	451	451	423	430	410	396	402	428	455	459	458	435	425	449	446	451	463	443	485	503	551	517	515
All Condos	1803	1798	1810	1687	1649	1625	1522	1525	1712	1757	1849	1882	1826	1918	1847	1840	1839	1692	1699	1789	1905	2045	1978	2123

SOURCE: Honolulu Board of REALTORS®, compiled from MLS data.

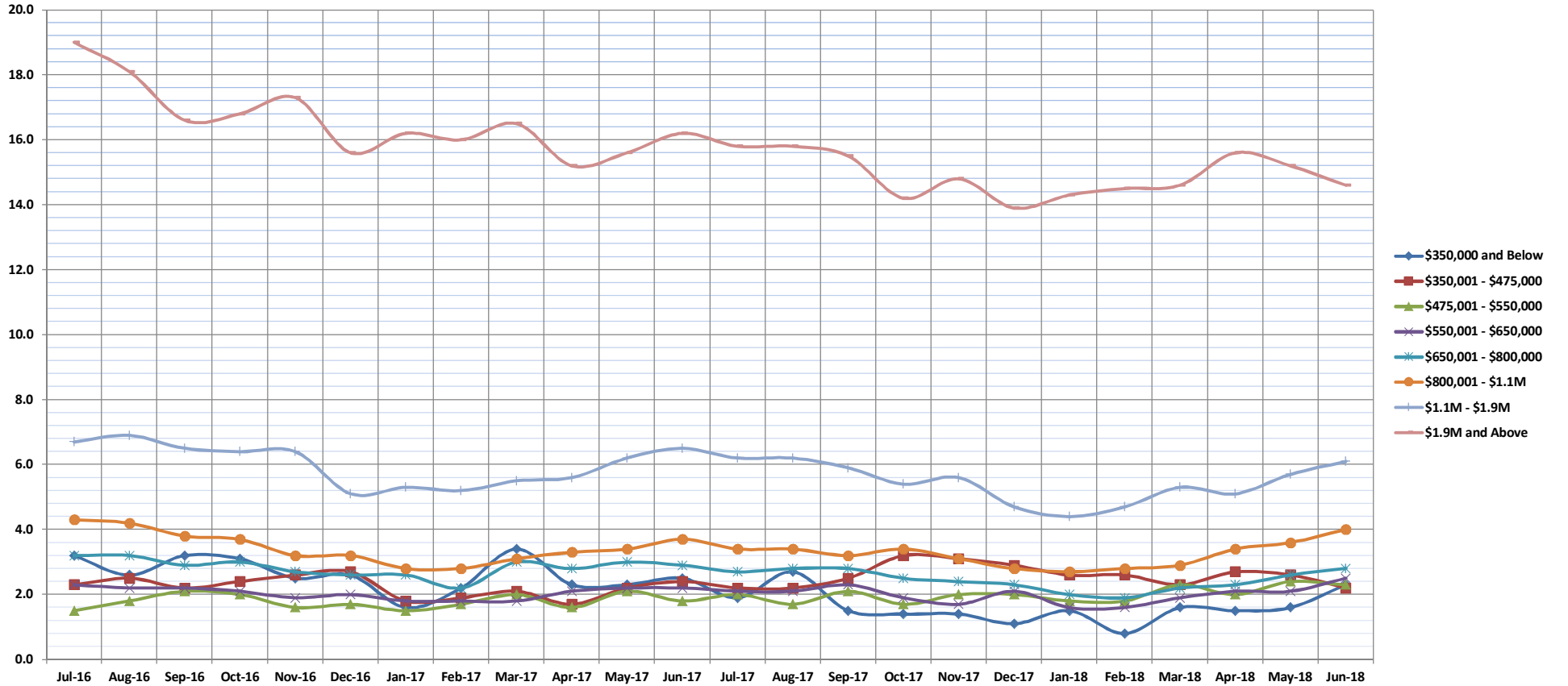


# Months Supply of Inventory

Jun-18

Single Family Homes: Monthly, by Price Range

(Compares the number of active listings available to the average monthly pending sales from the last 12 months.)



	Jul-16	Aug-16	Sep-16	Oct-16	Nov-16	Dec-16	Jan-17	Feb-17	Mar-17	Apr-17	May-17	Jun-17	Jul-17	Aug-17	Sep-17	Oct-17	Nov-17	Dec-17	Jan-18	Feb-18	Mar-18	Apr-18	May-18	Jun-18
\$350,000 and Below	3.2	2.6	3.2	3.1	2.5	2.6	1.6	2.2	3.4	2.3	2.3	2.5	1.9	2.7	1.5	1.4	1.4	1.1	1.5	0.8	1.6	1.5	1.6	2.3
\$350,001 - \$475,000	2.3	2.5	2.2	2.4	2.6	2.7	1.8	1.9	2.1	1.7	2.2	2.4	2.2	2.2	2.5	3.2	3.1	2.9	2.6	2.6	2.3	2.7	2.6	2.2
\$475,001 - \$550,000	1.5	1.8	2.1	2.0	1.6	1.7	1.5	1.7	2.0	1.6	2.1	1.8	2.0	1.7	2.1	1.7	2.0	2.0	1.8	1.8	2.3	2.0	2.4	2.3
\$550,001 - \$650,000	2.3	2.2	2.2	2.1	1.9	2.0	1.8	1.8	1.8	2.1	2.2	2.2	2.1	2.1	2.3	1.9	1.7	2.1	1.6	1.6	1.9	2.1	2.1	2.5
\$650,001 - \$800,000	3.2	3.2	2.9	3.0	2.7	2.6	2.6	2.2	3.0	2.8	3.0	2.9	2.7	2.8	2.8	2.5	2.4	2.3	2.0	1.9	2.2	2.3	2.6	2.8
\$800,001 - \$1.1M	4.3	4.2	3.8	3.7	3.2	3.2	2.8	2.8	3.1	3.3	3.4	3.7	3.4	3.4	3.2	3.4	3.1	2.8	2.7	2.8	2.9	3.4	3.6	4.0
\$1.1M - \$1.9M	6.7	6.9	6.5	6.4	6.4	5.1	5.3	5.2	5.5	5.6	6.2	6.5	6.2	6.2	5.9	5.4	5.6	4.7	4.4	4.7	5.3	5.1	5.7	6.1
\$1.9M and Above	19.0	18.1	16.6	16.8	17.3	15.6	16.2	16.0	16.5	15.2	15.6	16.2	15.8	15.8	15.5	14.2	14.8	13.9	14.3	14.5	14.6	15.6	15.2	14.6
All Single Family Homes	4.1	4.1	3.9	3.9	3.6	3.4	3.3	3.2	3.6	3.5	3.8	3.9	3.7	3.7	3.7	3.4	3.4	3.2	3.0	3.0	3.3	3.5	3.7	4.0

SOURCE: Honolulu Board of REALTORS®, compiled from MLS data.

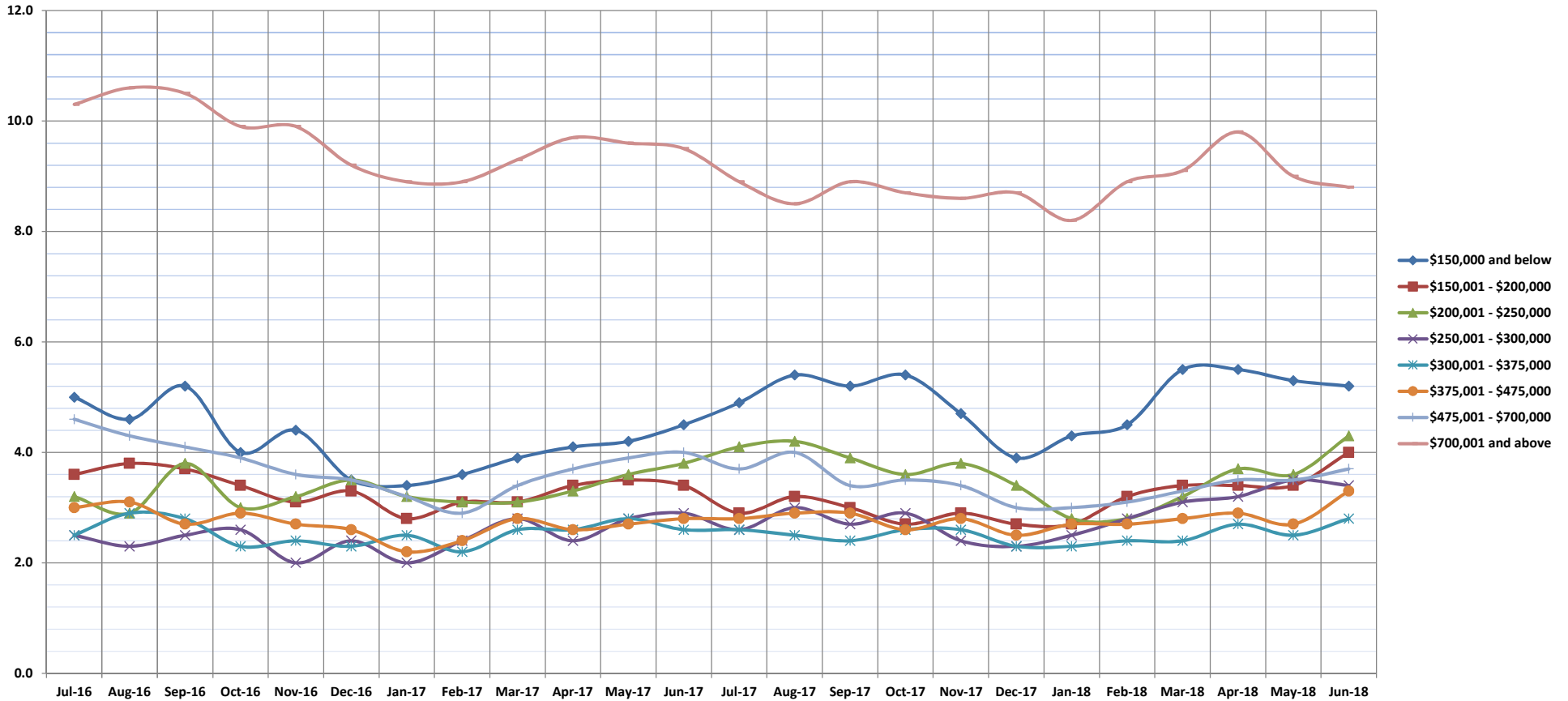


# Months Supply of Inventory

Jun-18

Condos: Monthly, by Price Range

(Compares the number of active listings available to the average monthly pending sales from the last 12 months.)



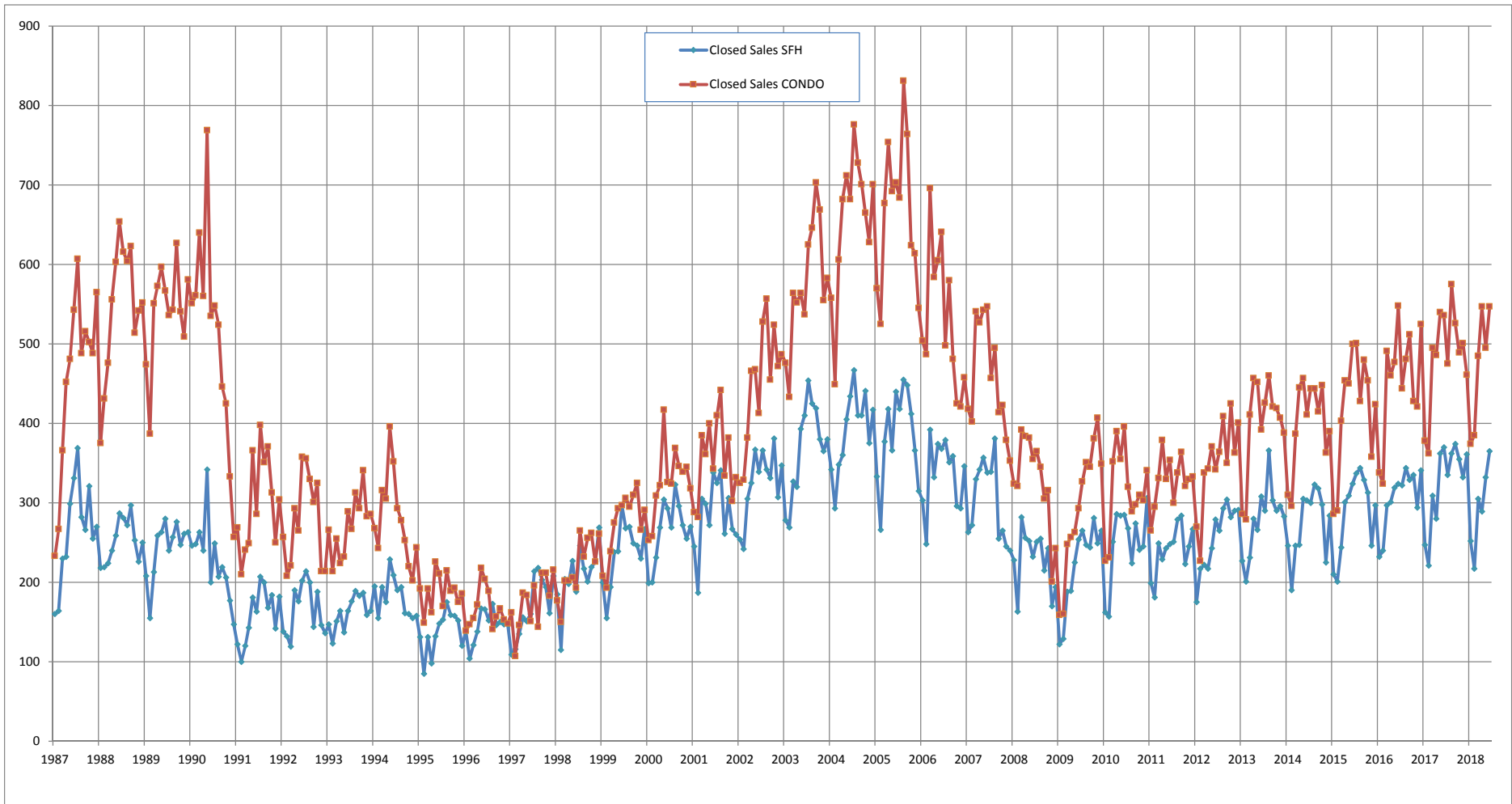
	Jul-16	Aug-16	Sep-16	Oct-16	Nov-16	Dec-16	Jan-17	Feb-17	Mar-17	Apr-17	May-17	Jun-17	Jul-17	Aug-17	Sep-17	Oct-17	Nov-17	Dec-17	Jan-18	Feb-18	Mar-18	Apr-18	May-18	Jun-18
\$150,000 and below	5.0	4.6	5.2	4.0	4.4	3.5	3.4	3.6	3.9	4.1	4.2	4.5	4.9	5.4	5.2	5.4	4.7	3.9	4.3	4.5	5.5	5.3	5.2	
\$150,001 - \$200,000	3.6	3.8	3.7	3.4	3.1	3.3	2.8	3.1	3.1	3.4	3.5	3.4	2.9	3.2	3.0	2.7	2.9	2.7	2.7	3.2	3.4	3.4	3.4	4.0
\$200,001 - \$250,000	3.2	2.9	3.8	3.0	3.2	3.5	3.2	3.1	3.1	3.3	3.6	3.8	4.1	4.2	3.9	3.6	3.8	3.4	2.8	2.8	3.2	3.7	3.6	4.3
\$250,001 - \$300,000	2.5	2.3	2.5	2.6	2.0	2.4	2.0	2.4	2.8	2.4	2.8	2.9	2.6	3.0	2.7	2.9	2.4	2.3	2.5	2.8	3.1	3.2	3.5	3.4
\$300,001 - \$375,000	2.5	2.9	2.8	2.3	2.4	2.3	2.5	2.2	2.6	2.6	2.8	2.6	2.6	2.5	2.4	2.6	2.6	2.3	2.3	2.4	2.4	2.7	2.5	2.8
\$375,001 - \$475,000	3.0	3.1	2.7	2.9	2.7	2.6	2.2	2.4	2.8	2.6	2.7	2.8	2.8	2.9	2.9	2.6	2.8	2.5	2.7	2.7	2.8	2.9	2.7	3.3
\$475,001 - \$700,000	4.6	4.3	4.1	3.9	3.6	3.5	3.2	2.9	3.4	3.7	3.9	4.0	3.7	4.0	3.4	3.5	3.4	3.0	3.0	3.1	3.3	3.5	3.5	3.7
\$700,001 and above	10.3	10.6	10.5	9.9	9.9	9.2	8.9	8.9	9.3	9.7	9.6	9.5	8.9	8.5	8.9	8.7	8.6	8.7	8.2	8.9	9.1	9.8	9.0	8.8
All Condos	4.0	4.0	4.0	3.7	3.6	3.5	3.3	3.3	3.7	3.7	3.9	3.9	3.8	3.9	3.8	3.7	3.7	3.4	3.4	3.6	3.8	4.0	3.9	4.2

SOURCE: Honolulu Board of REALTORS®, compiled from MLS data.

# Closed Sales

## Single Family Homes and Condos

OAHU, HAWAII: Jan 1987 to the Present



SOURCE: Honolulu Board of REALTORS® , compiled from MLS data.

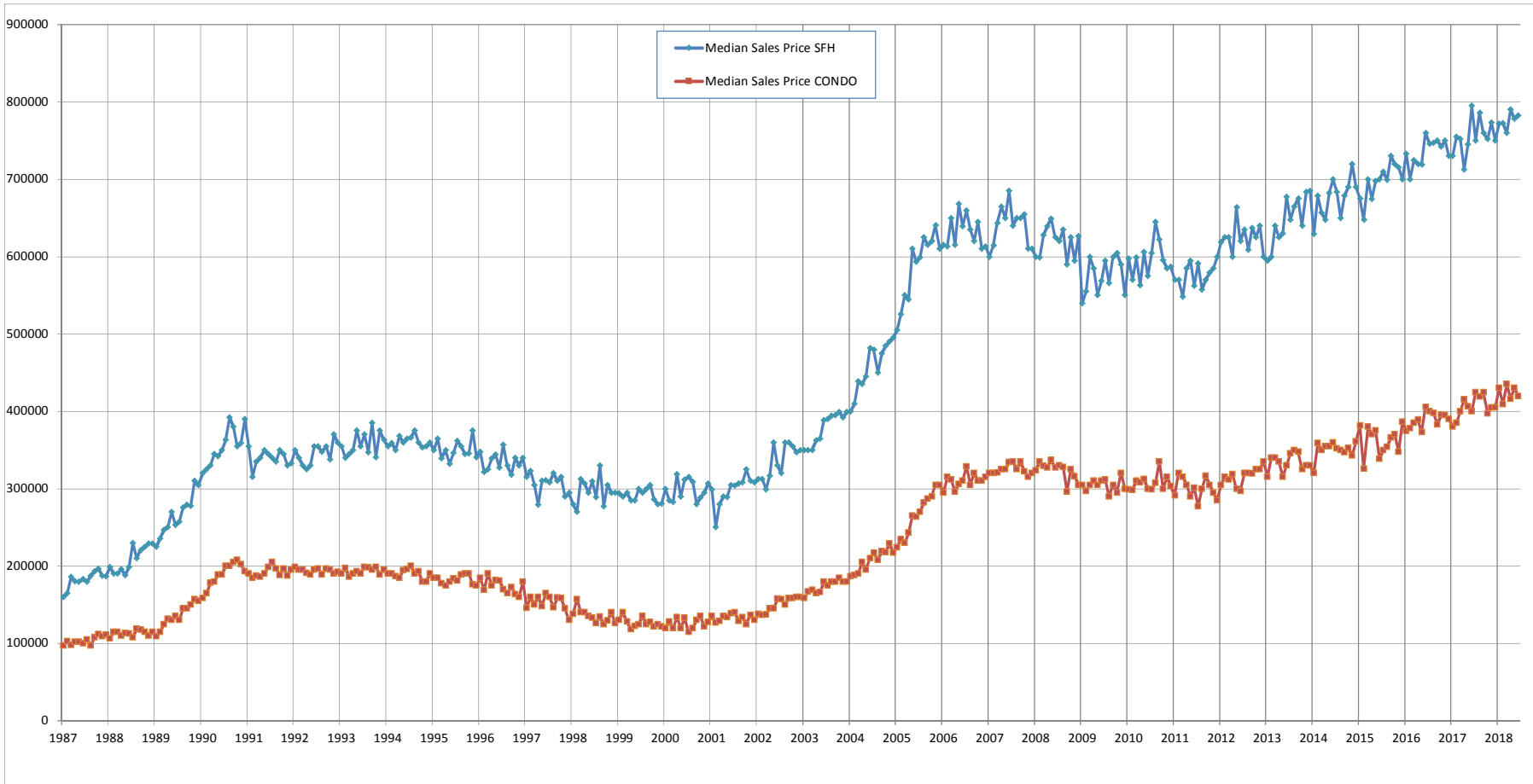




# Median Sales Price

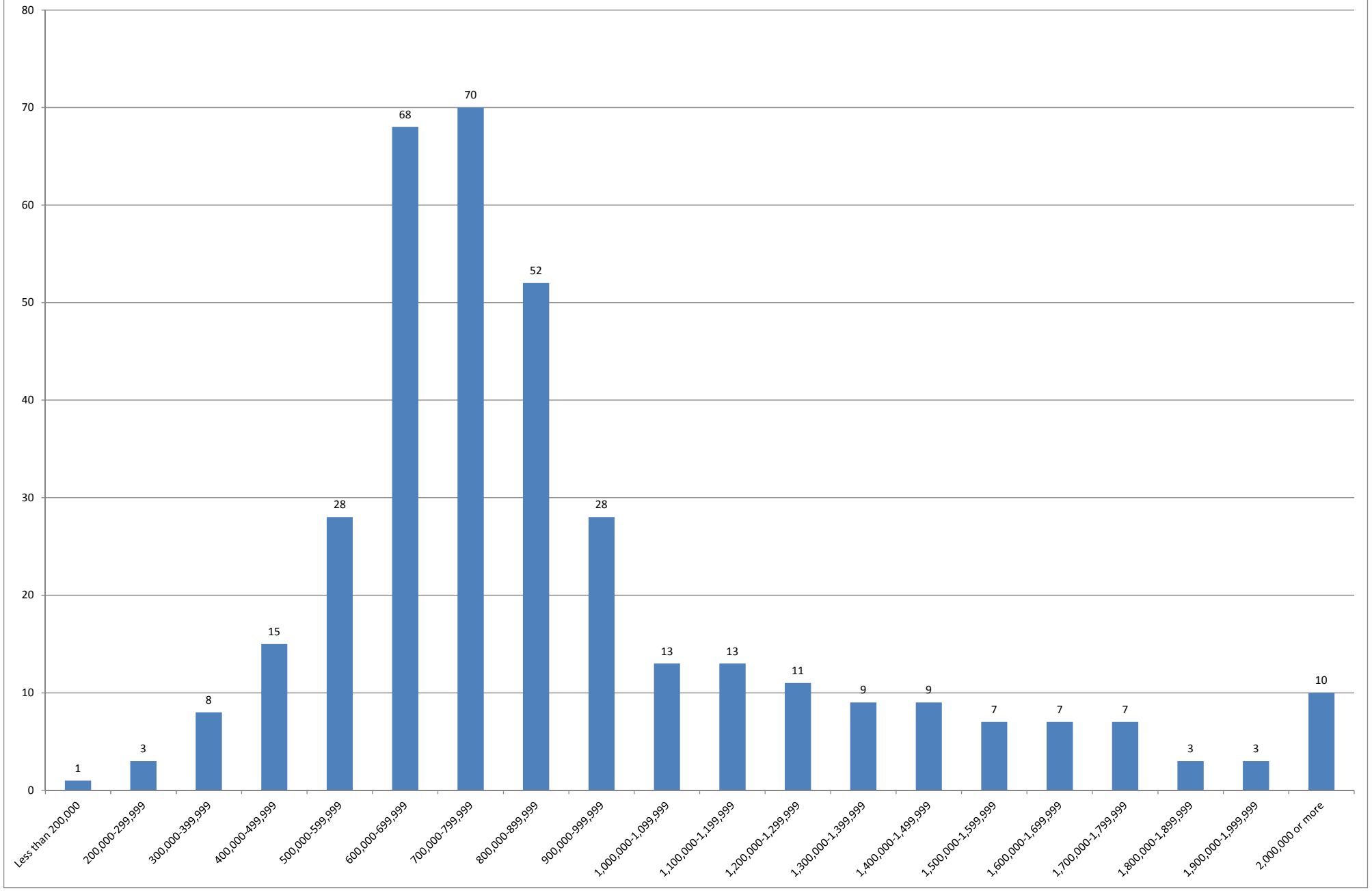
## Single Family Homes and Condos

OAHU, HAWAII: Jan 1987 to the Present



SOURCE: Honolulu Board of REALTORS® , compiled from MLS data.

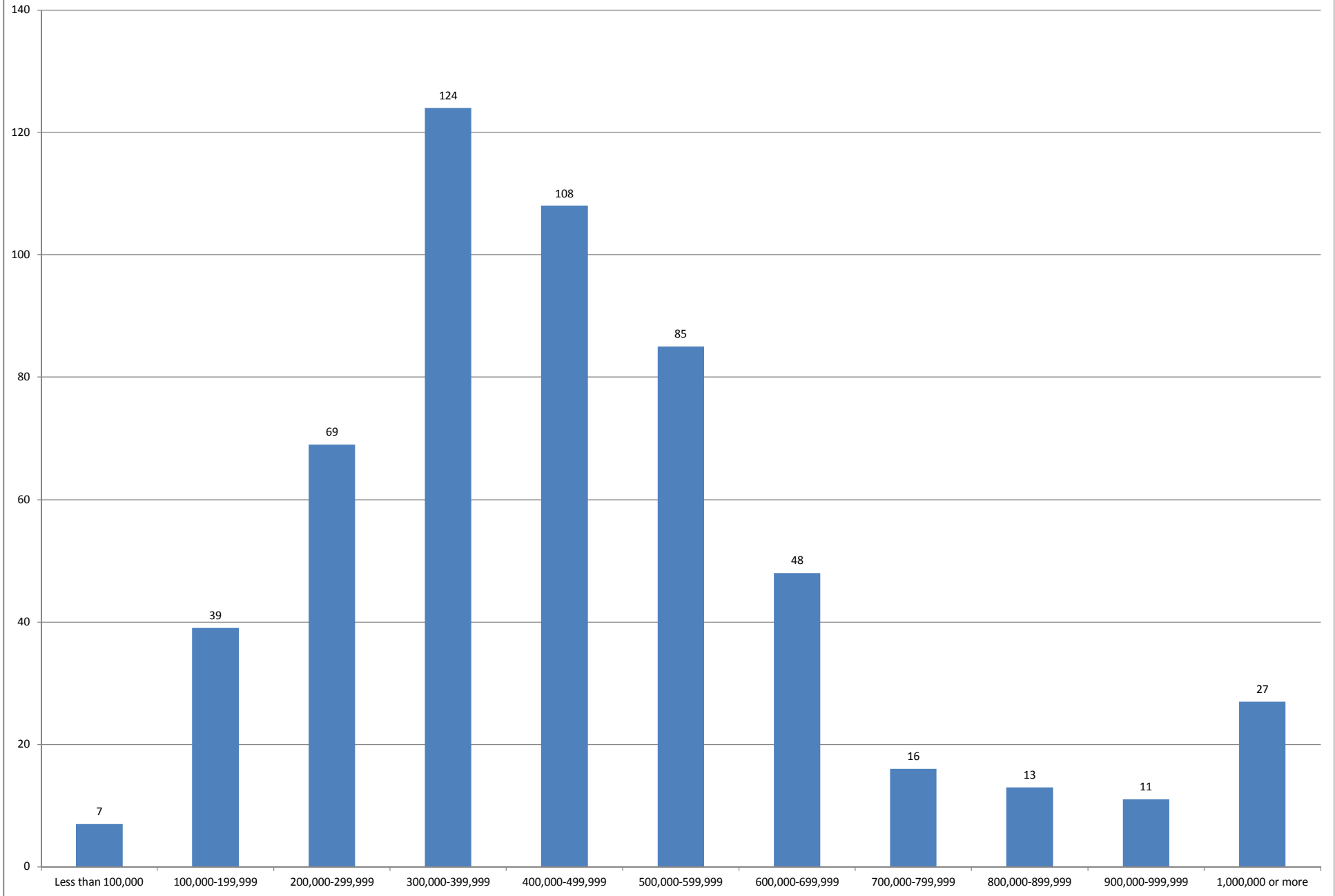
### June 2018 Single Family Homes Sold



SOURCE: Honolulu Board of REALTORS®, compiled from MLS data.



### June 2018 Condos Sold



SOURCE: Honolulu Board of REALTORS® , compiled from MLS data.