

Monthly Housing Statistics

July 2017



SINGLE FAMILY HOMES

Median Sales Price	
\$750,000	+0.5%
Closed Sales	
335	+4.0%
Average Sales Price	
\$886,261	+0.3%

CONDOS

Median Sales Price	
\$425,000	+6.3%
Closed Sales	
475	+7.0%
Average Sales Price	
\$478,873	+4.1%

INDEX:

Monthly Indicators	2
Closed Sales	3
Median Sales Price	4
Median Days on Market	5
New Listings	6
Pending Sales	7
Months of Inventory	8
Active Listings	9
Average Sales Price	10
% of Original Listing Price Received	11
Active Continue to Show	12
Housing Supply Overview	13
Pending Sales (by price range)	14-15
Median Days on Market (by price range)	16-17
% of list price received (by price range)	18-19
Inventory of Homes (by price range)	20-21
Months Supply of Inventory (price range)	22-23
Historical Graphs	24-25
Price Graphs	26-27

Monthly Indicators

July 2017

	Single Family Homes					
	Jul-17	Jul-16	%	YTD-17	YTD-16	%
Closed Sales	335	322	4.0%	2,124	2,050	3.6%
Median Sales Price	\$750,000	\$746,000	0.5%	\$750,000	\$730,000	2.7%
Median Days on Market	20	16	25.0%	16	17	-5.9%
New Listings	481	428	12.4%	3,166	3,083	2.7%
Pending Sales	595	443	34.3%	3,773	2,930	28.8%
Months of Inventory	2.5	3.1	-19.4%	--	--	--
Active Listings	1,221	1,271	-3.9%	--	--	--
Average Sales Price	\$886,261	\$883,952	0.3%	\$911,614	\$895,740	1.8%
% of Original Listing Price Received	96.8%	99.6%	-2.8%	98.7%	98.0%	0.7%

	Condos					
	Jul-17	Jul-16	%	YTD-17	YTD-16	%
Closed Sales	475	444	7.0%	3,272	3,140	4.2%
Median Sales Price	\$425,000	\$400,000	6.3%	\$400,000	\$385,000	3.9%
Median Days on Market	14	18	-22.2%	16	19	-15.8%
New Listings	674	605	11.4%	4,700	4,371	7.5%
Pending Sales	779	621	25.4%	5,260	4,297	22.4%
Months of Inventory	2.7	3.0	-10.0%	--	--	--
Active Listings	1,826	1,803	1.3%	--	--	--
Average Sales Price	\$478,873	\$459,859	4.1%	\$465,492	\$446,201	4.3%
% of Original Listing Price Received	100.0%	100.0%	0.0%	98.8%	98.7%	0.1%

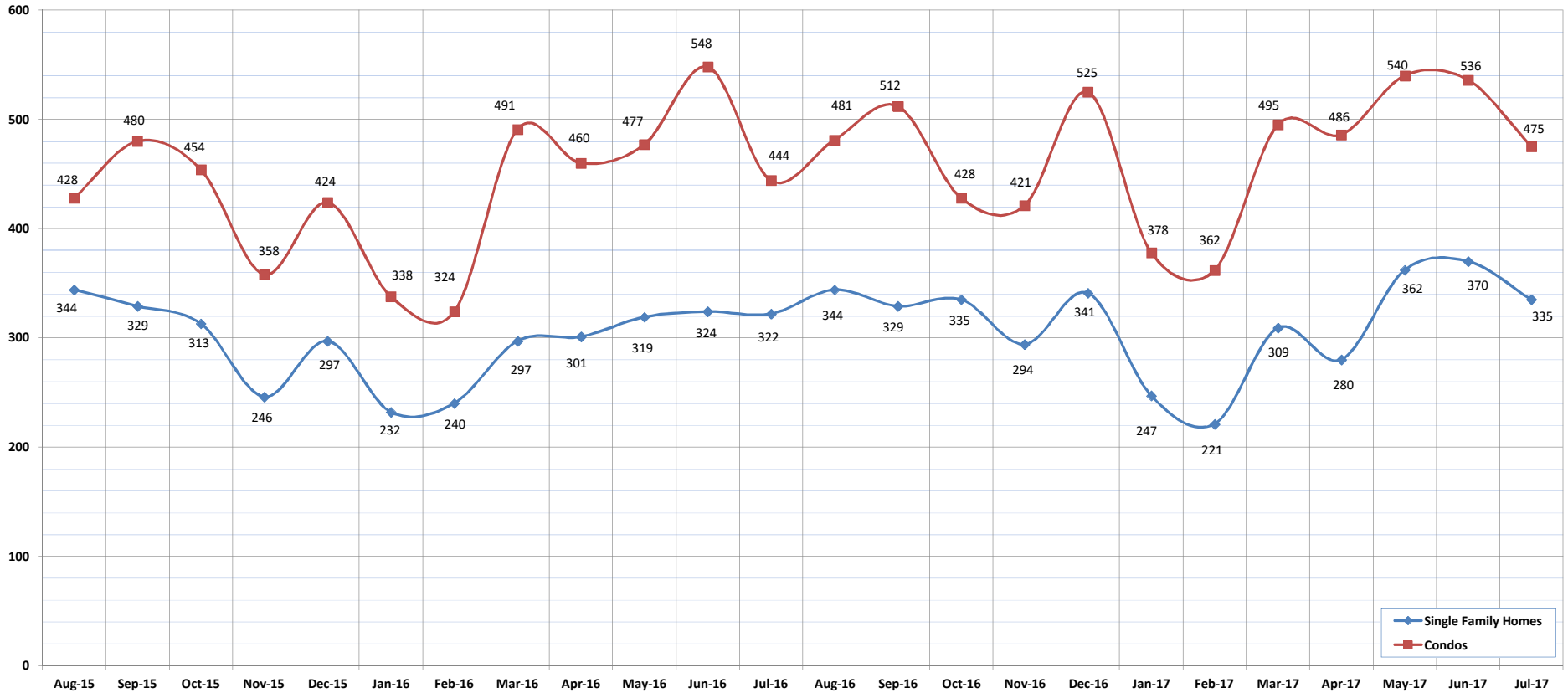
SOURCE: Honolulu Board of REALTORS® , compiled from MLS data.

Closed Sales

July-17

OAHU, HAWAII

(A count of all properties that have closed in a given month.)



	Aug-15	Sep-15	Oct-15	Nov-15	Dec-15	Jan-16	Feb-16	Mar-16	Apr-16	May-16	Jun-16	Jul-16	Aug-16	Sep-16	Oct-16	Nov-16	Dec-16	Jan-17	Feb-17	Mar-17	Apr-17	May-17	Jun-17	Jul-17
Closed Sales: Single Family Homes	344	329	313	246	297	232	240	297	301	319	324	322	344	329	335	294	341	247	221	309	280	362	370	335
Closed Sales: Condos	428	480	454	358	424	338	324	491	460	477	548	444	481	512	428	421	525	378	362	495	486	540	536	475
Closed Sales: Total	772	809	767	604	721	570	564	788	761	796	872	766	825	841	763	715	866	625	583	804	766	902	906	810

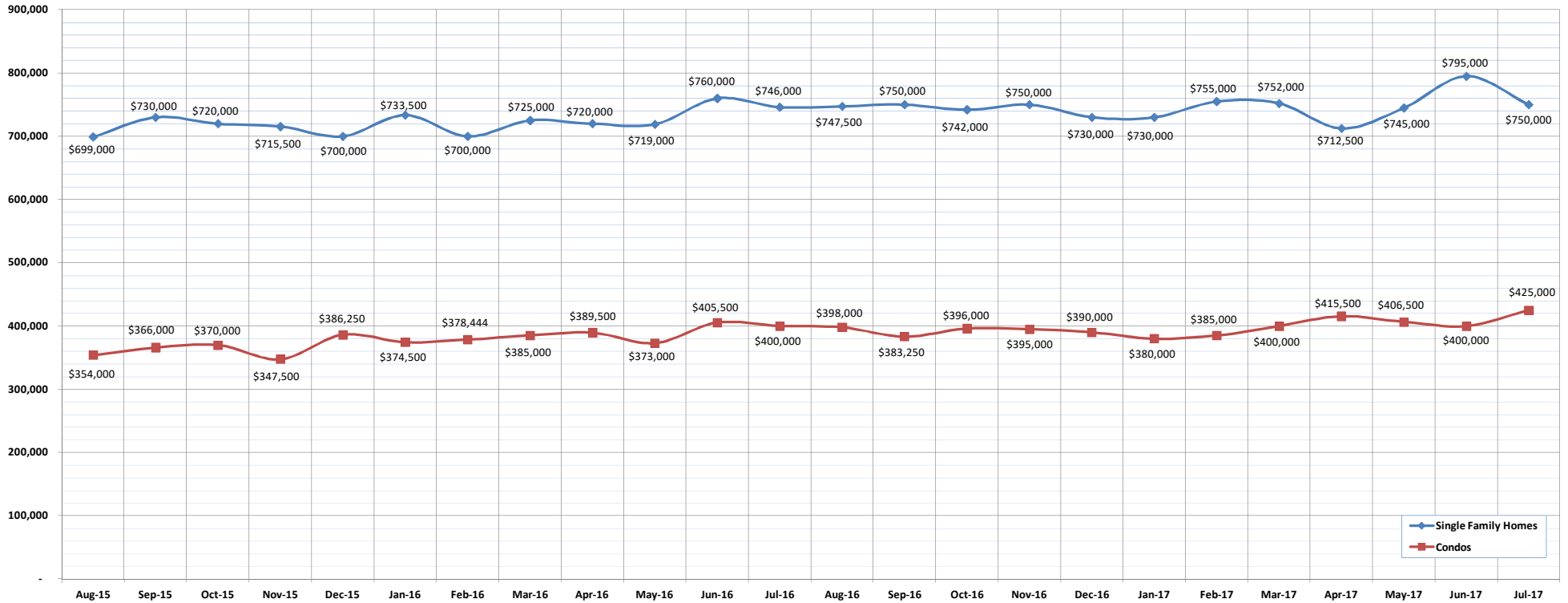
SOURCE: Honolulu Board of REALTORS®, compiled from MLS data.

Median Sales Price

July-17

OAHU, HAWAII

(The median sales price for all closed properties in a given month.)



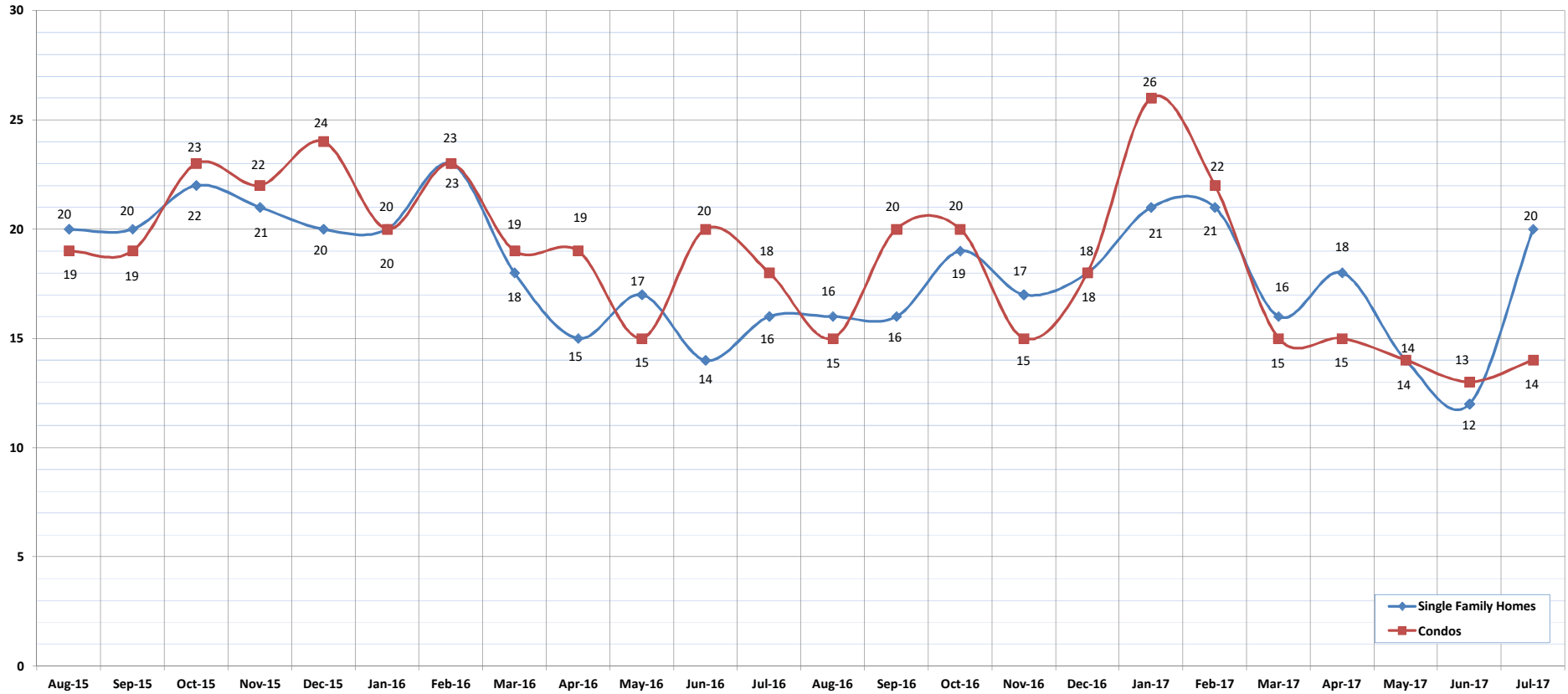
	Aug-15	Sep-15	Oct-15	Nov-15	Dec-15	Jan-16	Feb-16	Mar-16	Apr-16	May-16	Jun-16	Jul-16	Aug-16	Sep-16	Oct-16	Nov-16	Dec-16	Jan-17	Feb-17	Mar-17	Apr-17	May-17	Jun-17	Jul-17
Median Sales Price : SFH	699,000	730,000	720,000	715,500	700,000	733,500	700,000	725,000	720,000	719,000	760,000	746,000	747,500	750,000	742,000	750,000	730,000	730,000	755,000	752,000	712,500	745,000	795,000	750,000
Median Sales Price: Condos	354,000	366,000	370,000	347,500	386,250	374,500	378,444	385,000	389,500	373,000	405,500	400,000	398,000	383,250	396,000	395,000	390,000	380,000	385,000	400,000	415,500	406,500	400,000	425,000

Median Days on Market

July-17

OAHU, HAWAII

(The median number of days between when a property is first listed and when an offer is accepted.)



	Aug-15	Sep-15	Oct-15	Nov-15	Dec-15	Jan-16	Feb-16	Mar-16	Apr-16	May-16	Jun-16	Jul-16	Aug-16	Sep-16	Oct-16	Nov-16	Dec-16	Jan-17	Feb-17	Mar-17	Apr-17	May-17	Jun-17	Jul-17
Median Days on Market: SFH	20	20	22	21	20	20	23	18	15	17	14	16	16	16	19	17	18	21	21	16	18	14	12	20
Median Days on Market: Condos	19	19	23	22	24	20	23	19	19	15	20	18	15	20	20	15	18	26	22	15	15	14	13	14

SOURCE: Honolulu Board of REALTORS®, compiled from MLS data.

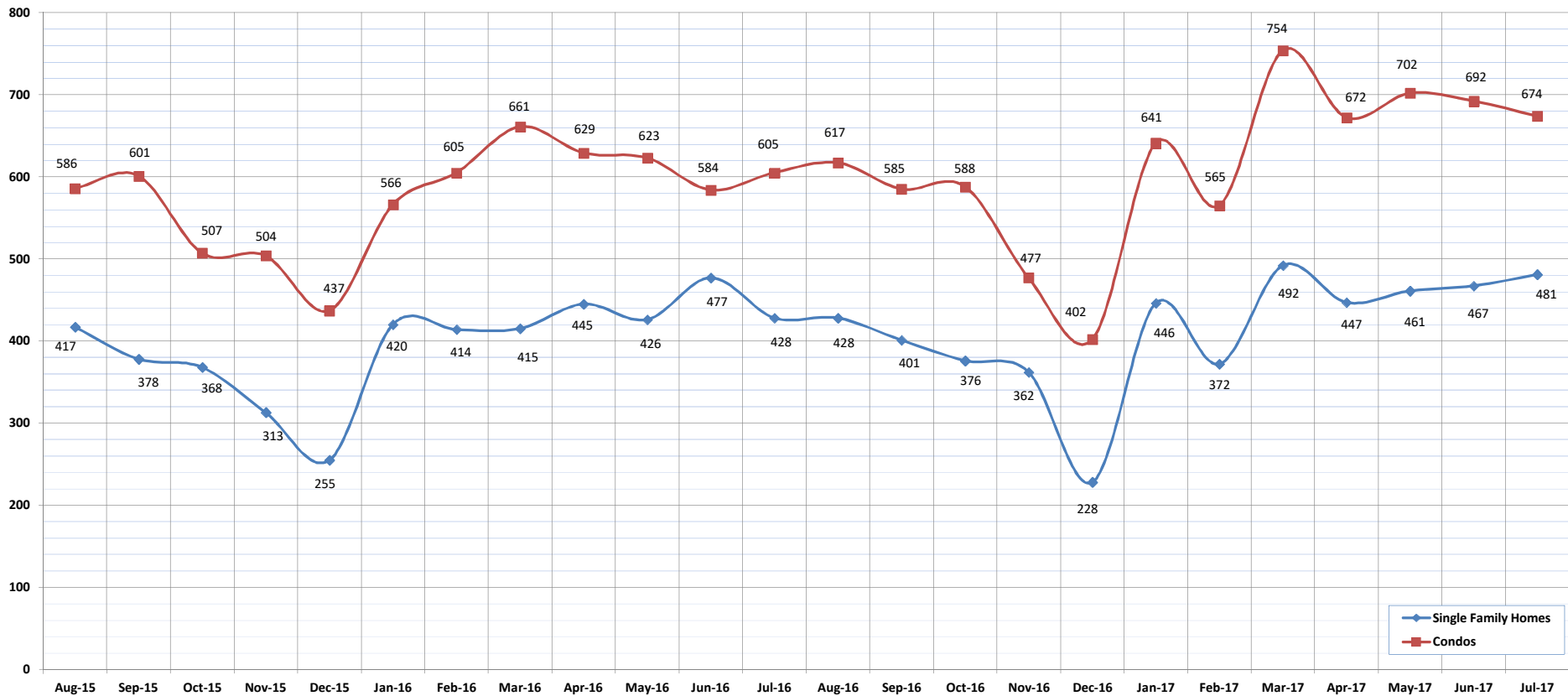


New Listings

July-17

OAHU, HAWAII

(A count of the properties that have been newly listed on the market in a given month.)



	Aug-15	Sep-15	Oct-15	Nov-15	Dec-15	Jan-16	Feb-16	Mar-16	Apr-16	May-16	Jun-16	Jul-16	Aug-16	Sep-16	Oct-16	Nov-16	Dec-16	Jan-17	Feb-17	Mar-17	Apr-17	May-17	Jun-17	Jul-17
New Listings: Single Family Homes	417	378	368	313	255	420	414	415	445	426	477	428	428	401	376	362	228	446	372	492	447	461	467	481
New Listings: Condos	586	601	507	504	437	566	605	661	629	623	584	605	617	585	588	477	402	641	565	754	672	702	692	674
New Listings: Total	1003	979	875	817	692	986	1019	1076	1074	1049	1061	1033	1045	986	964	839	630	1087	937	1246	1119	1163	1159	1155

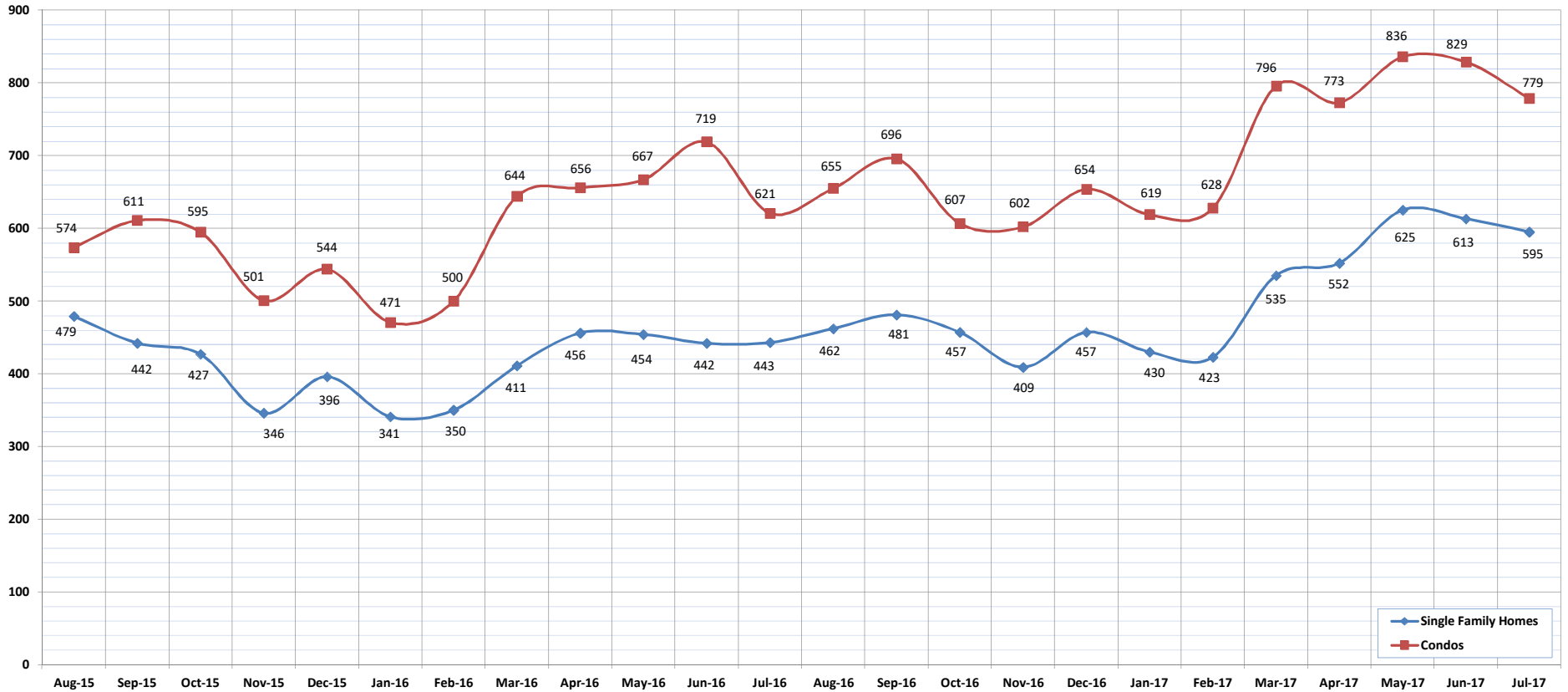
SOURCE: Honolulu Board of REALTORS®, compiled from MLS data.

Pending Sales

July-17

OAHU, HAWAII

(A count of the properties that have offers accepted on them in a given month.)



	Aug-15	Sep-15	Oct-15	Nov-15	Dec-15	Jan-16	Feb-16	Mar-16	Apr-16	May-16	Jun-16	Jul-16	Aug-16	Sep-16	Oct-16	Nov-16	Dec-16	Jan-17	Feb-17	Mar-17	Apr-17	May-17	Jun-17	Jul-17
Pending Sales: Single Family Homes	479	442	427	346	396	341	350	411	456	454	442	443	462	481	457	409	457	430	423	535	552	625	613	595
Pending Sales: Condos	574	611	595	501	544	471	500	644	656	667	719	621	655	696	607	602	654	619	628	796	773	836	829	779
Pending Sales: Total	1053	1053	1022	847	940	812	850	1055	1112	1121	1161	1064	1117	1177	1064	1011	1111	1049	1051	1331	1325	1461	1442	1374

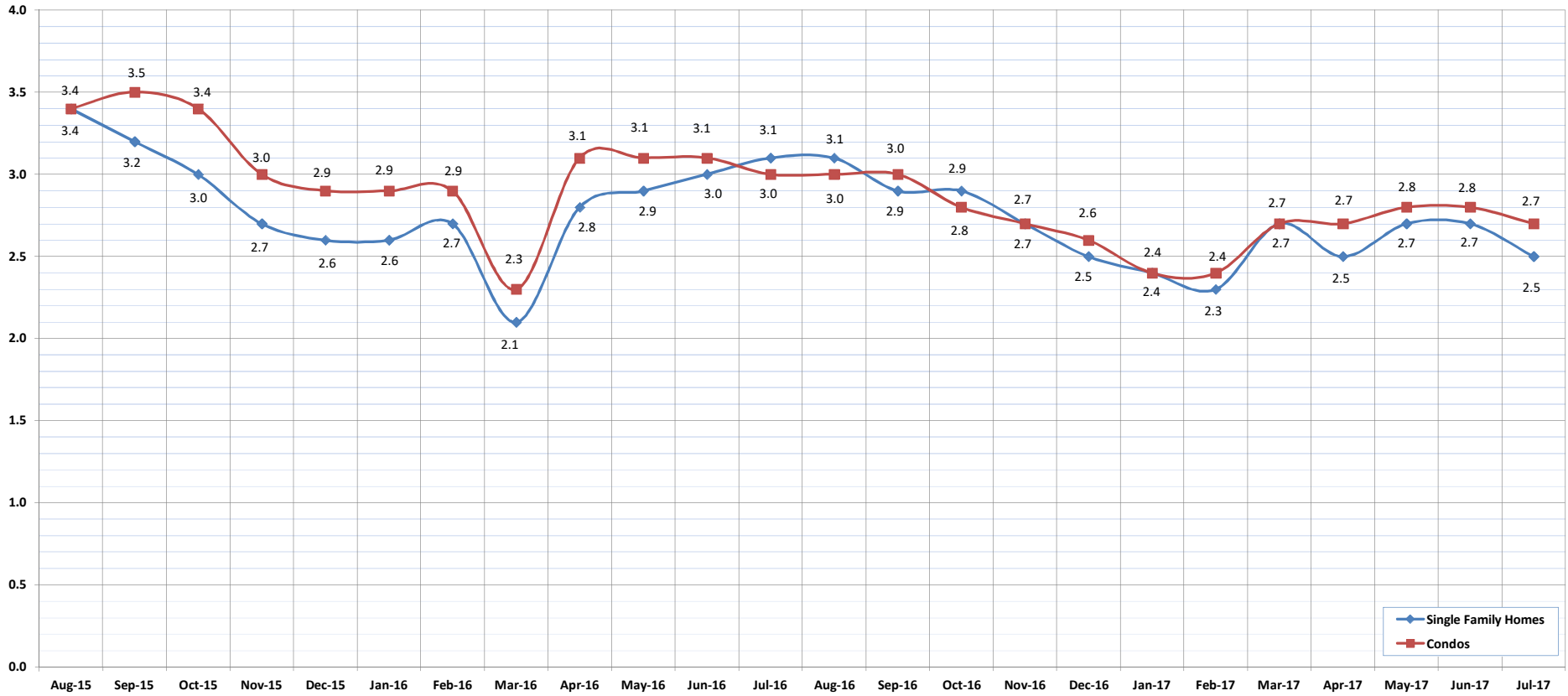
SOURCE: Honolulu Board of REALTORS®, compiled from MLS data.

Months of Inventory

July-17

OAHU, HAWAII

(Compares the number of active listings available to the average monthly pending sales.)



	Aug-15	Sep-15	Oct-15	Nov-15	Dec-15	Jan-16	Feb-16	Mar-16	Apr-16	May-16	Jun-16	Jul-16	Aug-16	Sep-16	Oct-16	Nov-16	Dec-16	Jan-17	Feb-17	Mar-17	Apr-17	May-17	Jun-17	Jul-17
Month of Inventory : SFH	3.4	3.2	3.0	2.7	2.6	2.6	2.7	2.1	2.8	2.9	3.0	3.1	3.1	2.9	2.9	2.7	2.5	2.4	2.3	2.7	2.5	2.7	2.7	2.5
Months of Inventory: Condos	3.4	3.5	3.4	3.0	2.9	2.9	2.9	2.3	3.1	3.1	3.1	3.0	3.0	3.0	2.8	2.7	2.6	2.4	2.4	2.7	2.7	2.8	2.8	2.7

SOURCE: Honolulu Board of REALTORS®, compiled from MLS data.

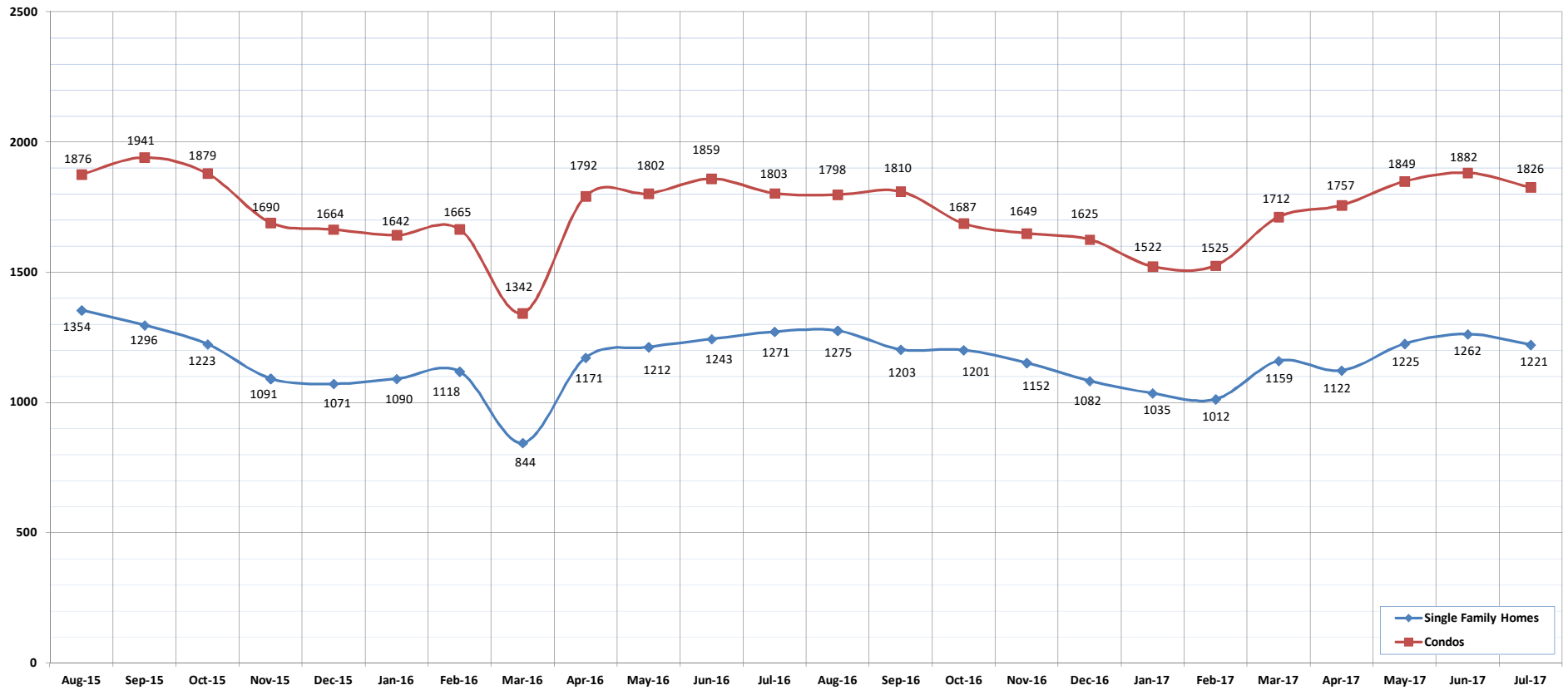


Active Listings

July-17

OAHU, HAWAII

(The number of properties available for purchase during a given month.)



	Aug-15	Sep-15	Oct-15	Nov-15	Dec-15	Jan-16	Feb-16	Mar-16	Apr-16	May-16	Jun-16	Jul-16	Aug-16	Sep-16	Oct-16	Nov-16	Dec-16	Jan-17	Feb-17	Mar-17	Apr-17	May-17	Jun-17	Jul-17	
Active Listings: Single Family Homes	1354	1296	1223	1091	1071	1090	1118	844	1171	1212	1243	1271	1275	1203	1201	1152	1082	1035	1012	1159	1122	1225	1262	1221	
Active Listings: Condos	1876	1941	1879	1690	1664	1642	1665	1342	1792	1802	1859	1803	1798	1810	1687	1649	1625	1522	1525	1712	1757	1757	1849	1882	1826
Active Listings: Total	3230	3237	3102	2781	2735	2732	2783	2186	2963	3014	3102	3074	3073	3013	2888	2801	2707	2557	2537	2871	2879	3074	3144	3047	

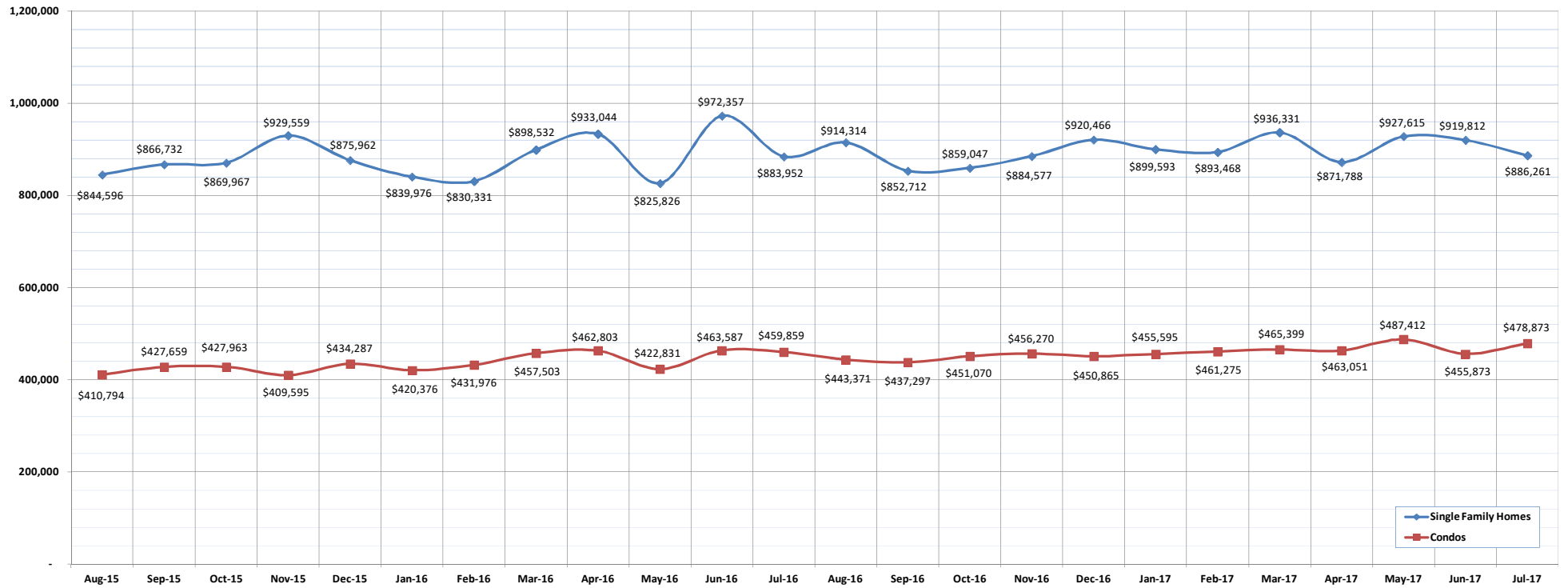
SOURCE: Honolulu Board of REALTORS®, compiled from MLS data.

Average Sales Price

July-17

OAHU, HAWAII

(The average sales price for all closed sales in a given month.)



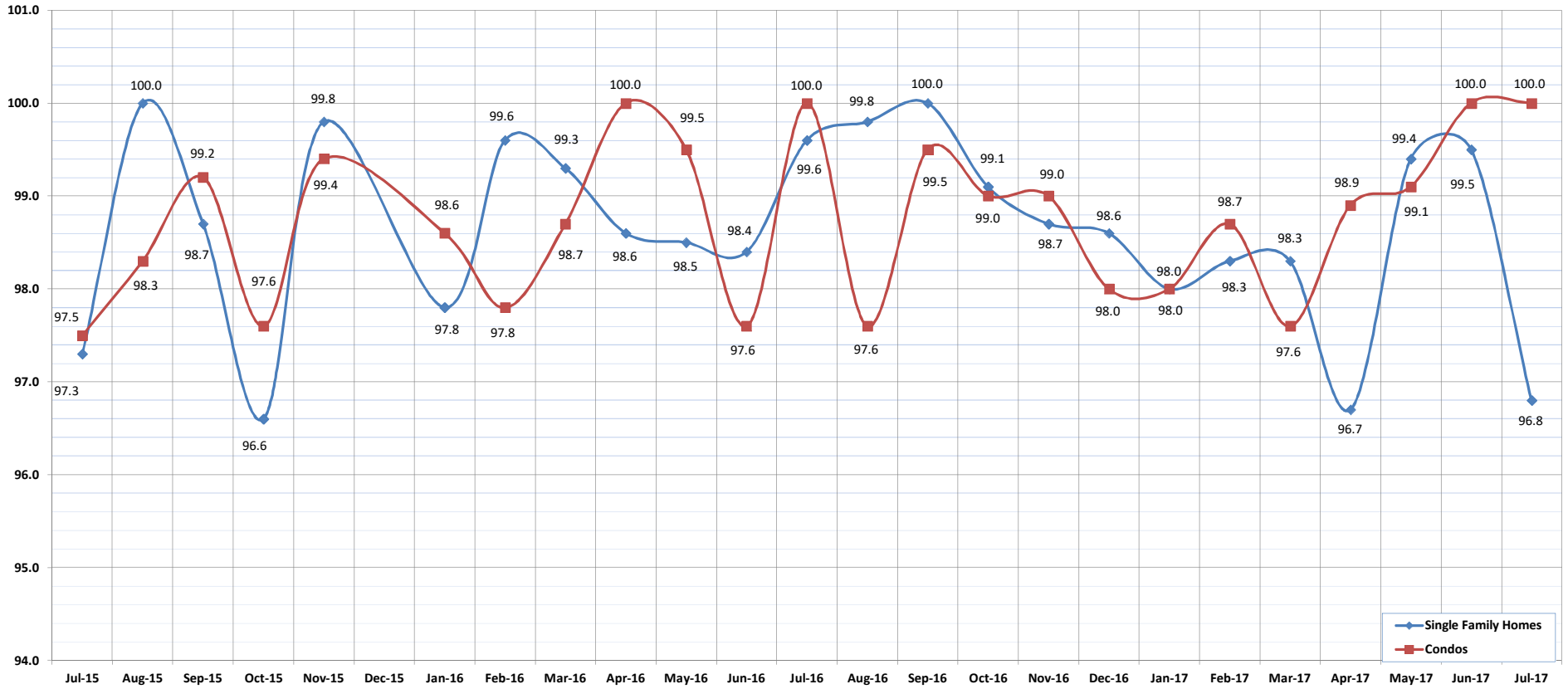
	Aug-15	Sep-15	Oct-15	Nov-15	Dec-15	Jan-16	Feb-16	Mar-16	Apr-16	May-16	Jun-16	Jul-16	Aug-16	Sep-16	Oct-16	Nov-16	Dec-16	Jan-17	Feb-17	Mar-17	Apr-17	May-17	Jun-17	Jul-17
Average Sales Price: SFH	844,596	866,732	869,967	929,559	875,962	839,976	830,331	898,532	933,044	825,826	972,357	883,952	914,314	852,712	859,047	884,577	920,466	899,593	893,468	936,331	871,788	927,615	919,812	886,261
Average Sales Price: Condos	410,794	427,659	427,963	409,595	434,287	420,376	431,976	457,503	462,803	422,831	463,587	459,859	443,371	437,297	451,070	456,270	450,865	455,595	461,275	465,399	463,051	487,412	455,873	478,873

Percent of Original List Price Received

July-17

OAHU, HAWAII

(The percentage found when dividing a property's sales price by the original list price.)



	Jul-15	Aug-15	Sep-15	Oct-15	Nov-15	Jan-16	Feb-16	Mar-16	Apr-16	May-16	Jun-16	Jul-16	Aug-16	Sep-16	Oct-16	Nov-16	Dec-16	Jan-17	Feb-17	Mar-17	Apr-17	May-17	Jun-17	Jul-17
Percent of Original List Price: SFH	97.3	100.0	98.7	96.6	99.8	97.8	99.6	99.3	98.6	98.5	98.4	99.6	99.8	100.0	99.1	98.7	98.6	98.0	98.3	98.3	96.7	99.4	99.5	96.8
Percent of Original List Price: Condos	97.5	98.3	99.2	97.6	99.4	98.6	97.8	98.7	100.0	99.5	97.6	100.0	97.6	99.5	99.0	99.0	98.0	98.0	98.7	97.6	98.9	99.1	100.0	100.0

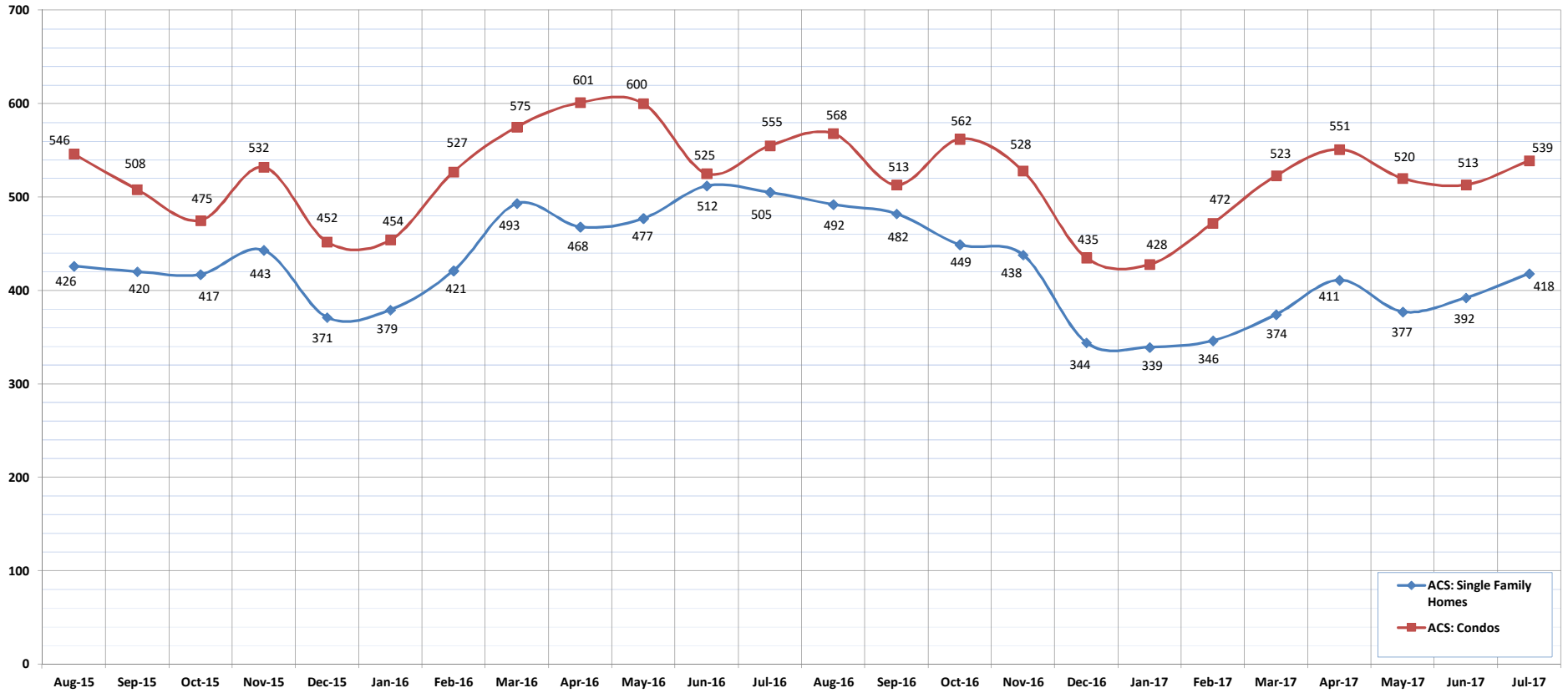
SOURCE: Honolulu Board of REALTORS®, compiled from MLS data.

Active Continue to Show

July-17

OAHU, HAWAII

(A count of the properties that are in ACS during the current month.)



	Aug-15	Sep-15	Oct-15	Nov-15	Dec-15	Jan-16	Feb-16	Mar-16	Apr-16	May-16	Jun-16	Jul-16	Aug-16	Sep-16	Oct-16	Nov-16	Dec-16	Jan-17	Feb-17	Mar-17	Apr-17	May-17	Jun-17	Jul-17
ACS: Single Family Homes	426	420	417	443	371	379	421	493	468	477	512	505	492	482	449	438	344	339	346	374	411	377	392	418
ACS: Condos	546	508	475	532	452	454	527	575	601	600	525	555	568	513	562	528	435	428	472	523	551	520	513	539

SOURCE: Honolulu Board of REALTORS®, compiled from MLS data.

Housing Supply Overview

July 2017

Single Family Homes	Pending Sales			Days on Market			Percentage of Original Price Received			Inventory of Homes for Sale			Months Supply of Inventory		
	Jul-17	Jul-16	%	Jul-17	Jul-16	%	Jul-17	Jul-16	%	Jul-17	Jul-16	%	Jul-17	Jul-16	%
\$350,000 and Below	165	124	33.1%	36	36	0.0%	96.0%	94.2%	1.9%	19	38	-50.0%	1.9	3.2	-40.6%
\$350,001 - \$475,000	230	244	-5.7%	25	20	25.0%	97.9%	97.1%	0.8%	42	57	-26.3%	2.2	2.3	-4.3%
\$475,001 - \$550,000	312	354	-11.9%	15	15	0.0%	99.3%	98.9%	0.4%	55	48	14.6%	2.0	1.5	33.3%
\$550,001 - \$650,000	716	677	5.8%	13	13	0.0%	99.8%	99.3%	0.5%	123	127	-3.1%	2.1	2.3	-8.7%
\$650,001 - \$800,000	1146	919	24.7%	17	19	-10.5%	99.0%	98.5%	0.5%	237	234	1.3%	2.7	3.2	-15.6%
\$800,001 - \$1.1M	961	782	22.9%	17	23	-26.1%	98.5%	97.0%	1.5%	248	256	-3.1%	3.4	4.3	-20.9%
\$1.1M - \$1.9M	595	457	30.2%	27	30	-10.0%	96.7%	95.5%	1.3%	268	249	7.6%	6.2	6.7	-7.5%
\$1.9M and Above	183	171	7.0%	74	63	17.5%	90.6%	94.3%	-3.9%	229	262	-12.6%	15.8	19.0	-16.8%
All Single Family Homes	4308	3728	15.6%	18	19	-5.3%	98.7%	98.8%	-0.1%	1221	1271	-3.9%	3.7	4.1	-9.8%

Condos	Pending Sales			Days on Market			Percentage of Original Price Received			Inventory of Homes for Sale			Months Supply of Inventory		
	Jul-17	Jul-16	%	Jul-17	Jul-16	%	Jul-17	Jul-16	%	Jul-17	Jul-16	%	Jul-17	Jul-16	%
\$150,000 and below	354	375	-5.6%	41	43	-4.7%	91.7%	89.4%	2.6%	156	165	-5.5%	4.9	5.0	-2.0%
\$150,001 - \$200,000	362	313	15.7%	23	29	-20.7%	96.4%	96.2%	0.2%	81	103	-21.4%	2.9	3.6	-19.4%
\$200,001 - \$250,000	413	406	1.7%	22	26	-15.4%	97.0%	97.2%	-0.2%	141	115	22.6%	4.1	3.2	28.1%
\$250,001 - \$300,000	518	615	-15.8%	21	18	16.7%	97.9%	98.5%	-0.6%	120	140	-14.3%	2.6	2.5	4.0%
\$300,001 - \$375,000	1113	1028	8.3%	13	15	-13.3%	99.4%	98.2%	1.2%	227	214	6.1%	2.6	2.5	4.0%
\$375,001 - \$475,000	1187	1102	7.7%	13	15	-13.3%	98.8%	98.5%	0.3%	265	264	0.4%	2.8	3.0	-6.7%
\$475,001 - \$700,000	1426	1094	30.3%	16	19	-15.8%	98.7%	98.4%	0.3%	401	371	8.1%	3.7	4.6	-19.6%
\$700,001 and above	633	533	18.8%	47	47	0.0%	95.8%	94.9%	0.9%	435	431	0.9%	8.9	10.3	-13.6%
All Condos	6006	5466	9.9%	18	20	-10.0%	98.8%	98.8%	0.0%	1826	1803	1.3%	3.8	4.0	-5.0%

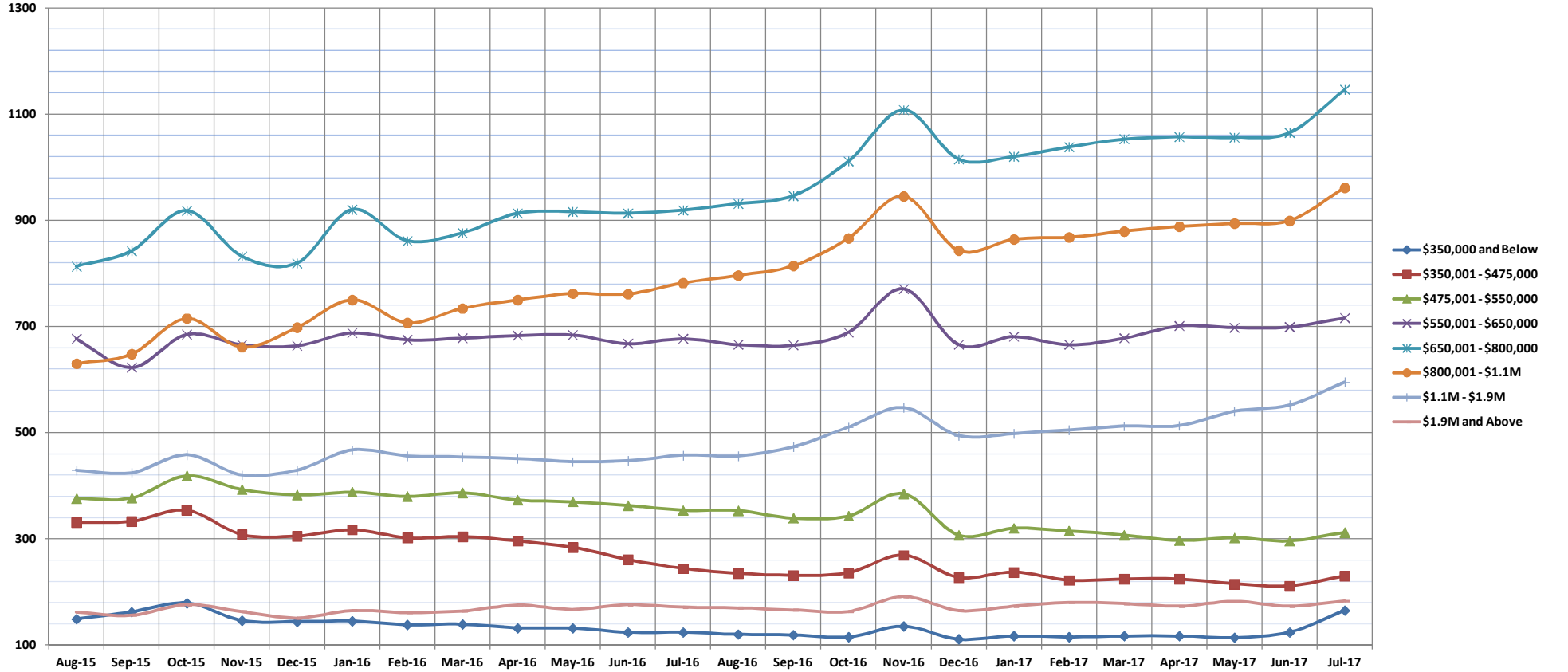
SOURCE: Honolulu Board of REALTORS®, compiled from MLS data.

Pending Sales

Jul-17

Single Family Homes: Monthly, by Price Range

(A count of properties that have offers accepted on them in a given month. Based on a 12 month rolling total.)



	Aug-15	Sep-15	Oct-15	Nov-15	Dec-15	Jan-16	Feb-16	Mar-16	Apr-16	May-16	Jun-16	Jul-16	Aug-16	Sep-16	Oct-16	Nov-16	Dec-16	Jan-17	Feb-17	Mar-17	Apr-17	May-17	Jun-17	Jul-17	
\$350,000 and Below	149	162	179	146	144	145	138	139	132	132	124	124	120	119	115	135	111	117	115	117	117	117	114	124	165
\$350,001 - \$475,000	331	333	354	308	305	317	302	304	296	284	261	244	235	231	236	269	227	237	222	224	224	224	215	211	230
\$475,001 - \$550,000	376	377	419	393	383	388	380	387	373	370	363	354	353	339	343	385	307	320	315	307	297	302	296	312	
\$550,001 - \$650,000	677	623	685	666	664	688	675	678	683	684	668	677	666	665	689	771	666	681	666	678	701	698	699	716	
\$650,001 - \$800,000	813	842	918	832	819	920	861	876	913	916	913	919	931	946	1011	1108	1015	1020	1038	1053	1057	1056	1065	1146	
\$800,001 - \$1.1M	630	648	715	661	698	750	707	734	750	762	761	782	796	814	866	945	843	864	868	879	888	894	899	961	
\$1.1M - \$1.9M	429	424	458	420	429	467	456	454	451	445	447	457	456	473	510	547	494	498	505	512	513	540	552	595	
\$1.9M and Above	162	156	176	163	151	165	161	164	175	167	176	171	170	166	163	191	165	173	180	178	173	182	173	183	
All Single Family Homes	3567	3565	3904	3589	3593	3840	3680	3736	3773	3760	3713	3728	3727	3753	3933	4351	3828	3910	3909	3948	3970	4001	4019	4308	

SOURCE: Honolulu Board of REALTORS®, compiled from MLS data.

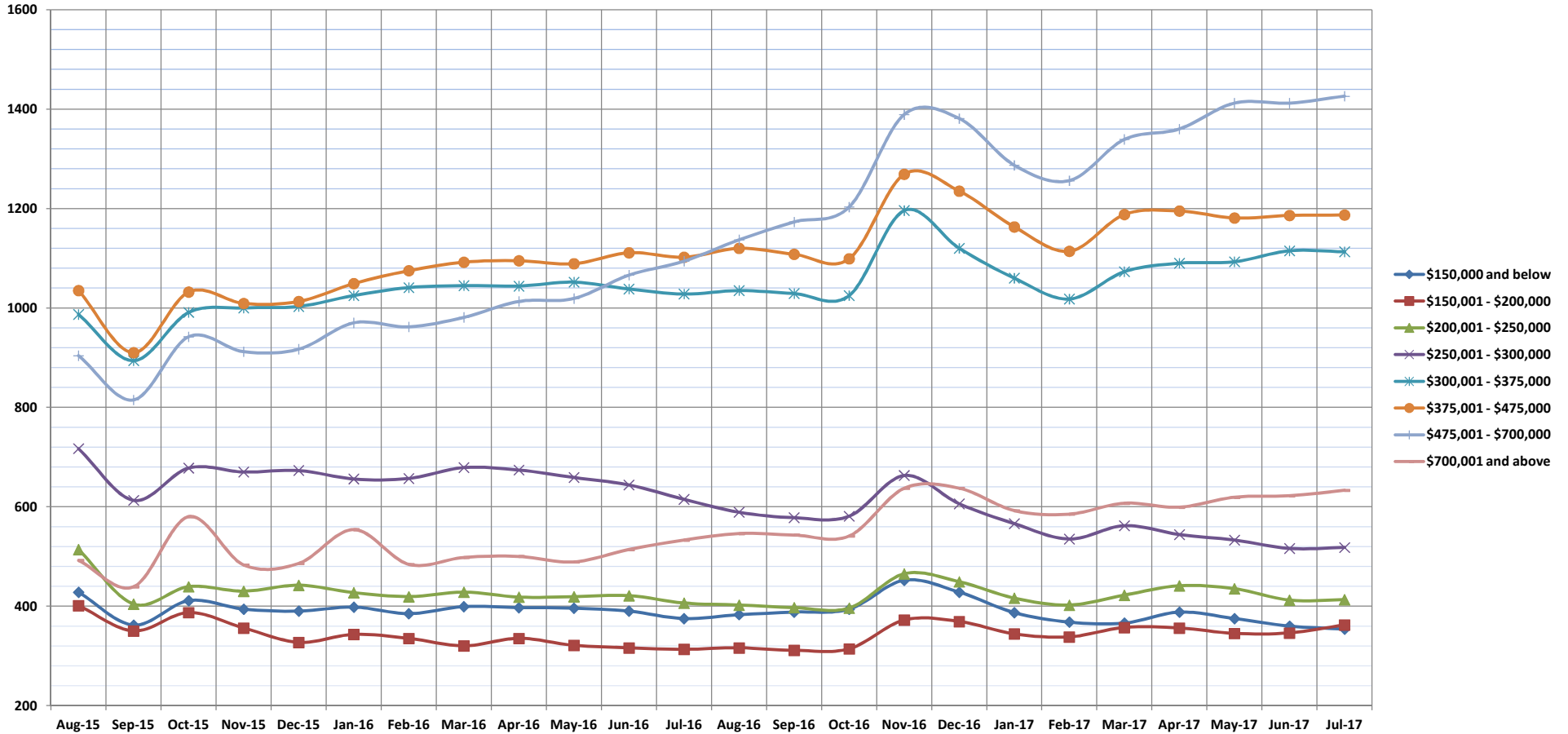


Pending Sales

Jul-17

Condos: Monthly, by Price Range

(A count of properties that have offers accepted on them in a given month. Based on a 12 month rolling total.)



	Aug-15	Sep-15	Oct-15	Nov-15	Dec-15	Jan-16	Feb-16	Mar-16	Apr-16	May-16	Jun-16	Jul-16	Aug-16	Sep-16	Oct-16	Nov-16	Dec-16	Jan-17	Feb-17	Mar-17	Apr-17	May-17	Jun-17	Jul-17
\$150,000 and below	428	362	411	394	390	398	385	399	397	396	390	375	383	388	394	452	428	387	368	366	388	375	360	354
\$150,001 - \$200,000	401	350	387	356	327	343	335	320	335	321	316	313	316	311	314	372	369	344	338	357	356	345	346	362
\$200,001 - \$250,000	514	404	439	430	442	427	419	428	418	419	421	406	402	397	396	465	449	416	402	422	441	435	412	413
\$250,001 - \$300,000	717	613	678	670	673	656	657	679	674	659	644	615	589	578	581	663	606	566	535	562	544	533	516	518
\$300,001 - \$375,000	987	894	991	1000	1003	1025	1041	1045	1044	1052	1038	1028	1035	1029	1025	1196	1120	1060	1018	1073	1090	1093	1115	1113
\$375,001 - \$475,000	1035	910	1032	1009	1013	1049	1075	1092	1095	1089	1111	1102	1120	1108	1099	1269	1235	1163	1114	1188	1195	1181	1186	1187
\$475,001 - \$700,000	904	815	942	912	917	970	962	981	1013	1019	1066	1094	1137	1173	1203	1389	1381	1287	1256	1339	1360	1412	1412	1426
\$700,001 and above	492	439	580	483	486	554	484	498	500	489	514	533	546	543	541	637	637	592	585	607	599	619	622	633
All Condos	5478	4787	5460	5254	5251	5422	5358	5442	5476	5444	5500	5466	5528	5527	5553	6443	6225	5815	5616	5914	5973	5993	5969	6006

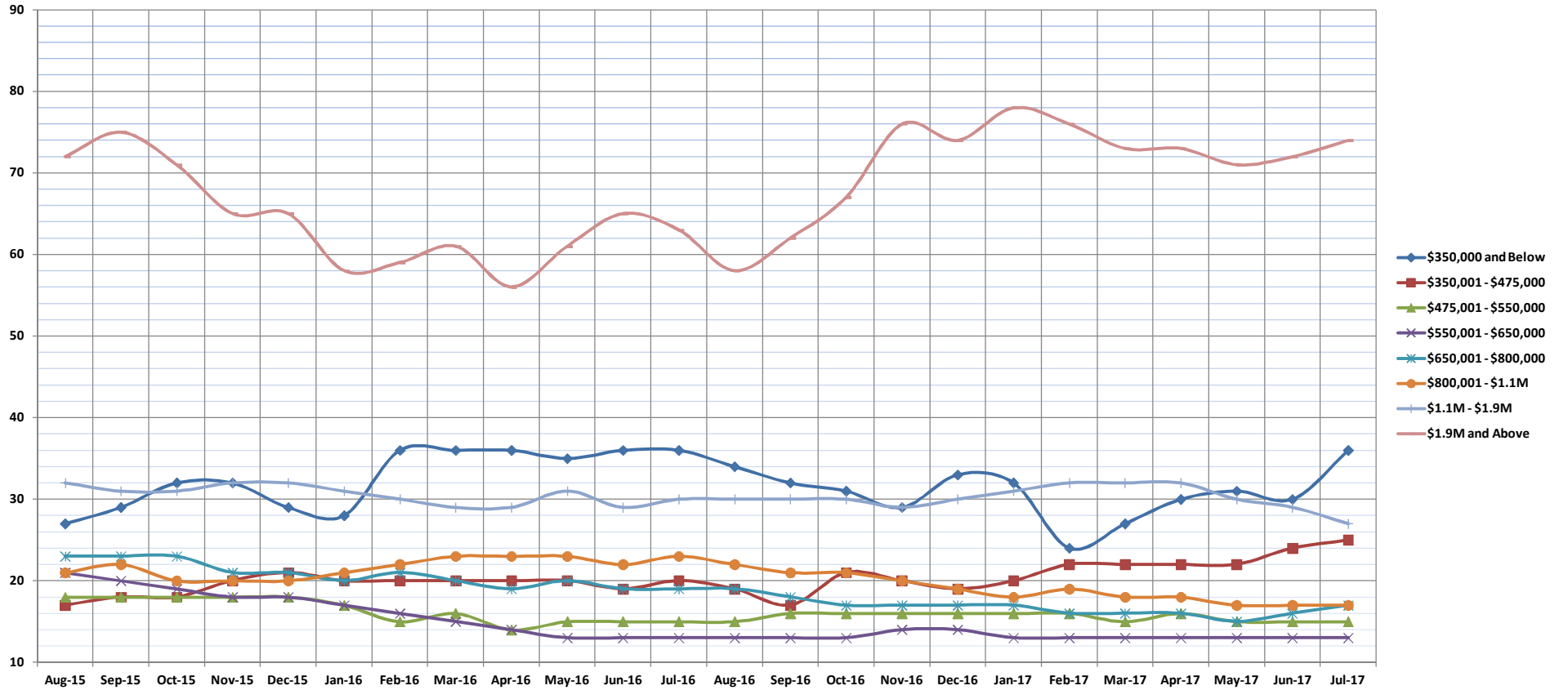
SOURCE: Honolulu Board of REALTORS®, compiled from MLS data.

Days on Market Until Sale

Jul-17

Single Family Homes: Monthly, by Price Range

(The median number of days between when a property is first listed and when an offer is accepted. Based on a 12 month rolling median.)



	Aug-15	Sep-15	Oct-15	Nov-15	Dec-15	Jan-16	Feb-16	Mar-16	Apr-16	May-16	Jun-16	Jul-16	Aug-16	Sep-16	Oct-16	Nov-16	Dec-16	Jan-17	Feb-17	Mar-17	Apr-17	May-17	Jun-17	Jul-17
\$350,000 and Below	27	29	32	32	29	28	36	36	36	35	36	36	34	32	31	29	33	32	24	27	30	31	30	36
\$350,001 - \$475,000	17	18	18	20	21	20	20	20	20	20	19	20	19	17	21	20	19	20	22	22	22	22	24	25
\$475,001 - \$550,000	18	18	18	18	18	17	15	16	14	15	15	15	15	16	16	16	16	16	16	15	16	15	15	15
\$550,001 - \$650,000	21	20	19	18	18	17	16	15	14	13	13	13	13	13	13	14	14	13	13	13	13	13	13	13
\$650,001 - \$800,000	23	23	23	21	21	20	21	20	19	20	19	19	19	18	17	17	17	17	16	16	16	15	16	17
\$800,001 - \$1.1M	21	22	20	20	20	21	22	23	23	23	22	23	22	21	21	20	19	18	19	18	18	18	17	17
\$1.1M - \$1.9M	32	31	31	32	32	31	30	29	29	31	29	30	30	30	30	29	30	31	32	32	32	30	29	27
\$1.9M and Above	72	75	71	65	65	58	59	61	56	61	65	63	58	62	67	76	74	78	76	73	73	71	72	74
All Single Family Homes	22	22	21	21	21	20	20	20	19	19	19	19	19	18	18	18	18	18	18	18	18	18	17	18

SOURCE: Honolulu Board of REALTORS®, compiled from MLS data.

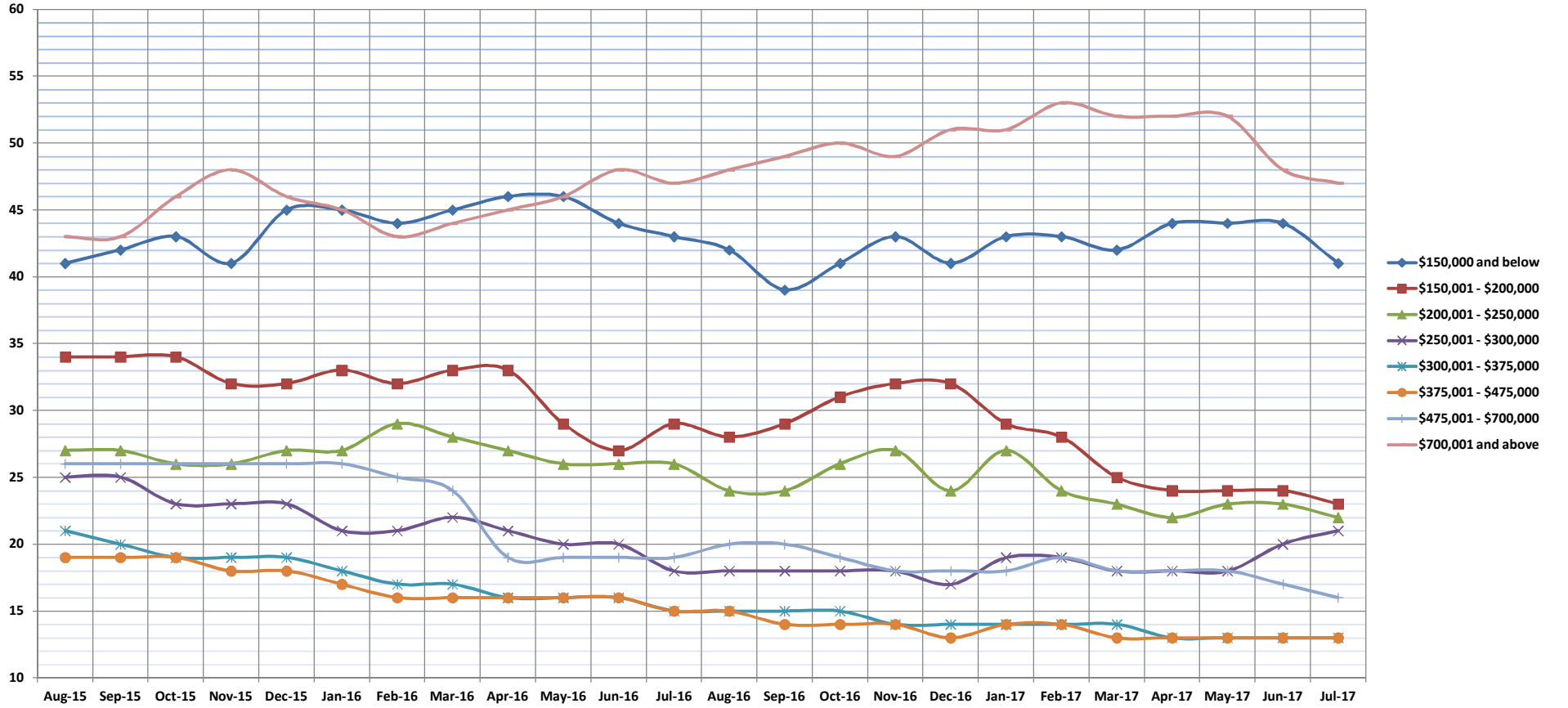


Days on Market Until Sale

Jul-17

Condos: Monthly, by Price Range

(The median number of days between when a property is first listed and when an offer is accepted. Based on a 12 month rolling median.)



	Aug-15	Sep-15	Oct-15	Nov-15	Dec-15	Jan-16	Feb-16	Mar-16	Apr-16	May-16	Jun-16	Jul-16	Aug-16	Sep-16	Oct-16	Nov-16	Dec-16	Jan-17	Feb-17	Mar-17	Apr-17	May-17	Jun-17	Jul-17
\$150,000 and below	41	42	43	41	45	45	44	45	46	46	44	43	42	39	41	43	41	43	43	42	44	44	44	41
\$150,001 - \$200,000	34	34	34	32	32	33	32	33	33	29	27	29	28	29	31	32	32	29	28	25	24	24	24	23
\$200,001 - \$250,000	27	27	26	26	27	27	29	28	27	26	26	26	24	24	26	27	24	27	24	23	22	23	23	22
\$250,001 - \$300,000	25	25	23	23	23	21	21	22	21	20	20	18	18	18	18	18	17	19	19	18	18	18	20	21
\$300,001 - \$375,000	21	20	19	19	19	18	17	17	16	16	16	15	15	15	15	14	14	14	14	14	13	13	13	13
\$375,001 - \$475,000	19	19	19	18	18	17	16	16	16	16	16	15	15	14	14	14	13	14	14	13	13	13	13	13
\$475,001 - \$700,000	26	26	26	26	26	26	25	24	19	19	19	19	20	20	19	18	18	18	19	18	18	18	17	16
\$700,001 and above	43	43	46	48	46	45	43	44	45	46	48	47	48	49	50	49	51	51	53	52	52	52	48	47
All Condos	23	23	23	23	23	22	22	21	21	21	21	20	20	20	20	20	19	20	20	19	19	19	18	18

SOURCE: Honolulu Board of REALTORS®, compiled from MLS data.

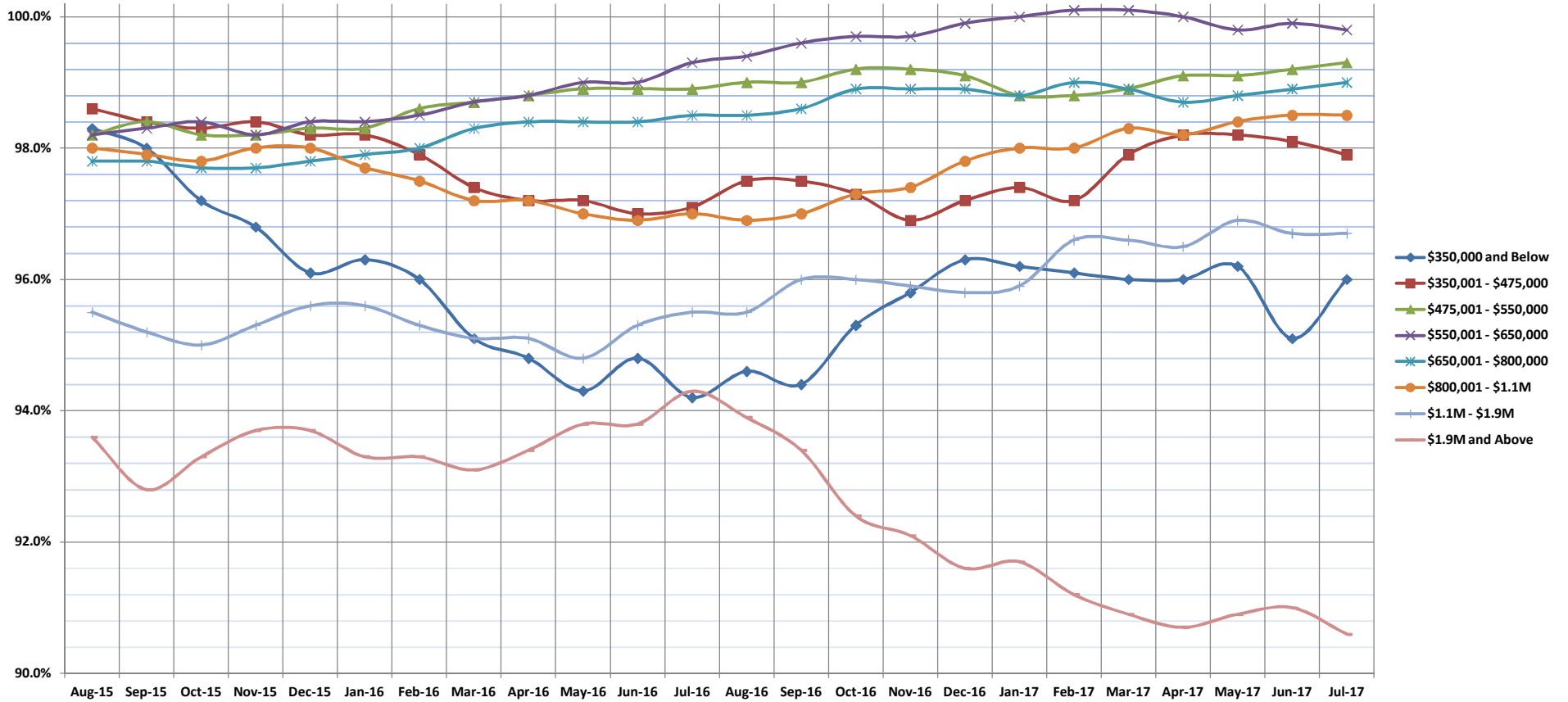


Percentage of Original Price Received

Jul-17

Single Family Homes: Monthly, by Price Range

(The average percentage found when dividing a property's sales price by the original list price. Based on a rolling 12 month average.)



	Aug-15	Sep-15	Oct-15	Nov-15	Dec-15	Jan-16	Feb-16	Mar-16	Apr-16	May-16	Jun-16	Jul-16	Aug-16	Sep-16	Oct-16	Nov-16	Dec-16	Jan-17	Feb-17	Mar-17	Apr-17	May-17	Jun-17	Jul-17
\$350,000 and Below	98.3%	98.0%	97.2%	96.8%	96.1%	96.3%	96.0%	95.1%	94.8%	94.3%	94.8%	94.2%	94.6%	94.4%	95.3%	95.8%	96.3%	96.2%	96.1%	96.0%	96.0%	96.2%	95.1%	96.0%
\$350,001 - \$475,000	98.6%	98.4%	98.3%	98.4%	98.2%	98.2%	97.9%	97.4%	97.2%	97.2%	97.0%	97.1%	97.5%	97.5%	97.3%	96.9%	97.2%	97.4%	97.2%	97.9%	98.2%	98.2%	98.1%	97.9%
\$475,001 - \$550,000	98.2%	98.4%	98.2%	98.2%	98.3%	98.3%	98.6%	98.7%	98.8%	98.9%	98.9%	98.9%	99.0%	99.0%	99.2%	99.2%	99.1%	98.8%	98.8%	98.9%	99.1%	99.1%	99.2%	99.3%
\$550,001 - \$650,000	98.2%	98.3%	98.4%	98.2%	98.4%	98.4%	98.4%	98.7%	98.8%	99.0%	99.0%	99.3%	99.4%	99.6%	99.7%	99.7%	99.9%	100.0%	100.1%	100.1%	100.0%	99.8%	99.9%	99.8%
\$650,001 - \$800,000	97.8%	97.8%	97.7%	97.7%	97.8%	97.8%	98.0%	98.3%	98.4%	98.4%	98.4%	98.5%	98.5%	98.6%	98.9%	98.9%	98.9%	98.8%	98.9%	98.9%	98.8%	98.9%	98.7%	98.8%
\$800,001 - \$1.1M	98.0%	97.9%	97.8%	98.0%	98.0%	97.7%	97.5%	97.2%	97.2%	97.0%	96.9%	97.0%	96.9%	97.0%	97.3%	97.4%	97.8%	98.0%	98.0%	98.3%	98.2%	98.4%	98.5%	98.5%
\$1.1M - \$1.9M	95.5%	95.2%	95.0%	95.3%	95.6%	95.6%	95.3%	95.1%	95.1%	94.8%	95.3%	95.5%	95.5%	96.0%	96.0%	95.9%	95.8%	95.9%	96.6%	96.6%	96.5%	96.9%	96.7%	96.7%
\$1.9M and Above	93.6%	92.8%	93.3%	93.7%	93.7%	93.3%	93.3%	93.1%	93.4%	93.8%	93.8%	94.3%	93.9%	93.4%	92.4%	92.1%	91.6%	91.7%	91.2%	90.9%	90.7%	90.9%	91.0%	90.6%
All Single Family Homes	97.7%	97.8%	97.7%	97.4%	98.1%	98.2%	98.3%	98.5%	98.6%	98.7%	98.6%	98.8%	98.8%	98.9%	99.1%	99.1%	99.1%	99.1%	99.0%	98.9%	98.7%	98.8%	98.9%	98.7%

SOURCE: Honolulu Board of REALTORS®, compiled from MLS data.

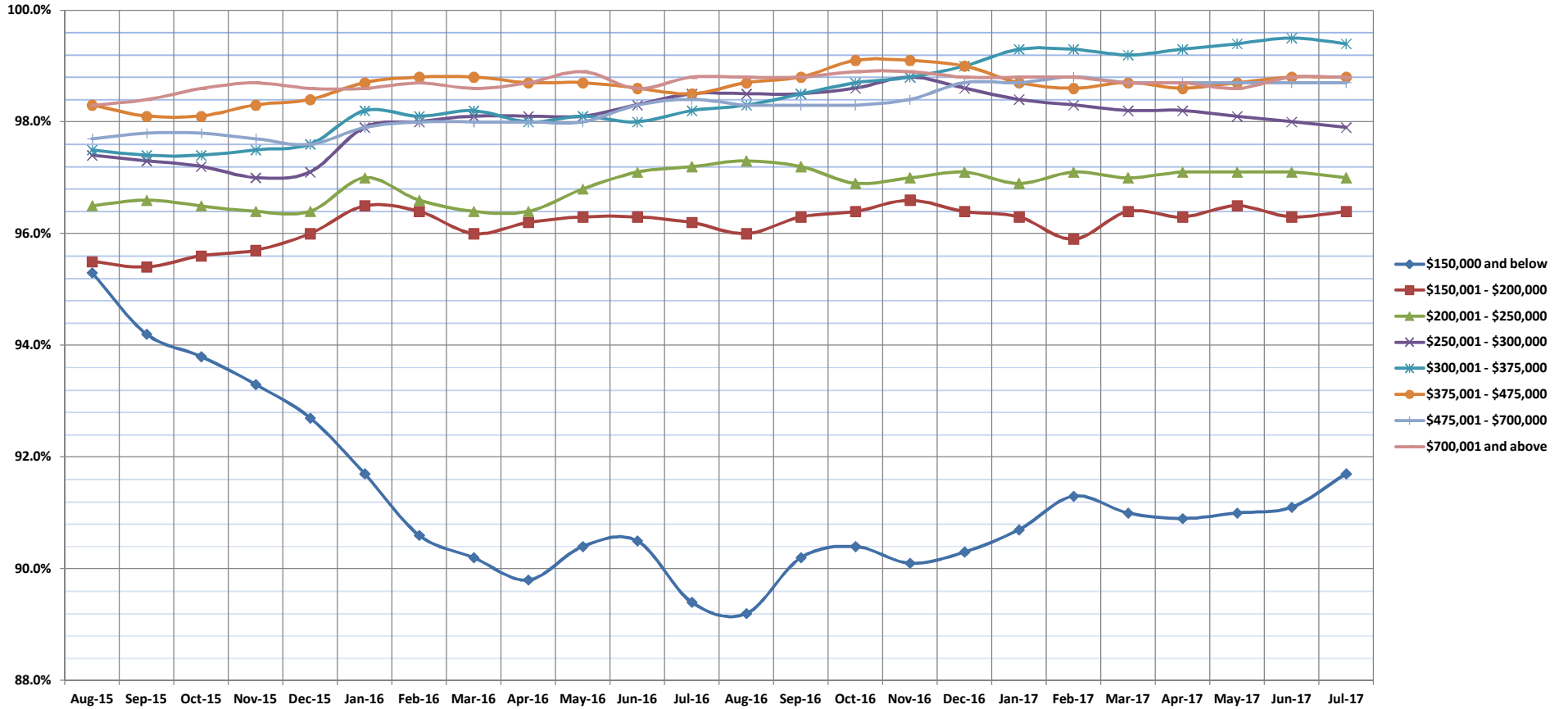


Percentage of Original Price Received

Jul-17

Condos: Monthly, by Price Range

(The average percentage found when dividing a property's sales price by the original list price. Based on a rolling 12 month average.)



	Aug-15	Sep-15	Oct-15	Nov-15	Dec-15	Jan-16	Feb-16	Mar-16	Apr-16	May-16	Jun-16	Jul-16	Aug-16	Sep-16	Oct-16	Nov-16	Dec-16	Jan-17	Feb-17	Mar-17	Apr-17	May-17	Jun-17	Jul-17
\$150,000 and below	95.3%	94.2%	93.8%	93.3%	92.7%	91.7%	90.6%	90.2%	89.8%	90.4%	90.5%	89.4%	89.2%	90.2%	90.4%	90.1%	90.3%	90.7%	91.3%	91.0%	90.9%	91.0%	91.1%	91.7%
\$150,001 - \$200,000	95.5%	95.4%	95.6%	95.7%	96.0%	96.5%	96.4%	96.0%	96.2%	96.3%	96.3%	96.2%	96.0%	96.3%	96.4%	96.6%	96.4%	96.3%	95.9%	96.4%	96.3%	96.5%	96.3%	96.4%
\$200,001 - \$250,000	96.5%	96.6%	96.5%	96.4%	96.4%	97.0%	96.6%	96.4%	96.4%	96.8%	97.1%	97.2%	97.3%	97.2%	96.9%	97.0%	97.1%	96.9%	97.1%	97.0%	97.1%	97.1%	97.1%	97.0%
\$250,001 - \$300,000	97.4%	97.3%	97.2%	97.0%	97.1%	97.9%	98.0%	98.1%	98.1%	98.1%	98.3%	98.5%	98.5%	98.5%	98.6%	98.8%	98.6%	98.4%	98.3%	98.2%	98.2%	98.1%	98.0%	97.9%
\$300,001 - \$375,000	97.5%	97.4%	97.4%	97.5%	97.6%	98.2%	98.1%	98.1%	98.0%	98.1%	98.0%	98.1%	98.0%	98.2%	98.3%	98.5%	98.7%	98.8%	99.0%	99.3%	99.3%	99.2%	99.3%	99.4%
\$375,001 - \$475,000	98.3%	98.1%	98.1%	98.3%	98.4%	98.7%	98.8%	98.8%	98.7%	98.7%	98.6%	98.5%	98.7%	98.8%	99.1%	99.1%	99.0%	98.7%	98.6%	98.7%	98.6%	98.7%	98.6%	98.7%
\$475,001 - \$700,000	97.7%	97.8%	97.8%	97.7%	97.6%	97.9%	98.0%	98.0%	98.0%	98.0%	98.3%	98.4%	98.3%	98.3%	98.3%	98.4%	98.7%	98.7%	98.8%	98.7%	98.8%	98.7%	98.7%	98.7%
\$700,001 and above	96.3%	96.4%	96.4%	96.5%	96.8%	96.4%	96.0%	95.2%	95.1%	95.3%	95.1%	94.9%	94.9%	94.9%	94.8%	94.5%	94.0%	94.4%	94.6%	95.5%	95.7%	95.4%	95.7%	95.8%
All Condos	98.3%	98.4%	98.6%	98.7%	98.6%	98.6%	98.7%	98.6%	98.7%	98.9%	98.6%	98.8%	98.8%	98.8%	98.9%	98.9%	98.8%	98.8%	98.8%	98.7%	98.7%	98.6%	98.8%	98.8%

SOURCE: Honolulu Board of REALTORS®, compiled from MLS data.

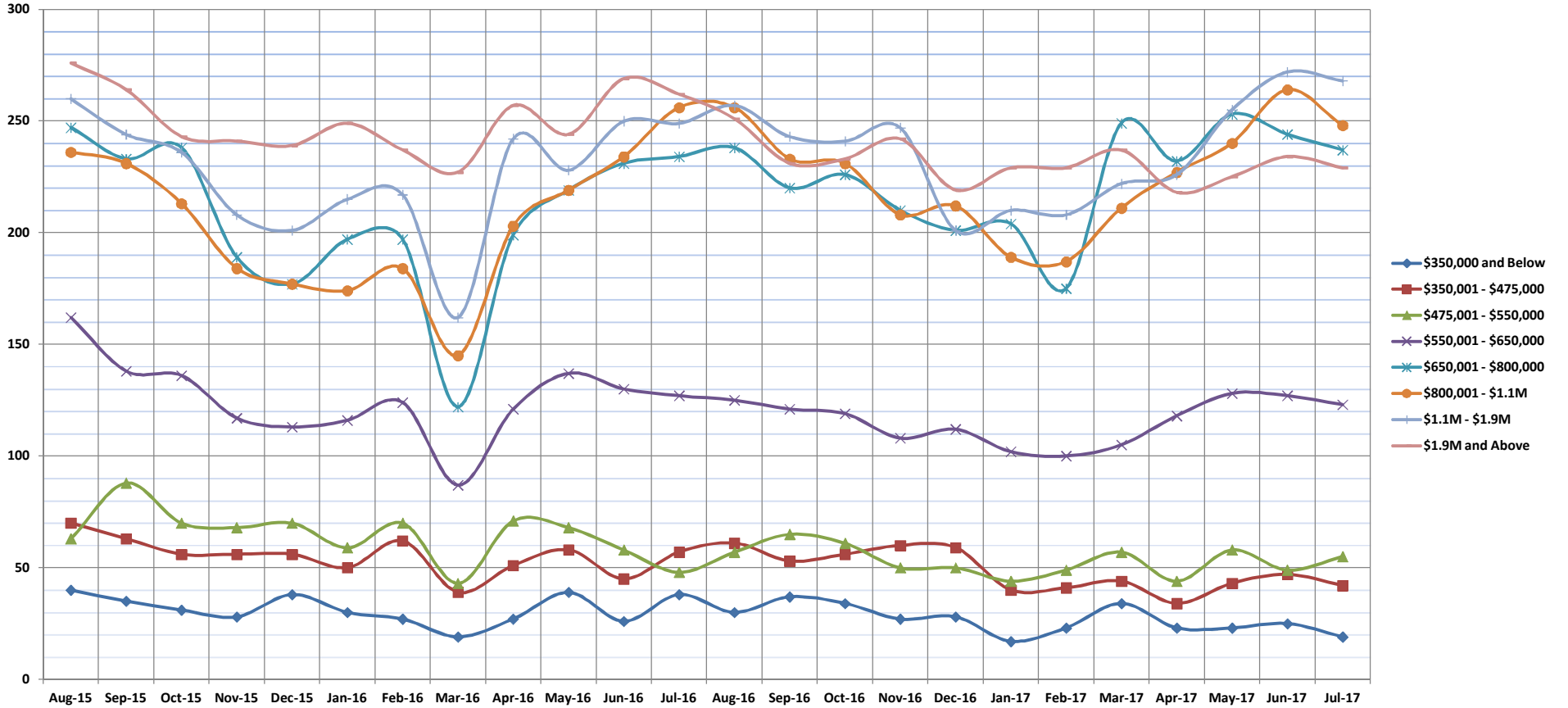


Inventory of Homes for Sale

Jul-17

Single Family Homes: Monthly, by Price Range

(The number of properties available for sale in active status at the end of a given month.)



	Aug-15	Sep-15	Oct-15	Nov-15	Dec-15	Jan-16	Feb-16	Mar-16	Apr-16	May-16	Jun-16	Jul-16	Aug-16	Sep-16	Oct-16	Nov-16	Dec-16	Jan-17	Feb-17	Mar-17	Apr-17	May-17	Jun-17	Jul-17
\$350,000 and Below	40	35	31	28	38	30	27	19	27	39	26	38	30	37	34	27	28	17	23	34	23	23	25	19
\$350,001 - \$475,000	70	63	56	56	56	50	62	39	51	58	45	57	61	53	56	60	59	40	41	44	34	43	47	42
\$475,001 - \$550,000	63	88	70	68	70	59	70	43	71	68	58	48	57	65	61	50	50	44	49	57	44	58	49	55
\$550,001 - \$650,000	162	138	136	117	113	116	124	87	121	137	130	127	125	121	119	108	112	102	100	105	118	128	127	123
\$650,001 - \$800,000	247	233	238	189	177	197	197	122	199	219	231	234	238	220	226	210	201	204	175	249	232	253	244	237
\$800,001 - \$1.1M	236	231	213	184	177	174	184	145	203	219	234	256	256	233	231	208	212	189	187	211	227	240	264	248
\$1.1M - \$1.9M	260	244	236	208	201	215	217	162	242	228	250	249	257	243	241	247	201	210	208	222	226	255	272	268
\$1.9M and Above	276	264	243	241	239	249	237	227	257	244	269	262	251	231	233	242	219	229	229	237	218	225	234	229
All Single Family Homes	1354	1296	1223	1091	1071	1090	1118	844	1171	1212	1243	1271	1275	1203	1201	1152	1082	1035	1012	1159	1112	1225	1262	1221

SOURCE: Honolulu Board of REALTORS®, compiled from MLS data.

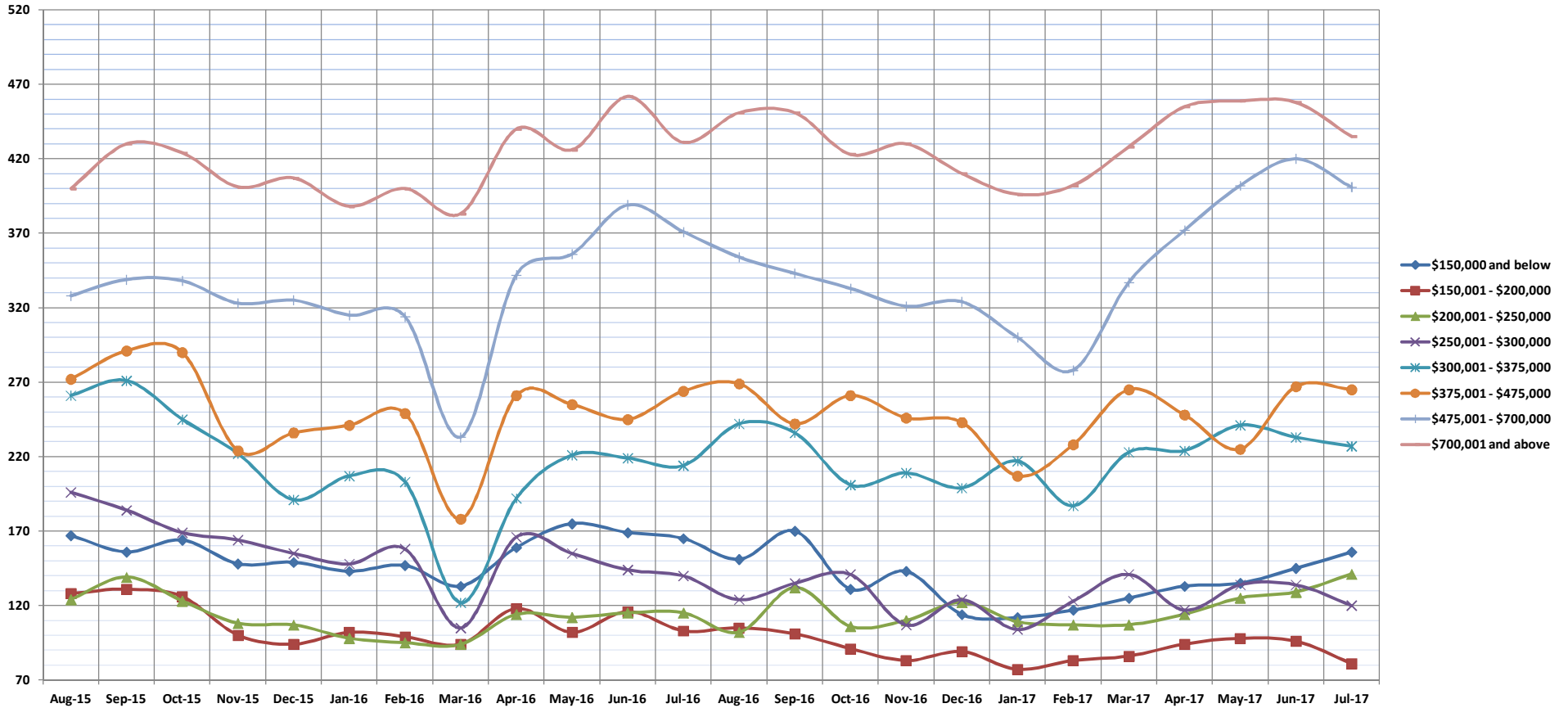


Inventory of Homes for Sale

Jul-17

Condos: Monthly, by Price Range

(The number of properties available for sale in active status at the end of a given month.)



	Aug-15	Sep-15	Oct-15	Nov-15	Dec-15	Jan-16	Feb-16	Mar-16	Apr-16	May-16	Jun-16	Jul-16	Aug-16	Sep-16	Oct-16	Nov-16	Dec-16	Jan-17	Feb-17	Mar-17	Apr-17	May-17	Jun-17	Jul-17
\$150,000 and below	167	156	164	148	149	143	147	133	159	175	169	165	151	170	131	143	114	112	117	125	133	135	145	156
\$150,001 - \$200,000	128	131	126	100	94	102	99	94	118	102	116	103	105	101	91	83	89	77	83	86	94	98	96	81
\$200,001 - \$250,000	124	139	123	108	107	98	95	94	114	112	115	115	102	132	106	110	122	109	107	107	114	125	129	141
\$250,001 - \$300,000	196	184	169	164	155	148	158	105	166	155	144	140	124	135	141	107	124	104	123	141	117	134	134	120
\$300,001 - \$375,000	261	271	245	222	191	207	203	122	192	221	219	214	242	236	201	209	199	217	187	223	224	241	233	227
\$375,001 - \$475,000	272	291	290	224	236	241	249	178	261	255	245	264	269	242	261	246	243	207	228	265	248	225	267	265
\$475,001 - \$700,000	328	339	338	323	325	315	314	233	342	356	389	371	354	343	333	321	324	300	278	337	372	402	420	401
\$700,001 and above	400	430	424	401	407	388	400	383	440	426	462	431	451	451	423	430	410	396	402	428	455	459	458	435
All Condos	1876	1941	1879	1690	1664	1642	1665	1342	1792	1802	1859	1803	1798	1810	1687	1649	1625	1522	1525	1712	1757	1849	1882	1826

SOURCE: Honolulu Board of REALTORS®, compiled from MLS data.

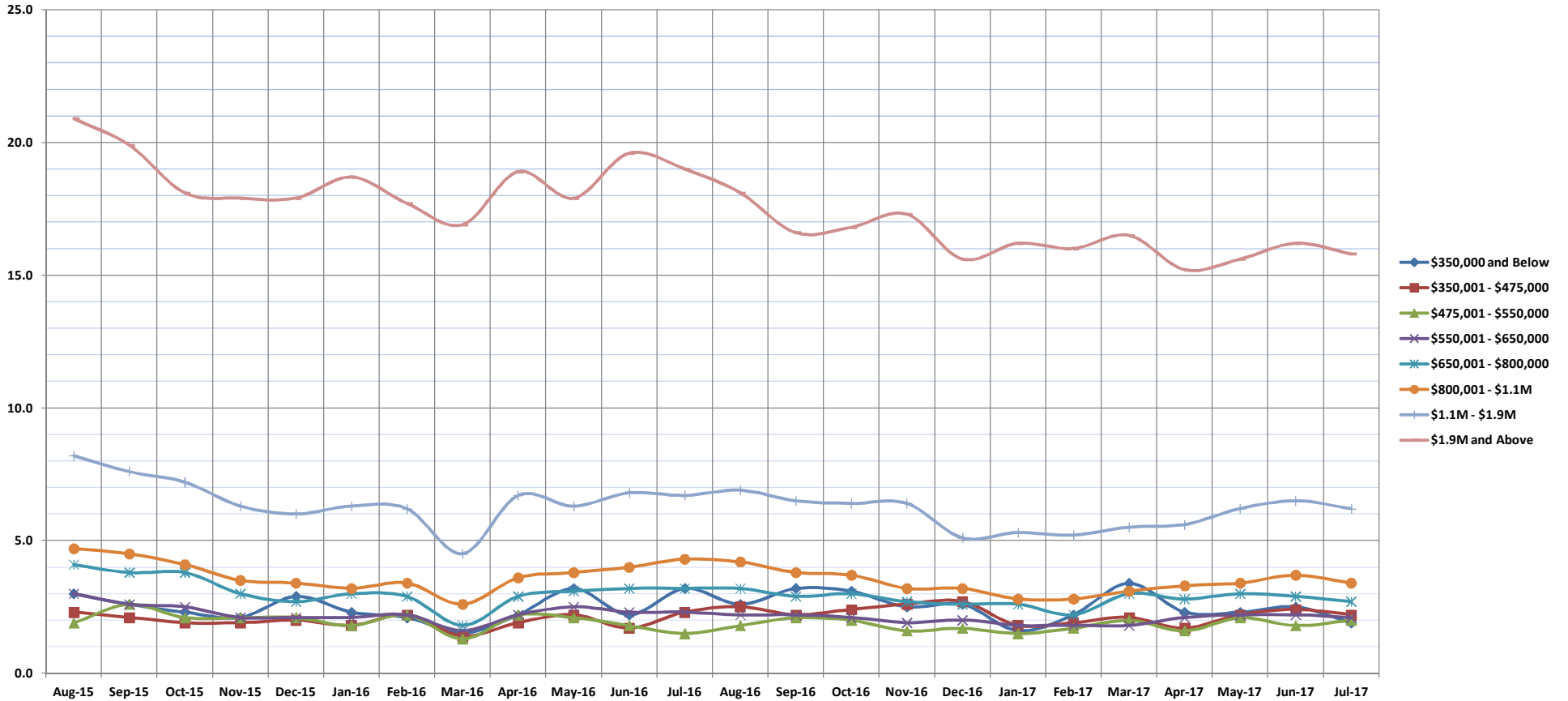


Months Supply of Inventory

Jul-17

Single Family Homes: Monthly, by Price Range

(Compares the number of active listings available to the average monthly pending sales from the last 12 months.)



	Aug-15	Sep-15	Oct-15	Nov-15	Dec-15	Jan-16	Feb-16	Mar-16	Apr-16	May-16	Jun-16	Jul-16	Aug-16	Sep-16	Oct-16	Nov-16	Dec-16	Jan-17	Feb-17	Mar-17	Apr-17	May-17	Jun-17	Jul-17
\$350,000 and Below	3.0	2.6	2.3	2.1	2.9	2.3	2.1	1.5	2.2	3.2	2.2	3.2	2.6	3.2	3.1	2.5	2.6	1.6	2.2	3.4	2.3	2.3	2.5	1.9
\$350,001 - \$475,000	2.3	2.1	1.9	1.9	2.0	1.8	2.2	1.4	1.9	2.2	1.7	2.3	2.5	2.2	2.4	2.6	2.7	1.8	1.9	2.1	1.7	2.2	2.4	2.2
\$475,001 - \$550,000	1.9	2.6	2.1	2.1	2.1	1.8	2.2	1.3	2.2	2.1	1.8	1.5	1.8	2.1	2.0	1.6	1.7	1.5	1.7	2.0	1.6	2.1	1.8	2.0
\$550,001 - \$650,000	3.0	2.6	2.5	2.1	2.1	2.1	2.2	1.6	2.2	2.5	2.3	2.2	2.2	2.2	2.1	1.9	2.0	1.8	1.8	1.8	2.1	2.2	2.2	2.1
\$650,001 - \$800,000	4.1	3.8	3.8	3.0	2.7	3.0	2.9	1.8	2.9	3.1	3.2	3.2	3.2	2.9	3.0	2.7	2.6	2.6	2.2	3.0	2.8	3.0	2.9	2.7
\$800,001 - \$1.1M	4.7	4.5	4.1	3.5	3.4	3.2	3.4	2.6	3.6	3.8	4.0	4.3	4.2	3.8	3.7	3.2	3.2	2.8	2.8	3.1	3.3	3.4	3.7	3.4
\$1.1M - \$1.9M	8.2	7.6	7.2	6.3	6.0	6.3	6.2	4.5	6.7	6.3	6.8	6.7	6.9	6.5	6.4	6.4	5.1	5.3	5.2	5.5	5.6	6.2	6.5	6.2
\$1.9M and Above	20.9	19.9	18.1	17.9	17.9	18.7	17.7	16.9	18.9	17.9	19.6	19.0	18.1	16.6	16.8	17.3	15.6	16.2	16.0	16.5	15.2	15.6	16.2	15.8
All Single Family Homes	4.7	4.5	4.2	3.7	3.7	3.7	3.7	2.8	3.9	4.0	4.0	4.1	4.1	3.9	3.9	3.6	3.4	3.3	3.2	3.6	3.5	3.8	3.9	3.7

SOURCE: Honolulu Board of REALTORS®, compiled from MLS data.

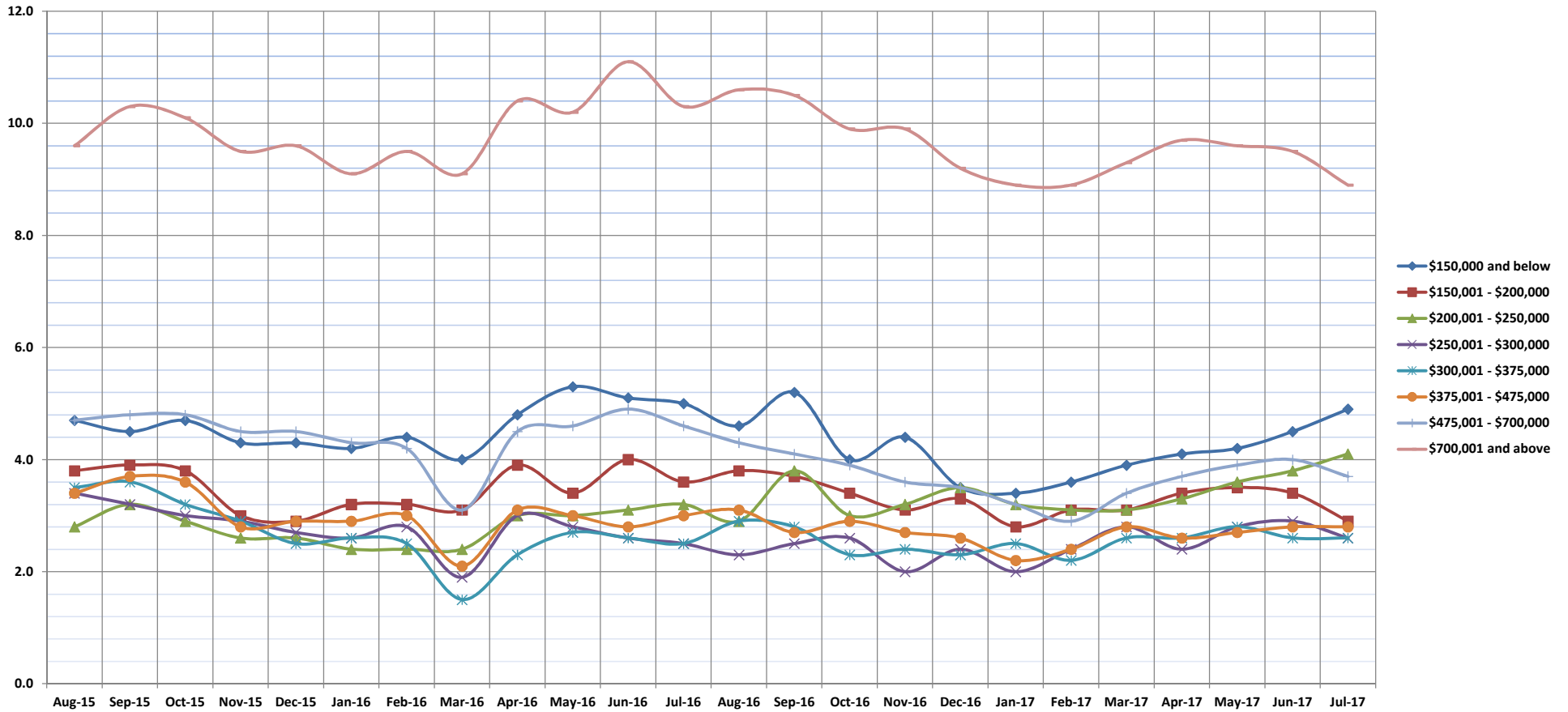


Months Supply of Inventory

Jul-17

Condos: Monthly, by Price Range

(Compares the number of active listings available to the average monthly pending sales from the last 12 months.)



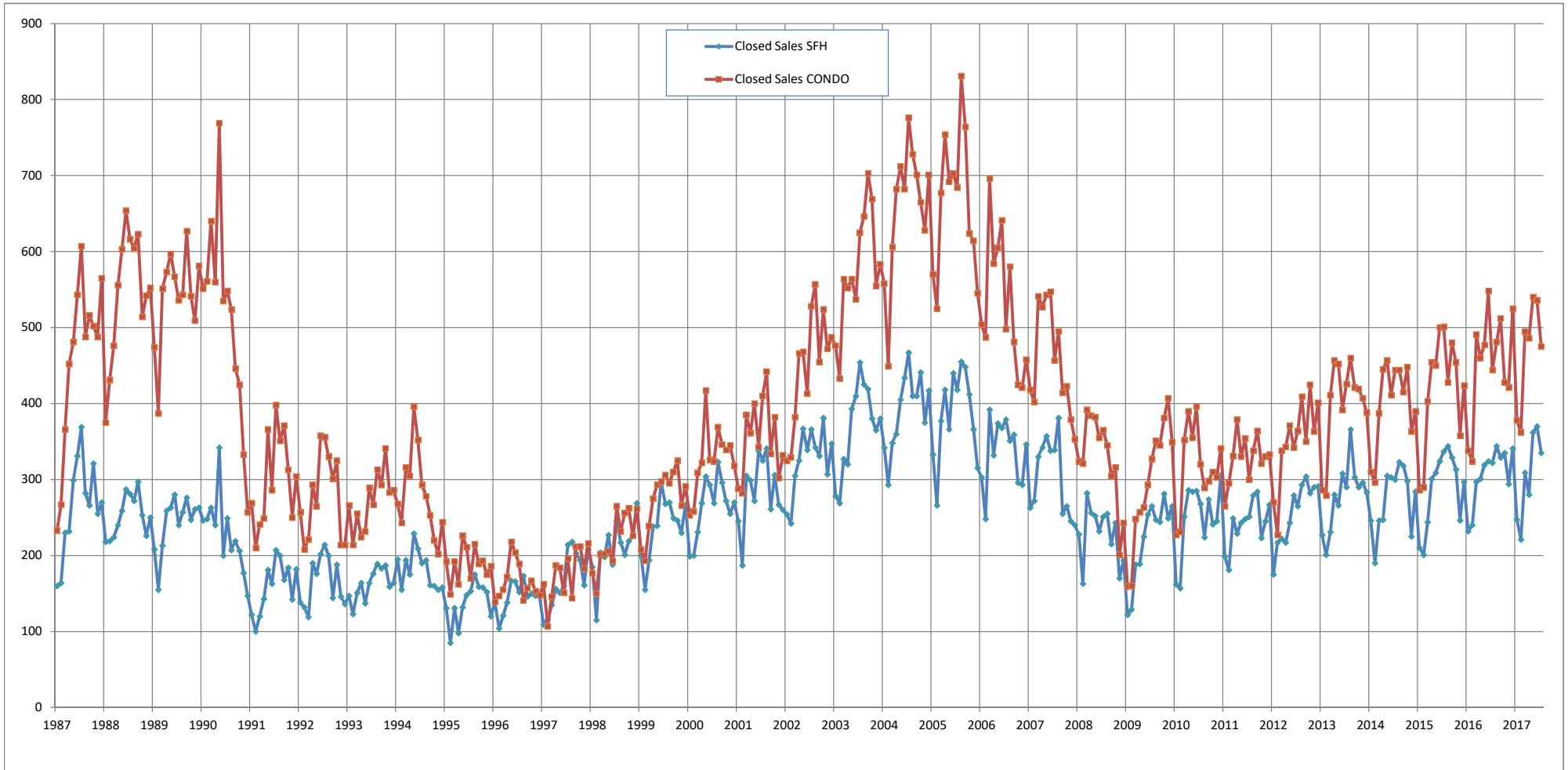
	Aug-15	Sep-15	Oct-15	Nov-15	Dec-15	Jan-16	Feb-16	Mar-16	Apr-16	May-16	Jun-16	Jul-16	Aug-16	Sep-16	Oct-16	Nov-16	Dec-16	Jan-17	Feb-17	Mar-17	Apr-17	May-17	Jun-17	Jul-17
\$150,000 and below	4.7	4.5	4.7	4.3	4.3	4.2	4.4	4.0	4.8	5.3	5.1	5.0	4.6	5.2	4.0	4.4	3.5	3.4	3.6	3.9	4.1	4.2	4.5	4.9
\$150,001 - \$200,000	3.8	3.9	3.8	3.0	2.9	3.2	3.2	3.1	3.9	3.4	4.0	3.6	3.8	3.7	3.4	3.1	3.3	2.8	3.1	3.1	3.4	3.5	3.4	2.9
\$200,001 - \$250,000	2.8	3.2	2.9	2.6	2.6	2.4	2.4	2.4	3.0	3.0	3.1	3.2	2.9	3.8	3.0	3.2	3.5	3.2	3.1	3.1	3.3	3.6	3.8	4.1
\$250,001 - \$300,000	3.4	3.2	3.0	2.9	2.7	2.6	2.8	1.9	3.0	2.8	2.6	2.5	2.3	2.5	2.6	2.0	2.4	2.0	2.4	2.8	2.4	2.8	2.9	2.6
\$300,001 - \$375,000	3.5	3.6	3.2	2.9	2.5	2.6	2.5	1.5	2.3	2.7	2.6	2.5	2.9	2.8	2.3	2.4	2.3	2.5	2.2	2.6	2.6	2.8	2.6	2.6
\$375,001 - \$475,000	3.4	3.7	3.6	2.8	2.9	2.9	3.0	2.1	3.1	3.0	2.8	3.0	3.1	2.7	2.9	2.7	2.6	2.2	2.4	2.8	2.6	2.7	2.8	2.8
\$475,001 - \$700,000	4.7	4.8	4.8	4.5	4.5	4.3	4.2	3.1	4.5	4.6	4.9	4.6	4.3	4.1	3.9	3.6	3.5	3.2	2.9	3.4	3.7	3.9	4.0	3.7
\$700,001 and above	9.6	10.3	10.1	9.5	9.6	9.1	9.5	9.1	10.4	10.2	11.1	10.3	10.6	10.5	9.9	9.9	9.2	8.9	8.9	9.3	9.7	9.6	9.5	8.9
All Condos	4.2	4.4	4.2	3.8	3.7	3.7	3.8	3.0	4.0	4.1	4.2	4.0	4.0	4.0	3.7	3.6	3.5	3.3	3.3	3.7	3.7	3.9	3.9	3.8

SOURCE: Honolulu Board of REALTORS®, compiled from MLS data.

Closed Sales

Single Family Homes and Condos

OAHU, HAWAII: Jan 1987 to the Present

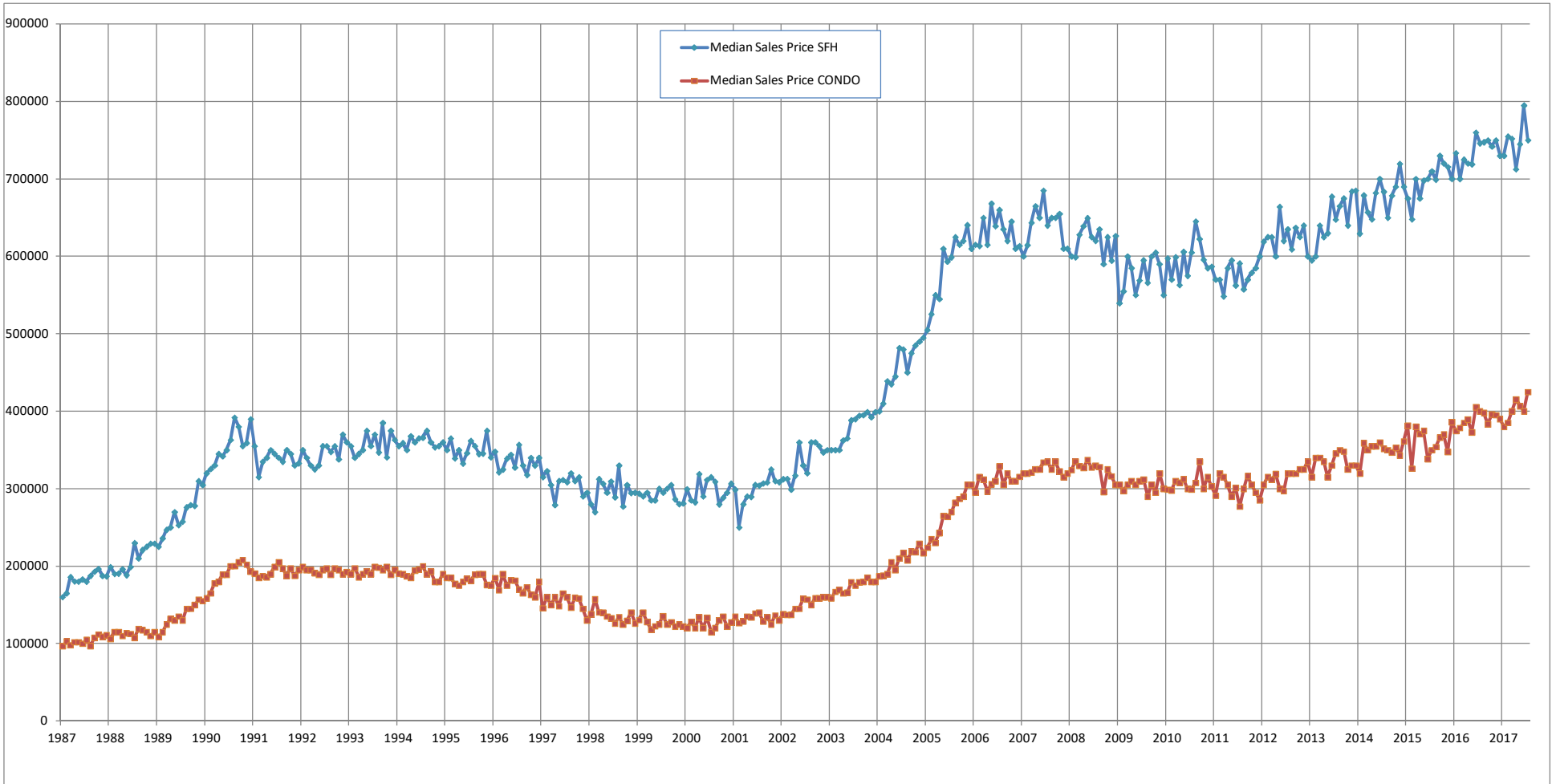


SOURCE: Honolulu Board of REALTORS® , compiled from MLS data.

Median Sales Price

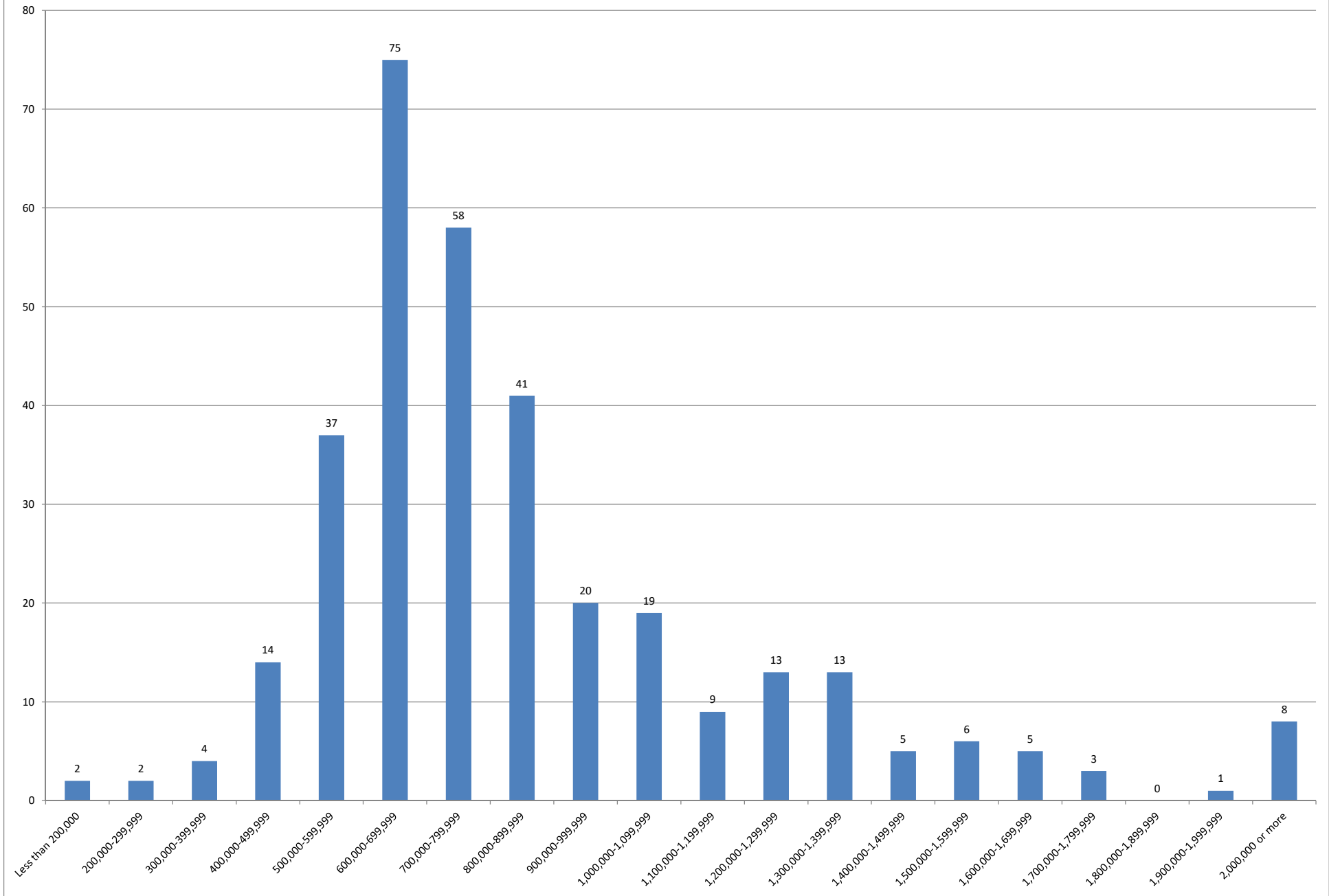
Single Family Homes and Condos

OAHU, HAWAII: Jan 1987 to the Present



SOURCE: Honolulu Board of REALTORS®, compiled from MLS data.

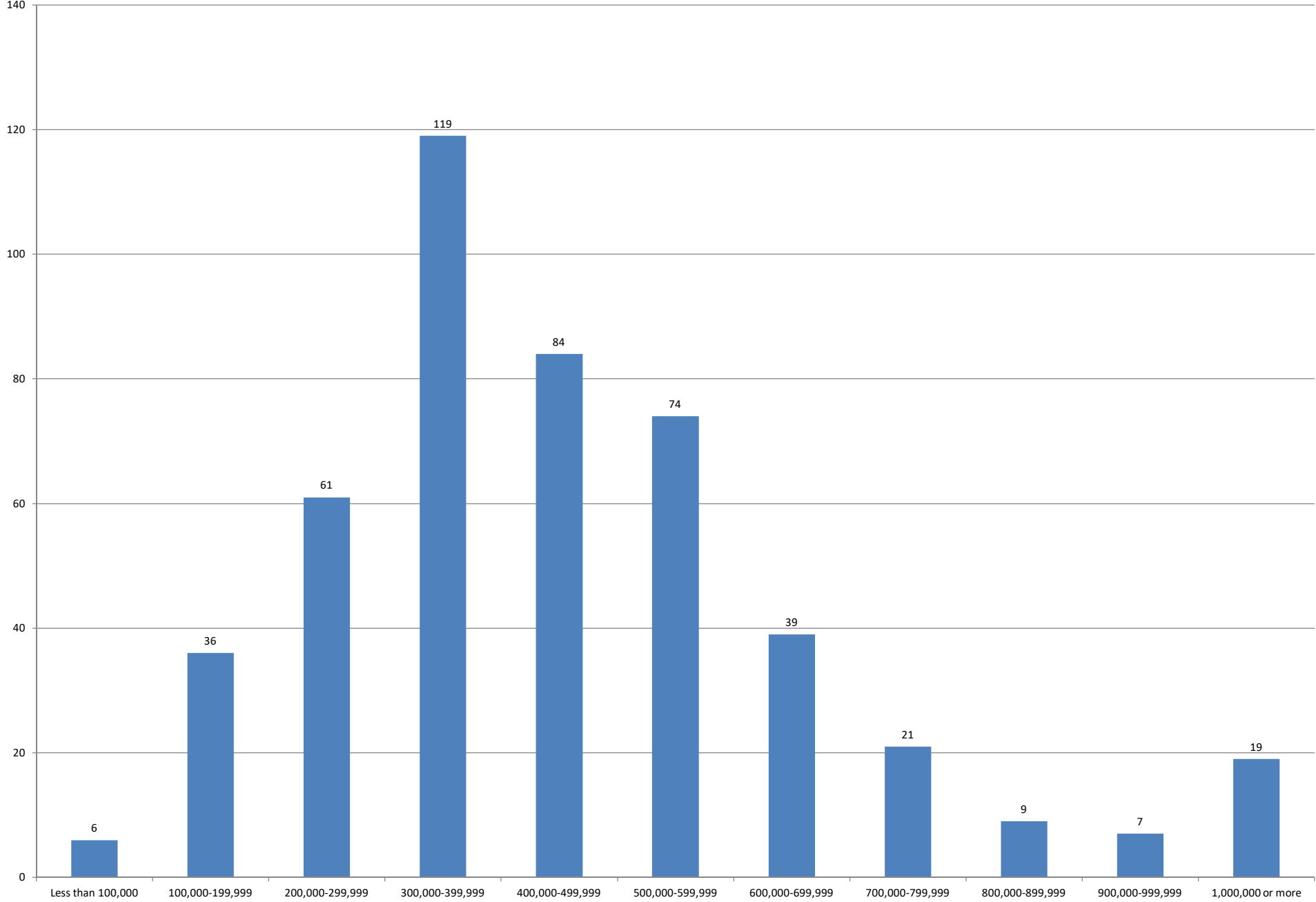
July 2017 Single Family Homes Sold



SOURCE: Honolulu Board of REALTORS®, compiled from MLS data.



July 2017 Condos Sold



SOURCE: Honolulu Board of REALTORS®, compiled from MLS data.

