

Monthly Housing Statistics

January 2018



SINGLE FAMILY HOMES

| Median Sales Price | |
|---------------------|-------|
| \$772,000 | +5.8% |
| Closed Sales | |
| 252 | +2.0% |
| Average Sales Price | |
| \$938,831 | +4.4% |

CONDOS

| Median Sales Price | |
|---------------------|--------|
| \$430,000 | +13.2% |
| Closed Sales | |
| 374 | -1.1% |
| Average Sales Price | |
| \$490,461 | +7.7% |

INDEX:

| | |
|---|------------------|
| Monthly Indicators | 2 |
| Closed Sales | 3 |
| Median Sales Price | 4 |
| Median Days on Market | 5 |
| New Listings | 6 |
| Pending Sales | 7 |
| Months of Inventory | 8 |
| Active Listings | 9 |
| Average Sales Price | 10 |
| % of Original Listing Price Received | 11 |
| Active Continue to Show | 12 |
| Housing Supply Overview | 13 |
| Pending Sales (by price range) | 14-15 |
| Median Days on Market (by price range) | 16-17 |
| % of list price received (by price range) | 18-19 |
| Inventory of Homes (by price range) | 20-21 |
| Months Supply of Inventory (price range) | 22-23 |
| Historical Graphs | 24-25 |
| Price Graphs | 26-27 |

Monthly Indicators

January 2018

| | Single Family Homes | | | | | |
|---|---------------------|-----------|--------|-----------|-----------|-------|
| | Jan-18 | Jan-17 | % | YTD-18 | YTD-17 | % |
| Closed Sales | 252 | 247 | 2.0% | 252 | 247 | 2.0% |
| Median Sales Price | \$772,000 | \$730,000 | 5.8% | \$772,000 | \$730,000 | 5.8% |
| Median Days on Market | 21 | 21 | 0.0% | 21 | 21 | 0.0% |
| New Listings | 426 | 446 | -4.5% | 426 | 446 | -4.5% |
| Pending Sales | 404 | 430 | -6.0% | 404 | 430 | -6.0% |
| Months of Inventory | 1.9 | 2.4 | -20.8% | -- | -- | -- |
| Active Listings | 1,003 | 1,035 | -3.1% | -- | -- | -- |
| Average Sales Price | \$938,831 | \$899,593 | 4.4% | \$938,831 | \$899,593 | 4.4% |
| % of Original Listing Price Received | 98.3% | 97.5% | 0.8% | 98.3% | 97.5% | 0.8% |

| | Condos | | | | | |
|---|-----------|-----------|--------|-----------|-----------|--------|
| | Jan-18 | Jan-17 | % | YTD-18 | YTD-17 | % |
| Closed Sales | 374 | 378 | -1.1% | 374 | 378 | -1.1% |
| Median Sales Price | \$430,000 | \$380,000 | 13.2% | \$430,000 | \$380,000 | 13.2% |
| Median Days on Market | 19 | 26 | -26.9% | 19 | 26 | -26.9% |
| New Listings | 730 | 641 | 13.9% | 730 | 641 | 13.9% |
| Pending Sales | 565 | 619 | -8.7% | 565 | 619 | -8.7% |
| Months of Inventory | 2.4 | 2.4 | 0.0% | -- | -- | -- |
| Active Listings | 1,699 | 1,522 | 11.6% | -- | -- | -- |
| Average Sales Price | \$490,461 | \$455,595 | 7.7% | \$490,461 | \$455,595 | 7.7% |
| % of Original Listing Price Received | 98.1% | 98.0% | 0.1% | 98.1% | 98.0% | 0.1% |

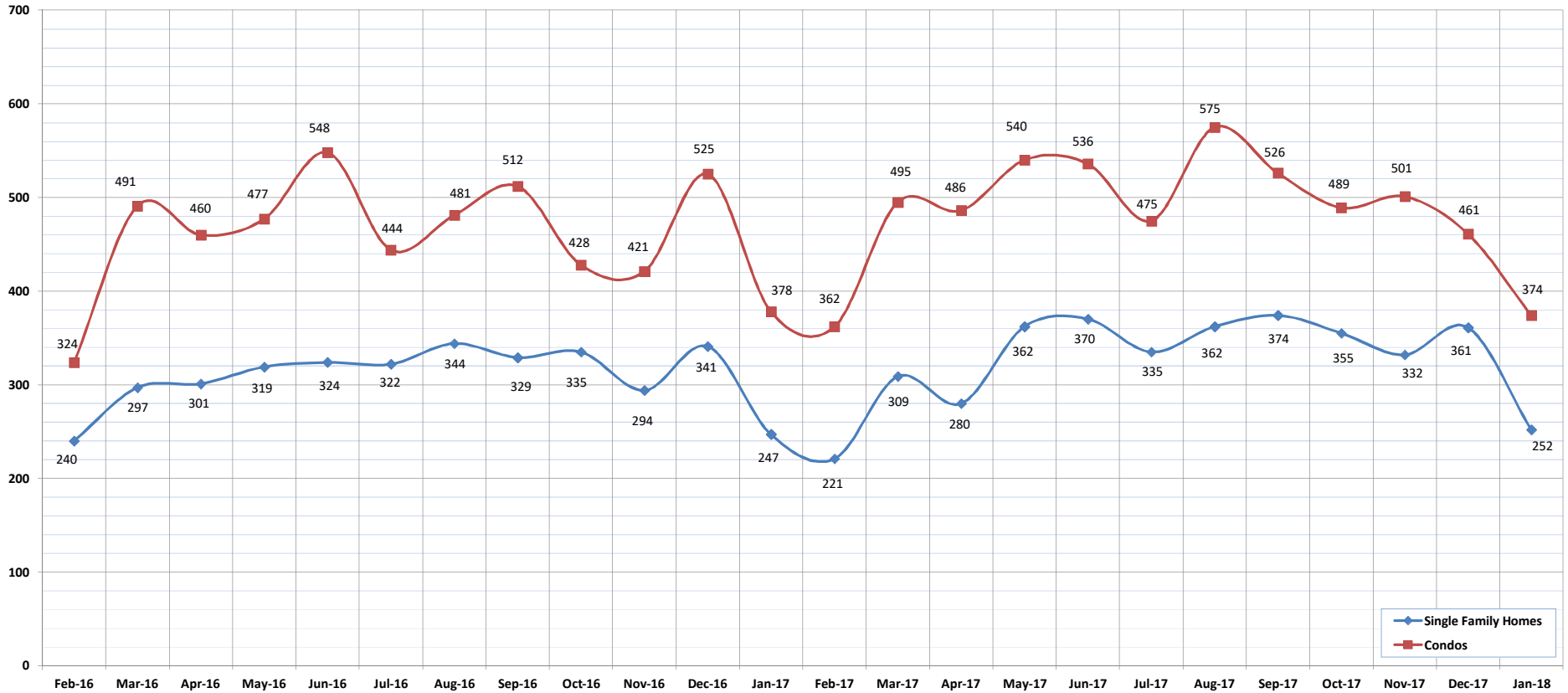
SOURCE: Honolulu Board of REALTORS®, compiled from MLS data.

Closed Sales

January-18

OAHU, HAWAII

(A count of all properties that have closed in a given month.)



| | Feb-16 | Mar-16 | Apr-16 | May-16 | Jun-16 | Jul-16 | Aug-16 | Sep-16 | Oct-16 | Nov-16 | Dec-16 | Jan-17 | Feb-17 | Mar-17 | Apr-17 | May-17 | Jun-17 | Jul-17 | Aug-17 | Sep-17 | Oct-17 | Nov-17 | Dec-17 | Jan-18 |
|--|--------|--------|--------|--------|--------|--------|--------|--------|--------|--------|--------|--------|--------|--------|--------|--------|--------|--------|--------|--------|--------|--------|--------|--------|
| Closed Sales: Single Family Homes | 240 | 297 | 301 | 319 | 324 | 322 | 344 | 329 | 335 | 294 | 341 | 247 | 221 | 309 | 280 | 362 | 370 | 335 | 362 | 374 | 355 | 332 | 361 | 252 |
| Closed Sales: Condos | 324 | 491 | 460 | 477 | 548 | 444 | 481 | 512 | 428 | 421 | 525 | 378 | 362 | 495 | 486 | 540 | 536 | 475 | 575 | 526 | 489 | 501 | 461 | 374 |
| Closed Sales: Total | 564 | 788 | 761 | 796 | 872 | 766 | 825 | 841 | 763 | 715 | 866 | 625 | 583 | 804 | 766 | 902 | 906 | 810 | 937 | 900 | 844 | 833 | 822 | 626 |

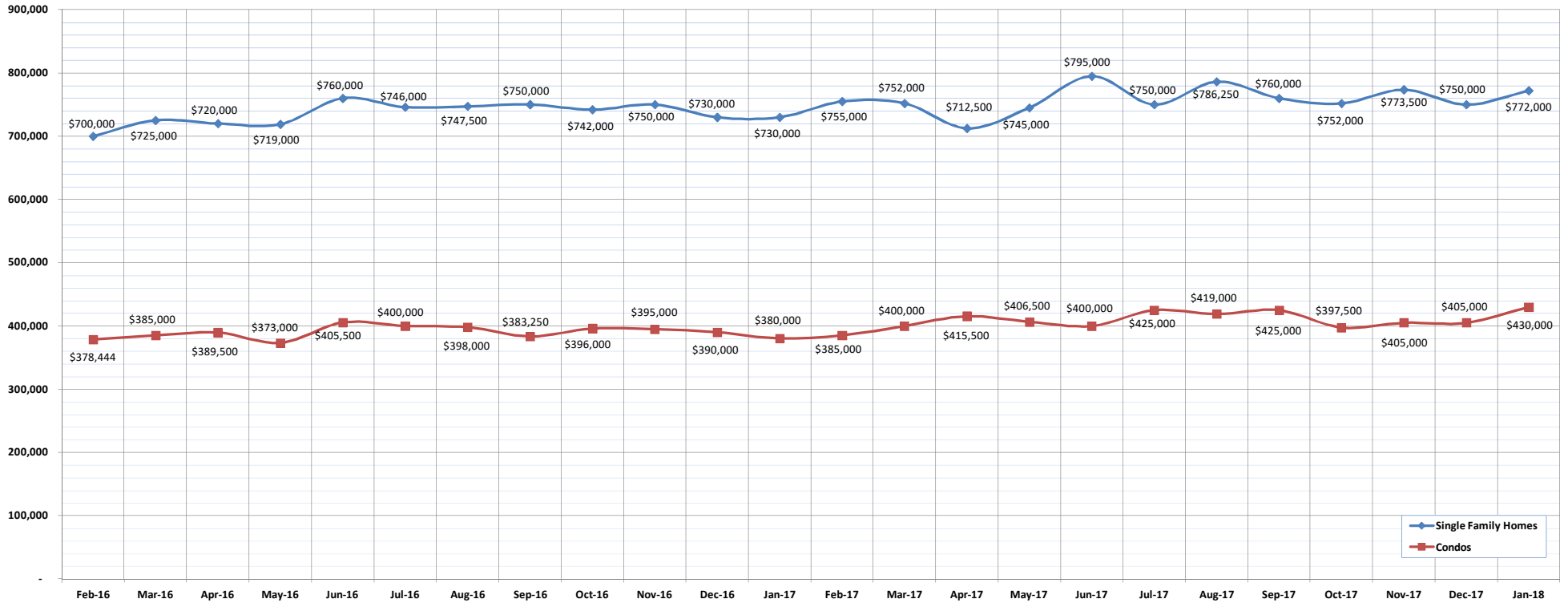
SOURCE: Honolulu Board of REALTORS®, compiled from MLS data.

Median Sales Price

January-18

OAHU, HAWAII

(The median sales price for all closed properties in a given month.)



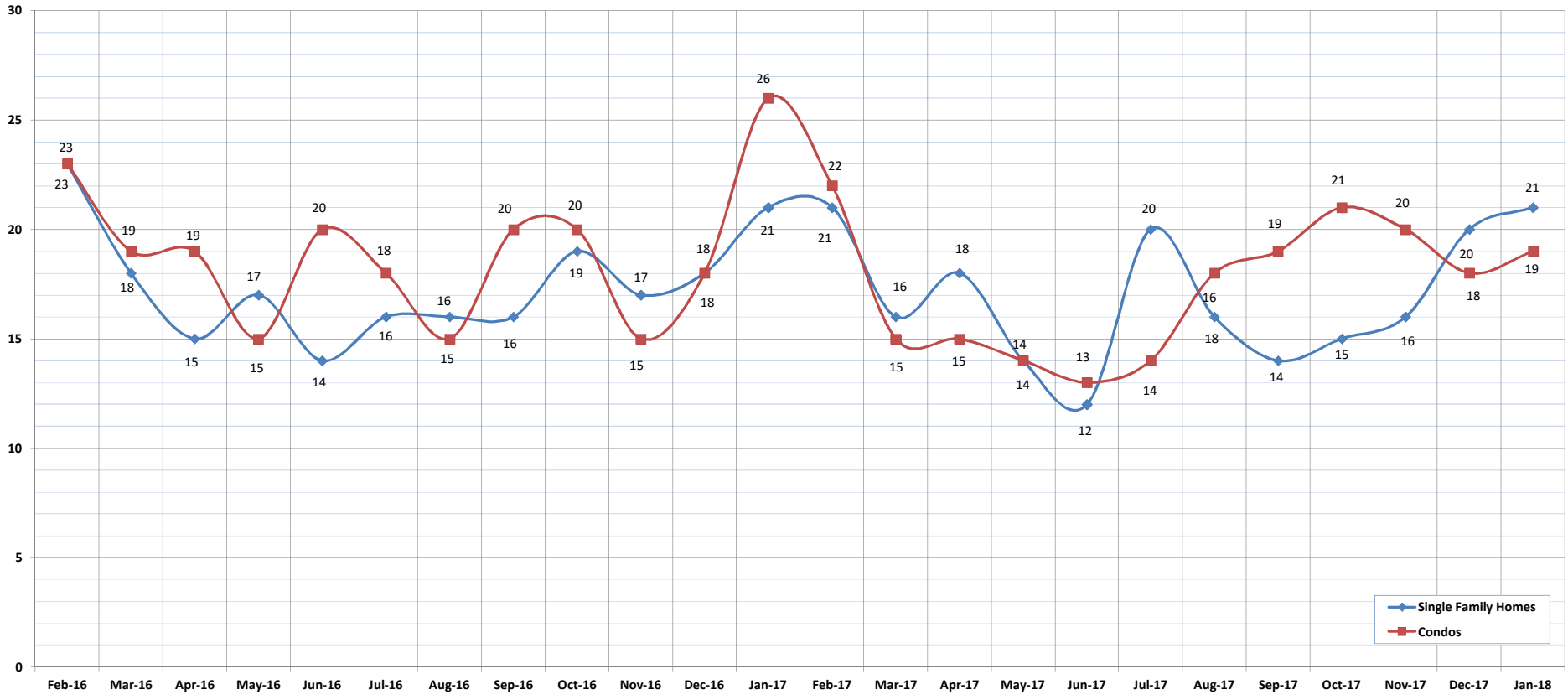
| | Feb-16 | Mar-16 | Apr-16 | May-16 | Jun-16 | Jul-16 | Aug-16 | Sep-16 | Oct-16 | Nov-16 | Dec-16 | Jan-17 | Feb-17 | Mar-17 | Apr-17 | May-17 | Jun-17 | Jul-17 | Aug-17 | Sep-17 | Oct-17 | Nov-17 | Dec-17 | Jan-18 |
|-----------------------------------|---------|---------|---------|---------|---------|---------|---------|---------|---------|---------|---------|---------|---------|---------|---------|---------|---------|---------|---------|---------|---------|---------|---------|---------|
| Median Sales Price : SFH | 700,000 | 725,000 | 720,000 | 719,000 | 760,000 | 746,000 | 747,500 | 750,000 | 742,000 | 750,000 | 730,000 | 730,000 | 755,000 | 752,000 | 712,500 | 745,000 | 795,000 | 750,000 | 786,250 | 760,000 | 752,000 | 773,500 | 750,000 | 772,000 |
| Median Sales Price: Condos | 378,444 | 385,000 | 389,500 | 373,000 | 405,500 | 400,000 | 398,000 | 383,250 | 396,000 | 395,000 | 390,000 | 380,000 | 385,000 | 400,000 | 415,500 | 406,500 | 400,000 | 425,000 | 419,000 | 425,000 | 397,500 | 405,000 | 405,000 | 430,000 |

Median Days on Market

January-18

OAHU, HAWAII

(The median number of days between when a property is first listed and when an offer is accepted.)



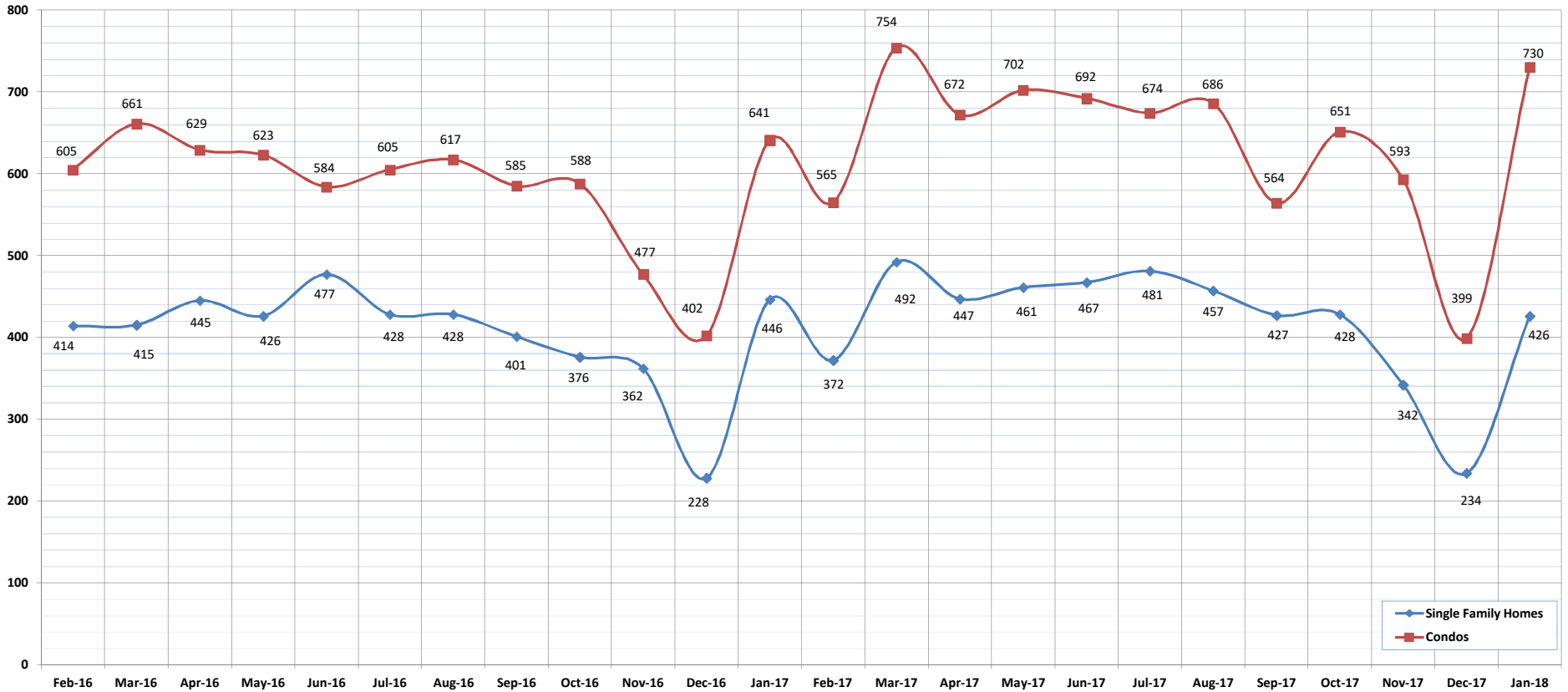
| | Feb-16 | Mar-16 | Apr-16 | May-16 | Jun-16 | Jul-16 | Aug-16 | Sep-16 | Oct-16 | Nov-16 | Dec-16 | Jan-17 | Feb-17 | Mar-17 | Apr-17 | May-17 | Jun-17 | Jul-17 | Aug-17 | Sep-17 | Oct-17 | Nov-17 | Dec-17 | Jan-18 |
|-------------------------------|--------|--------|--------|--------|--------|--------|--------|--------|--------|--------|--------|--------|--------|--------|--------|--------|--------|--------|--------|--------|--------|--------|--------|--------|
| Median Days on Market: SFH | 23 | 18 | 15 | 17 | 14 | 16 | 16 | 16 | 19 | 17 | 18 | 21 | 21 | 16 | 18 | 14 | 12 | 20 | 16 | 14 | 15 | 16 | 20 | 21 |
| Median Days on Market: Condos | 23 | 19 | 19 | 15 | 20 | 18 | 15 | 20 | 20 | 15 | 18 | 26 | 22 | 15 | 15 | 14 | 13 | 14 | 18 | 19 | 21 | 20 | 18 | 19 |

SOURCE: Honolulu Board of REALTORS®, compiled from MLS data.

New Listings

January-18
OAHU, HAWAII

(A count of the properties that have been newly listed on the market in a given month.)



| | Feb-16 | Mar-16 | Apr-16 | May-16 | Jun-16 | Jul-16 | Aug-16 | Sep-16 | Oct-16 | Nov-16 | Dec-16 | Jan-17 | Feb-17 | Mar-17 | Apr-17 | May-17 | Jun-17 | Jul-17 | Aug-17 | Sep-17 | Oct-17 | Nov-17 | Dec-17 | Jan-18 |
|--|--------|--------|--------|--------|--------|--------|--------|--------|--------|--------|--------|--------|--------|--------|--------|--------|--------|--------|--------|--------|--------|--------|--------|--------|
| New Listings: Single Family Homes | 414 | 415 | 445 | 426 | 477 | 428 | 428 | 401 | 376 | 362 | 228 | 446 | 372 | 492 | 447 | 461 | 467 | 481 | 457 | 427 | 428 | 342 | 234 | 426 |
| New Listings: Condos | 605 | 661 | 629 | 623 | 584 | 605 | 617 | 585 | 588 | 477 | 402 | 641 | 565 | 754 | 672 | 702 | 692 | 674 | 686 | 564 | 651 | 593 | 399 | 730 |
| New Listings: Total | 1019 | 1076 | 1074 | 1049 | 1061 | 1033 | 1045 | 986 | 964 | 839 | 630 | 1087 | 937 | 1246 | 1119 | 1163 | 1159 | 1155 | 1143 | 991 | 1079 | 935 | 633 | 1156 |

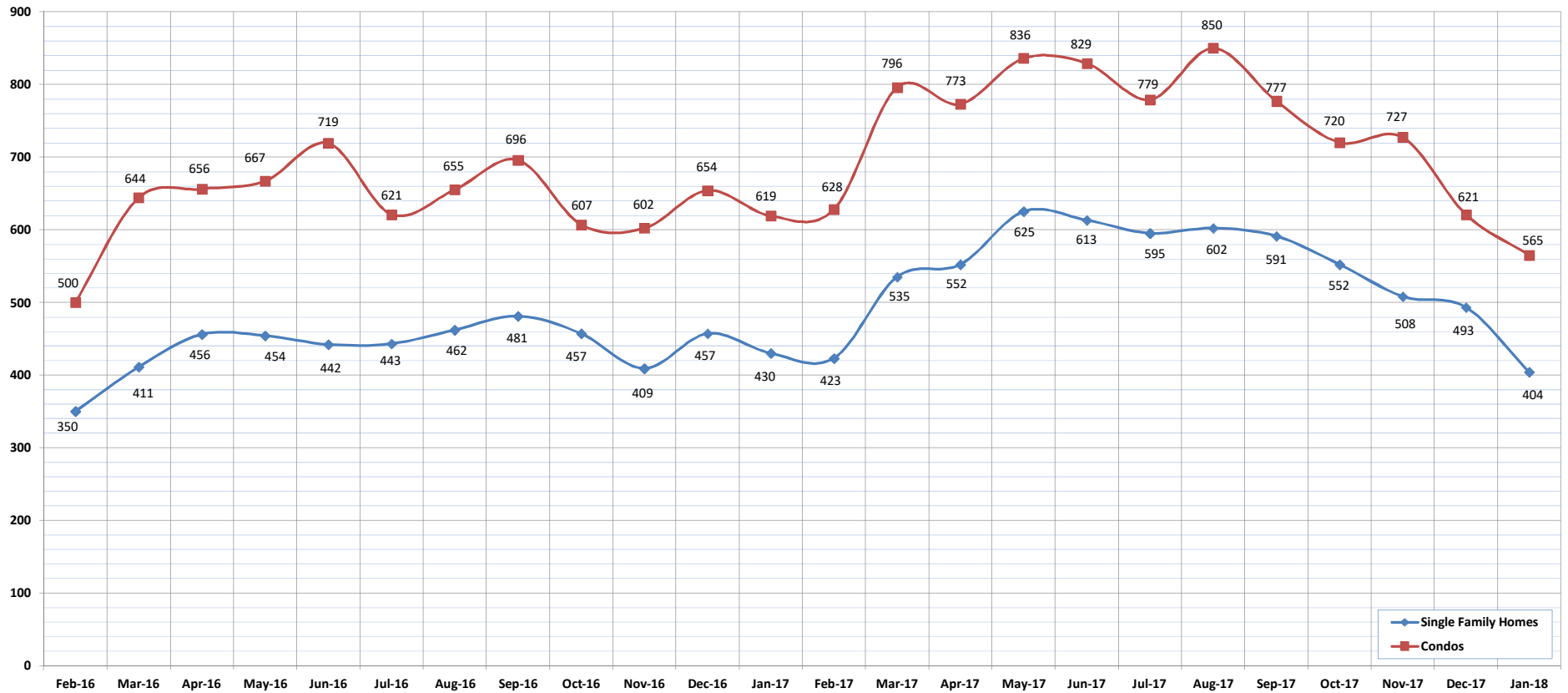
SOURCE: Honolulu Board of REALTORS®, compiled from MLS data.

Pending Sales

January-18

OAHU, HAWAII

(A count of the properties that have offers accepted on them in a given month.)



| | Feb-16 | Mar-16 | Apr-16 | May-16 | Jun-16 | Jul-16 | Aug-16 | Sep-16 | Oct-16 | Nov-16 | Dec-16 | Jan-17 | Feb-17 | Mar-17 | Apr-17 | May-17 | Jun-17 | Jul-17 | Aug-17 | Sep-17 | Oct-17 | Nov-17 | Dec-17 | Jan-18 |
|------------------------------------|--------|--------|--------|--------|--------|--------|--------|--------|--------|--------|--------|--------|--------|--------|--------|--------|--------|--------|--------|--------|--------|--------|--------|--------|
| Pending Sales: Single Family Homes | 350 | 411 | 456 | 454 | 442 | 443 | 462 | 481 | 457 | 409 | 457 | 430 | 423 | 535 | 552 | 625 | 613 | 595 | 602 | 591 | 552 | 508 | 493 | 404 |
| Pending Sales: Condos | 500 | 644 | 656 | 667 | 719 | 621 | 655 | 696 | 607 | 602 | 654 | 619 | 628 | 796 | 773 | 836 | 829 | 779 | 850 | 777 | 720 | 727 | 621 | 565 |
| Pending Sales: Total | 850 | 1055 | 1112 | 1121 | 1161 | 1064 | 1117 | 1177 | 1064 | 1011 | 1111 | 1049 | 1051 | 1331 | 1325 | 1461 | 1442 | 1374 | 1452 | 1368 | 1272 | 1235 | 1114 | 969 |

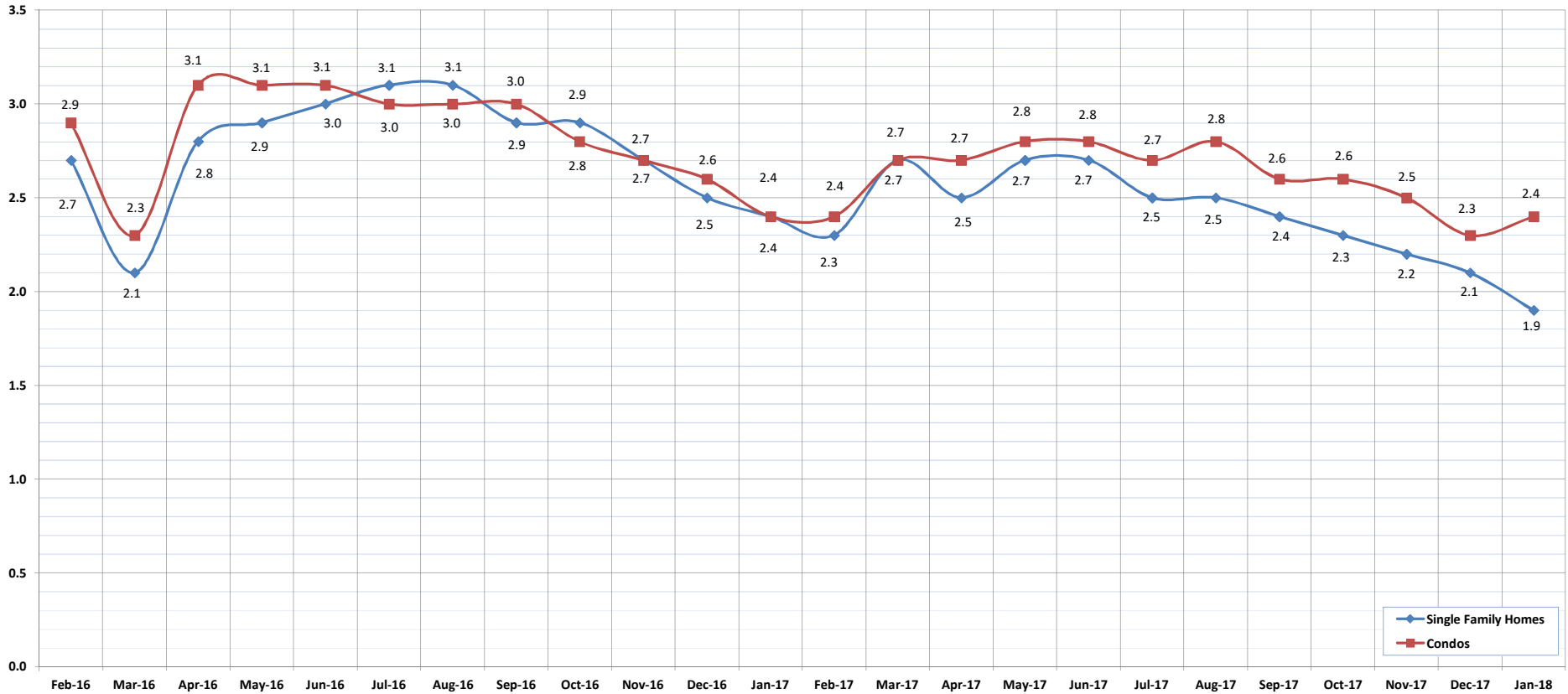
SOURCE: Honolulu Board of REALTORS®, compiled from MLS data.

Months of Inventory

January-18

OAHU, HAWAII

(Compares the number of active listings available to the average monthly pending sales.)



| | Feb-16 | Mar-16 | Apr-16 | May-16 | Jun-16 | Jul-16 | Aug-16 | Sep-16 | Oct-16 | Nov-16 | Dec-16 | Jan-17 | Feb-17 | Mar-17 | Apr-17 | May-17 | Jun-17 | Jul-17 | Aug-17 | Sep-17 | Oct-17 | Nov-17 | Dec-17 | Jan-18 |
|-----------------------------|--------|--------|--------|--------|--------|--------|--------|--------|--------|--------|--------|--------|--------|--------|--------|--------|--------|--------|--------|--------|--------|--------|--------|--------|
| Month of Inventory : SFH | 2.7 | 2.1 | 2.8 | 2.9 | 3.0 | 3.1 | 3.1 | 2.9 | 2.9 | 2.7 | 2.5 | 2.4 | 2.3 | 2.7 | 2.5 | 2.7 | 2.7 | 2.5 | 2.5 | 2.4 | 2.3 | 2.2 | 2.1 | 1.9 |
| Months of Inventory: Condos | 2.9 | 2.3 | 3.1 | 3.1 | 3.1 | 3.0 | 3.0 | 3.0 | 2.8 | 2.7 | 2.6 | 2.4 | 2.4 | 2.7 | 2.7 | 2.8 | 2.8 | 2.7 | 2.8 | 2.6 | 2.6 | 2.5 | 2.3 | 2.4 |

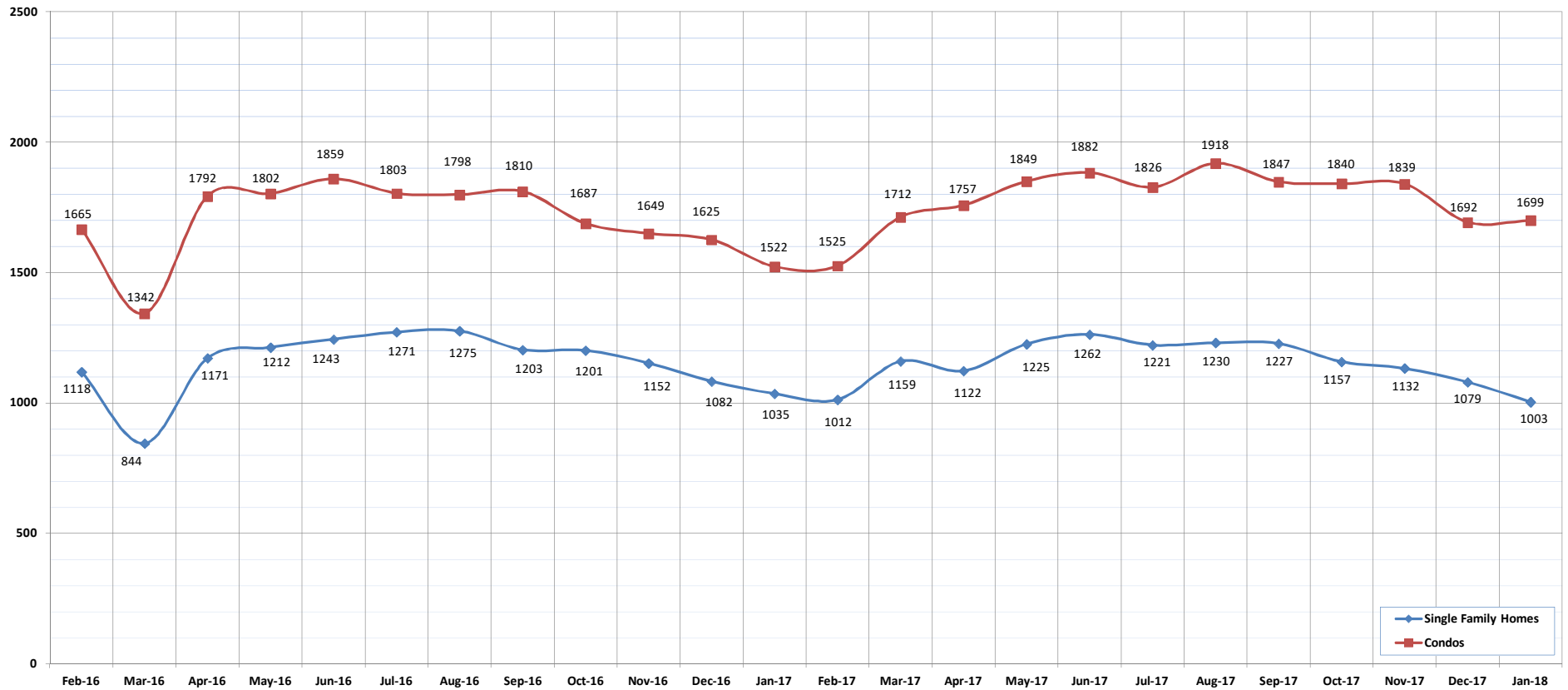
SOURCE: Honolulu Board of REALTORS®, compiled from MLS data.



Active Listings

January-18
OAHU, HAWAII

(The number of properties available for purchase during a given month.)



| | Feb-16 | Mar-16 | Apr-16 | May-16 | Jun-16 | Jul-16 | Aug-16 | Sep-16 | Oct-16 | Nov-16 | Dec-16 | Jan-17 | Feb-17 | Mar-17 | Apr-17 | May-17 | Jun-17 | Jul-17 | Aug-17 | Sep-17 | Oct-17 | Nov-17 | Dec-17 | Jan-18 |
|--------------------------------------|--------|--------|--------|--------|--------|--------|--------|--------|--------|--------|--------|--------|--------|--------|--------|--------|--------|--------|--------|--------|--------|--------|--------|--------|
| Active Listings: Single Family Homes | 1118 | 844 | 1171 | 1212 | 1243 | 1271 | 1275 | 1203 | 1201 | 1152 | 1082 | 1035 | 1012 | 1159 | 1122 | 1225 | 1262 | 1221 | 1230 | 1227 | 1157 | 1132 | 1079 | 1003 |
| Active Listings: Condos | 1665 | 1342 | 1792 | 1802 | 1859 | 1803 | 1798 | 1810 | 1687 | 1649 | 1625 | 1522 | 1525 | 1712 | 1757 | 1849 | 1882 | 1826 | 1918 | 1847 | 1840 | 1839 | 1692 | 1699 |
| Active Listings: Total | 2783 | 2186 | 2963 | 3014 | 3102 | 3074 | 3073 | 3013 | 2888 | 2801 | 2707 | 2557 | 2537 | 2871 | 2879 | 3074 | 3144 | 3047 | 3148 | 3074 | 2997 | 2971 | 2771 | 2702 |

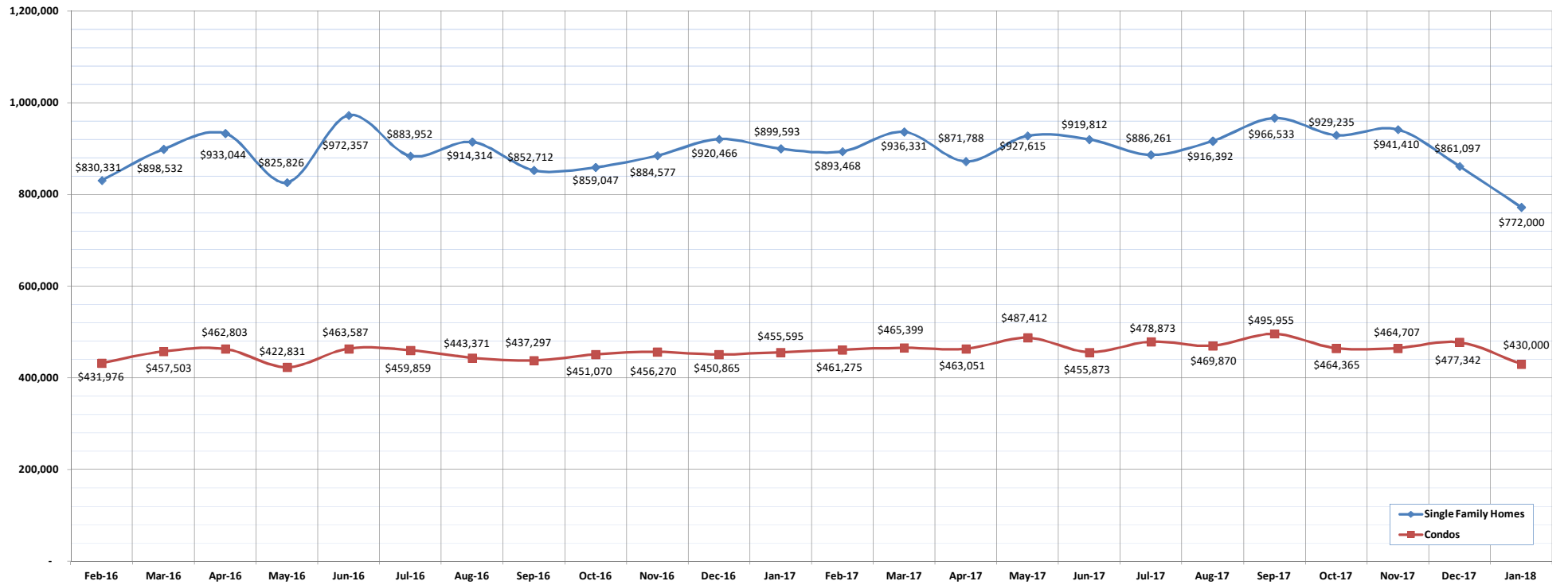
SOURCE: Honolulu Board of REALTORS®, compiled from MLS data.

Average Sales Price

January-18

OAHU, HAWAII

(The average sales price for all closed sales in a given month.)



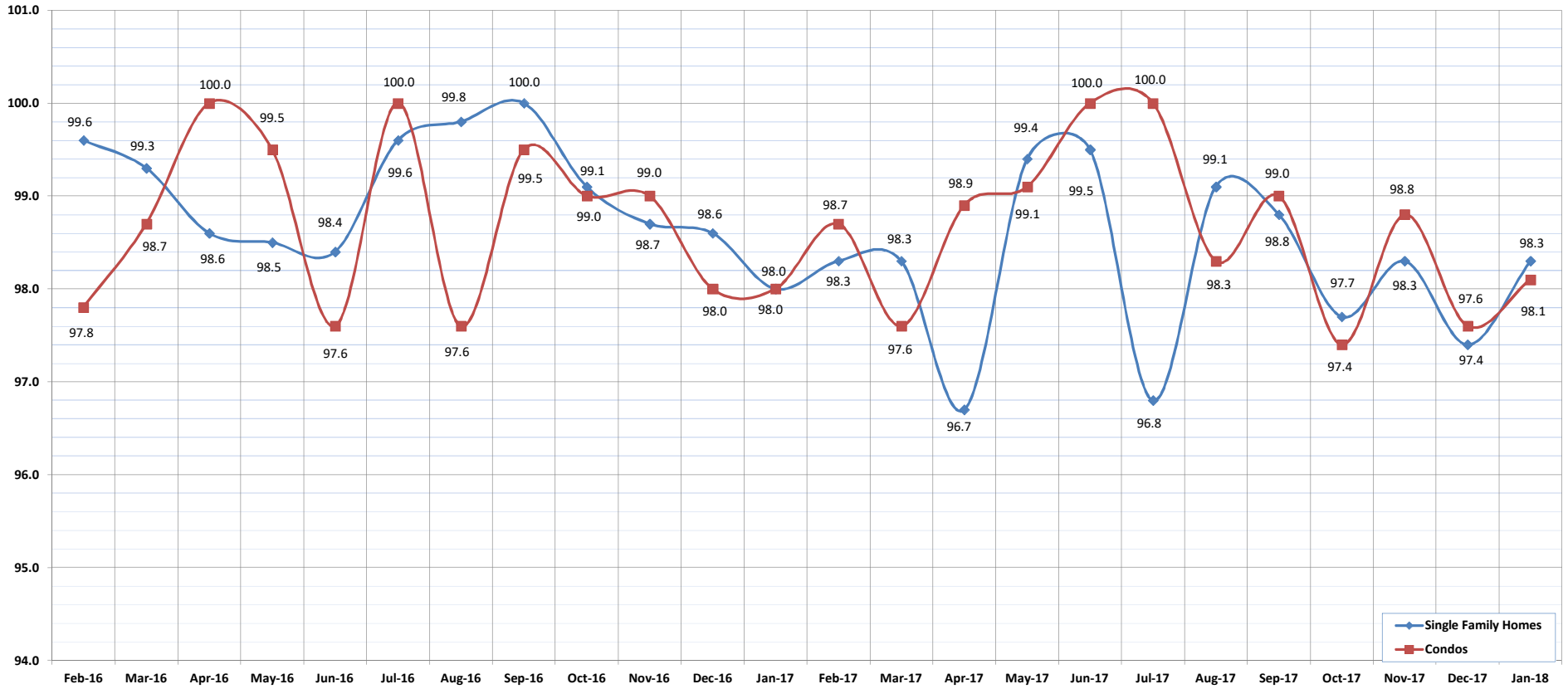
| | Feb-16 | Mar-16 | Apr-16 | May-16 | Jun-16 | Jul-16 | Aug-16 | Sep-16 | Oct-16 | Nov-16 | Dec-16 | Jan-17 | Feb-17 | Mar-17 | Apr-17 | May-17 | Jun-17 | Jul-17 | Aug-17 | Sep-17 | Oct-17 | Nov-17 | Dec-17 | Jan-18 |
|-----------------------------|---------|---------|---------|---------|---------|---------|---------|---------|---------|---------|---------|---------|---------|---------|---------|---------|---------|---------|---------|---------|---------|---------|---------|---------|
| Average Sales Price: SFH | 830,331 | 898,532 | 933,044 | 825,826 | 972,357 | 883,952 | 914,314 | 852,712 | 859,047 | 884,577 | 920,466 | 899,593 | 893,468 | 936,331 | 871,788 | 927,615 | 919,812 | 886,261 | 916,392 | 966,533 | 929,235 | 941,410 | 861,097 | 772,000 |
| Average Sales Price: Condos | 431,976 | 457,503 | 462,803 | 422,831 | 463,587 | 459,859 | 443,371 | 437,297 | 451,070 | 456,270 | 450,865 | 455,595 | 461,275 | 465,399 | 463,051 | 487,412 | 455,873 | 478,873 | 469,870 | 495,955 | 464,365 | 464,707 | 477,342 | 430,000 |

Percent of Original List Price Received

January-18

OAHU, HAWAII

(The percentage found when dividing a property's sales price by the original list price.)



| | Feb-16 | Mar-16 | Apr-16 | May-16 | Jun-16 | Jul-16 | Aug-16 | Sep-16 | Oct-16 | Nov-16 | Dec-16 | Jan-17 | Feb-17 | Mar-17 | Apr-17 | May-17 | Jun-17 | Jul-17 | Aug-17 | Sep-17 | Oct-17 | Nov-17 | Dec-17 | Jan-18 |
|--|--------|--------|--------|--------|--------|--------|--------|--------|--------|--------|--------|--------|--------|--------|--------|--------|--------|--------|--------|--------|--------|--------|--------|--------|
| Percent of Original List Price: SFH | 99.6 | 99.3 | 98.6 | 98.5 | 98.4 | 99.6 | 99.8 | 100.0 | 99.1 | 98.7 | 98.6 | 98.0 | 98.3 | 98.3 | 96.7 | 99.4 | 99.5 | 96.8 | 99.1 | 98.8 | 97.7 | 98.3 | 97.4 | 98.3 |
| Percent of Original List Price: Condos | 97.8 | 98.7 | 100.0 | 99.5 | 97.6 | 100.0 | 97.6 | 99.5 | 99.0 | 99.0 | 98.0 | 98.0 | 98.7 | 97.6 | 98.9 | 99.1 | 100.0 | 100.0 | 98.3 | 99.0 | 97.4 | 98.8 | 97.6 | 98.1 |

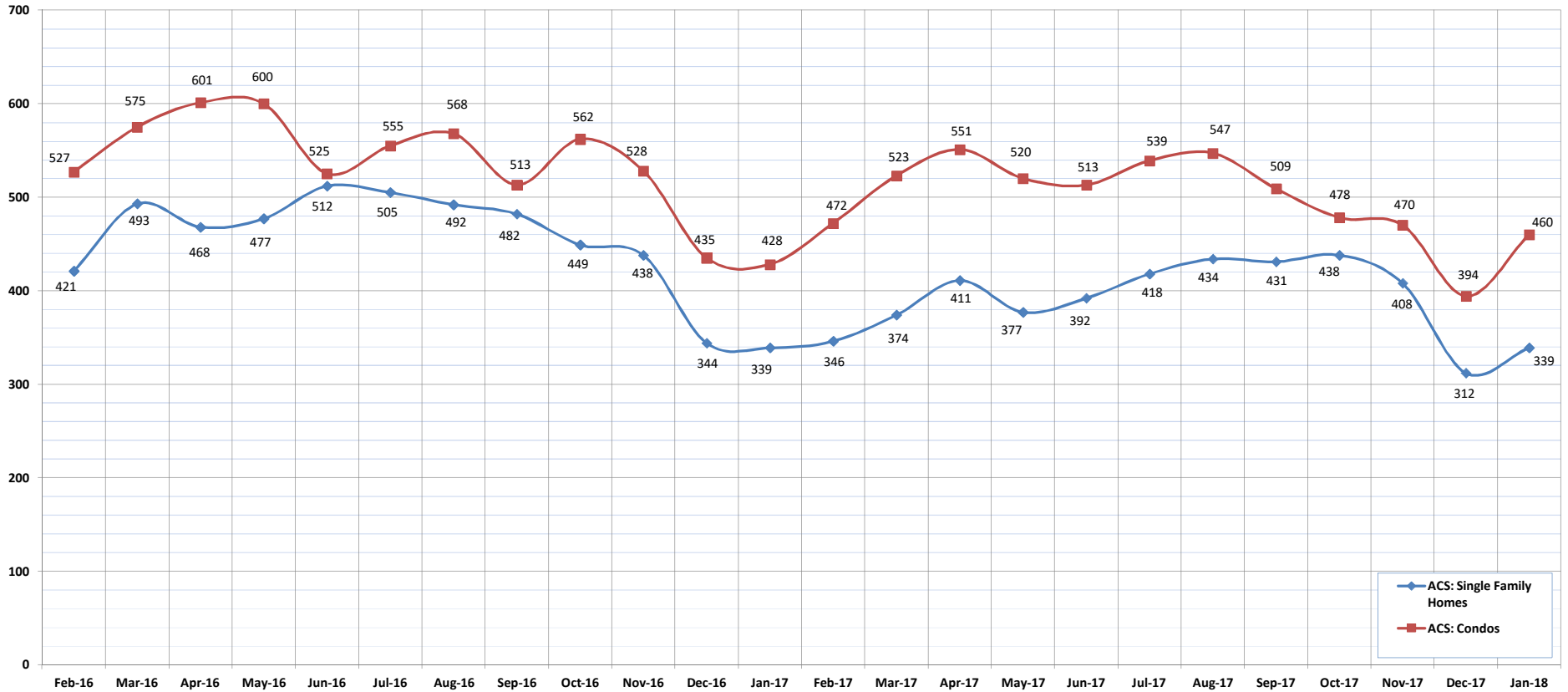
SOURCE: Honolulu Board of REALTORS®, compiled from MLS data.

Active Continue to Show

January-18

OAHU, HAWAII

(A count of the properties that are in ACS during the current month.)



| | Feb-16 | Mar-16 | Apr-16 | May-16 | Jun-16 | Jul-16 | Aug-16 | Sep-16 | Oct-16 | Nov-16 | Dec-16 | Jan-17 | Feb-17 | Mar-17 | Apr-17 | May-17 | Jun-17 | Jul-17 | Aug-17 | Sep-17 | Oct-17 | Nov-17 | Dec-17 | Jan-18 |
|--------------------------|--------|--------|--------|--------|--------|--------|--------|--------|--------|--------|--------|--------|--------|--------|--------|--------|--------|--------|--------|--------|--------|--------|--------|--------|
| ACS: Single Family Homes | 421 | 493 | 468 | 477 | 512 | 505 | 492 | 482 | 449 | 438 | 344 | 339 | 346 | 374 | 411 | 377 | 392 | 418 | 434 | 431 | 438 | 408 | 312 | 339 |
| ACS: Condos | 527 | 575 | 601 | 600 | 525 | 555 | 568 | 513 | 562 | 528 | 435 | 428 | 472 | 523 | 551 | 520 | 513 | 539 | 547 | 509 | 478 | 470 | 394 | 460 |

SOURCE: Honolulu Board of REALTORS®, compiled from MLS data.

Housing Supply Overview

January 2018

| Single Family Homes | Pending Sales | | | Days on Market | | | Percentage of Original Price Received | | | Inventory of Homes for Sale | | | Months Supply of Inventory | | |
|--------------------------------|---------------|-------------|-------------|----------------|-----------|--------------|---------------------------------------|--------------|--------------|-----------------------------|-------------|--------------|----------------------------|------------|--------------|
| | Jan-18 | Jan-17 | % | Jan-18 | Jan-17 | % | Jan-18 | Jan-17 | % | Jan-18 | Jan-17 | % | Jan-18 | Jan-17 | % |
| \$350,000 and Below | 93 | 117 | -20.5% | 36 | 32 | 12.5% | 96.1% | 96.2% | -0.1% | 14 | 17 | -17.6% | 1.5 | 1.6 | -6.3% |
| \$350,001 - \$475,000 | 197 | 237 | -16.9% | 28 | 20 | 40.0% | 98.4% | 97.4% | 1.0% | 45 | 40 | 12.5% | 2.6 | 1.8 | 44.4% |
| \$475,001 - \$550,000 | 273 | 320 | -14.7% | 14 | 16 | -12.5% | 99.2% | 98.8% | 0.4% | 43 | 44 | -2.3% | 1.8 | 1.5 | 20.0% |
| \$550,001 - \$650,000 | 675 | 681 | -0.9% | 12 | 13 | -7.7% | 99.6% | 100.0% | -0.4% | 91 | 102 | -10.8% | 1.6 | 1.8 | -11.1% |
| \$650,001 - \$800,000 | 1127 | 1020 | 10.5% | 16 | 17 | -5.9% | 98.7% | 98.8% | -0.1% | 180 | 204 | -11.8% | 2.0 | 2.6 | -23.1% |
| \$800,001 - \$1.1M | 969 | 864 | 12.2% | 17 | 18 | -5.6% | 98.9% | 98.0% | 0.9% | 210 | 189 | 11.1% | 2.7 | 2.8 | -3.6% |
| \$1.1M - \$1.9M | 572 | 498 | 14.9% | 31 | 31 | 0.0% | 96.3% | 95.9% | 0.4% | 201 | 210 | -4.3% | 4.4 | 5.3 | -17.0% |
| \$1.9M and Above | 184 | 173 | 6.4% | 60 | 78 | -23.1% | 92.4% | 91.7% | 0.8% | 219 | 229 | -4.4% | 14.3 | 16.2 | -11.7% |
| All Single Family Homes | 4090 | 3910 | 4.6% | 17 | 18 | -5.6% | 98.2% | 99.1% | -0.9% | 1003 | 1035 | -3.1% | 3.0 | 3.3 | -9.1% |

| Condos | Pending Sales | | | Days on Market | | | Percentage of Original Price Received | | | Inventory of Homes for Sale | | | Months Supply of Inventory | | |
|-----------------------|---------------|-------------|-------------|----------------|-----------|---------------|---------------------------------------|--------------|--------------|-----------------------------|-------------|--------------|----------------------------|------------|-------------|
| | Jan-18 | Jan-17 | % | Jan-18 | Jan-17 | % | Jan-18 | Jan-17 | % | Jan-18 | Jan-17 | % | Jan-18 | Jan-17 | % |
| \$150,000 and below | 303 | 387 | -21.7% | 42 | 43 | -2.3% | 93.9% | 90.7% | 3.5% | 125 | 112 | 11.6% | 4.3 | 3.4 | 26.5% |
| \$150,001 - \$200,000 | 298 | 344 | -13.4% | 23 | 29 | -20.7% | 96.1% | 96.3% | -0.2% | 75 | 77 | -2.6% | 2.7 | 2.8 | -3.6% |
| \$200,001 - \$250,000 | 437 | 416 | 5.0% | 20 | 27 | -25.9% | 96.8% | 96.9% | -0.1% | 100 | 109 | -8.3% | 2.8 | 3.2 | -12.5% |
| \$250,001 - \$300,000 | 501 | 566 | -11.5% | 21 | 19 | 10.5% | 97.7% | 98.4% | -0.7% | 111 | 104 | 6.7% | 2.5 | 2.0 | 25.0% |
| \$300,001 - \$375,000 | 1091 | 1060 | 2.9% | 13 | 14 | -7.1% | 98.6% | 99.3% | -0.7% | 208 | 217 | -4.1% | 2.3 | 2.5 | -8.0% |
| \$375,001 - \$475,000 | 1244 | 1163 | 7.0% | 13 | 14 | -7.1% | 98.5% | 98.7% | -0.2% | 273 | 207 | 31.9% | 2.7 | 2.2 | 22.7% |
| \$475,001 - \$700,000 | 1517 | 1287 | 17.9% | 16 | 18 | -11.1% | 98.7% | 98.7% | 0.0% | 364 | 300 | 21.3% | 3.0 | 3.2 | -6.3% |
| \$700,001 and above | 693 | 592 | 17.1% | 44 | 51 | -13.7% | 96.6% | 94.4% | 2.3% | 443 | 396 | 11.9% | 8.2 | 8.9 | -7.9% |
| All Condos | 6084 | 5815 | 4.6% | 17 | 20 | -15.0% | 98.6% | 98.8% | -0.2% | 1699 | 1522 | 11.6% | 3.4 | 3.3 | 3.0% |

SOURCE: Honolulu Board of REALTORS® , compiled from MLS data.

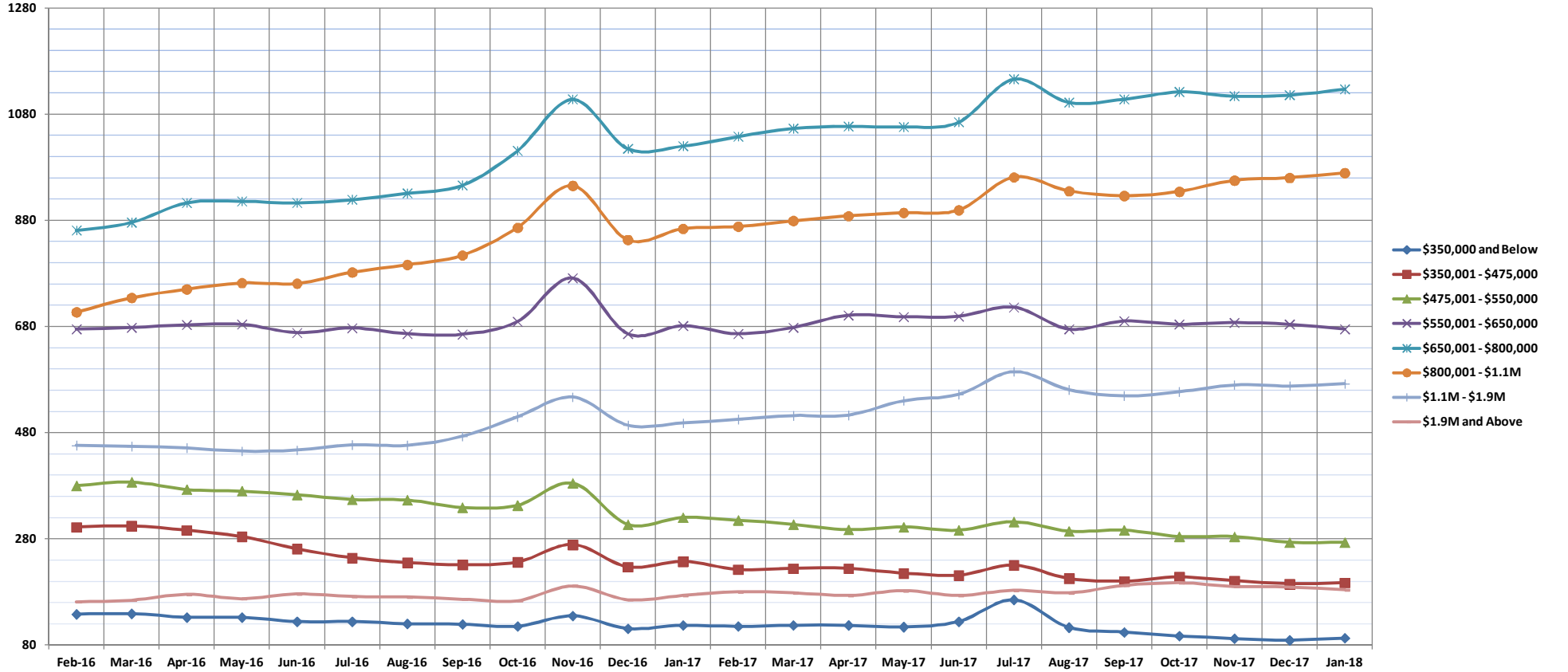


Pending Sales

Jan-18

Single Family Homes: Monthly, by Price Range

(A count of properties that have offers accepted on them in a given month. Based on a 12 month rolling total.)



| | Feb-16 | Mar-16 | Apr-16 | May-16 | Jun-16 | Jul-16 | Aug-16 | Sep-16 | Oct-16 | Nov-16 | Dec-16 | Jan-17 | Feb-17 | Mar-17 | Apr-17 | May-17 | Jun-17 | Jul-17 | Aug-17 | Sep-17 | Oct-17 | Nov-17 | Dec-17 | Jan-18 |
|-------------------------|--------|--------|--------|--------|--------|--------|--------|--------|--------|--------|--------|--------|--------|--------|--------|--------|--------|--------|--------|--------|--------|--------|--------|--------|
| \$350,000 and Below | 138 | 139 | 132 | 132 | 124 | 124 | 120 | 119 | 115 | 135 | 111 | 117 | 115 | 117 | 117 | 114 | 124 | 165 | 113 | 104 | 97 | 92 | 89 | 93 |
| \$350,001 - \$475,000 | 302 | 304 | 296 | 284 | 261 | 244 | 235 | 231 | 236 | 269 | 227 | 237 | 222 | 224 | 224 | 215 | 211 | 230 | 205 | 200 | 208 | 201 | 195 | 197 |
| \$475,001 - \$550,000 | 380 | 387 | 373 | 370 | 363 | 354 | 353 | 339 | 343 | 385 | 307 | 320 | 315 | 307 | 297 | 302 | 296 | 312 | 294 | 296 | 284 | 284 | 273 | 273 |
| \$550,001 - \$650,000 | 675 | 678 | 683 | 684 | 668 | 677 | 666 | 665 | 689 | 771 | 666 | 681 | 666 | 678 | 701 | 698 | 699 | 716 | 675 | 690 | 684 | 687 | 684 | 675 |
| \$650,001 - \$800,000 | 861 | 876 | 913 | 916 | 913 | 919 | 931 | 946 | 1011 | 1108 | 1015 | 1020 | 1038 | 1053 | 1057 | 1056 | 1065 | 1146 | 1102 | 1108 | 1122 | 1114 | 1116 | 1127 |
| \$800,001 - \$1.1M | 707 | 734 | 750 | 762 | 761 | 782 | 796 | 814 | 866 | 945 | 843 | 864 | 868 | 879 | 888 | 894 | 899 | 961 | 935 | 926 | 934 | 955 | 960 | 969 |
| \$1.1M - \$1.9M | 456 | 454 | 451 | 445 | 447 | 457 | 456 | 473 | 510 | 547 | 494 | 498 | 505 | 512 | 513 | 540 | 552 | 595 | 561 | 549 | 557 | 570 | 568 | 572 |
| \$1.9M and Above | 161 | 164 | 175 | 167 | 176 | 171 | 170 | 166 | 163 | 191 | 165 | 173 | 180 | 178 | 173 | 182 | 173 | 183 | 178 | 192 | 197 | 190 | 189 | 184 |
| All Single Family Homes | 3680 | 3736 | 3773 | 3760 | 3713 | 3728 | 3727 | 3753 | 3933 | 4351 | 3828 | 3910 | 3909 | 3948 | 3970 | 4001 | 4019 | 4308 | 4063 | 4065 | 4083 | 4093 | 4074 | 4090 |

SOURCE: Honolulu Board of REALTORS®, compiled from MLS data.

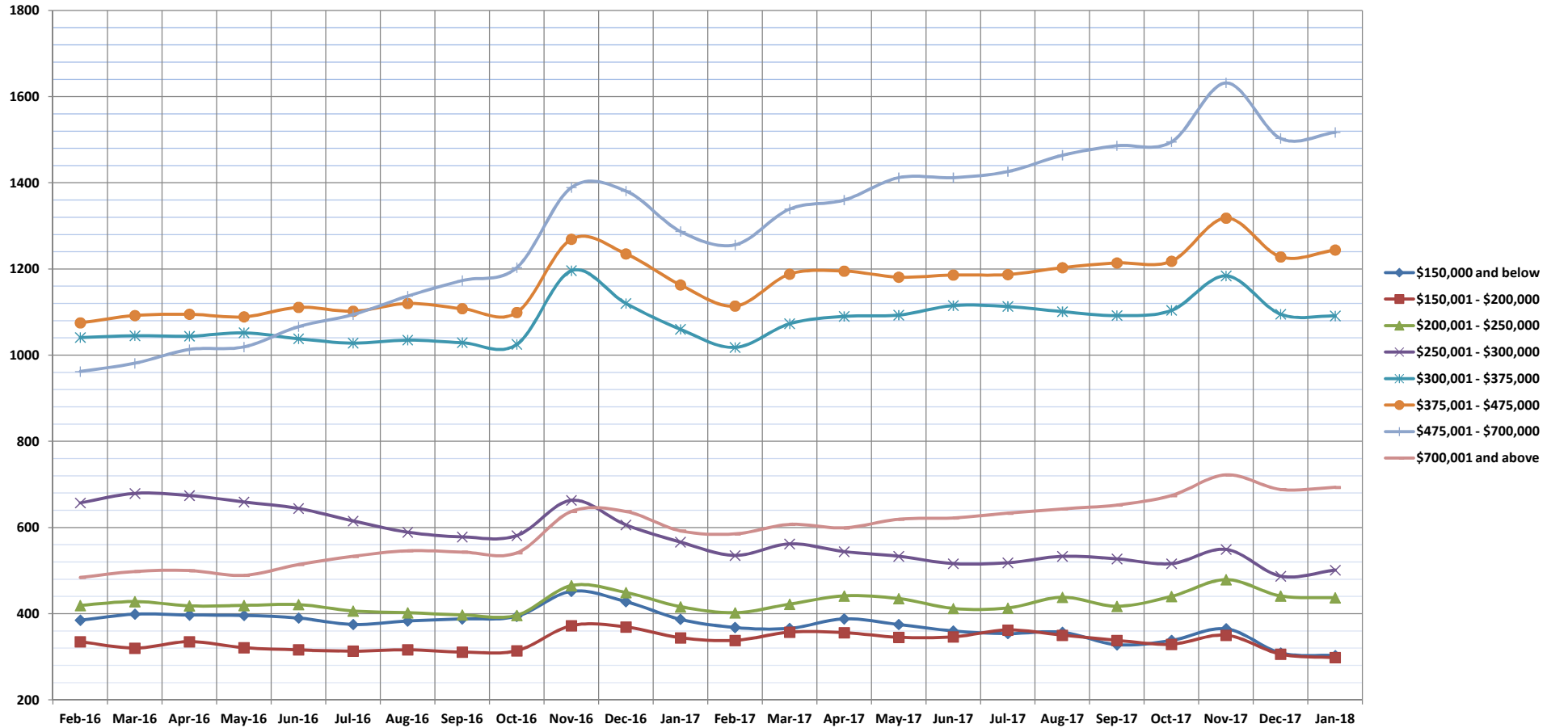


Pending Sales

Jan-18

Condos: Monthly, by Price Range

(A count of properties that have offers accepted on them in a given month. Based on a 12 month rolling total.)



| | Feb-16 | Mar-16 | Apr-16 | May-16 | Jun-16 | Jul-16 | Aug-16 | Sep-16 | Oct-16 | Nov-16 | Dec-16 | Jan-17 | Feb-17 | Mar-17 | Apr-17 | May-17 | Jun-17 | Jul-17 | Aug-17 | Sep-17 | Oct-17 | Nov-17 | Dec-17 | Jan-18 |
|------------------------------|--------|--------|--------|--------|--------|--------|--------|--------|--------|--------|--------|--------|--------|--------|--------|--------|--------|--------|--------|--------|--------|--------|--------|--------|
| \$150,000 and below | 385 | 399 | 397 | 396 | 390 | 375 | 383 | 388 | 394 | 452 | 428 | 387 | 368 | 366 | 388 | 375 | 360 | 354 | 357 | 328 | 338 | 365 | 309 | 303 |
| \$150,001 - \$200,000 | 335 | 320 | 335 | 321 | 316 | 313 | 316 | 311 | 314 | 372 | 369 | 344 | 338 | 357 | 356 | 345 | 346 | 362 | 350 | 338 | 329 | 350 | 306 | 298 |
| \$200,001 - \$250,000 | 419 | 428 | 418 | 419 | 421 | 406 | 402 | 397 | 396 | 465 | 449 | 416 | 402 | 422 | 441 | 435 | 412 | 413 | 438 | 417 | 440 | 479 | 441 | 437 |
| \$250,001 - \$300,000 | 657 | 679 | 674 | 659 | 644 | 615 | 589 | 578 | 581 | 663 | 606 | 566 | 535 | 562 | 544 | 533 | 516 | 518 | 533 | 527 | 516 | 549 | 487 | 501 |
| \$300,001 - \$375,000 | 1041 | 1045 | 1044 | 1052 | 1038 | 1028 | 1035 | 1029 | 1025 | 1196 | 1120 | 1060 | 1018 | 1073 | 1090 | 1093 | 1115 | 1113 | 1101 | 1092 | 1104 | 1184 | 1095 | 1091 |
| \$375,001 - \$475,000 | 1075 | 1092 | 1095 | 1089 | 1111 | 1102 | 1120 | 1108 | 1099 | 1269 | 1235 | 1163 | 1114 | 1188 | 1195 | 1181 | 1186 | 1187 | 1203 | 1214 | 1218 | 1318 | 1228 | 1244 |
| \$475,001 - \$700,000 | 962 | 981 | 1013 | 1019 | 1066 | 1094 | 1137 | 1173 | 1203 | 1389 | 1381 | 1287 | 1256 | 1339 | 1360 | 1412 | 1412 | 1426 | 1464 | 1486 | 1495 | 1632 | 1503 | 1517 |
| \$700,001 and above | 484 | 498 | 500 | 489 | 514 | 533 | 546 | 543 | 541 | 637 | 637 | 592 | 585 | 607 | 599 | 619 | 622 | 633 | 643 | 652 | 674 | 722 | 688 | 693 |
| All Condos | 5358 | 5442 | 5476 | 5444 | 5500 | 5466 | 5528 | 5527 | 5553 | 6443 | 6225 | 5815 | 5616 | 5914 | 5973 | 5993 | 5969 | 6006 | 6089 | 6054 | 6114 | 6599 | 6057 | 6084 |

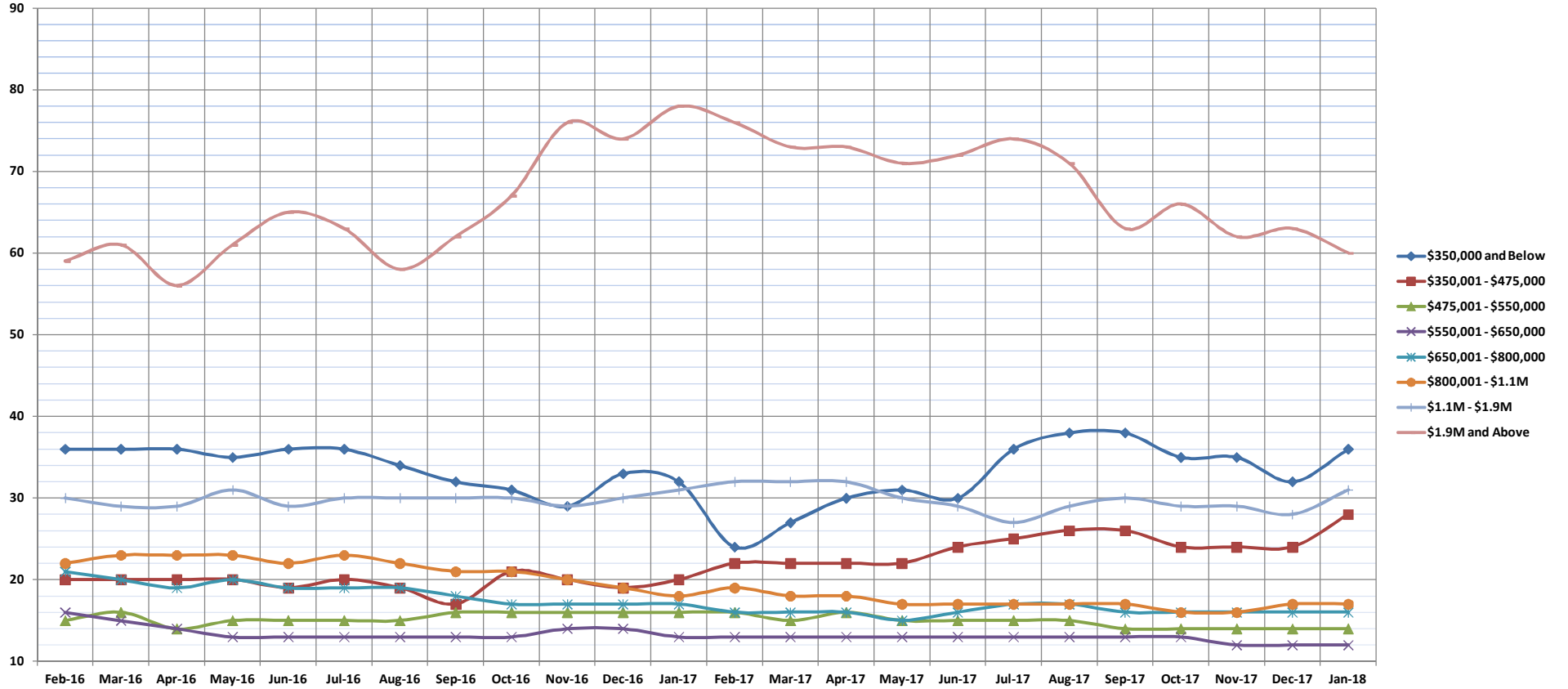
SOURCE: Honolulu Board of REALTORS®, compiled from MLS data.

Days on Market Until Sale

Jan-18

Single Family Homes: Monthly, by Price Range

(The median number of days between when a property is first listed and when an offer is accepted. Based on a 12 month rolling median.)



| | Feb-16 | Mar-16 | Apr-16 | May-16 | Jun-16 | Jul-16 | Aug-16 | Sep-16 | Oct-16 | Nov-16 | Dec-16 | Jan-17 | Feb-17 | Mar-17 | Apr-17 | May-17 | Jun-17 | Jul-17 | Aug-17 | Sep-17 | Oct-17 | Nov-17 | Dec-17 | Jan-18 |
|-------------------------|--------|--------|--------|--------|--------|--------|--------|--------|--------|--------|--------|--------|--------|--------|--------|--------|--------|--------|--------|--------|--------|--------|--------|--------|
| \$350,000 and Below | 36 | 36 | 36 | 35 | 36 | 36 | 34 | 32 | 31 | 29 | 33 | 32 | 24 | 27 | 30 | 31 | 30 | 36 | 38 | 38 | 35 | 35 | 32 | 36 |
| \$350,001 - \$475,000 | 20 | 20 | 20 | 20 | 19 | 20 | 19 | 17 | 21 | 20 | 19 | 20 | 22 | 22 | 22 | 22 | 24 | 25 | 26 | 26 | 24 | 24 | 24 | 28 |
| \$475,001 - \$550,000 | 15 | 16 | 14 | 15 | 15 | 15 | 15 | 16 | 16 | 16 | 16 | 16 | 16 | 15 | 16 | 15 | 15 | 15 | 15 | 14 | 14 | 14 | 14 | 14 |
| \$550,001 - \$650,000 | 16 | 15 | 14 | 13 | 13 | 13 | 13 | 13 | 13 | 14 | 14 | 13 | 13 | 13 | 13 | 13 | 13 | 13 | 13 | 13 | 13 | 13 | 12 | 12 |
| \$650,001 - \$800,000 | 21 | 20 | 19 | 20 | 19 | 19 | 19 | 18 | 17 | 17 | 17 | 17 | 16 | 16 | 16 | 15 | 16 | 17 | 17 | 16 | 16 | 16 | 16 | 16 |
| \$800,001 - \$1.1M | 22 | 23 | 23 | 23 | 22 | 23 | 22 | 21 | 21 | 20 | 19 | 18 | 19 | 18 | 18 | 18 | 18 | 17 | 17 | 17 | 17 | 16 | 16 | 17 |
| \$1.1M - \$1.9M | 30 | 29 | 29 | 31 | 29 | 30 | 30 | 30 | 30 | 29 | 30 | 31 | 32 | 32 | 32 | 30 | 29 | 27 | 29 | 30 | 29 | 29 | 28 | 31 |
| \$1.9M and Above | 59 | 61 | 56 | 61 | 65 | 63 | 58 | 62 | 67 | 76 | 74 | 78 | 76 | 73 | 73 | 71 | 72 | 74 | 71 | 63 | 66 | 62 | 63 | 60 |
| All Single Family Homes | 20 | 20 | 19 | 19 | 19 | 19 | 19 | 18 | 18 | 18 | 18 | 18 | 18 | 18 | 18 | 17 | 18 | 18 | 18 | 18 | 17 | 17 | 17 | 17 |

SOURCE: Honolulu Board of REALTORS®, compiled from MLS data.

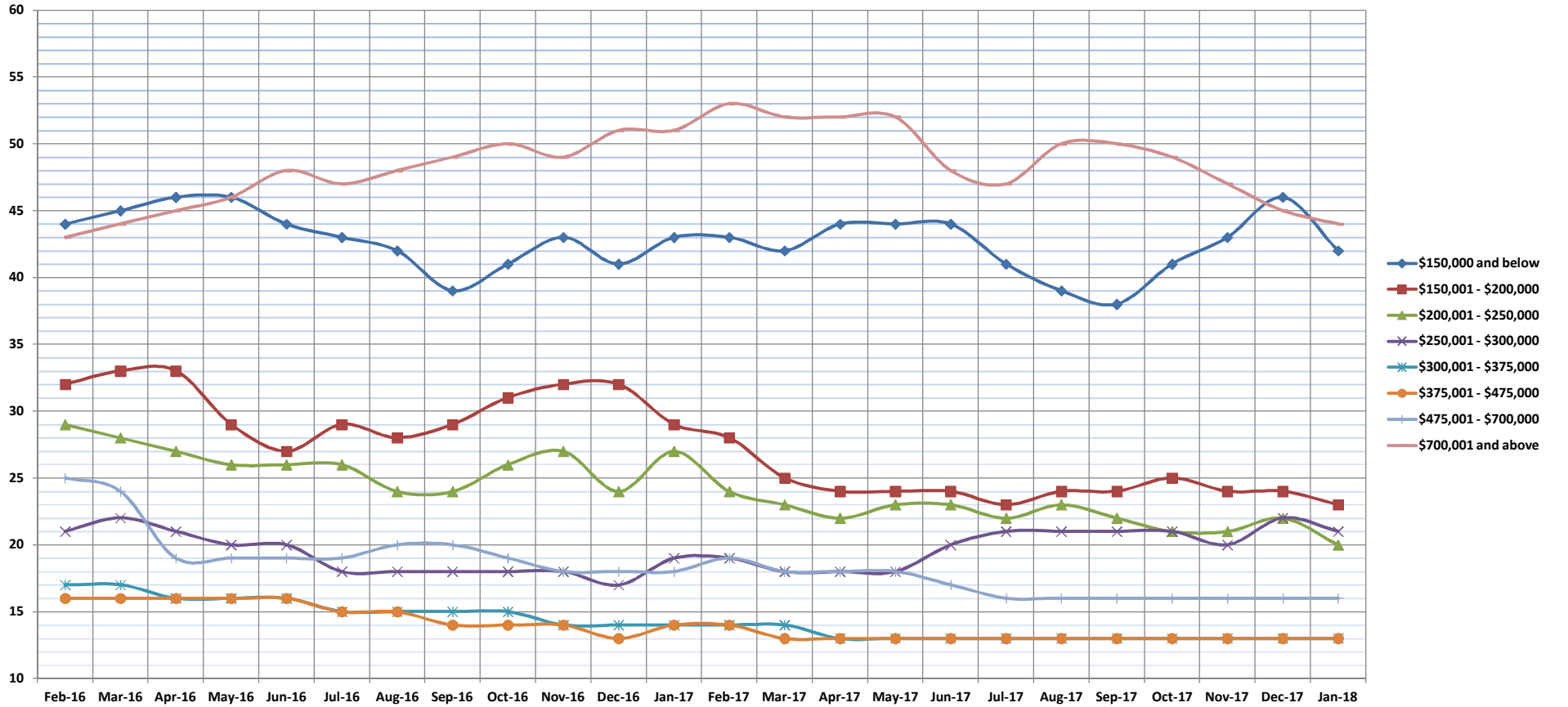


Days on Market Until Sale

Jan-18

Condos: Monthly, by Price Range

(The median number of days between when a property is first listed and when an offer is accepted. Based on a 12 month rolling median.)



| | Feb-16 | Mar-16 | Apr-16 | May-16 | Jun-16 | Jul-16 | Aug-16 | Sep-16 | Oct-16 | Nov-16 | Dec-16 | Jan-17 | Feb-17 | Mar-17 | Apr-17 | May-17 | Jun-17 | Jul-17 | Aug-17 | Sep-17 | Oct-17 | Nov-17 | Dec-17 | Jan-18 |
|-----------------------|--------|--------|--------|--------|--------|--------|--------|--------|--------|--------|--------|--------|--------|--------|--------|--------|--------|--------|--------|--------|--------|--------|--------|--------|
| \$150,000 and below | 44 | 45 | 46 | 46 | 44 | 43 | 42 | 39 | 41 | 43 | 41 | 43 | 43 | 42 | 44 | 44 | 44 | 41 | 39 | 38 | 41 | 43 | 46 | 42 |
| \$150,001 - \$200,000 | 32 | 33 | 33 | 29 | 27 | 29 | 28 | 29 | 31 | 32 | 32 | 29 | 28 | 25 | 24 | 24 | 24 | 23 | 24 | 24 | 25 | 24 | 24 | 23 |
| \$200,001 - \$250,000 | 29 | 28 | 27 | 26 | 26 | 26 | 24 | 24 | 26 | 27 | 24 | 27 | 24 | 23 | 22 | 23 | 23 | 22 | 23 | 22 | 21 | 21 | 21 | 20 |
| \$250,001 - \$300,000 | 21 | 22 | 21 | 20 | 20 | 18 | 18 | 18 | 18 | 18 | 17 | 19 | 19 | 18 | 18 | 18 | 20 | 21 | 21 | 21 | 21 | 21 | 20 | 21 |
| \$300,001 - \$375,000 | 17 | 17 | 16 | 16 | 16 | 15 | 15 | 15 | 15 | 14 | 14 | 14 | 14 | 14 | 13 | 13 | 13 | 13 | 13 | 13 | 13 | 13 | 13 | 13 |
| \$375,001 - \$475,000 | 16 | 16 | 16 | 16 | 16 | 15 | 15 | 14 | 14 | 14 | 13 | 14 | 14 | 13 | 13 | 13 | 13 | 13 | 13 | 13 | 13 | 13 | 13 | 13 |
| \$475,001 - \$700,000 | 25 | 24 | 19 | 19 | 19 | 19 | 20 | 20 | 19 | 18 | 18 | 18 | 19 | 18 | 18 | 18 | 17 | 16 | 16 | 16 | 16 | 16 | 16 | 16 |
| \$700,001 and above | 43 | 44 | 45 | 46 | 48 | 47 | 48 | 49 | 50 | 49 | 51 | 51 | 53 | 52 | 52 | 52 | 48 | 47 | 50 | 50 | 49 | 47 | 45 | 44 |
| All Condos | 22 | 21 | 21 | 21 | 21 | 20 | 20 | 20 | 20 | 20 | 19 | 20 | 20 | 19 | 19 | 19 | 18 | 18 | 18 | 18 | 18 | 18 | 18 | 17 |

SOURCE: Honolulu Board of REALTORS®, compiled from MLS data.

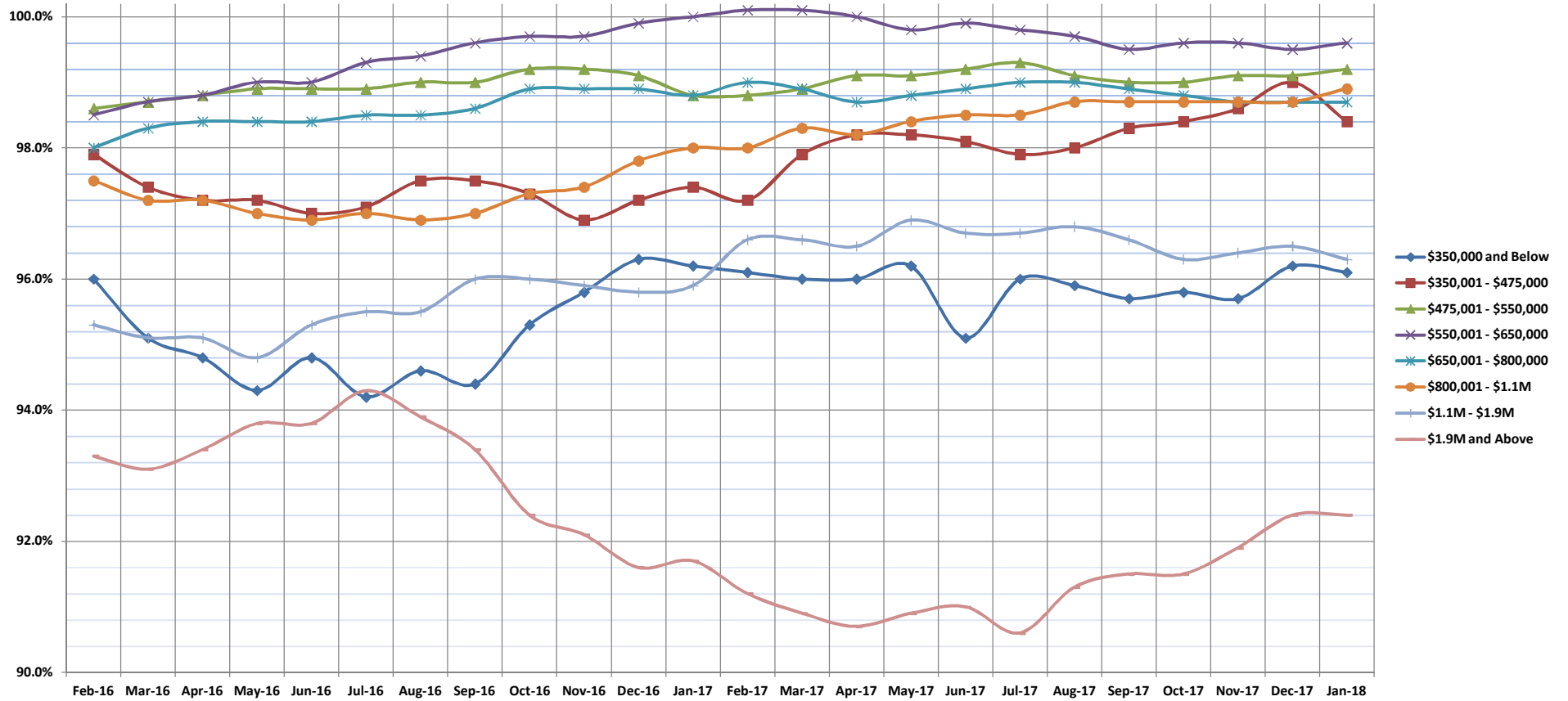


Percentage of Original Price Received

Jan-18

Single Family Homes: Monthly, by Price Range

(The average percentage found when dividing a property's sales price by the original list price. Based on a rolling 12 month average.)



| | Feb-16 | Mar-16 | Apr-16 | May-16 | Jun-16 | Jul-16 | Aug-16 | Sep-16 | Oct-16 | Nov-16 | Dec-16 | Jan-17 | Feb-17 | Mar-17 | Apr-17 | May-17 | Jun-17 | Jul-17 | Aug-17 | Sep-17 | Oct-17 | Nov-17 | Dec-17 | Jan-18 |
|-------------------------|--------|--------|--------|--------|--------|--------|--------|--------|--------|--------|--------|--------|--------|--------|--------|--------|--------|--------|--------|--------|--------|--------|--------|--------|
| \$350,000 and Below | 96.0% | 95.1% | 94.8% | 94.3% | 94.8% | 94.2% | 94.6% | 94.4% | 95.3% | 95.8% | 96.3% | 96.2% | 96.1% | 96.0% | 96.0% | 96.2% | 95.1% | 96.0% | 95.9% | 95.7% | 95.8% | 95.7% | 96.2% | 96.1% |
| \$350,001 - \$475,000 | 97.9% | 97.4% | 97.2% | 97.2% | 97.0% | 97.1% | 97.5% | 97.5% | 97.3% | 96.9% | 97.2% | 97.4% | 97.2% | 97.9% | 98.2% | 98.2% | 98.1% | 97.9% | 98.0% | 98.3% | 98.4% | 98.6% | 99.0% | 98.4% |
| \$475,001 - \$550,000 | 98.6% | 98.7% | 98.8% | 98.9% | 98.9% | 98.9% | 99.0% | 99.0% | 99.2% | 99.2% | 99.1% | 98.8% | 98.8% | 98.9% | 99.1% | 99.1% | 99.2% | 99.3% | 99.1% | 99.0% | 99.0% | 99.1% | 99.1% | 99.2% |
| \$550,001 - \$650,000 | 98.5% | 98.7% | 98.8% | 99.0% | 99.0% | 99.3% | 99.4% | 99.6% | 99.7% | 99.9% | 100.0% | 100.1% | 100.1% | 100.0% | 99.8% | 99.8% | 99.9% | 99.8% | 99.7% | 99.5% | 99.6% | 99.6% | 99.6% | 99.6% |
| \$650,001 - \$800,000 | 98.0% | 98.3% | 98.4% | 98.4% | 98.4% | 98.5% | 98.5% | 98.6% | 98.9% | 98.9% | 98.9% | 98.8% | 99.0% | 98.9% | 98.7% | 98.8% | 98.8% | 98.9% | 99.0% | 99.0% | 98.9% | 98.8% | 98.7% | 98.7% |
| \$800,001 - \$1.1M | 97.5% | 97.2% | 97.2% | 97.0% | 96.9% | 97.0% | 96.9% | 97.0% | 97.3% | 97.4% | 97.8% | 98.0% | 98.0% | 98.3% | 98.2% | 98.4% | 98.5% | 98.5% | 98.7% | 98.7% | 98.7% | 98.7% | 98.7% | 98.7% |
| \$1.1M - \$1.9M | 95.3% | 95.1% | 95.1% | 94.8% | 95.3% | 95.5% | 95.5% | 96.0% | 96.0% | 95.9% | 95.8% | 95.9% | 96.6% | 96.6% | 96.5% | 96.9% | 96.7% | 96.7% | 96.8% | 96.6% | 96.3% | 96.4% | 96.5% | 96.3% |
| \$1.9M and Above | 93.3% | 93.1% | 93.4% | 93.8% | 93.8% | 94.3% | 93.9% | 93.4% | 92.4% | 92.1% | 91.6% | 91.7% | 91.2% | 90.9% | 90.7% | 90.9% | 91.0% | 90.6% | 91.3% | 91.5% | 91.5% | 91.9% | 92.4% | 92.4% |
| All Single Family Homes | 98.3% | 98.5% | 98.6% | 98.7% | 98.6% | 98.8% | 98.8% | 98.9% | 99.1% | 99.1% | 99.1% | 99.1% | 99.0% | 98.9% | 98.7% | 98.8% | 98.9% | 98.7% | 98.6% | 98.5% | 98.4% | 98.3% | 98.2% | 98.2% |

SOURCE: Honolulu Board of REALTORS®, compiled from MLS data.

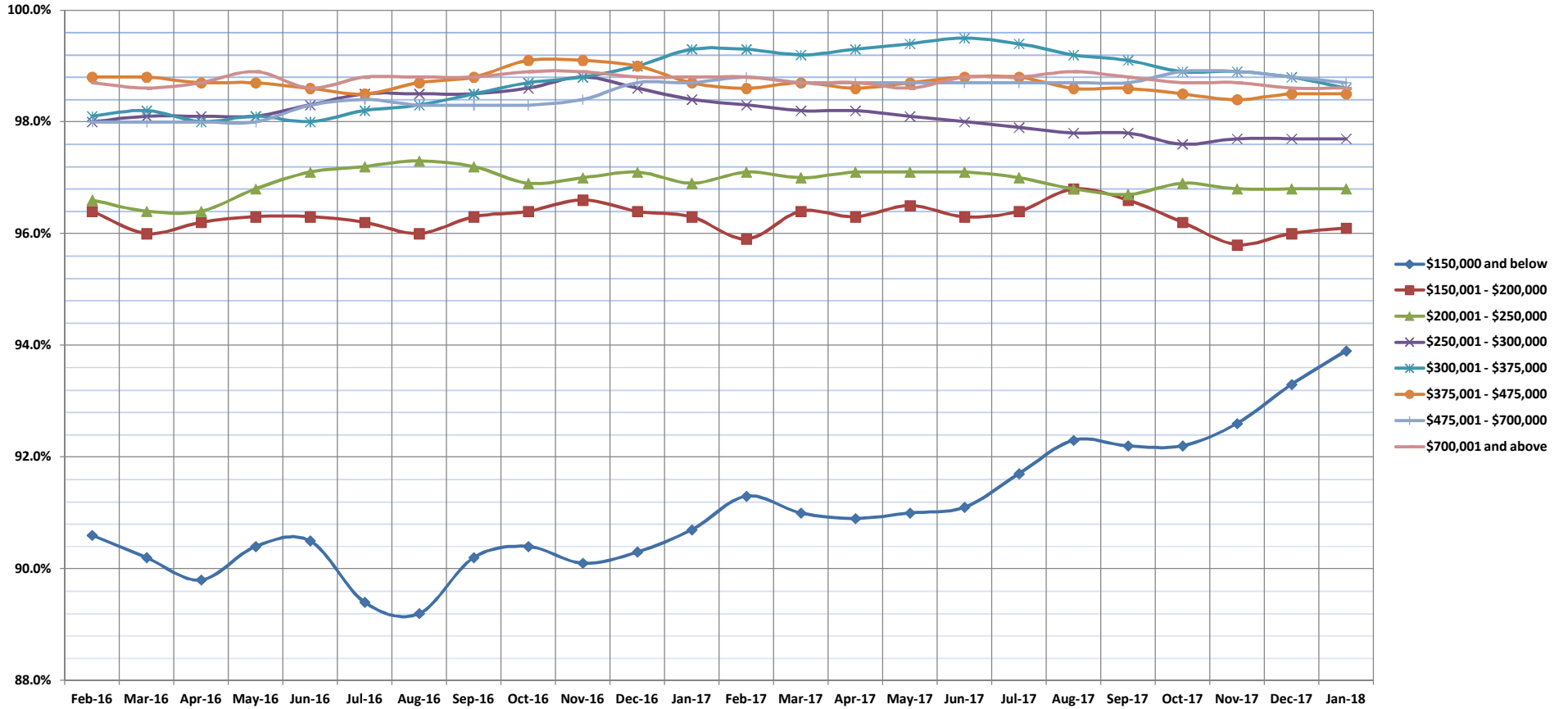


Percentage of Original Price Received

Jan-18

Condos: Monthly, by Price Range

(The average percentage found when dividing a property's sales price by the original list price. Based on a rolling 12 month average.)



| | Feb-16 | Mar-16 | Apr-16 | May-16 | Jun-16 | Jul-16 | Aug-16 | Sep-16 | Oct-16 | Nov-16 | Dec-16 | Jan-17 | Feb-17 | Mar-17 | Apr-17 | May-17 | Jun-17 | Jul-17 | Aug-17 | Sep-17 | Oct-17 | Nov-17 | Dec-17 | Jan-18 | |
|------------------------------|--------|--------|--------|--------|--------|--------|--------|--------|--------|--------|--------|--------|--------|--------|--------|--------|--------|--------|--------|--------|--------|--------|--------|--------|-------|
| \$150,000 and below | 90.6% | 90.2% | 89.8% | 90.4% | 90.5% | 89.4% | 89.2% | 90.2% | 90.4% | 90.1% | 90.3% | 90.7% | 91.3% | 91.0% | 90.9% | 91.0% | 91.1% | 91.7% | 92.3% | 92.2% | 92.2% | 92.6% | 93.3% | 93.9% | |
| \$150,001 - \$200,000 | 96.4% | 96.0% | 96.2% | 96.3% | 96.3% | 96.2% | 96.0% | 96.3% | 96.4% | 96.6% | 96.4% | 96.3% | 95.9% | 96.4% | 96.3% | 96.5% | 96.3% | 96.4% | 96.8% | 96.6% | 96.2% | 95.8% | 96.0% | 96.1% | |
| \$200,001 - \$250,000 | 96.6% | 96.4% | 96.4% | 96.8% | 97.1% | 97.2% | 97.3% | 97.2% | 96.9% | 97.0% | 97.1% | 96.9% | 97.1% | 97.0% | 97.1% | 97.1% | 97.1% | 97.0% | 96.8% | 96.7% | 96.9% | 96.8% | 96.8% | 96.8% | |
| \$250,001 - \$300,000 | 98.0% | 98.1% | 98.1% | 98.1% | 98.3% | 98.5% | 98.5% | 98.5% | 98.6% | 98.8% | 98.6% | 98.4% | 98.3% | 98.2% | 98.2% | 98.1% | 98.0% | 97.9% | 97.8% | 97.8% | 97.6% | 97.7% | 97.7% | 97.7% | |
| \$300,001 - \$375,000 | 98.1% | 98.2% | 98.1% | 98.1% | 98.0% | 98.3% | 98.5% | 98.3% | 98.7% | 98.8% | 99.0% | 98.8% | 99.3% | 99.3% | 99.2% | 99.3% | 99.2% | 99.4% | 99.5% | 99.4% | 99.4% | 99.2% | 98.9% | 98.6% | |
| \$375,001 - \$475,000 | 98.8% | 98.8% | 98.7% | 98.7% | 98.6% | 98.5% | 98.7% | 98.8% | 99.1% | 99.1% | 99.0% | 98.7% | 98.6% | 98.7% | 98.6% | 98.7% | 98.6% | 98.7% | 98.8% | 98.8% | 98.8% | 98.6% | 98.6% | 98.5% | 98.5% |
| \$475,001 - \$700,000 | 98.0% | 98.0% | 98.0% | 98.0% | 98.3% | 98.4% | 98.3% | 98.3% | 98.3% | 98.4% | 98.7% | 98.7% | 98.8% | 98.7% | 98.7% | 98.7% | 98.7% | 98.7% | 98.7% | 98.7% | 98.7% | 98.7% | 98.7% | 98.7% | 98.7% |
| \$700,001 and above | 96.0% | 95.2% | 95.1% | 95.3% | 95.1% | 94.9% | 94.9% | 94.9% | 94.8% | 94.5% | 94.0% | 94.4% | 94.6% | 95.5% | 95.7% | 95.4% | 95.7% | 95.8% | 95.8% | 95.8% | 95.8% | 95.7% | 95.8% | 96.1% | 96.6% |
| All Condos | 98.7% | 98.6% | 98.7% | 98.9% | 98.6% | 98.8% | 98.8% | 98.8% | 98.8% | 98.9% | 98.8% | 98.8% | 98.8% | 98.8% | 98.7% | 98.7% | 98.6% | 98.8% | 98.8% | 98.8% | 98.9% | 98.8% | 98.7% | 98.7% | 98.6% |

SOURCE: Honolulu Board of REALTORS®, compiled from MLS data.

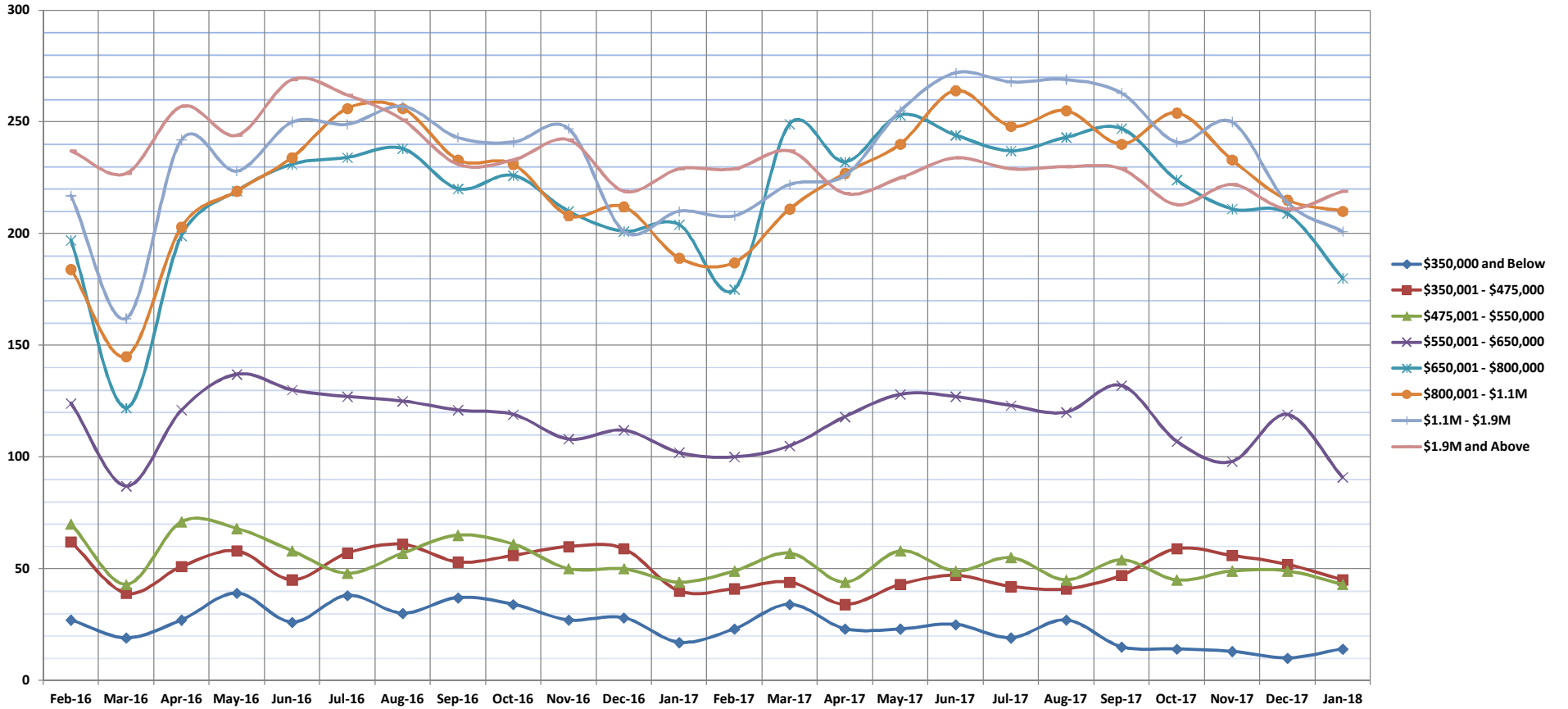


Inventory of Homes for Sale

Jan-18

Single Family Homes: Monthly, by Price Range

(The number of properties available for sale in active status at the end of a given month.)



| | Feb-16 | Mar-16 | Apr-16 | May-16 | Jun-16 | Jul-16 | Aug-16 | Sep-16 | Oct-16 | Nov-16 | Dec-16 | Jan-17 | Feb-17 | Mar-17 | Apr-17 | May-17 | Jun-17 | Jul-17 | Aug-17 | Sep-17 | Oct-17 | Nov-17 | Dec-17 | Jan-18 |
|-------------------------|--------|--------|--------|--------|--------|--------|--------|--------|--------|--------|--------|--------|--------|--------|--------|--------|--------|--------|--------|--------|--------|--------|--------|--------|
| \$350,000 and Below | 27 | 19 | 27 | 39 | 26 | 38 | 30 | 37 | 34 | 27 | 28 | 17 | 23 | 34 | 23 | 23 | 25 | 19 | 27 | 15 | 14 | 13 | 10 | 14 |
| \$350,001 - \$475,000 | 62 | 39 | 51 | 58 | 45 | 57 | 61 | 53 | 56 | 60 | 59 | 40 | 41 | 44 | 34 | 43 | 47 | 42 | 41 | 47 | 59 | 56 | 52 | 45 |
| \$475,001 - \$550,000 | 70 | 43 | 71 | 68 | 58 | 48 | 57 | 65 | 61 | 50 | 50 | 44 | 49 | 57 | 44 | 58 | 49 | 55 | 45 | 54 | 45 | 49 | 49 | 43 |
| \$550,001 - \$650,000 | 124 | 87 | 121 | 137 | 130 | 127 | 125 | 121 | 119 | 108 | 112 | 102 | 100 | 105 | 118 | 128 | 127 | 123 | 120 | 132 | 107 | 98 | 119 | 91 |
| \$650,001 - \$800,000 | 197 | 122 | 199 | 219 | 231 | 234 | 238 | 220 | 226 | 210 | 201 | 204 | 175 | 249 | 232 | 253 | 244 | 237 | 243 | 247 | 224 | 211 | 209 | 180 |
| \$800,001 - \$1.1M | 184 | 145 | 203 | 219 | 234 | 256 | 256 | 233 | 231 | 208 | 212 | 189 | 187 | 211 | 227 | 240 | 264 | 248 | 255 | 240 | 254 | 233 | 215 | 210 |
| \$1.1M - \$1.9M | 217 | 162 | 242 | 228 | 250 | 249 | 257 | 243 | 241 | 247 | 201 | 210 | 208 | 222 | 226 | 255 | 272 | 268 | 269 | 263 | 241 | 250 | 214 | 201 |
| \$1.9M and Above | 237 | 227 | 257 | 244 | 269 | 262 | 251 | 231 | 233 | 242 | 219 | 229 | 229 | 237 | 218 | 225 | 234 | 229 | 230 | 229 | 213 | 222 | 211 | 219 |
| All Single Family Homes | 1118 | 844 | 1171 | 1212 | 1243 | 1271 | 1275 | 1203 | 1201 | 1152 | 1082 | 1035 | 1012 | 1159 | 1112 | 1225 | 1262 | 1221 | 1230 | 1227 | 1157 | 1132 | 1079 | 1003 |

SOURCE: Honolulu Board of REALTORS®, compiled from MLS data.

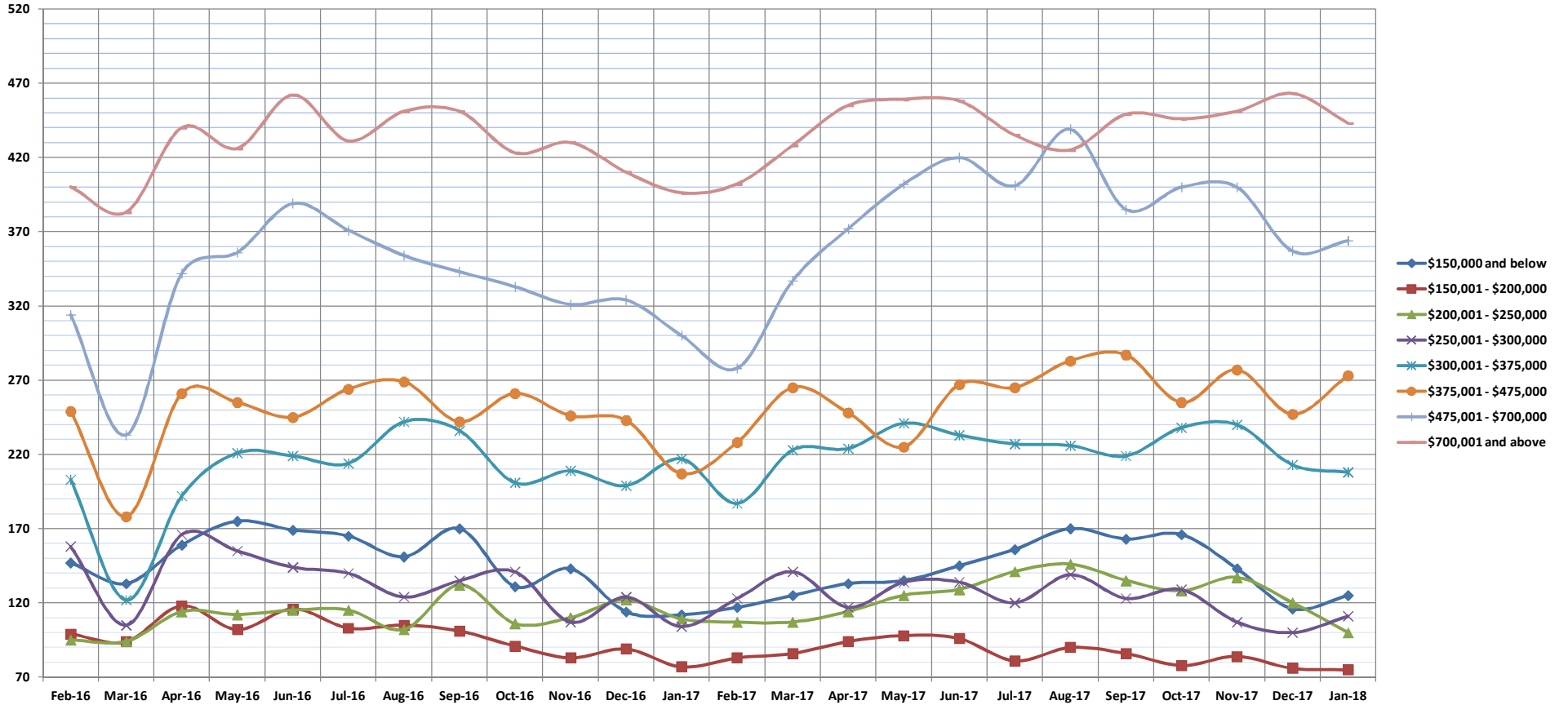


Inventory of Homes for Sale

Jan-18

Condos: Monthly, by Price Range

(The number of properties available for sale in active status at the end of a given month.)



| | Feb-16 | Mar-16 | Apr-16 | May-16 | Jun-16 | Jul-16 | Aug-16 | Sep-16 | Oct-16 | Nov-16 | Dec-16 | Jan-17 | Feb-17 | Mar-17 | Apr-17 | May-17 | Jun-17 | Jul-17 | Aug-17 | Sep-17 | Oct-17 | Nov-17 | Dec-17 | Jan-18 |
|-----------------------|--------|--------|--------|--------|--------|--------|--------|--------|--------|--------|--------|--------|--------|--------|--------|--------|--------|--------|--------|--------|--------|--------|--------|--------|
| \$150,000 and below | 147 | 133 | 159 | 175 | 169 | 165 | 151 | 170 | 131 | 143 | 114 | 112 | 117 | 125 | 133 | 135 | 145 | 156 | 170 | 163 | 166 | 143 | 116 | 125 |
| \$150,001 - \$200,000 | 99 | 94 | 118 | 102 | 116 | 103 | 105 | 101 | 91 | 83 | 89 | 77 | 83 | 86 | 94 | 98 | 96 | 81 | 90 | 86 | 78 | 84 | 76 | 75 |
| \$200,001 - \$250,000 | 95 | 94 | 114 | 112 | 115 | 115 | 102 | 132 | 106 | 110 | 122 | 109 | 107 | 107 | 114 | 125 | 129 | 141 | 146 | 135 | 128 | 137 | 120 | 100 |
| \$250,001 - \$300,000 | 158 | 105 | 166 | 155 | 144 | 140 | 124 | 135 | 141 | 107 | 124 | 104 | 123 | 141 | 117 | 134 | 134 | 120 | 139 | 123 | 129 | 107 | 100 | 111 |
| \$300,001 - \$375,000 | 203 | 122 | 192 | 221 | 219 | 214 | 242 | 236 | 201 | 209 | 199 | 217 | 187 | 223 | 224 | 241 | 233 | 227 | 226 | 219 | 238 | 240 | 213 | 208 |
| \$375,001 - \$475,000 | 249 | 178 | 261 | 255 | 245 | 264 | 269 | 242 | 261 | 246 | 243 | 207 | 228 | 265 | 248 | 225 | 267 | 265 | 283 | 287 | 255 | 277 | 247 | 273 |
| \$475,001 - \$700,000 | 314 | 233 | 342 | 356 | 389 | 371 | 354 | 343 | 333 | 321 | 324 | 300 | 278 | 337 | 372 | 402 | 420 | 401 | 439 | 385 | 400 | 400 | 357 | 364 |
| \$700,001 and above | 400 | 383 | 440 | 426 | 462 | 431 | 451 | 451 | 423 | 430 | 410 | 396 | 402 | 428 | 455 | 459 | 458 | 435 | 425 | 449 | 446 | 451 | 463 | 443 |
| All Condos | 1665 | 1342 | 1792 | 1802 | 1859 | 1803 | 1798 | 1810 | 1687 | 1649 | 1625 | 1522 | 1525 | 1712 | 1757 | 1849 | 1882 | 1826 | 1918 | 1847 | 1840 | 1839 | 1692 | 1699 |

SOURCE: Honolulu Board of REALTORS®, compiled from MLS data.

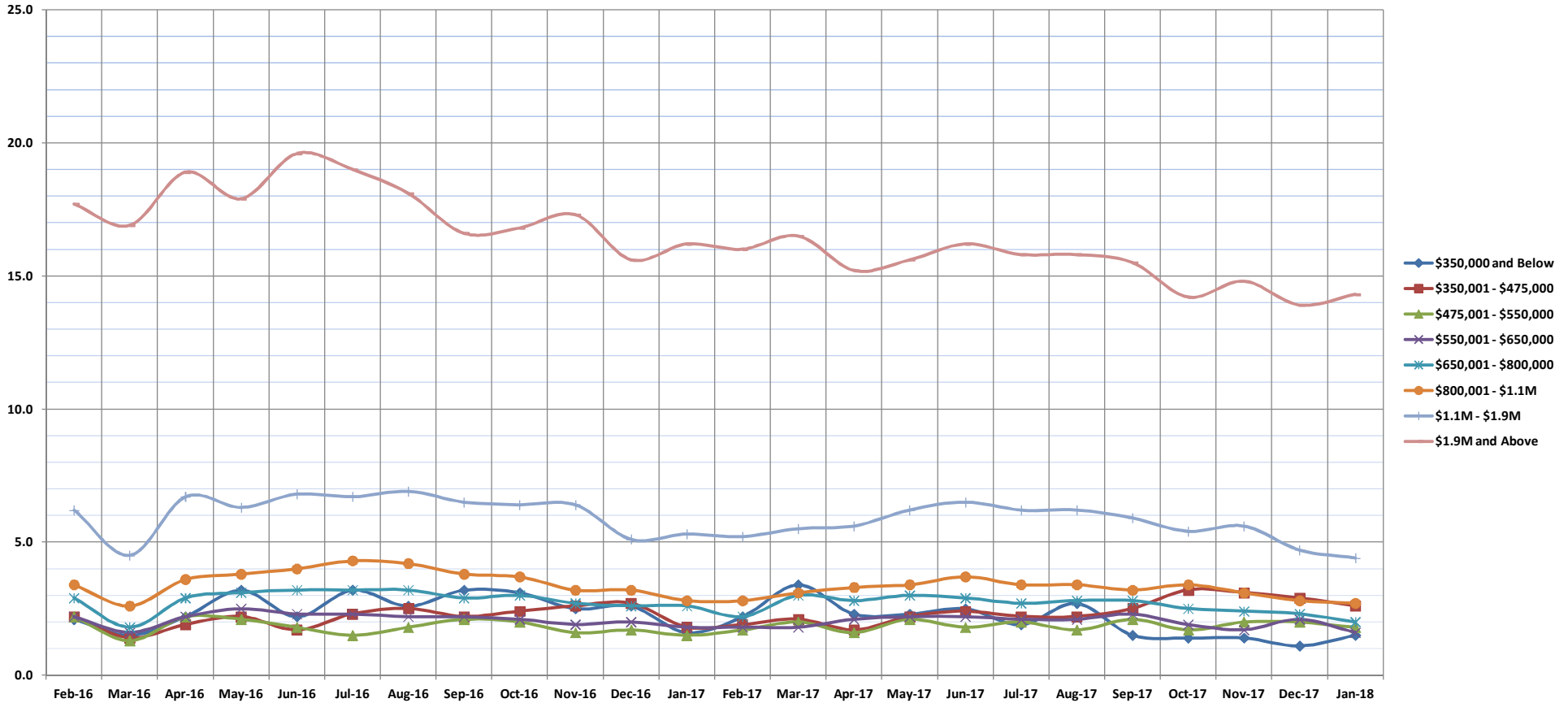


Months Supply of Inventory

Jan-18

Single Family Homes: Monthly, by Price Range

(Compares the number of active listings available to the average monthly pending sales from the last 12 months.)



| | Feb-16 | Mar-16 | Apr-16 | May-16 | Jun-16 | Jul-16 | Aug-16 | Sep-16 | Oct-16 | Nov-16 | Dec-16 | Jan-17 | Feb-17 | Mar-17 | Apr-17 | May-17 | Jun-17 | Jul-17 | Aug-17 | Sep-17 | Oct-17 | Nov-17 | Dec-17 | Jan-18 |
|-------------------------|--------|--------|--------|--------|--------|--------|--------|--------|--------|--------|--------|--------|--------|--------|--------|--------|--------|--------|--------|--------|--------|--------|--------|--------|
| \$350,000 and Below | 2.1 | 1.5 | 2.2 | 3.2 | 2.2 | 3.2 | 2.6 | 3.2 | 3.1 | 2.5 | 2.6 | 1.6 | 2.2 | 3.4 | 2.3 | 2.3 | 2.5 | 1.9 | 2.7 | 1.5 | 1.4 | 1.4 | 1.1 | 1.5 |
| \$350,001 - \$475,000 | 2.2 | 1.4 | 1.9 | 2.2 | 1.7 | 2.3 | 2.5 | 2.2 | 2.4 | 2.6 | 2.7 | 1.8 | 1.9 | 2.1 | 1.7 | 2.2 | 2.4 | 2.2 | 2.2 | 2.5 | 3.2 | 3.1 | 2.9 | 2.6 |
| \$475,001 - \$550,000 | 2.2 | 1.3 | 2.2 | 2.1 | 1.8 | 1.5 | 1.8 | 2.1 | 2.0 | 1.6 | 1.7 | 1.5 | 1.7 | 2.0 | 1.6 | 2.1 | 1.8 | 2.0 | 1.7 | 2.1 | 1.7 | 2.0 | 2.0 | 1.8 |
| \$550,001 - \$650,000 | 2.2 | 1.6 | 2.2 | 2.5 | 2.3 | 2.3 | 2.2 | 2.2 | 2.1 | 1.9 | 2.0 | 1.8 | 1.8 | 1.8 | 2.1 | 2.2 | 2.2 | 2.1 | 2.1 | 2.3 | 1.9 | 1.7 | 2.1 | 1.6 |
| \$650,001 - \$800,000 | 2.9 | 1.8 | 2.9 | 3.1 | 3.2 | 3.2 | 3.2 | 2.9 | 3.0 | 2.7 | 2.6 | 2.6 | 2.2 | 3.0 | 2.8 | 3.0 | 2.9 | 2.7 | 2.8 | 2.8 | 2.5 | 2.4 | 2.3 | 2.0 |
| \$800,001 - \$1.1M | 3.4 | 2.6 | 3.6 | 3.8 | 4.0 | 4.3 | 4.2 | 3.8 | 3.7 | 3.2 | 3.2 | 2.8 | 2.8 | 3.1 | 3.3 | 3.4 | 3.7 | 3.4 | 3.4 | 3.2 | 3.4 | 3.1 | 2.8 | 2.7 |
| \$1.1M - \$1.9M | 6.2 | 4.5 | 6.7 | 6.3 | 6.8 | 6.7 | 6.9 | 6.5 | 6.4 | 6.4 | 5.1 | 5.3 | 5.2 | 5.5 | 5.6 | 6.2 | 6.5 | 6.2 | 6.2 | 5.9 | 5.4 | 5.6 | 4.7 | 4.4 |
| \$1.9M and Above | 17.7 | 16.9 | 18.9 | 17.9 | 19.6 | 19.0 | 18.1 | 16.6 | 16.8 | 17.3 | 15.6 | 16.2 | 16.0 | 16.5 | 15.2 | 15.6 | 16.2 | 15.8 | 15.8 | 15.5 | 14.2 | 14.8 | 13.9 | 14.3 |
| All Single Family Homes | 3.7 | 2.8 | 3.9 | 4.0 | 4.0 | 4.1 | 4.1 | 3.9 | 3.9 | 3.6 | 3.4 | 3.3 | 3.2 | 3.6 | 3.5 | 3.8 | 3.9 | 3.7 | 3.7 | 3.7 | 3.4 | 3.4 | 3.2 | 3.0 |

SOURCE: Honolulu Board of REALTORS®, compiled from MLS data.

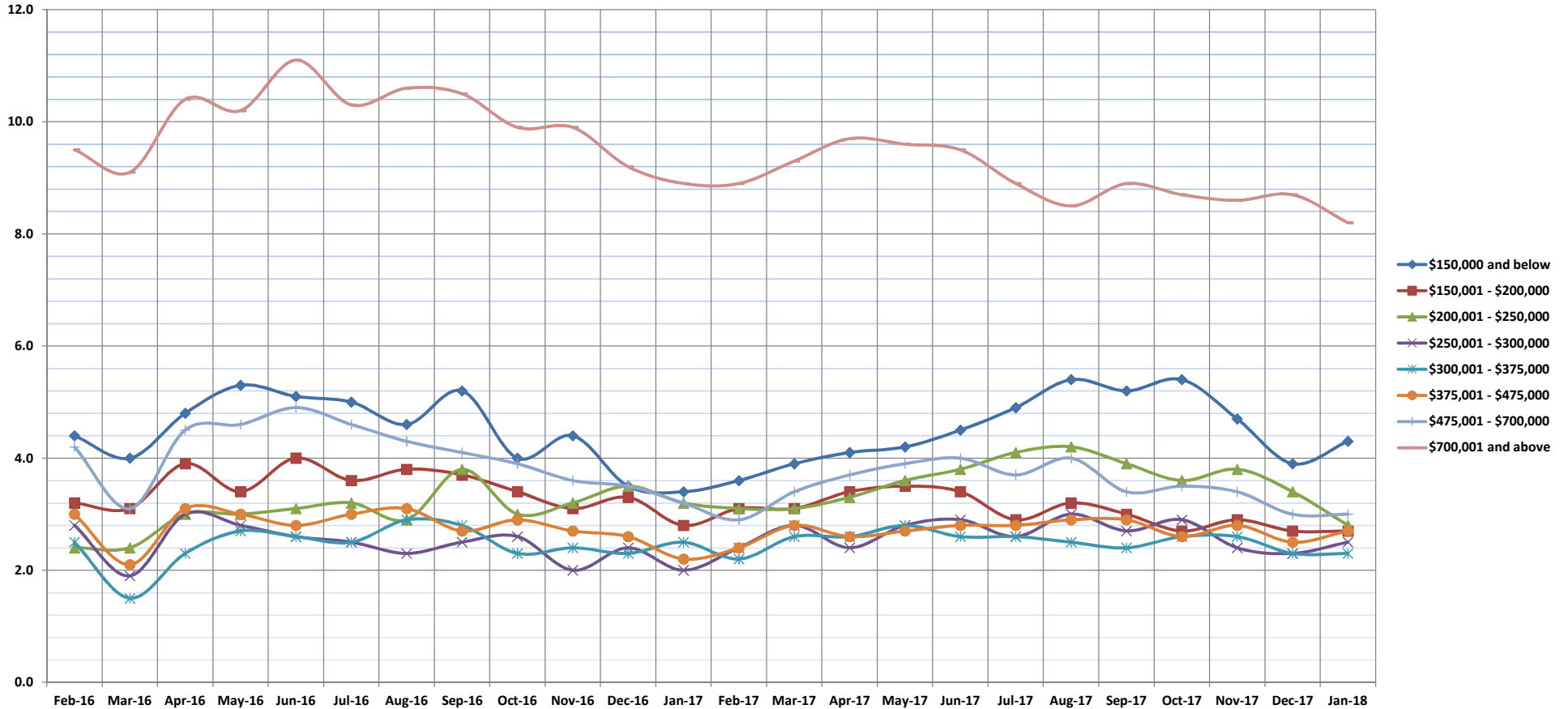


Months Supply of Inventory

Jan-18

Condos: Monthly, by Price Range

(Compares the number of active listings available to the average monthly pending sales from the last 12 months.)



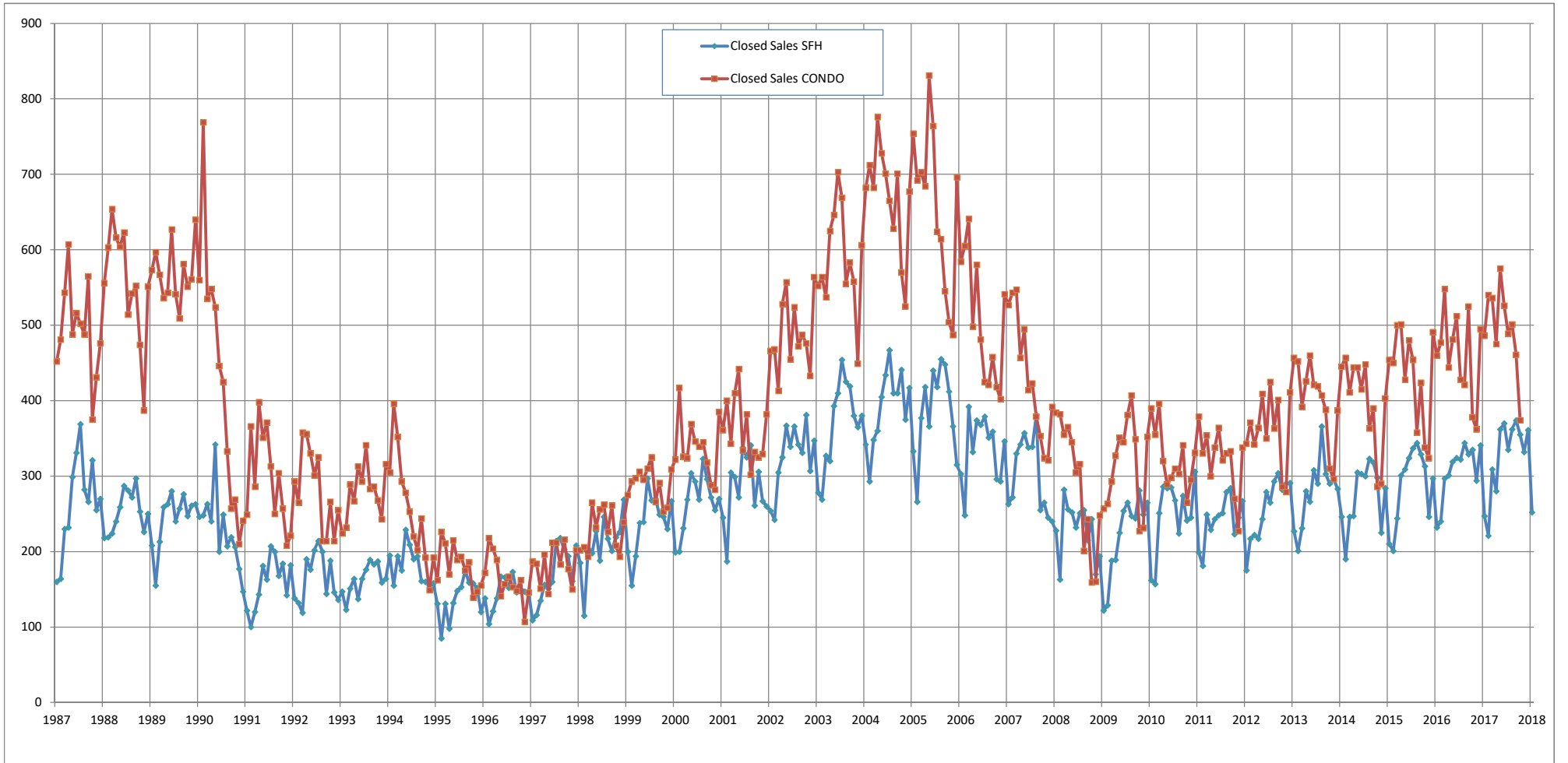
| | Feb-16 | Mar-16 | Apr-16 | May-16 | Jun-16 | Jul-16 | Aug-16 | Sep-16 | Oct-16 | Nov-16 | Dec-16 | Jan-17 | Feb-17 | Mar-17 | Apr-17 | May-17 | Jun-17 | Jul-17 | Aug-17 | Sep-17 | Oct-17 | Nov-17 | Dec-17 | Jan-18 |
|-----------------------|--------|--------|--------|--------|--------|--------|--------|--------|--------|--------|--------|--------|--------|--------|--------|--------|--------|--------|--------|--------|--------|--------|--------|--------|
| \$150,000 and below | 4.4 | 4.0 | 4.8 | 5.3 | 5.1 | 5.0 | 4.6 | 5.2 | 4.0 | 4.4 | 3.5 | 3.4 | 3.6 | 3.9 | 4.1 | 4.2 | 4.5 | 4.9 | 5.4 | 5.2 | 5.4 | 4.7 | 3.9 | 4.3 |
| \$150,001 - \$200,000 | 3.2 | 3.1 | 3.9 | 3.4 | 4.0 | 3.6 | 3.8 | 3.7 | 3.4 | 3.1 | 3.3 | 2.8 | 3.1 | 3.1 | 3.4 | 3.5 | 3.4 | 2.9 | 3.2 | 3.0 | 2.7 | 2.9 | 2.7 | 2.7 |
| \$200,001 - \$250,000 | 2.4 | 2.4 | 3.0 | 3.0 | 3.1 | 3.2 | 2.9 | 3.8 | 3.0 | 3.2 | 3.5 | 3.2 | 3.1 | 3.1 | 3.3 | 3.6 | 3.8 | 4.1 | 4.2 | 3.9 | 3.6 | 3.8 | 3.4 | 2.8 |
| \$250,001 - \$300,000 | 2.8 | 1.9 | 3.0 | 2.8 | 2.6 | 2.5 | 2.3 | 2.5 | 2.6 | 2.0 | 2.4 | 2.0 | 2.4 | 2.8 | 2.4 | 2.8 | 2.9 | 2.6 | 3.0 | 2.7 | 2.9 | 2.4 | 2.3 | 2.5 |
| \$300,001 - \$375,000 | 2.5 | 1.5 | 2.3 | 2.7 | 2.6 | 2.5 | 2.9 | 2.8 | 2.3 | 2.4 | 2.3 | 2.5 | 2.2 | 2.6 | 2.6 | 2.8 | 2.6 | 2.6 | 2.5 | 2.4 | 2.6 | 2.6 | 2.3 | 2.3 |
| \$375,001 - \$475,000 | 3.0 | 2.1 | 3.1 | 3.0 | 2.8 | 3.0 | 3.1 | 2.7 | 2.9 | 2.7 | 2.6 | 2.2 | 2.4 | 2.8 | 2.6 | 2.7 | 2.8 | 2.8 | 2.9 | 2.9 | 2.6 | 2.8 | 2.5 | 2.7 |
| \$475,001 - \$700,000 | 4.2 | 3.1 | 4.5 | 4.6 | 4.9 | 4.6 | 4.3 | 4.1 | 3.9 | 3.6 | 3.5 | 3.2 | 2.9 | 3.4 | 3.7 | 3.9 | 4.0 | 3.7 | 4.0 | 3.4 | 3.5 | 3.4 | 3.0 | 3.0 |
| \$700,001 and above | 9.5 | 9.1 | 10.4 | 10.2 | 11.1 | 10.3 | 10.6 | 10.5 | 9.9 | 9.9 | 9.2 | 8.9 | 8.9 | 9.3 | 9.7 | 9.6 | 9.5 | 8.9 | 8.5 | 8.9 | 8.7 | 8.6 | 8.7 | 8.2 |
| All Condos | 3.8 | 3.0 | 4.0 | 4.1 | 4.2 | 4.0 | 4.0 | 4.0 | 3.7 | 3.6 | 3.5 | 3.3 | 3.3 | 3.7 | 3.7 | 3.9 | 3.9 | 3.8 | 3.9 | 3.8 | 3.7 | 3.7 | 3.4 | 3.4 |

SOURCE: Honolulu Board of REALTORS®, compiled from MLS data.

Closed Sales

Single Family Homes and Condos

OAHU, HAWAII: Jan 1987 to the Present

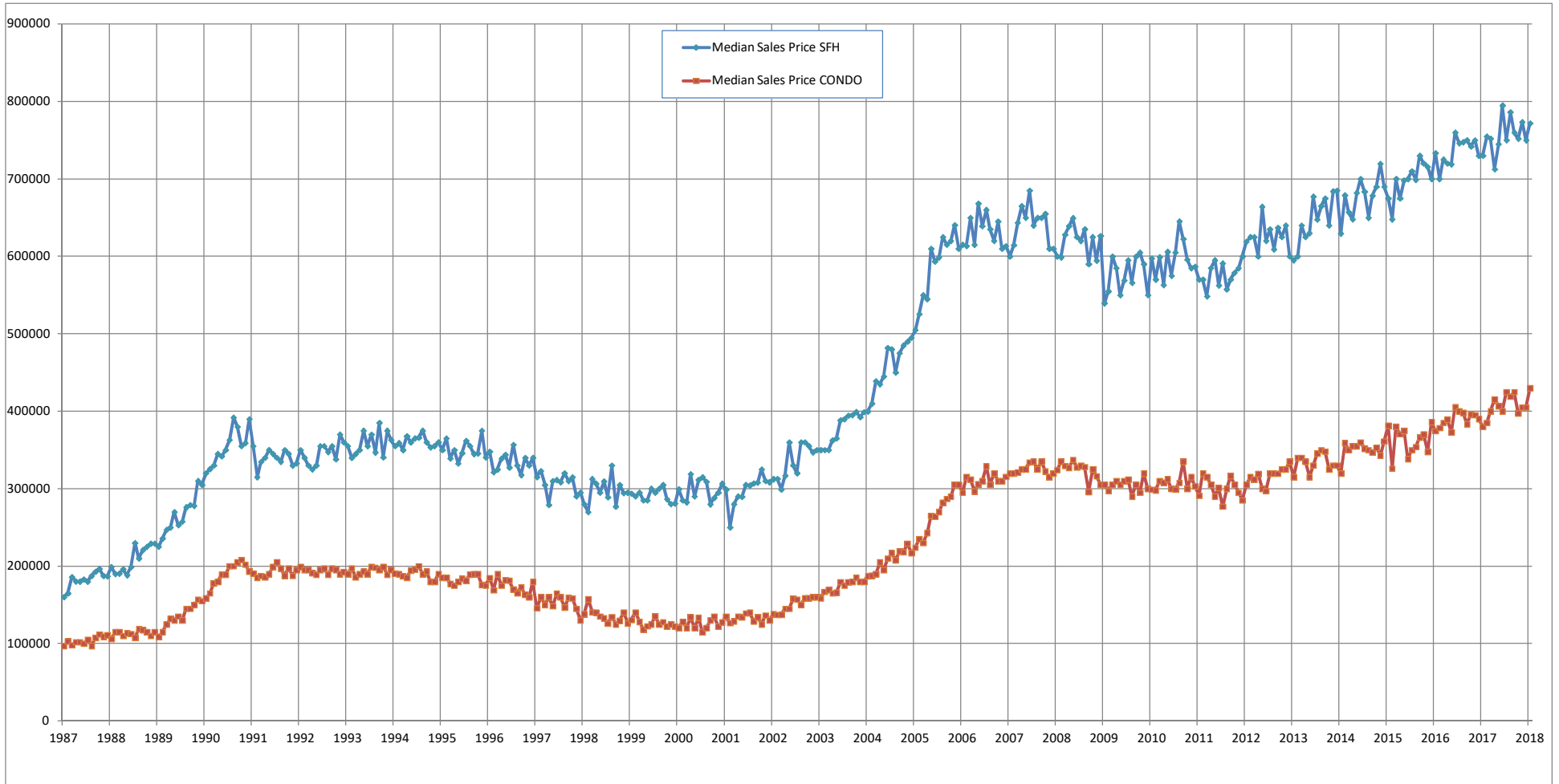


SOURCE: Honolulu Board of REALTORS®, compiled from MLS data.

Median Sales Price

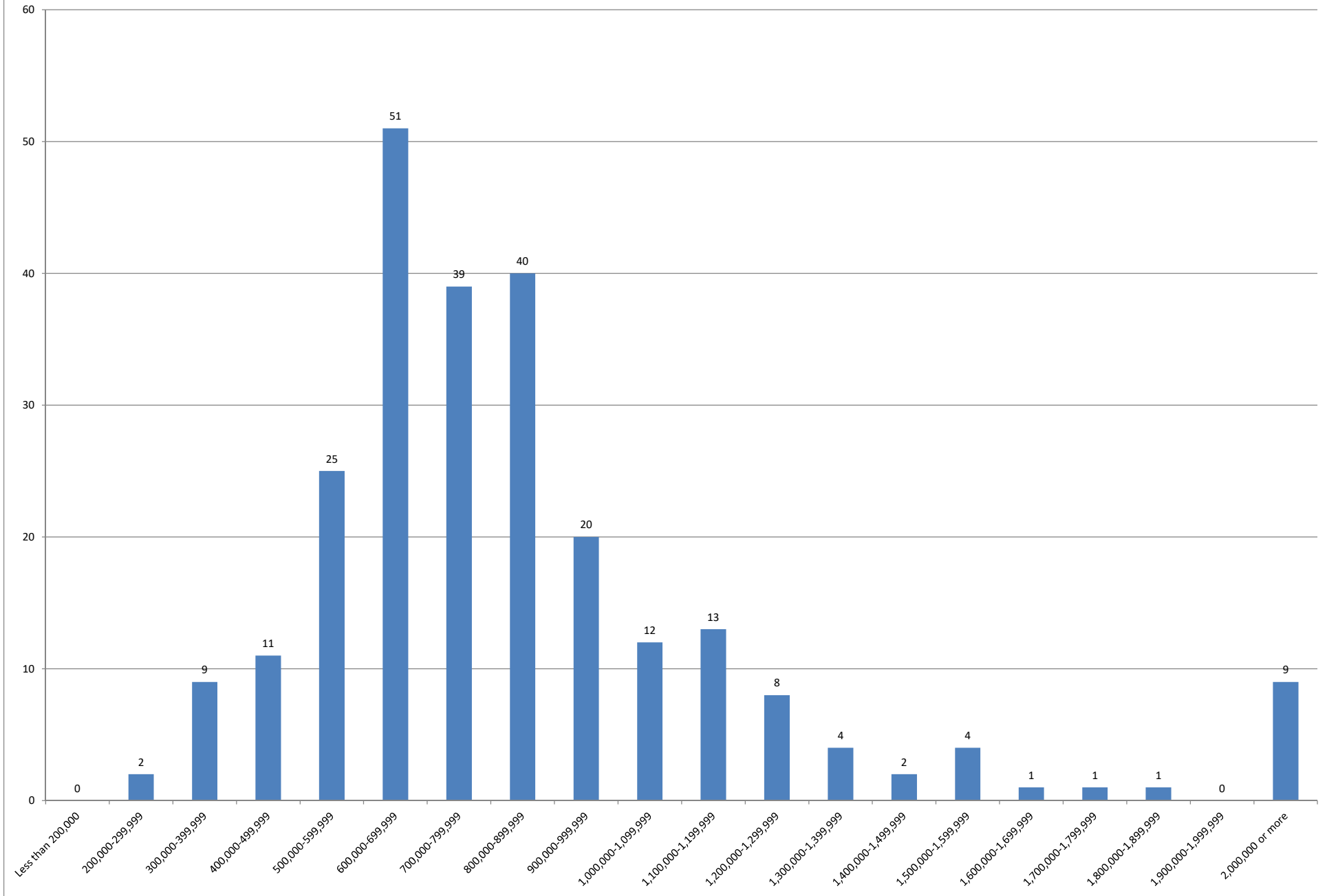
Single Family Homes and Condos

OAHU, HAWAII: Jan 1987 to the Present



SOURCE: Honolulu Board of REALTORS®, compiled from MLS data.

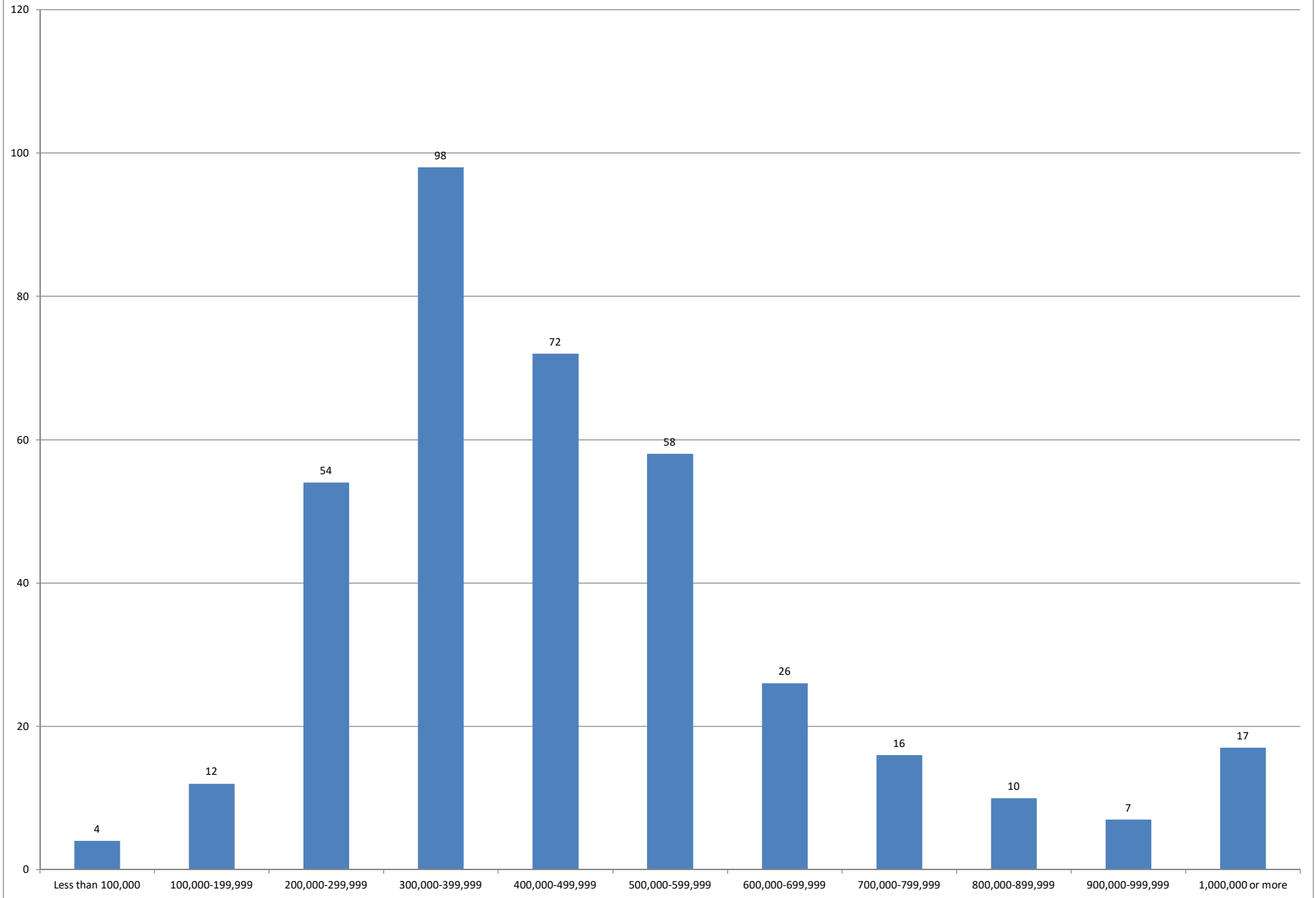
January 2018 Single Family Homes Sold



SOURCE: Honolulu Board of REALTORS®, compiled from MLS data.



January 2018 Condos Sold



SOURCE: Honolulu Board of REALTORS®, compiled from MLS data.

