

# Monthly Housing Statistics

## February 2017



### SINGLE FAMILY HOMES

Median Sales Price	
\$755,000	+7.9%
Closed Sales	
221	-7.9%
Average Sales Price	
\$893,468	+7.6%

### CONDOS

Median Sales Price	
\$385,000	+1.7%
Closed Sales	
362	+11.7%
Average Sales Price	
\$461,275	+6.8%

### INDEX:

<b>Monthly Indicators</b>	<b>2</b>
Closed Sales	3
Median Sales Price	4
Median Days on Market	5
New Listings	6
Pending Sales	7
Months of Inventory	8
Active Listings	9
Average Sales Price	10
% of Original Listing Price Received	11
Active Continue to Show	12
<b>Housing Supply Overview</b>	<b>13</b>
Pending Sales (by price range)	14-15
Median Days on Market (by price range)	16-17
% of list price received (by price range)	18-19
Inventory of Homes (by price range)	20-21
Months Supply of Inventory (price range)	22-23
<b>Historical Graphs</b>	<b>24-25</b>
<b>Price Graphs</b>	<b>26-27</b>

# Monthly Indicators

February 2017

	Single Family Homes					
	Feb-17	Feb-16	%	YTD-17	YTD-16	%
<b>Closed Sales</b>	221	240	-7.9%	468	472	-0.8%
<b>Median Sales Price</b>	\$755,000	\$700,000	7.9%	\$745,000	\$715,000	4.2%
<b>Median Days on Market</b>	21	23	-8.7%	21	22	-4.5%
<b>New Listings</b>	372	414	-10.1%	818	834	-1.9%
<b>Pending Sales</b>	423	350	20.9%	853	691	23.4%
<b>Months of Inventory</b>	2.3	2.7	-14.8%	--	--	--
<b>Active Listings</b>	1,012	1,118	-9.5%	--	--	--
<b>Average Sales Price</b>	\$893,468	\$830,331	7.6%	\$894,992	\$835,632	7.1%
<b>% of Original Listing Price Received</b>	98.3%	99.6%	-1.3%	99.3%	97.9%	1.4%

	Condos					
	Feb-17	Feb-16	%	YTD-17	YTD-16	%
<b>Closed Sales</b>	362	324	11.7%	740	662	11.8%
<b>Median Sales Price</b>	\$385,000	\$378,444	1.7%	\$382,000	\$375,000	1.9%
<b>Median Days on Market</b>	22	23	-4.3%	22	21	4.8%
<b>New Listings</b>	565	605	-6.6%	1,206	1,171	3.0%
<b>Pending Sales</b>	628	500	25.6%	1,247	971	28.4%
<b>Months of Inventory</b>	2.4	2.9	-17.2%	--	--	--
<b>Active Listings</b>	1,525	1,665	-8.4%	--	--	--
<b>Average Sales Price</b>	\$461,275	\$431,976	6.8%	\$454,101	\$425,394	6.7%
<b>% of Original Listing Price Received</b>	98.7%	97.8%	0.9%	98.5%	97.9%	0.6%

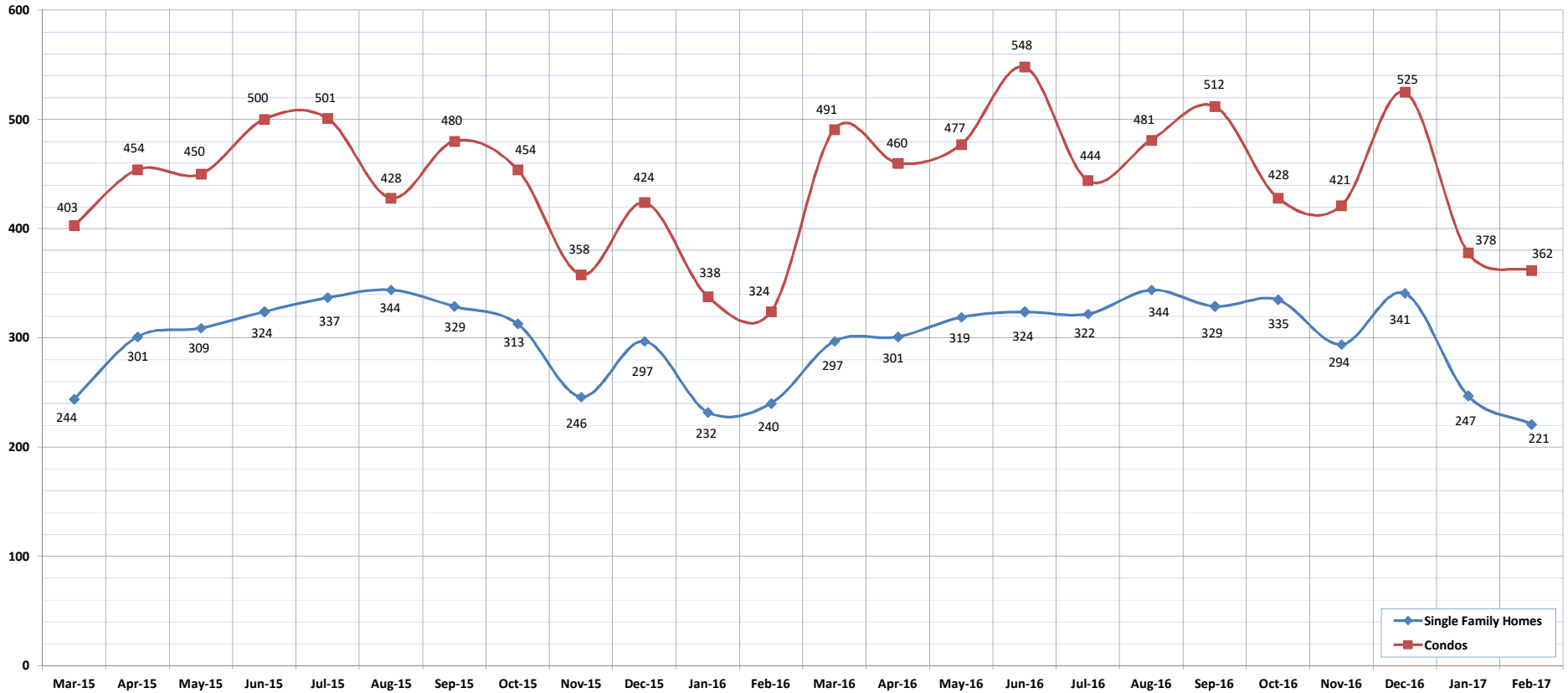
SOURCE: Honolulu Board of REALTORS® , compiled from MLS data.

# Closed Sales

February-17

OAHU, HAWAII

(A count of all properties that have closed in a given month.)



	Mar-15	Apr-15	May-15	Jun-15	Jul-15	Aug-15	Sep-15	Oct-15	Nov-15	Dec-15	Jan-16	Feb-16	Mar-16	Apr-16	May-16	Jun-16	Jul-16	Aug-16	Sep-16	Oct-16	Nov-16	Dec-16	Jan-17	Feb-17
<b>Closed Sales: Single Family Homes</b>	244	301	309	324	337	344	329	313	246	297	232	240	297	301	319	324	322	344	329	335	294	341	247	221
<b>Closed Sales: Condos</b>	403	454	450	500	501	428	480	454	358	424	338	324	491	460	477	548	444	481	512	428	421	525	378	362
<b>Closed Sales: Total</b>	647	755	759	824	838	772	809	767	604	721	570	564	788	761	796	872	766	825	841	763	715	866	625	583

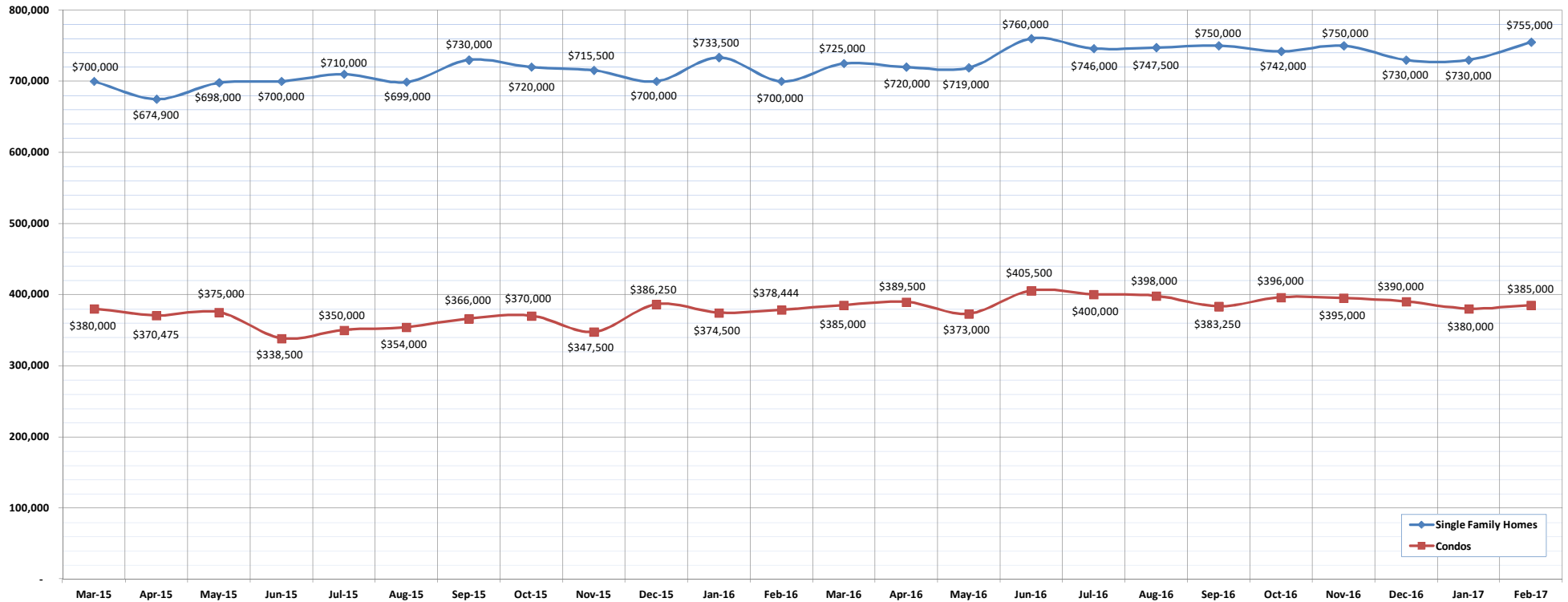
SOURCE: Honolulu Board of REALTORS®, compiled from MLS data.

# Median Sales Price

February-17

OAHU, HAWAII

(The median sales price for all closed properties in a given month.)



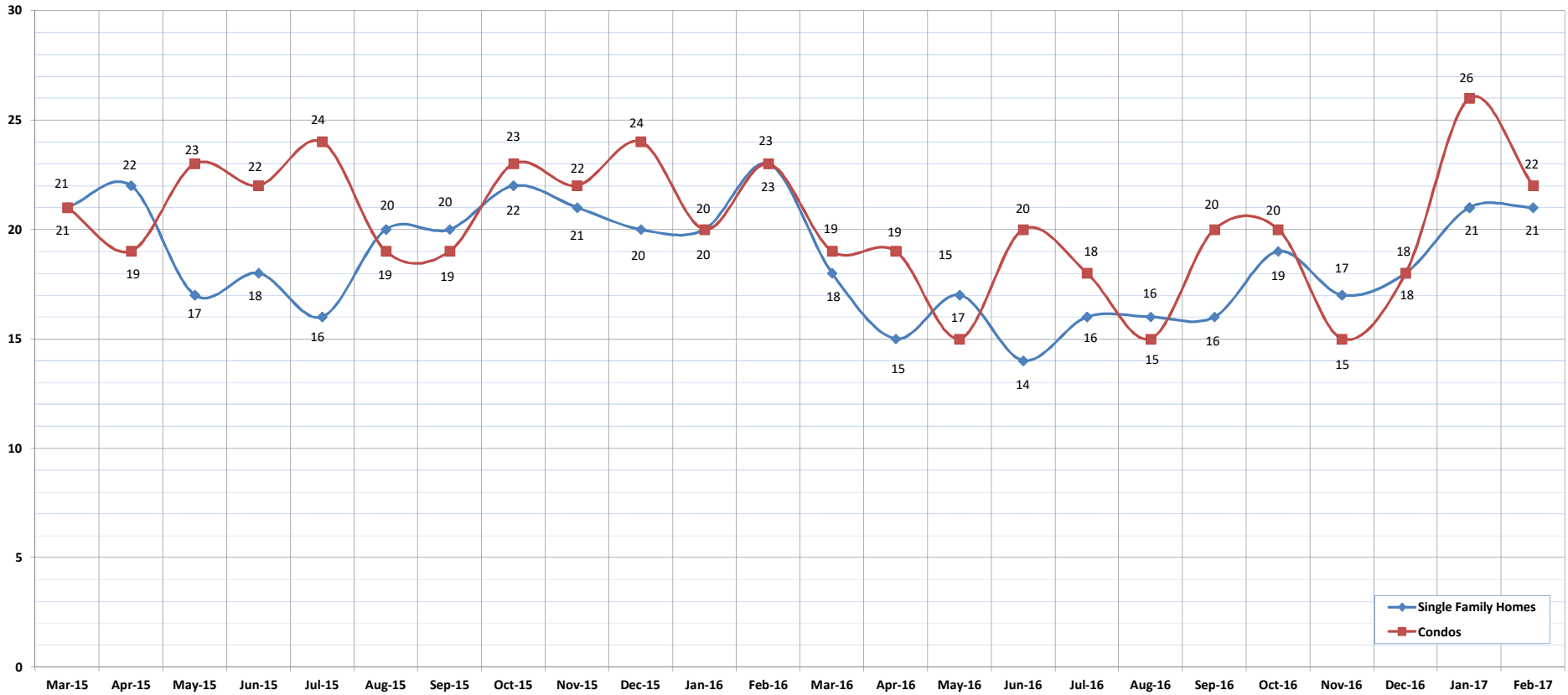
	Mar-15	Apr-15	May-15	Jun-15	Jul-15	Aug-15	Sep-15	Oct-15	Nov-15	Dec-15	Jan-16	Feb-16	Mar-16	Apr-16	May-16	Jun-16	Jul-16	Aug-16	Sep-16	Oct-16	Nov-16	Dec-16	Jan-17	Feb-17
<b>Median Sales Price : SFH</b>	700,000	674,900	698,000	700,000	710,000	699,000	730,000	720,000	715,500	700,000	733,500	700,000	725,000	720,000	719,000	760,000	746,000	747,500	750,000	742,000	750,000	730,000	730,000	755,000
<b>Median Sales Price: Condos</b>	380,000	370,475	375,000	338,500	350,000	354,000	366,000	370,000	347,500	386,250	374,500	378,444	385,000	389,500	373,000	405,500	400,000	398,000	383,250	396,000	395,000	390,000	380,000	385,000

# Median Days on Market

February-17

OAHU, HAWAII

(The median number of days between when a property is first listed and when an offer is accepted.)



	Mar-15	Apr-15	May-15	Jun-15	Jul-15	Aug-15	Sep-15	Oct-15	Nov-15	Dec-15	Jan-16	Feb-16	Mar-16	Apr-16	May-16	Jun-16	Jul-16	Aug-16	Sep-16	Oct-16	Nov-16	Dec-16	Jan-17	Feb-17
Median Days on Market: SFH	21	22	17	18	16	20	20	22	21	20	20	23	18	15	17	14	16	16	16	19	17	18	21	21
Median Days on Market: Condos	21	19	23	22	24	19	19	23	22	24	20	23	19	19	15	20	18	15	20	20	15	18	26	22

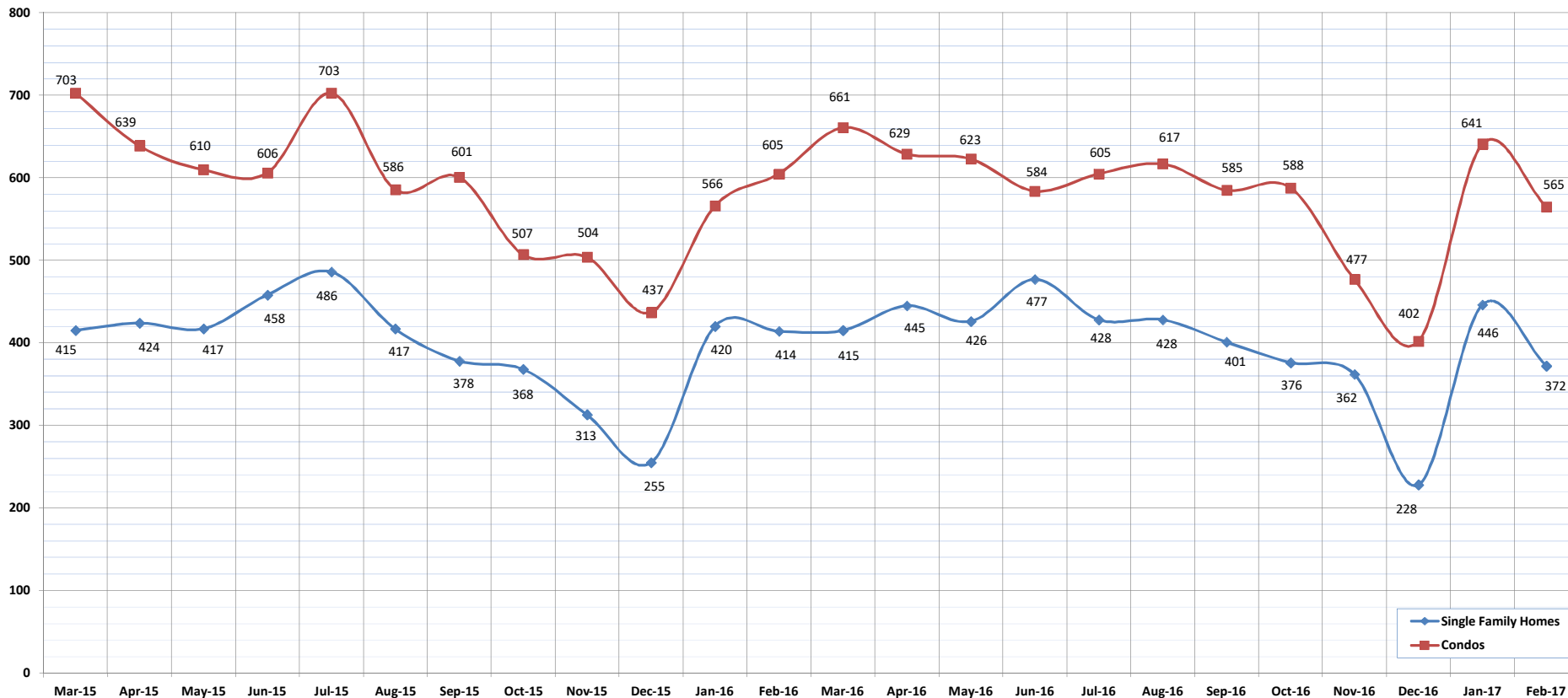
SOURCE: Honolulu Board of REALTORS®, compiled from MLS data.

# New Listings

February-17

OAHU, HAWAII

(A count of the properties that have been newly listed on the market in a given month.)



	Mar-15	Apr-15	May-15	Jun-15	Jul-15	Aug-15	Sep-15	Oct-15	Nov-15	Dec-15	Jan-16	Feb-16	Mar-16	Apr-16	May-16	Jun-16	Jul-16	Aug-16	Sep-16	Oct-16	Nov-16	Dec-16	Jan-17	Feb-17
<b>New Listings: Single Family Homes</b>	415	424	417	458	486	417	378	368	313	255	420	414	415	445	426	477	428	428	401	376	362	228	446	372
<b>New Listings: Condos</b>	703	639	610	606	703	586	601	507	504	437	566	605	661	629	623	584	605	617	585	588	477	402	641	565
<b>New Listings: Total</b>	1118	1063	1027	1064	1189	1003	979	875	817	692	986	1019	1076	1074	1049	1061	1033	1045	986	964	839	630	1087	937

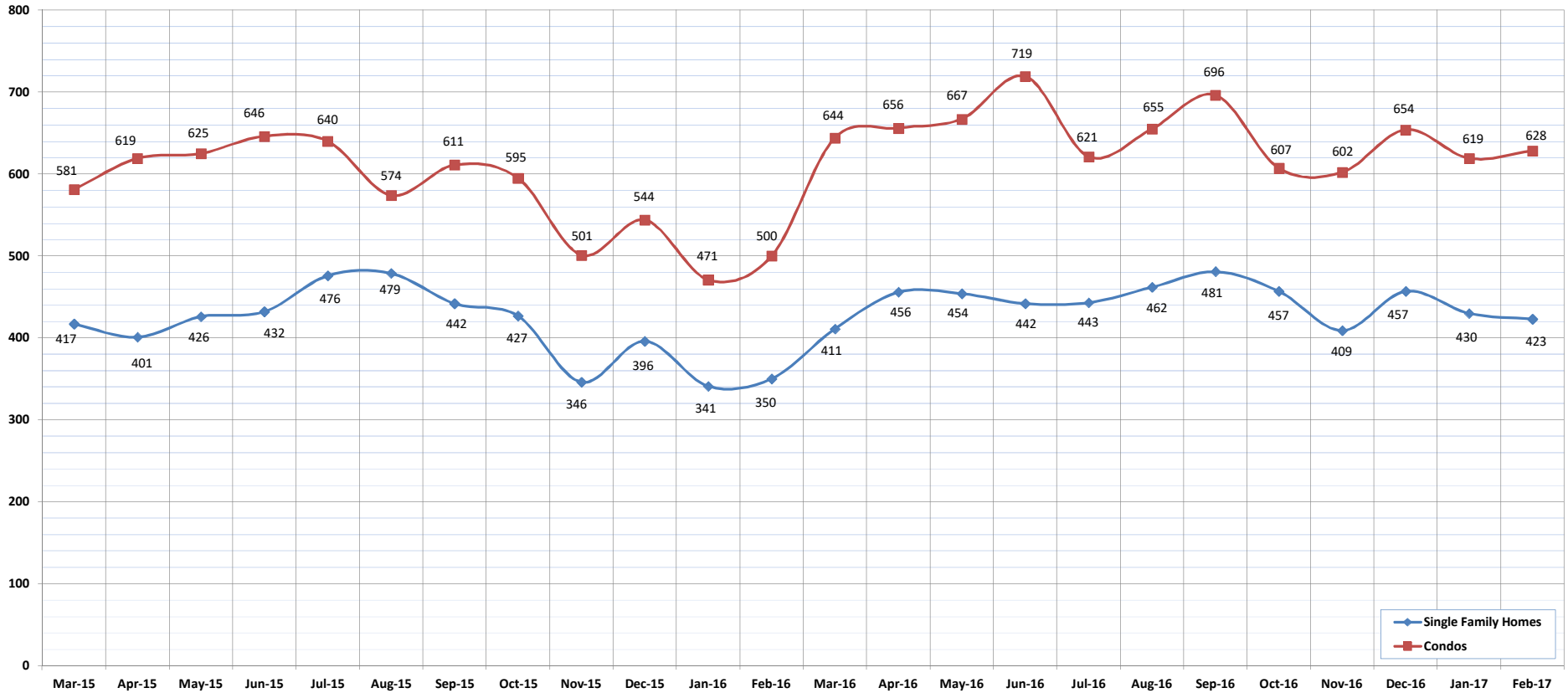
SOURCE: Honolulu Board of REALTORS®, compiled from MLS data.

# Pending Sales

February-17

OAHU, HAWAII

(A count of the properties that have offers accepted on them in a given month.)



	Mar-15	Apr-15	May-15	Jun-15	Jul-15	Aug-15	Sep-15	Oct-15	Nov-15	Dec-15	Jan-16	Feb-16	Mar-16	Apr-16	May-16	Jun-16	Jul-16	Aug-16	Sep-16	Oct-16	Nov-16	Dec-16	Jan-17	Feb-17
<b>Pending Sales: Single Family Homes</b>	417	401	426	432	476	479	442	427	346	396	341	350	411	456	454	442	443	462	481	457	409	457	430	423
<b>Pending Sales: Condos</b>	581	619	625	646	640	574	611	595	501	544	471	500	644	656	667	719	621	655	696	607	602	654	619	628
<b>Pending Sales: Total</b>	998	1020	1051	1078	1116	1053	1053	1022	847	940	812	850	1055	1112	1121	1161	1064	1117	1177	1064	1011	1111	1049	1051

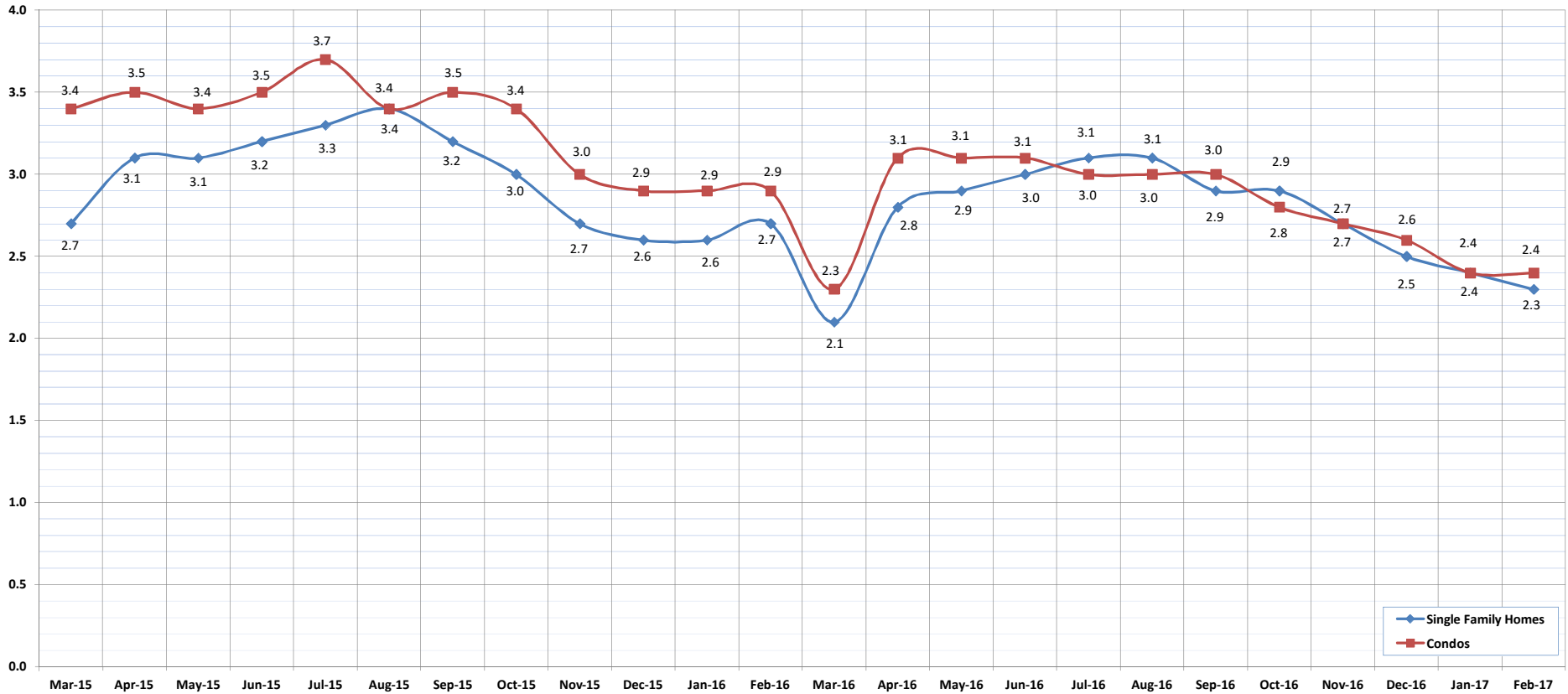
SOURCE: Honolulu Board of REALTORS®, compiled from MLS data.

# Months of Inventory

February-17

OAHU, HAWAII

(Compares the number of active listings available to the average monthly pending sales.)



	Mar-15	Apr-15	May-15	Jun-15	Jul-15	Aug-15	Sep-15	Oct-15	Nov-15	Dec-15	Jan-16	Feb-16	Mar-16	Apr-16	May-16	Jun-16	Jul-16	Aug-16	Sep-16	Oct-16	Nov-16	Dec-16	Jan-17	Feb-17
Month of Inventory : SFH	2.7	3.1	3.1	3.2	3.3	3.4	3.2	3.0	2.7	2.6	2.6	2.7	2.1	2.8	2.9	3.0	3.1	3.1	2.9	2.9	2.7	2.5	2.4	2.3
Months of Inventory: Condos	3.4	3.5	3.4	3.5	3.7	3.4	3.5	3.4	3.0	2.9	2.9	2.9	2.3	3.1	3.1	3.1	3.0	3.0	3.0	2.8	2.7	2.6	2.4	2.4

SOURCE: Honolulu Board of REALTORS®, compiled from MLS data.

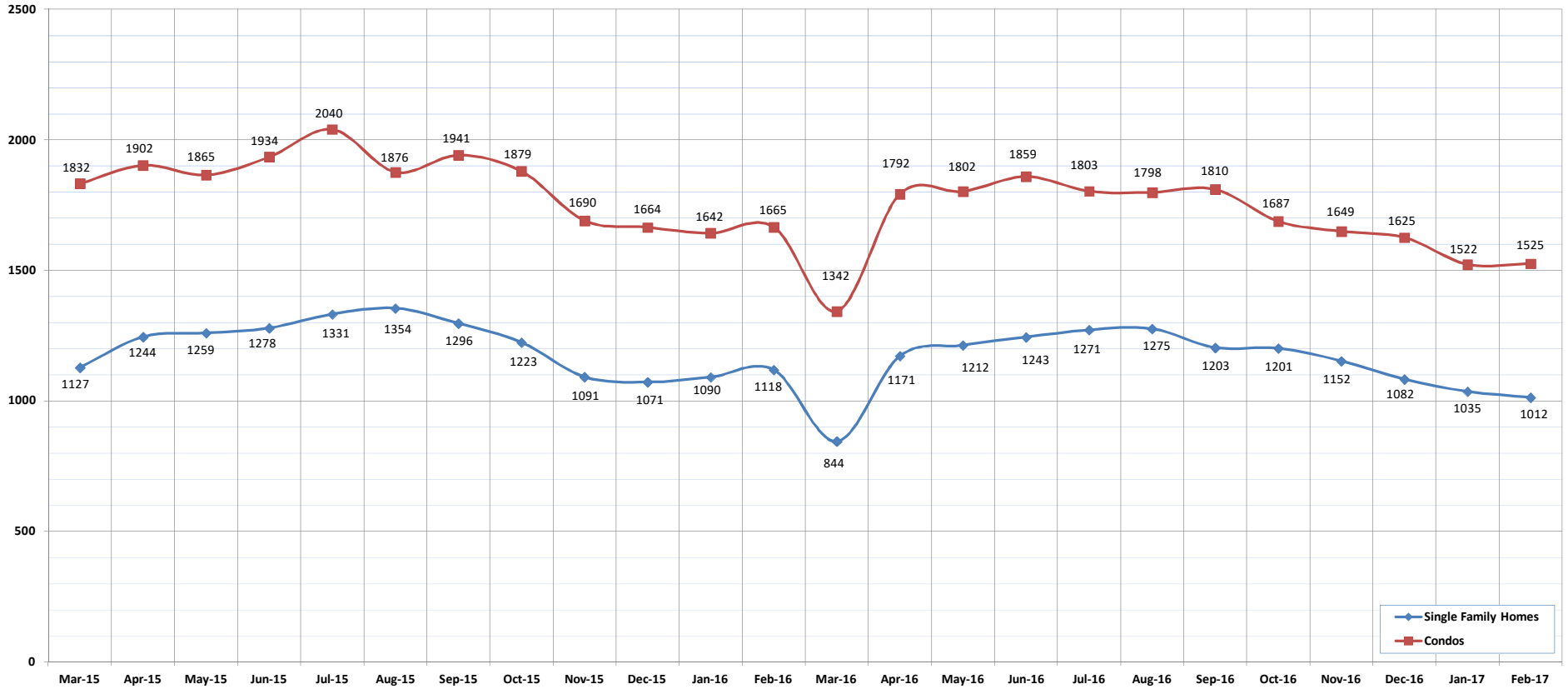




# Active Listings

February-17  
OAHU, HAWAII

(The number of properties available for purchase during a given month.)



	Mar-15	Apr-15	May-15	Jun-15	Jul-15	Aug-15	Sep-15	Oct-15	Nov-15	Dec-15	Jan-16	Feb-16	Mar-16	Apr-16	May-16	Jun-16	Jul-16	Aug-16	Sep-16	Oct-16	Nov-16	Dec-16	Jan-17	Feb-17
Active Listings: Single Family Homes	1127	1244	1259	1278	1331	1354	1296	1223	1091	1071	1090	1118	844	1171	1212	1243	1271	1275	1203	1201	1152	1082	1035	1012
Active Listings: Condos	1832	1902	1865	1934	2040	1876	1941	1879	1690	1664	1642	1665	1342	1792	1802	1859	1803	1798	1810	1687	1649	1625	1522	1525
Active Listings: Total	2959	3146	3124	3212	3371	3230	3237	3102	2781	2735	2732	2783	2186	2963	3014	3102	3074	3073	3013	2888	2801	2707	2557	2537

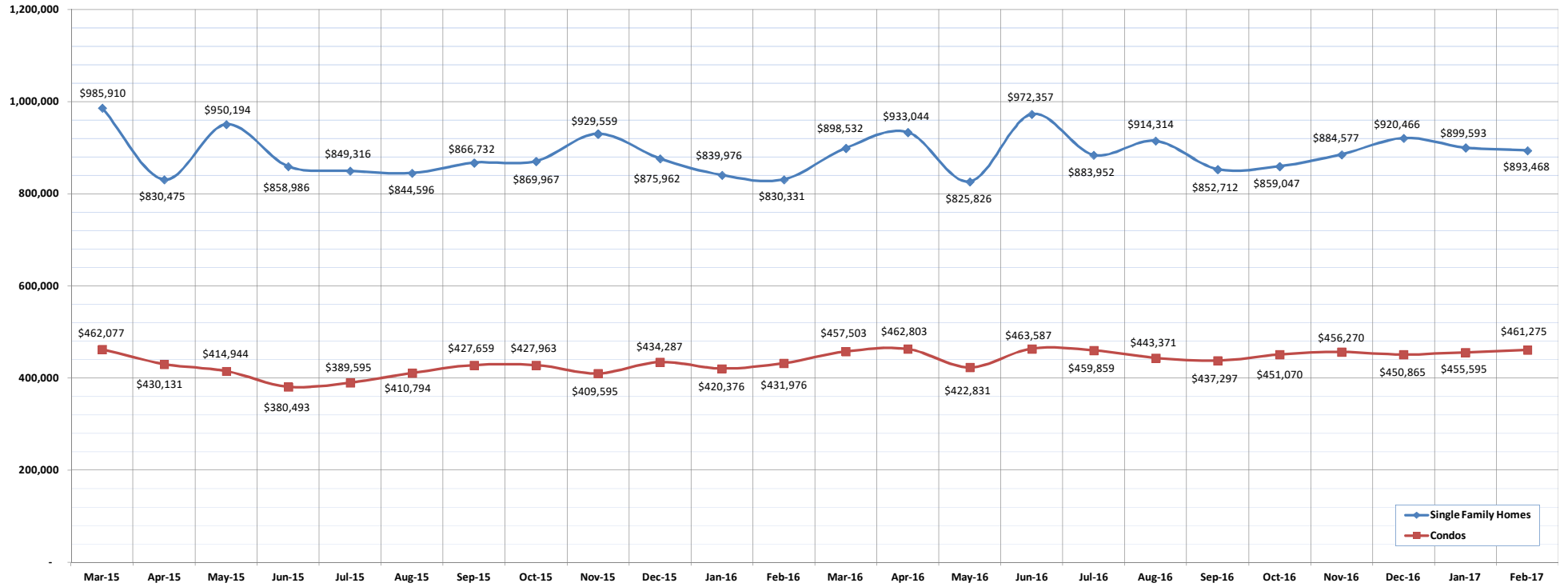
SOURCE: Honolulu Board of REALTORS®, compiled from MLS data.

# Average Sales Price

February-17

OAHU, HAWAII

(The average sales price for all closed sales in a given month.)



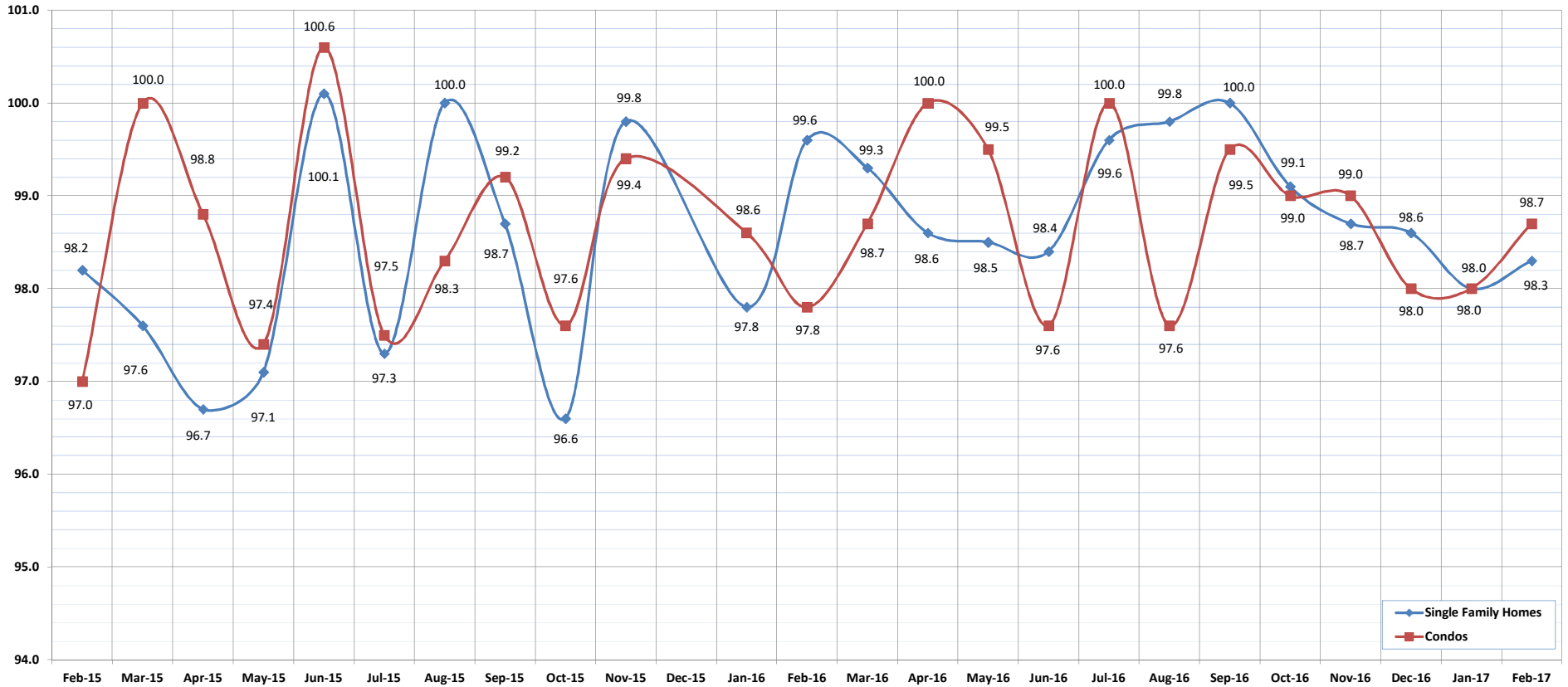
	Mar-15	Apr-15	May-15	Jun-15	Jul-15	Aug-15	Sep-15	Oct-15	Nov-15	Dec-15	Jan-16	Feb-16	Mar-16	Apr-16	May-16	Jun-16	Jul-16	Aug-16	Sep-16	Oct-16	Nov-16	Dec-16	Jan-17	Feb-17
Average Sales Price: SFH	985,910	830,475	950,194	858,986	849,316	844,596	866,732	869,967	929,559	875,962	839,976	830,331	898,532	933,044	825,826	972,357	883,952	914,314	852,712	859,047	884,577	920,466	899,593	893,468
Average Sales Price: Condos	462,077	430,131	414,944	380,493	389,595	410,794	427,659	427,963	409,595	434,287	420,376	431,976	457,503	462,803	422,831	463,587	459,859	443,371	437,297	451,070	456,270	450,865	455,595	461,275

# Percent of Original List Price Received

February-17

OAHU, HAWAII

(The percentage found when dividing a property's sales price by the original list price.)



	Feb-15	Mar-15	Apr-15	May-15	Jun-15	Jul-15	Aug-15	Sep-15	Oct-15	Nov-15	Jan-16	Feb-16	Mar-16	Apr-16	May-16	Jun-16	Jul-16	Aug-16	Sep-16	Oct-16	Nov-16	Dec-16	Jan-17	Feb-17
Percent of Original List Price: SFH	98.2	97.6	96.7	97.1	100.1	97.3	100.0	98.7	96.6	99.8	97.8	99.6	99.3	98.6	98.5	98.4	99.6	99.8	100.0	99.1	98.7	98.6	98.0	98.3
Percent of Original List Price: Condos	97.0	100.0	98.8	97.4	100.6	97.5	98.3	99.2	97.6	99.4	98.6	97.8	98.7	100.0	99.5	97.6	100.0	97.6	99.5	99.0	99.0	98.0	98.0	98.7

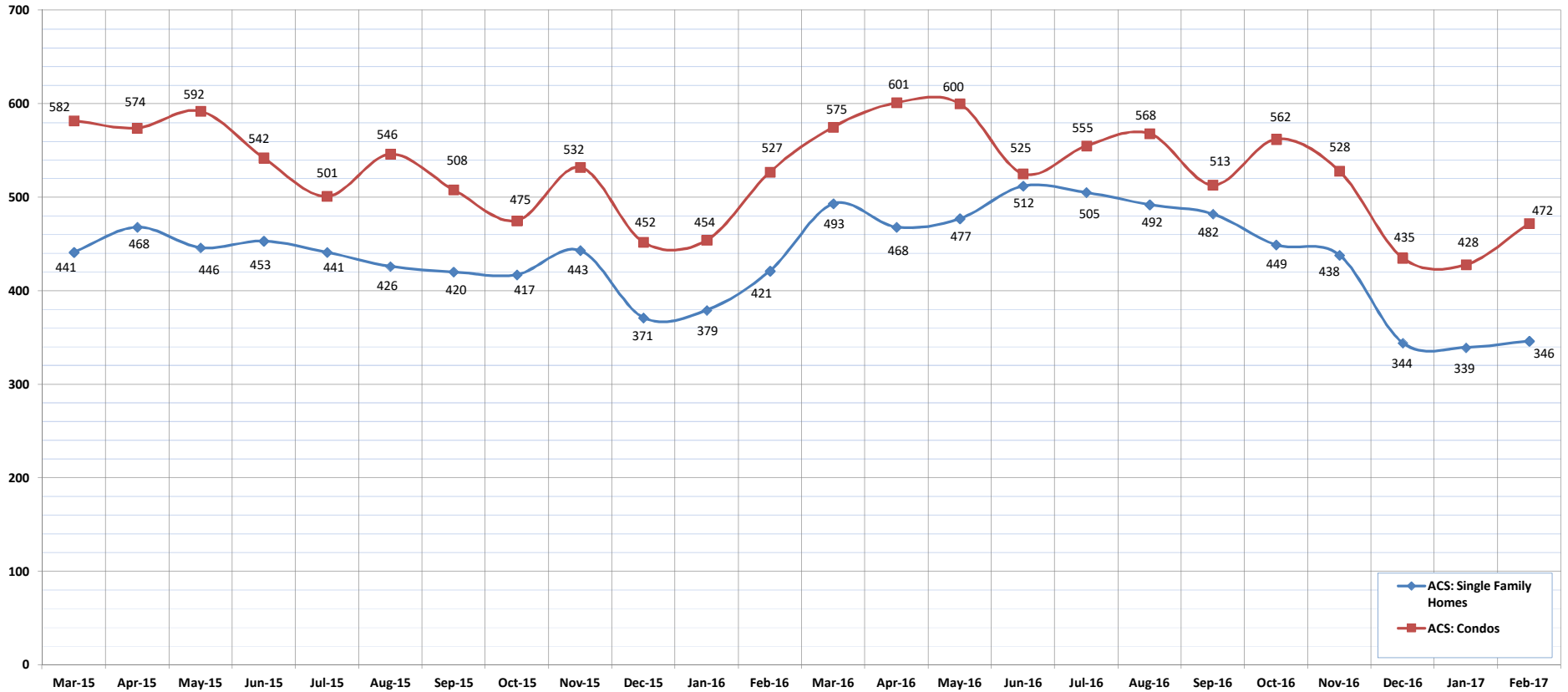
SOURCE: Honolulu Board of REALTORS®, compiled from MLS data.

# Active Continue to Show

February-17

OAHU, HAWAII

(A count of the properties that are in ACS during the current month.)



	Mar-15	Apr-15	May-15	Jun-15	Jul-15	Aug-15	Sep-15	Oct-15	Nov-15	Dec-15	Jan-16	Feb-16	Mar-16	Apr-16	May-16	Jun-16	Jul-16	Aug-16	Sep-16	Oct-16	Nov-16	Dec-16	Jan-17	Feb-17
ACS: Single Family Homes	441	468	446	453	441	426	420	417	443	371	379	421	493	468	477	512	505	492	482	449	438	344	339	346
ACS: Condos	582	574	592	542	501	546	508	475	532	452	454	527	575	601	600	525	555	568	513	562	528	435	428	472

SOURCE: Honolulu Board of REALTORS®, compiled from MLS data.

# Housing Supply Overview

February 2017

Single Family Homes	Pending Sales			Days on Market			Percentage of Original Price Received			Inventory of Homes for Sale			Months Supply of Inventory		
	Feb-17	Feb-16	%	Feb-17	Feb-16	%	Feb-17	Feb-16	%	Feb-17	Feb-16	%	Feb-17	Feb-16	%
\$350,000 and Below	115	138	-16.7%	24	36	-33.3%	96.1%	96.0%	0.1%	23	27	-14.8%	2.2	2.1	4.8%
\$350,001 - \$475,000	222	302	-26.5%	22	20	10.0%	97.2%	97.9%	-0.7%	41	62	-33.9%	1.9	2.2	-13.6%
\$475,001 - \$550,000	315	380	-17.1%	16	15	6.7%	98.8%	98.6%	0.2%	49	70	-30.0%	1.7	2.2	-22.7%
\$550,001 - \$650,000	666	675	-1.3%	13	16	-18.8%	100.1%	98.5%	1.6%	100	124	-19.4%	1.8	2.2	-18.2%
\$650,001 - \$800,000	1038	861	20.6%	16	21	-23.8%	99.0%	98.0%	1.0%	175	197	-11.2%	2.2	2.9	-24.1%
\$800,001 - \$1.1M	868	707	22.8%	19	22	-13.6%	98.0%	97.5%	0.5%	187	184	1.6%	2.8	3.4	-17.6%
\$1.1M - \$1.9M	505	456	10.7%	32	30	6.7%	96.6%	95.3%	1.4%	208	217	-4.1%	5.2	6.2	-16.1%
\$1.9M and Above	180	161	11.8%	76	59	28.8%	91.2%	93.3%	-2.3%	229	237	-3.4%	16.0	17.7	-9.6%
<b>All Single Family Homes</b>	<b>3909</b>	<b>3680</b>	<b>6.2%</b>	<b>18</b>	<b>20</b>	<b>-10.0%</b>	<b>99.0%</b>	<b>98.3%</b>	<b>0.7%</b>	<b>1012</b>	<b>1118</b>	<b>-9.5%</b>	<b>3.2</b>	<b>3.7</b>	<b>-13.5%</b>

Condos	Pending Sales			Days on Market			Percentage of Original Price Received			Inventory of Homes for Sale			Months Supply of Inventory		
	Feb-17	Feb-16	%	Feb-17	Feb-16	%	Feb-17	Feb-16	%	Feb-17	Feb-16	%	Feb-17	Feb-16	%
\$150,000 and below	368	385	-4.4%	43	44	-2.3%	91.3%	90.6%	0.8%	117	147	-20.4%	3.6	4.4	-18.2%
\$150,001 - \$200,000	338	335	0.9%	28	32	-12.5%	95.9%	96.4%	-0.5%	83	99	-16.2%	3.1	3.2	-3.1%
\$200,001 - \$250,000	402	419	-4.1%	24	29	-17.2%	97.1%	96.6%	0.5%	107	95	12.6%	3.1	2.4	29.2%
\$250,001 - \$300,000	535	657	-18.6%	19	21	-9.5%	98.3%	98.0%	0.3%	123	158	-22.2%	2.4	2.8	-14.3%
\$300,001 - \$375,000	1018	1041	-2.2%	14	17	-17.6%	99.3%	98.1%	1.2%	187	203	-7.9%	2.2	2.5	-12.0%
\$375,001 - \$475,000	1114	1075	3.6%	14	16	-12.5%	98.6%	98.8%	-0.2%	228	249	-8.4%	2.4	3.0	-20.0%
\$475,001 - \$700,000	1256	962	30.6%	19	25	-24.0%	98.8%	98.0%	0.8%	278	314	-11.5%	2.9	4.2	-31.0%
\$700,001 and above	585	484	20.9%	52	43	20.9%	94.6%	96.0%	-1.5%	402	400	0.5%	8.9	9.5	-6.3%
<b>All Condos</b>	<b>5616</b>	<b>5358</b>	<b>4.8%</b>	<b>20</b>	<b>22</b>	<b>-9.1%</b>	<b>98.8%</b>	<b>98.7%</b>	<b>0.1%</b>	<b>1525</b>	<b>1665</b>	<b>-8.4%</b>	<b>3.3</b>	<b>3.8</b>	<b>-13.2%</b>

SOURCE: Honolulu Board of REALTORS®, compiled from MLS data.

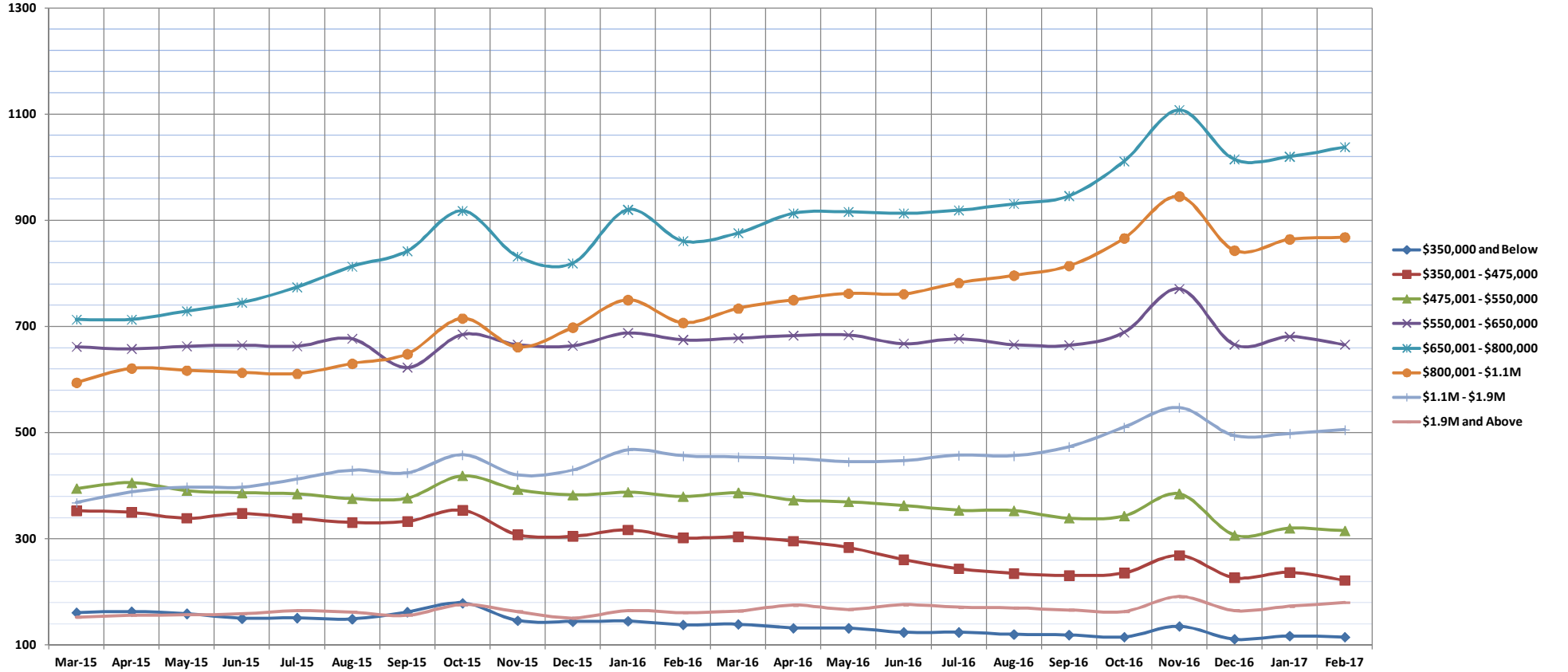


# Pending Sales

Feb-17

Single Family Homes: Monthly, by Price Range

(A count of properties that have offers accepted on them in a given month. Based on a 12 month rolling total.)



	Mar-15	Apr-15	May-15	Jun-15	Jul-15	Aug-15	Sep-15	Oct-15	Nov-15	Dec-15	Jan-16	Feb-16	Mar-16	Apr-16	May-16	Jun-16	Jul-16	Aug-16	Sep-16	Oct-16	Nov-16	Dec-16	Jan-17	Feb-17
<b>\$350,000 and Below</b>	161	163	159	150	151	149	162	179	146	144	145	138	139	132	132	124	124	120	119	115	135	111	117	115
<b>\$350,001 - \$475,000</b>	353	350	339	348	339	331	333	354	308	305	317	302	304	296	284	261	244	235	231	236	269	227	237	222
<b>\$475,001 - \$550,000</b>	395	406	391	387	385	376	377	419	393	383	388	380	387	373	370	363	354	353	339	343	385	307	320	315
<b>\$550,001 - \$650,000</b>	662	658	663	665	663	677	623	685	666	664	688	675	678	683	684	668	677	666	665	689	771	666	681	666
<b>\$650,001 - \$800,000</b>	713	713	729	745	774	813	842	918	832	819	920	861	876	913	916	913	919	931	946	1011	1108	1015	1020	1038
<b>\$800,001 - \$1.1M</b>	594	621	617	613	611	630	648	715	661	698	750	707	734	750	762	761	782	796	814	866	945	843	864	868
<b>\$1.1M - \$1.9M</b>	368	388	397	397	412	429	424	458	420	429	467	456	454	451	445	447	457	456	473	510	547	494	498	505
<b>\$1.9M and Above</b>	153	156	157	159	165	162	156	176	163	151	165	161	164	175	167	176	171	170	166	163	191	165	173	180
<b>All Single Family Homes</b>	3399	3455	3452	3464	3500	3567	3565	3904	3589	3593	3840	3680	3736	3773	3760	3713	3728	3727	3753	3933	4351	3828	3910	3909

SOURCE: Honolulu Board of REALTORS®, compiled from MLS data.

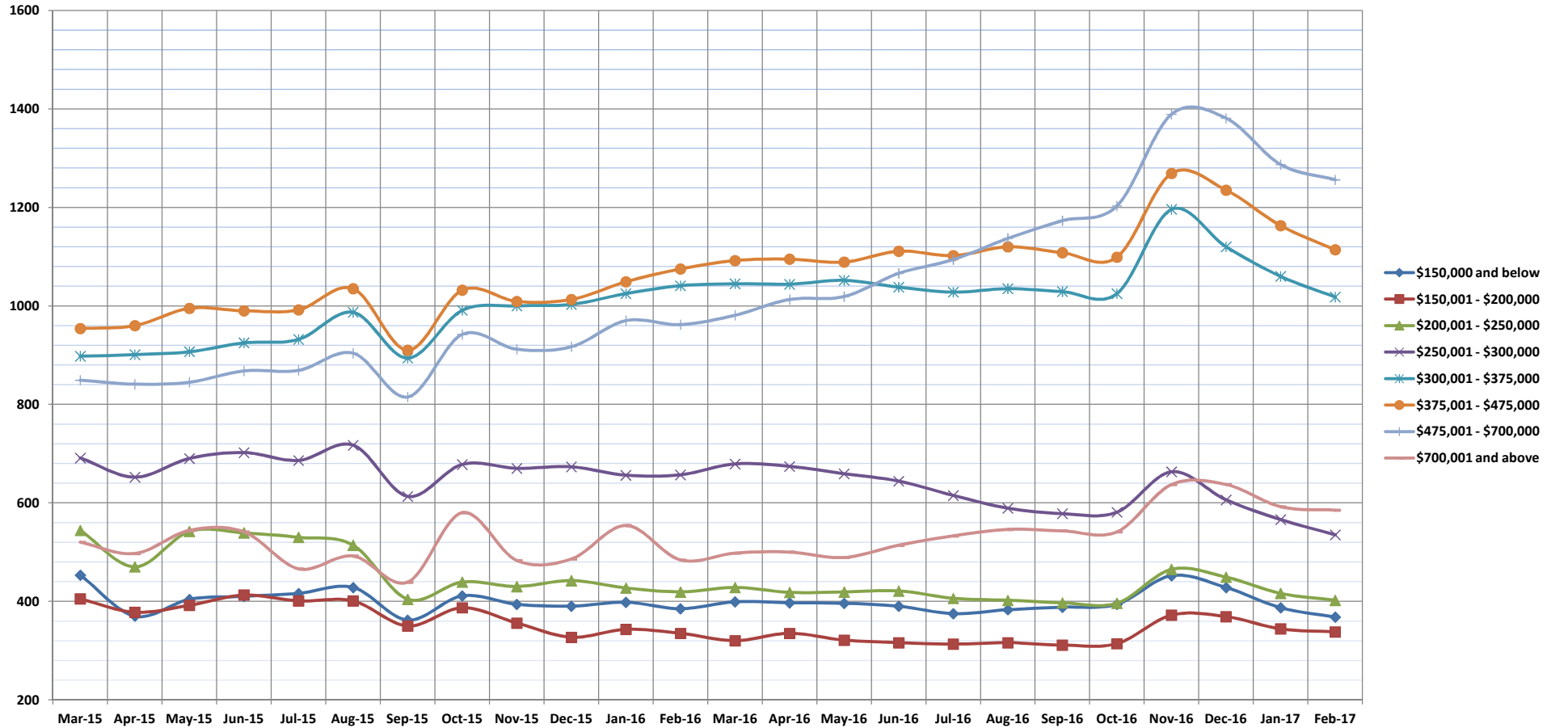


# Pending Sales

Feb-17

Condos: Monthly, by Price Range

(A count of properties that have offers accepted on them in a given month. Based on a 12 month rolling total.)



	Mar-15	Apr-15	May-15	Jun-15	Jul-15	Aug-15	Sep-15	Oct-15	Nov-15	Dec-15	Jan-16	Feb-16	Mar-16	Apr-16	May-16	Jun-16	Jul-16	Aug-16	Sep-16	Oct-16	Nov-16	Dec-16	Jan-17	Feb-17
<b>\$150,000 and below</b>	453	370	404	410	416	428	362	411	394	390	398	385	399	397	396	390	375	383	388	394	452	428	387	368
<b>\$150,001 - \$200,000</b>	405	378	392	413	401	401	350	387	356	327	343	335	320	335	321	316	313	316	311	314	372	369	344	338
<b>\$200,001 - \$250,000</b>	544	470	542	539	530	514	404	439	430	442	427	419	428	418	419	421	406	402	397	396	465	449	416	402
<b>\$250,001 - \$300,000</b>	691	652	690	702	686	717	613	678	670	673	656	657	679	674	659	644	615	589	578	581	663	606	566	535
<b>\$300,001 - \$375,000</b>	898	901	907	925	932	987	894	991	1000	1003	1025	1041	1045	1044	1052	1038	1028	1035	1029	1025	1196	1120	1060	1018
<b>\$375,001 - \$475,000</b>	954	960	995	990	992	1035	910	1032	1009	1013	1049	1075	1092	1095	1089	1111	1102	1120	1108	1099	1269	1235	1163	1114
<b>\$475,001 - \$700,000</b>	849	841	845	868	869	904	815	942	912	917	970	962	981	1013	1019	1066	1094	1137	1173	1203	1389	1381	1287	1256
<b>\$700,001 and above</b>	520	497	544	541	466	492	439	580	483	486	554	484	498	500	489	514	533	546	543	541	637	637	592	585
<b>All Condos</b>	5314	5069	5319	5388	5292	5478	4787	5460	5254	5251	5422	5358	5442	5476	5444	5500	5466	5528	5527	5553	6443	6225	5815	5616

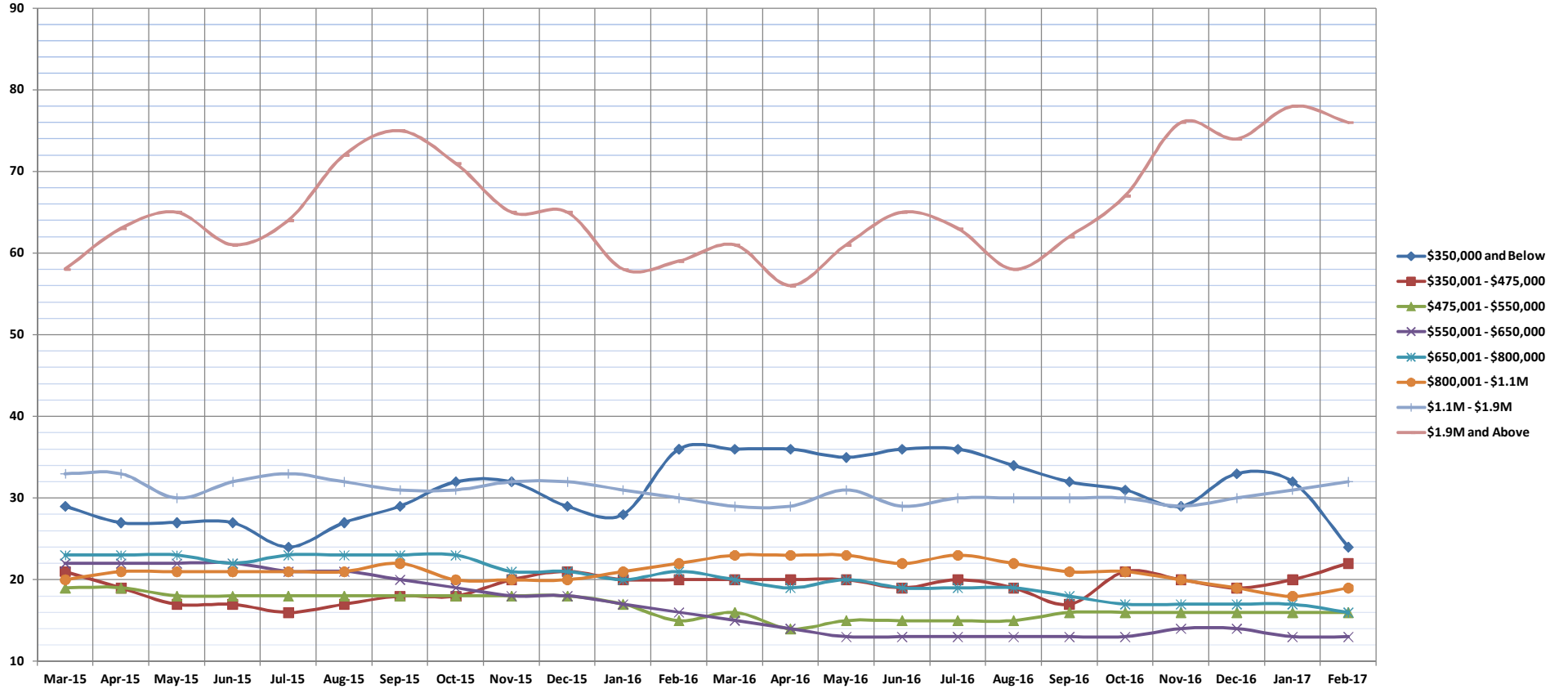
SOURCE: Honolulu Board of REALTORS®, compiled from MLS data.

# Days on Market Until Sale

Feb-17

Single Family Homes: Monthly, by Price Range

(The median number of days between when a property is first listed and when an offer is accepted. Based on a 12 month rolling median.)



	Mar-15	Apr-15	May-15	Jun-15	Jul-15	Aug-15	Sep-15	Oct-15	Nov-15	Dec-15	Jan-16	Feb-16	Mar-16	Apr-16	May-16	Jun-16	Jul-16	Aug-16	Sep-16	Oct-16	Nov-16	Dec-16	Jan-17	Feb-17
\$350,000 and Below	29	27	27	27	24	27	29	32	32	29	28	36	36	36	35	36	36	34	32	31	29	33	32	24
\$350,001 - \$475,000	21	19	17	17	16	17	18	18	20	21	20	20	20	20	20	19	20	19	17	21	20	19	20	22
\$475,001 - \$550,000	19	19	18	18	18	18	18	18	18	18	17	15	16	14	15	15	15	15	16	16	16	16	16	16
\$550,001 - \$650,000	22	22	22	22	21	21	20	19	18	18	17	16	15	14	13	13	13	13	13	13	14	14	13	13
\$650,001 - \$800,000	23	23	23	22	23	23	23	23	21	21	20	21	20	19	20	19	19	19	18	17	17	17	17	16
\$800,001 - \$1.1M	20	21	21	21	21	21	22	20	20	20	21	22	23	23	23	22	23	22	21	21	20	19	18	19
\$1.1M - \$1.9M	33	33	30	32	33	32	31	31	32	32	31	30	29	29	31	29	30	30	30	30	29	30	31	32
\$1.9M and Above	58	63	65	61	64	72	75	71	65	65	58	59	61	56	61	65	63	58	62	67	76	74	78	76
All Single Family Homes	22	22	22	22	22	22	22	21	21	21	20	20	20	19	19	19	19	19	18	18	18	18	18	18

SOURCE: Honolulu Board of REALTORS®, compiled from MLS data.



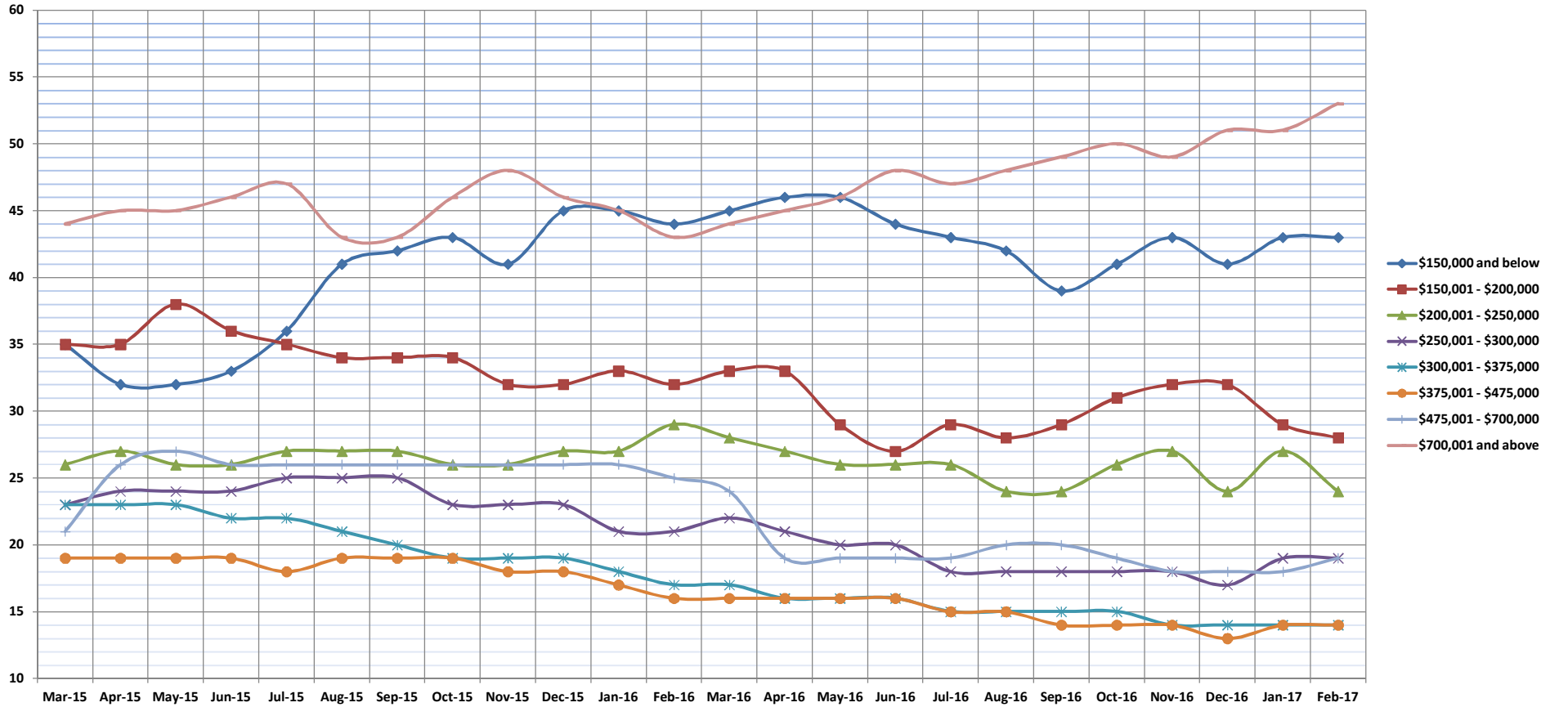


# Days on Market Until Sale

Feb-17

Condos: Monthly, by Price Range

(The median number of days between when a property is first listed and when an offer is accepted. Based on a 12 month rolling median.)



	Mar-15	Apr-15	May-15	Jun-15	Jul-15	Aug-15	Sep-15	Oct-15	Nov-15	Dec-15	Jan-16	Feb-16	Mar-16	Apr-16	May-16	Jun-16	Jul-16	Aug-16	Sep-16	Oct-16	Nov-16	Dec-16	Jan-17	Feb-17
\$150,000 and below	35	32	32	33	36	41	42	43	41	45	45	44	45	46	46	44	43	42	39	41	43	41	43	43
\$150,001 - \$200,000	35	35	38	36	35	34	34	34	32	32	33	32	33	33	29	27	29	28	29	31	32	32	29	28
\$200,001 - \$250,000	26	27	26	26	27	27	27	26	26	27	27	29	28	27	26	26	26	24	24	26	27	24	27	24
\$250,001 - \$300,000	23	24	24	24	25	25	25	23	23	23	21	21	22	21	20	20	18	18	18	18	18	18	19	19
\$300,001 - \$375,000	23	23	23	22	22	21	20	19	19	19	18	17	17	16	16	16	16	15	15	15	15	14	14	14
\$375,001 - \$475,000	19	19	19	19	18	19	19	19	18	18	17	16	16	16	16	16	15	15	14	14	14	14	13	14
\$475,001 - \$700,000	21	26	27	26	26	26	26	26	26	26	26	25	24	19	19	19	19	20	20	19	18	18	18	19
\$700,001 and above	44	45	45	46	47	43	43	46	48	46	45	43	44	45	46	48	47	48	49	50	49	51	51	53
All Condos	24	24	24	24	24	23	23	23	23	23	22	22	21	21	21	21	20	20	20	20	20	19	20	20

SOURCE: Honolulu Board of REALTORS®, compiled from MLS data.

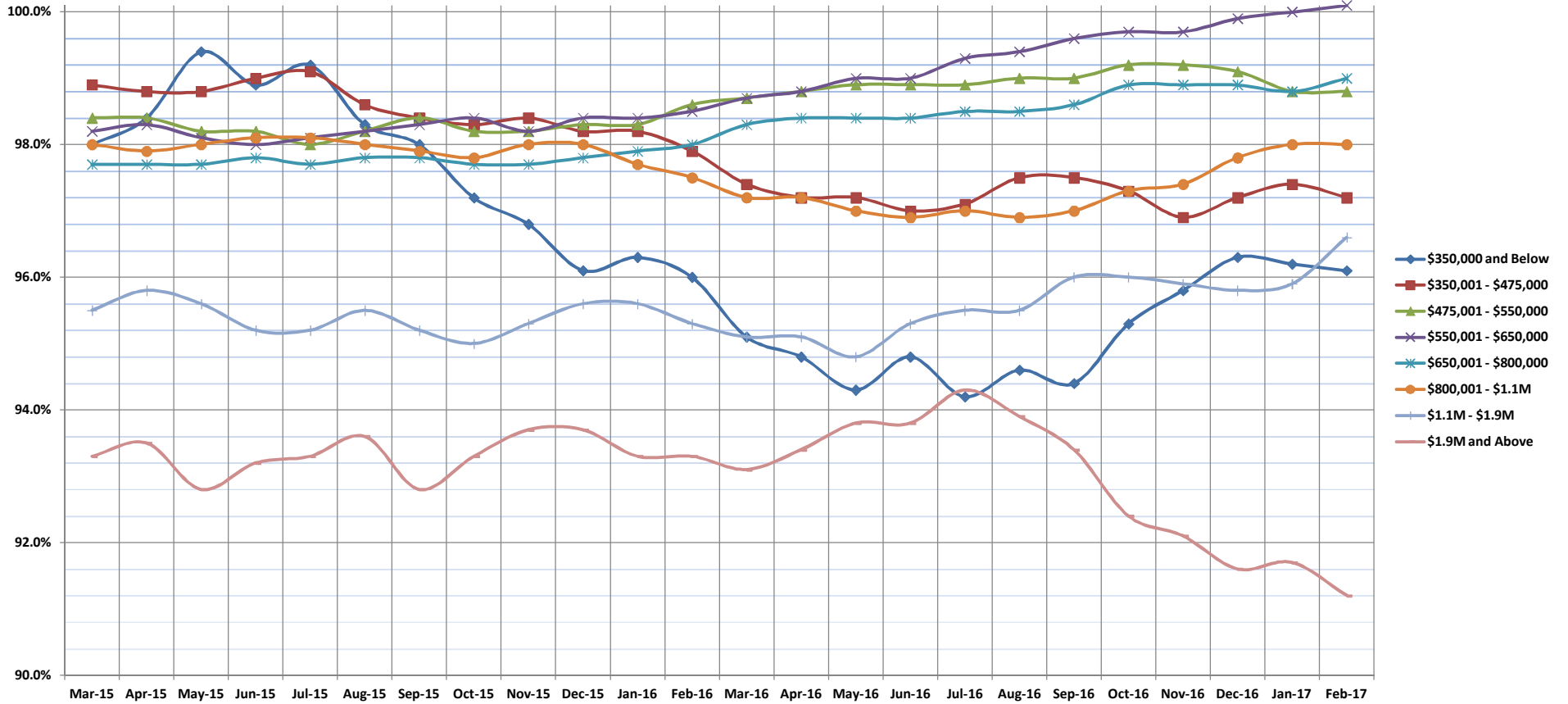


# Percentage of Original Price Received

Feb-17

Single Family Homes: Monthly, by Price Range

(The average percentage found when dividing a property's sales price by the original list price. Based on a rolling 12 month average.)



	Mar-15	Apr-15	May-15	Jun-15	Jul-15	Aug-15	Sep-15	Oct-15	Nov-15	Dec-15	Jan-16	Feb-16	Mar-16	Apr-16	May-16	Jun-16	Jul-16	Aug-16	Sep-16	Oct-16	Nov-16	Dec-16	Jan-17	Feb-17
<b>\$350,000 and Below</b>	98.0%	98.4%	99.4%	98.9%	99.2%	98.3%	98.0%	97.2%	96.8%	96.1%	96.3%	96.0%	95.1%	94.8%	94.3%	94.8%	94.2%	94.6%	94.4%	95.3%	95.8%	96.3%	96.2%	96.1%
<b>\$350,001 - \$475,000</b>	98.9%	98.8%	98.8%	99.0%	99.1%	98.6%	98.4%	98.3%	98.4%	98.2%	98.2%	97.9%	97.4%	97.2%	97.2%	97.0%	97.1%	97.5%	97.5%	97.3%	96.9%	97.2%	97.4%	97.2%
<b>\$475,001 - \$550,000</b>	98.4%	98.4%	98.2%	98.2%	98.0%	98.2%	98.4%	98.2%	98.2%	98.3%	98.3%	98.6%	98.7%	98.8%	98.9%	98.9%	98.9%	99.0%	99.0%	99.2%	99.2%	99.1%	98.8%	98.8%
<b>\$550,001 - \$650,000</b>	98.2%	98.3%	98.1%	98.0%	98.1%	98.2%	98.3%	98.4%	98.2%	98.4%	98.4%	98.5%	98.7%	98.8%	99.0%	99.0%	99.3%	99.4%	99.6%	99.7%	99.7%	99.9%	100.0%	100.1%
<b>\$650,001 - \$800,000</b>	97.7%	97.7%	97.7%	97.8%	97.7%	97.8%	97.8%	97.7%	97.7%	97.8%	97.9%	97.8%	98.3%	98.0%	98.3%	98.4%	98.4%	98.5%	98.6%	98.9%	98.9%	98.9%	98.8%	99.0%
<b>\$800,001 - \$1.1M</b>	98.0%	97.9%	98.0%	98.1%	98.1%	98.0%	97.9%	97.8%	98.0%	98.0%	97.7%	97.5%	97.2%	97.2%	97.0%	96.9%	97.0%	96.9%	97.0%	97.3%	97.4%	97.8%	98.0%	98.0%
<b>\$1.1M - \$1.9M</b>	95.5%	95.8%	95.6%	95.2%	95.2%	95.5%	95.2%	95.0%	95.3%	95.6%	95.6%	95.3%	95.1%	95.1%	94.8%	95.3%	95.5%	95.5%	96.0%	96.0%	95.9%	95.8%	95.9%	96.6%
<b>\$1.9M and Above</b>	93.3%	93.5%	92.8%	93.2%	93.3%	93.6%	92.8%	93.3%	93.7%	93.7%	93.3%	93.3%	93.1%	93.4%	93.8%	93.8%	94.3%	93.9%	93.4%	92.4%	92.1%	91.6%	91.7%	91.2%
<b>All Single Family Homes</b>	97.9%	97.6%	97.5%	97.7%	97.6%	97.7%	97.8%	97.7%	97.4%	98.1%	98.2%	98.3%	98.5%	98.6%	98.7%	98.6%	98.8%	98.8%	98.9%	99.1%	99.1%	99.1%	99.1%	99.0%

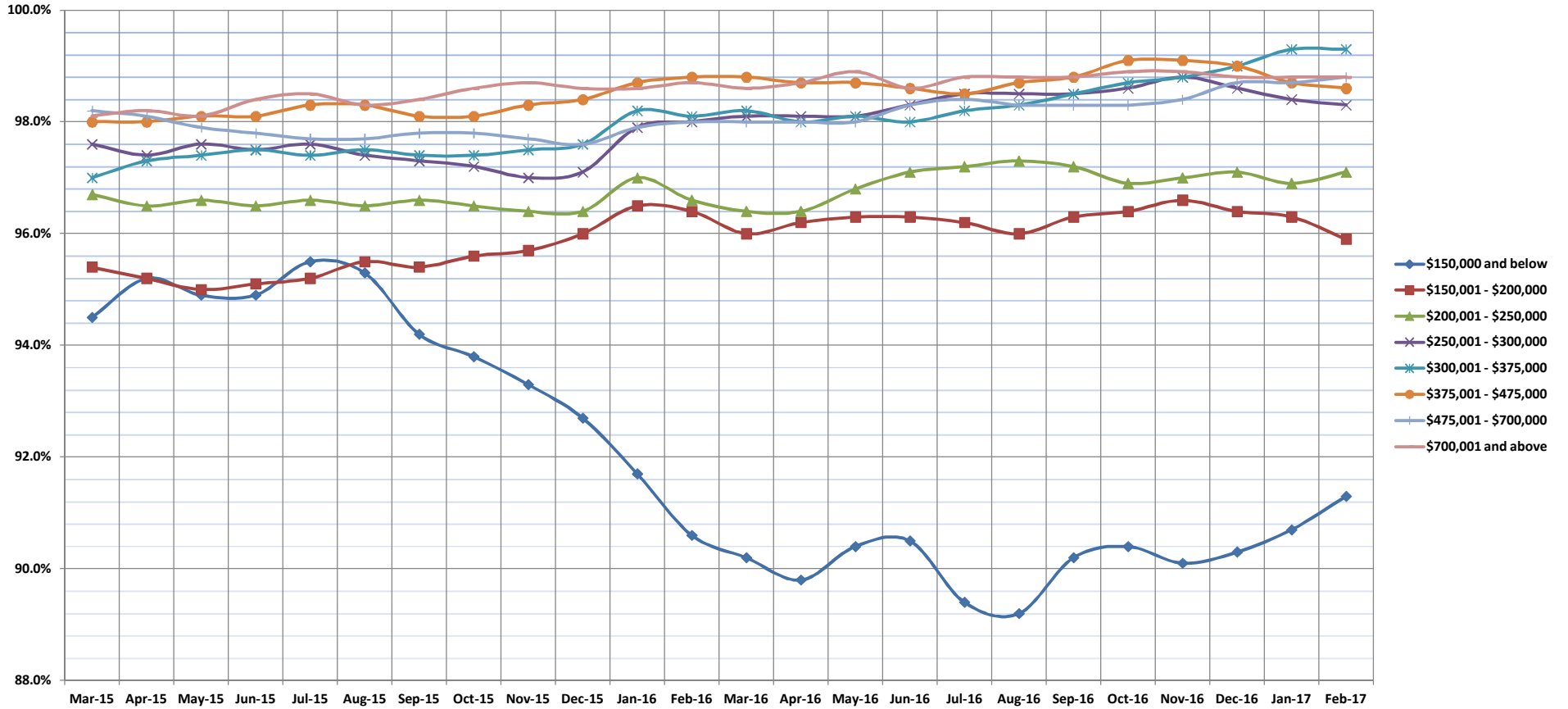
SOURCE: Honolulu Board of REALTORS®, compiled from MLS data.

# Percentage of Original Price Received

Feb-17

Condos: Monthly, by Price Range

(The average percentage found when dividing a property's sales price by the original list price. Based on a rolling 12 month average.)



	Mar-15	Apr-15	May-15	Jun-15	Jul-15	Aug-15	Sep-15	Oct-15	Nov-15	Dec-15	Jan-16	Feb-16	Mar-16	Apr-16	May-16	Jun-16	Jul-16	Aug-16	Sep-16	Oct-16	Nov-16	Dec-16	Jan-17	Feb-17
<b>\$150,000 and below</b>	94.5%	95.2%	94.9%	94.9%	95.5%	95.3%	94.2%	93.8%	93.3%	92.7%	91.7%	90.6%	90.2%	89.8%	90.4%	90.5%	89.4%	89.2%	90.2%	90.4%	90.1%	90.3%	90.7%	91.3%
<b>\$150,001 - \$200,000</b>	95.4%	95.2%	95.0%	95.1%	95.2%	95.5%	95.4%	95.6%	95.7%	96.0%	96.5%	96.4%	96.0%	96.2%	96.3%	96.3%	96.2%	96.0%	96.3%	96.4%	96.6%	96.4%	96.3%	95.9%
<b>\$200,001 - \$250,000</b>	96.7%	96.5%	96.6%	96.5%	96.6%	96.5%	96.6%	96.5%	96.4%	96.4%	97.0%	96.6%	96.4%	96.4%	96.8%	97.1%	97.2%	97.3%	97.2%	96.9%	97.0%	97.1%	96.9%	97.1%
<b>\$250,001 - \$300,000</b>	97.6%	97.4%	97.6%	97.5%	97.6%	97.4%	97.3%	97.2%	97.5%	97.0%	97.1%	97.9%	98.0%	98.1%	98.2%	98.3%	98.5%	98.5%	98.3%	98.5%	98.6%	98.8%	99.0%	99.3%
<b>\$300,001 - \$375,000</b>	97.0%	97.3%	97.4%	97.6%	97.4%	97.5%	97.4%	97.4%	97.5%	97.6%	98.2%	97.6%	98.2%	98.0%	98.2%	98.0%	98.2%	98.3%	98.3%	98.5%	98.7%	98.8%	99.0%	99.3%
<b>\$375,001 - \$475,000</b>	98.0%	98.0%	98.1%	98.1%	98.3%	98.3%	98.1%	98.1%	98.3%	98.4%	98.7%	98.8%	98.8%	98.7%	98.7%	98.6%	98.5%	98.7%	98.8%	99.1%	99.1%	99.0%	98.7%	98.6%
<b>\$475,001 - \$700,000</b>	98.2%	98.1%	97.9%	97.8%	97.7%	97.7%	97.8%	97.8%	97.7%	97.6%	97.9%	98.0%	98.0%	98.0%	98.0%	98.3%	98.4%	98.3%	98.3%	98.3%	98.3%	98.3%	98.4%	98.8%
<b>\$700,001 and above</b>	94.7%	94.7%	95.0%	95.6%	95.4%	96.3%	96.4%	96.4%	96.5%	96.8%	96.4%	96.0%	95.2%	95.1%	95.3%	95.1%	94.9%	94.9%	94.9%	94.8%	94.5%	94.0%	94.4%	94.6%
<b>All Condos</b>	98.1%	98.2%	98.1%	98.4%	98.5%	98.3%	98.4%	98.6%	98.7%	98.6%	98.6%	98.7%	98.6%	98.7%	98.6%	98.7%	98.8%	98.8%	98.8%	98.8%	98.9%	98.9%	98.8%	98.8%

SOURCE: Honolulu Board of REALTORS®, compiled from MLS data.

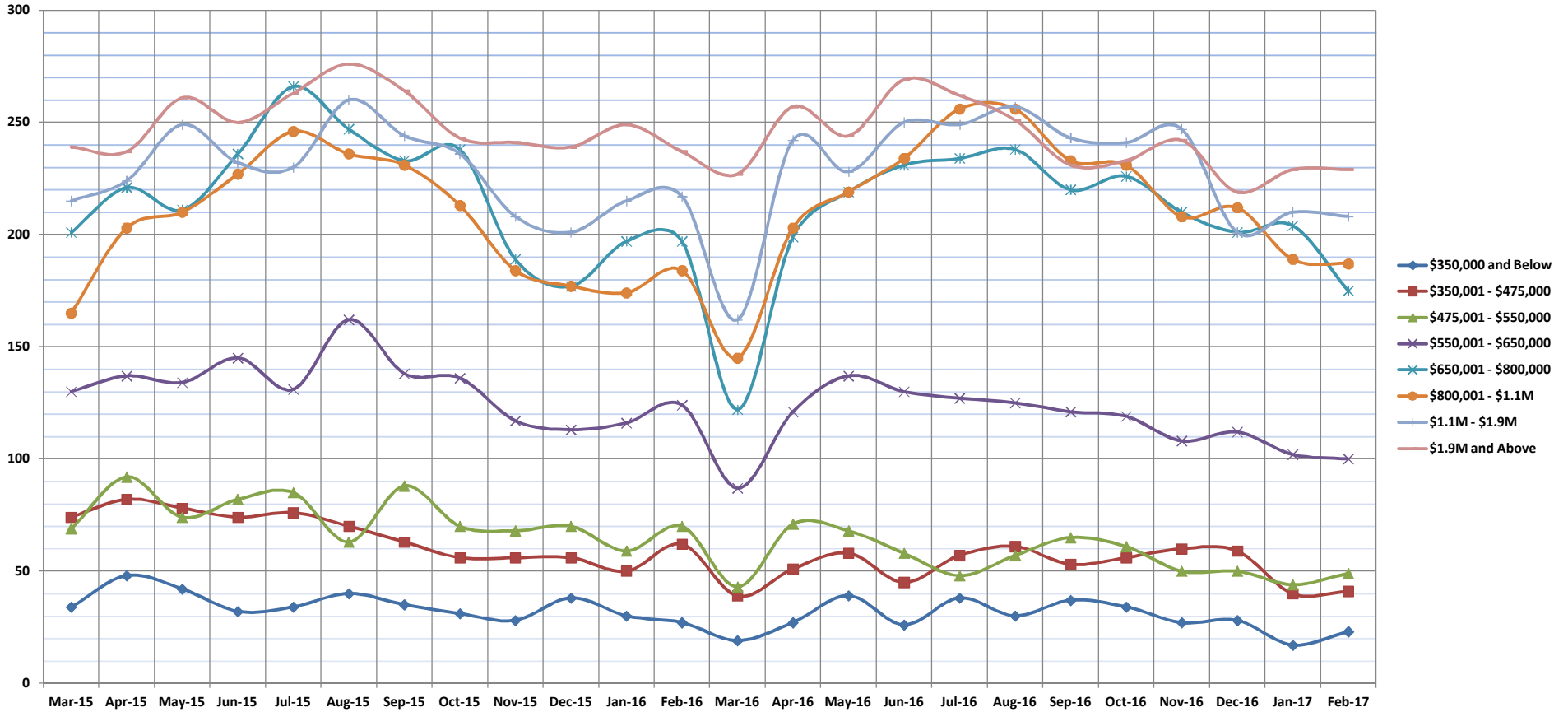


# Inventory of Homes for Sale

Feb-17

Single Family Homes: Monthly, by Price Range

(The number of properties available for sale in active status at the end of a given month.)



	Mar-15	Apr-15	May-15	Jun-15	Jul-15	Aug-15	Sep-15	Oct-15	Nov-15	Dec-15	Jan-16	Feb-16	Mar-16	Apr-16	May-16	Jun-16	Jul-16	Aug-16	Sep-16	Oct-16	Nov-16	Dec-16	Jan-17	Feb-17
\$350,000 and Below	34	48	42	32	34	40	35	31	28	38	30	27	19	27	39	26	38	30	37	34	27	28	17	23
\$350,001 - \$475,000	74	82	78	74	76	70	63	56	56	56	50	62	39	51	58	45	57	61	53	56	60	59	40	41
\$475,001 - \$550,000	69	92	74	82	85	63	88	70	68	70	59	70	43	71	68	58	48	57	65	61	50	50	44	49
\$550,001 - \$650,000	130	137	134	145	131	162	138	136	117	113	116	124	87	121	137	130	127	125	121	119	108	112	102	100
\$650,001 - \$800,000	201	221	211	236	266	247	233	238	189	177	197	197	122	199	219	231	234	238	220	226	210	201	204	175
\$800,001 - \$1.1M	165	203	210	227	246	236	231	213	184	177	174	184	145	203	219	234	256	256	233	231	208	212	189	187
\$1.1M - \$1.9M	215	224	249	232	230	260	244	236	208	201	215	217	162	242	228	250	249	257	243	241	247	201	210	208
\$1.9M and Above	239	237	261	250	263	276	264	243	241	239	249	237	227	257	244	269	262	251	231	233	242	219	229	229
All Single Family Homes	1127	1244	1259	1278	1331	1354	1296	1223	1091	1071	1090	1118	844	1171	1212	1243	1271	1275	1203	1201	1152	1082	1035	1012

SOURCE: Honolulu Board of REALTORS®, compiled from MLS data.

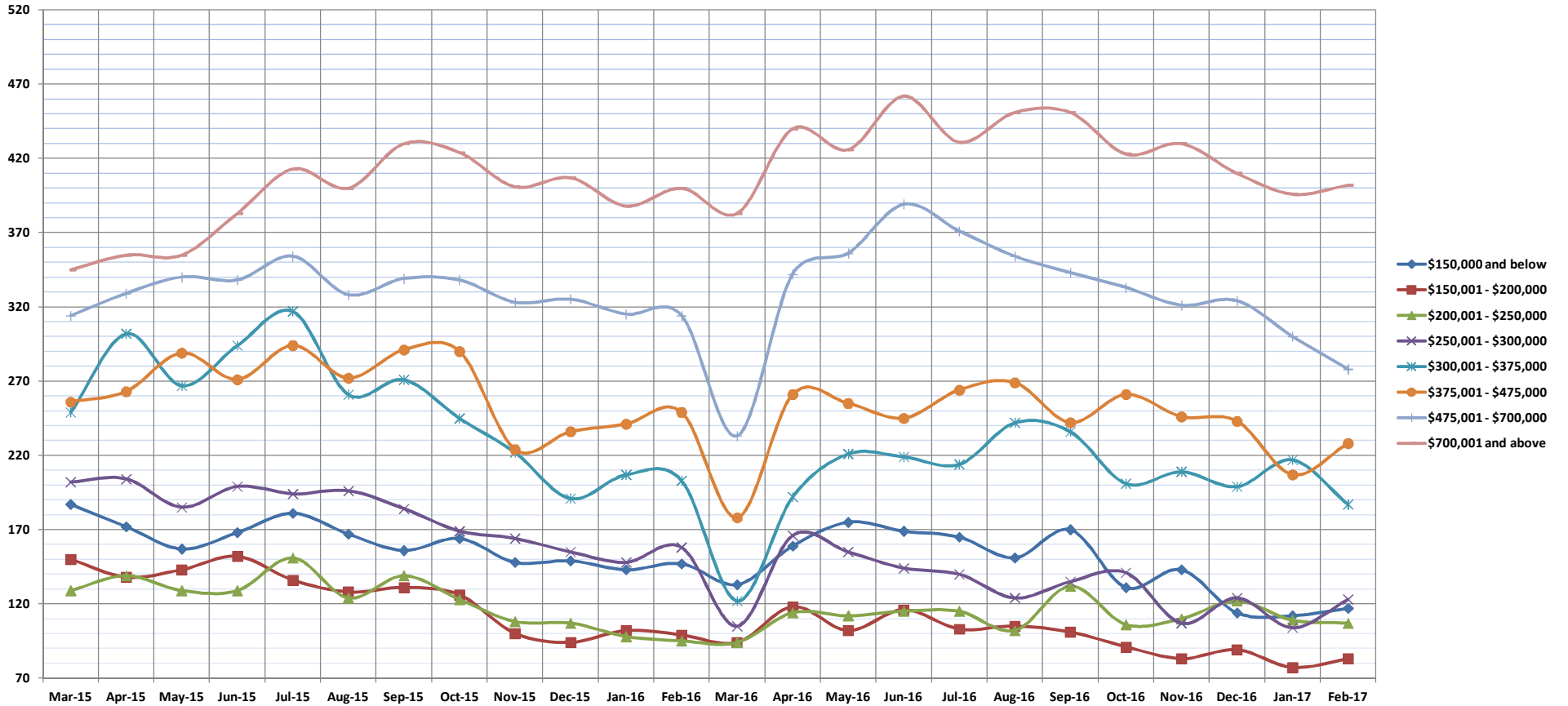


# Inventory of Homes for Sale

Feb-17

Condos: Monthly, by Price Range

(The number of properties available for sale in active status at the end of a given month.)



	Mar-15	Apr-15	May-15	Jun-15	Jul-15	Aug-15	Sep-15	Oct-15	Nov-15	Dec-15	Jan-16	Feb-16	Mar-16	Apr-16	May-16	Jun-16	Jul-16	Aug-16	Sep-16	Oct-16	Nov-16	Dec-16	Jan-17	Feb-17
\$150,000 and below	187	172	157	168	181	167	156	164	148	149	143	147	133	159	175	169	165	151	170	131	143	114	112	117
\$150,001 - \$200,000	150	138	143	152	136	128	131	126	100	94	102	99	94	118	102	116	103	105	101	91	83	89	77	83
\$200,001 - \$250,000	129	139	129	129	151	124	139	123	108	107	98	95	94	114	112	115	115	102	132	106	110	122	109	107
\$250,001 - \$300,000	202	204	185	199	194	196	184	169	164	155	148	158	105	166	155	144	140	124	135	141	107	124	104	123
\$300,001 - \$375,000	249	302	267	294	317	261	271	245	222	191	207	203	122	192	221	219	214	242	236	201	209	199	217	187
\$375,001 - \$475,000	256	263	289	271	294	272	291	290	224	236	241	249	178	261	255	245	264	269	242	261	246	243	207	228
\$475,001 - \$700,000	314	329	340	338	354	328	339	338	323	325	315	314	233	342	356	389	371	354	343	333	321	324	300	278
\$700,001 and above	345	355	355	383	413	400	430	424	401	407	388	400	383	440	426	462	431	451	451	423	430	410	396	402
All Condos	1832	1902	1865	1934	2040	1876	1941	1879	1690	1664	1642	1665	1342	1792	1802	1859	1803	1798	1810	1687	1649	1625	1522	1525

SOURCE: Honolulu Board of REALTORS®, compiled from MLS data.

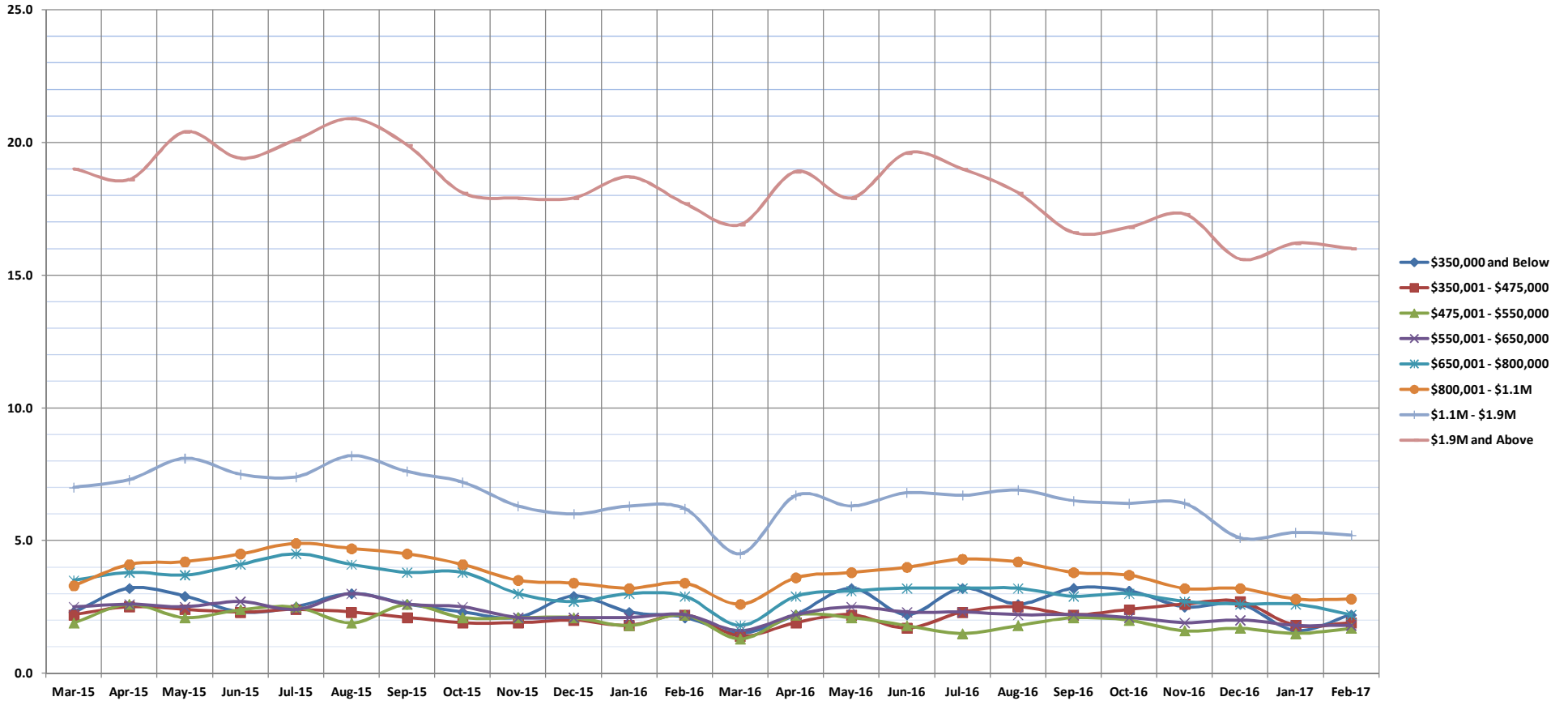


# Months Supply of Inventory

Feb-17

Single Family Homes: Monthly, by Price Range

(Compares the number of active listings available to the average monthly pending sales from the last 12 months.)



	Mar-15	Apr-15	May-15	Jun-15	Jul-15	Aug-15	Sep-15	Oct-15	Nov-15	Dec-15	Jan-16	Feb-16	Mar-16	Apr-16	May-16	Jun-16	Jul-16	Aug-16	Sep-16	Oct-16	Nov-16	Dec-16	Jan-17	Feb-17
\$350,000 and Below	2.3	3.2	2.9	2.3	2.5	3.0	2.6	2.3	2.1	2.9	2.3	2.1	1.5	2.2	3.2	2.2	3.2	2.6	3.2	3.1	2.5	2.6	1.6	2.2
\$350,001 - \$475,000	2.2	2.5	2.4	2.3	2.4	2.3	2.1	1.9	1.9	2.0	1.8	2.2	1.4	1.9	2.2	1.7	2.3	2.5	2.2	2.4	2.6	2.7	1.8	1.9
\$475,001 - \$550,000	1.9	2.6	2.1	2.4	2.5	1.9	2.6	2.1	2.1	2.1	1.8	2.2	1.3	2.2	2.1	1.8	1.5	1.8	2.1	2.0	1.6	1.7	1.5	1.7
\$550,001 - \$650,000	2.5	2.6	2.5	2.7	2.4	3.0	2.6	2.5	2.1	2.1	2.1	2.2	1.6	2.2	2.5	2.3	2.3	2.2	2.2	2.1	1.9	2.0	1.8	1.8
\$650,001 - \$800,000	3.5	3.8	3.7	4.1	4.5	4.1	3.8	3.8	3.0	2.7	3.0	2.9	1.8	2.9	3.1	3.2	3.2	3.2	2.9	3.0	2.7	2.6	2.6	2.2
\$800,001 - \$1.1M	3.3	4.1	4.2	4.5	4.9	4.7	4.5	4.1	3.5	3.4	3.2	3.4	2.6	3.6	3.8	4.0	4.3	4.2	3.8	3.7	3.2	3.2	2.8	2.8
\$1.1M - \$1.9M	7.0	7.3	8.1	7.5	7.4	8.2	7.6	7.2	6.3	6.0	6.3	6.2	4.5	6.7	6.3	6.8	6.7	6.9	6.5	6.4	6.4	5.1	5.3	5.2
\$1.9M and Above	19.0	18.6	20.4	19.4	20.1	20.9	19.9	18.1	17.9	17.9	18.7	17.7	16.9	18.9	17.9	19.6	19.0	18.1	16.6	16.8	17.3	15.6	16.2	16.0
All Single Family Homes	3.9	4.3	4.4	4.5	4.7	4.7	4.5	4.2	3.7	3.7	3.7	3.7	2.8	3.9	4.0	4.0	4.1	4.1	3.9	3.9	3.6	3.4	3.3	3.2

SOURCE: Honolulu Board of REALTORS®, compiled from MLS data.

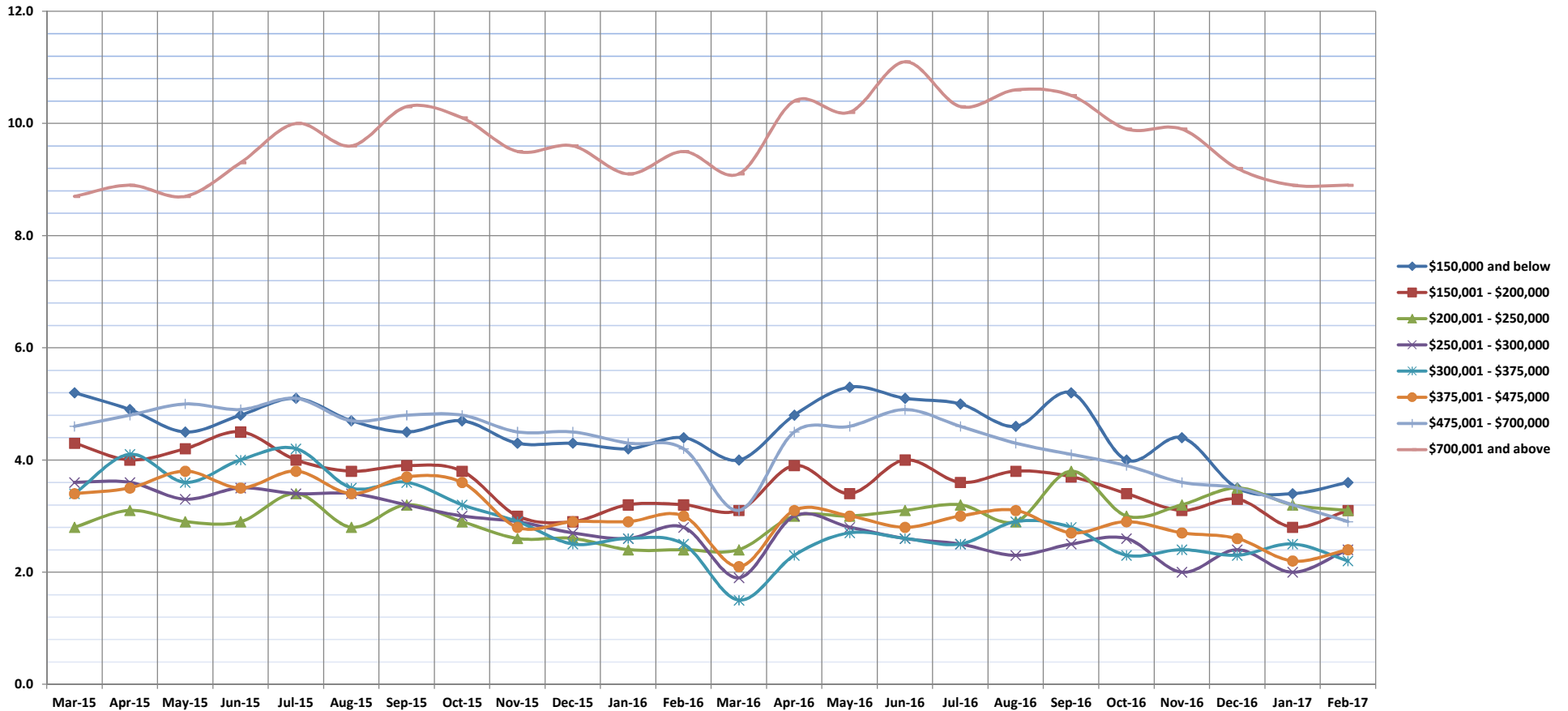


# Months Supply of Inventory

Feb-17

Condos: Monthly, by Price Range

(Compares the number of active listings available to the average monthly pending sales from the last 12 months.)



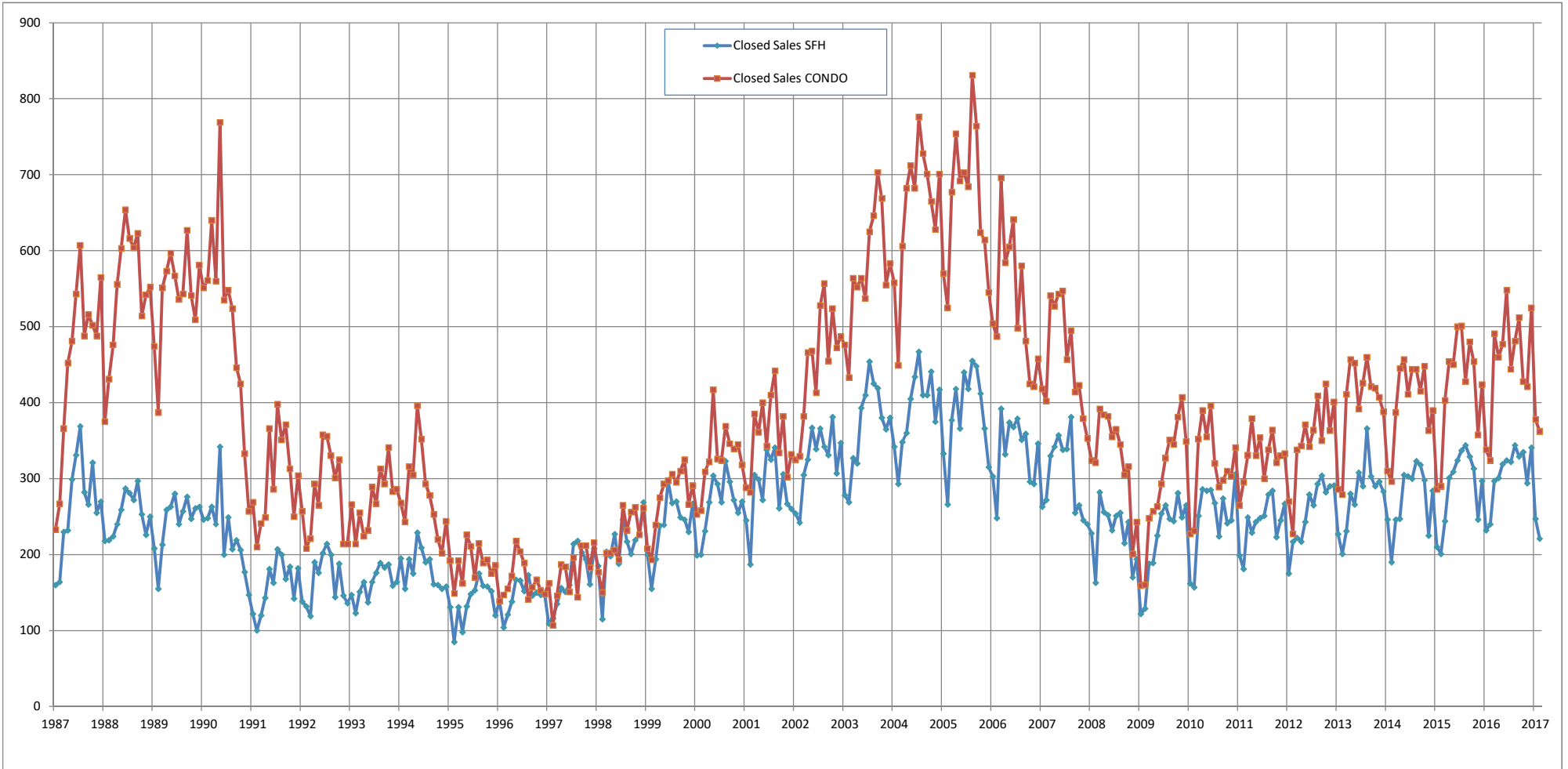
	Mar-15	Apr-15	May-15	Jun-15	Jul-15	Aug-15	Sep-15	Oct-15	Nov-15	Dec-15	Jan-16	Feb-16	Mar-16	Apr-16	May-16	Jun-16	Jul-16	Aug-16	Sep-16	Oct-16	Nov-16	Dec-16	Jan-17	Feb-17
\$150,000 and below	5.2	4.9	4.5	4.8	5.1	4.7	4.5	4.7	4.3	4.3	4.2	4.4	4.0	4.8	5.3	5.1	5.0	4.6	5.2	4.0	4.4	3.5	3.4	3.6
\$150,001 - \$200,000	4.3	4.0	4.2	4.5	4.0	3.8	3.9	3.8	3.0	2.9	3.2	3.2	3.1	3.9	3.4	4.0	3.6	3.8	3.7	3.4	3.1	3.3	2.8	3.1
\$200,001 - \$250,000	2.8	3.1	2.9	2.9	3.4	2.8	3.2	2.9	2.6	2.6	2.4	2.4	2.4	3.0	3.0	3.1	3.2	2.9	3.8	3.0	3.2	3.5	3.2	3.1
\$250,001 - \$300,000	3.6	3.6	3.3	3.5	3.4	3.4	3.2	3.0	2.9	2.7	2.6	2.8	1.9	3.0	2.8	2.6	2.5	2.3	2.5	2.6	2.0	2.4	2.0	2.4
\$300,001 - \$375,000	3.4	4.1	3.6	4.0	4.2	3.5	3.6	3.2	2.9	2.5	2.6	2.5	1.5	2.3	2.7	2.6	2.5	2.9	2.8	2.3	2.4	2.3	2.5	2.2
\$375,001 - \$475,000	3.4	3.5	3.8	3.5	3.8	3.4	3.7	3.6	2.8	2.9	2.9	3.0	2.1	3.1	3.0	2.8	3.0	3.1	2.7	2.9	2.7	2.6	2.2	2.4
\$475,001 - \$700,000	4.6	4.8	5.0	4.9	5.1	4.7	4.8	4.8	4.5	4.5	4.3	4.2	3.1	4.5	4.6	4.9	4.6	4.3	4.1	3.9	3.6	3.5	3.2	2.9
\$700,001 and above	8.7	8.9	8.7	9.3	10.0	9.6	10.3	10.1	9.5	9.6	9.1	9.5	9.1	10.4	10.2	11.1	10.3	10.6	10.5	9.9	9.9	9.2	8.9	8.9
All Condos	4.2	4.4	4.3	4.4	4.6	4.2	4.4	4.2	3.8	3.7	3.7	3.8	3.0	4.0	4.1	4.2	4.0	4.0	4.0	3.7	3.6	3.5	3.3	3.3

SOURCE: Honolulu Board of REALTORS®, compiled from MLS data.

# Closed Sales

## Single Family Homes and Condos

OAHU, HAWAII: Jan 1987 to the Present



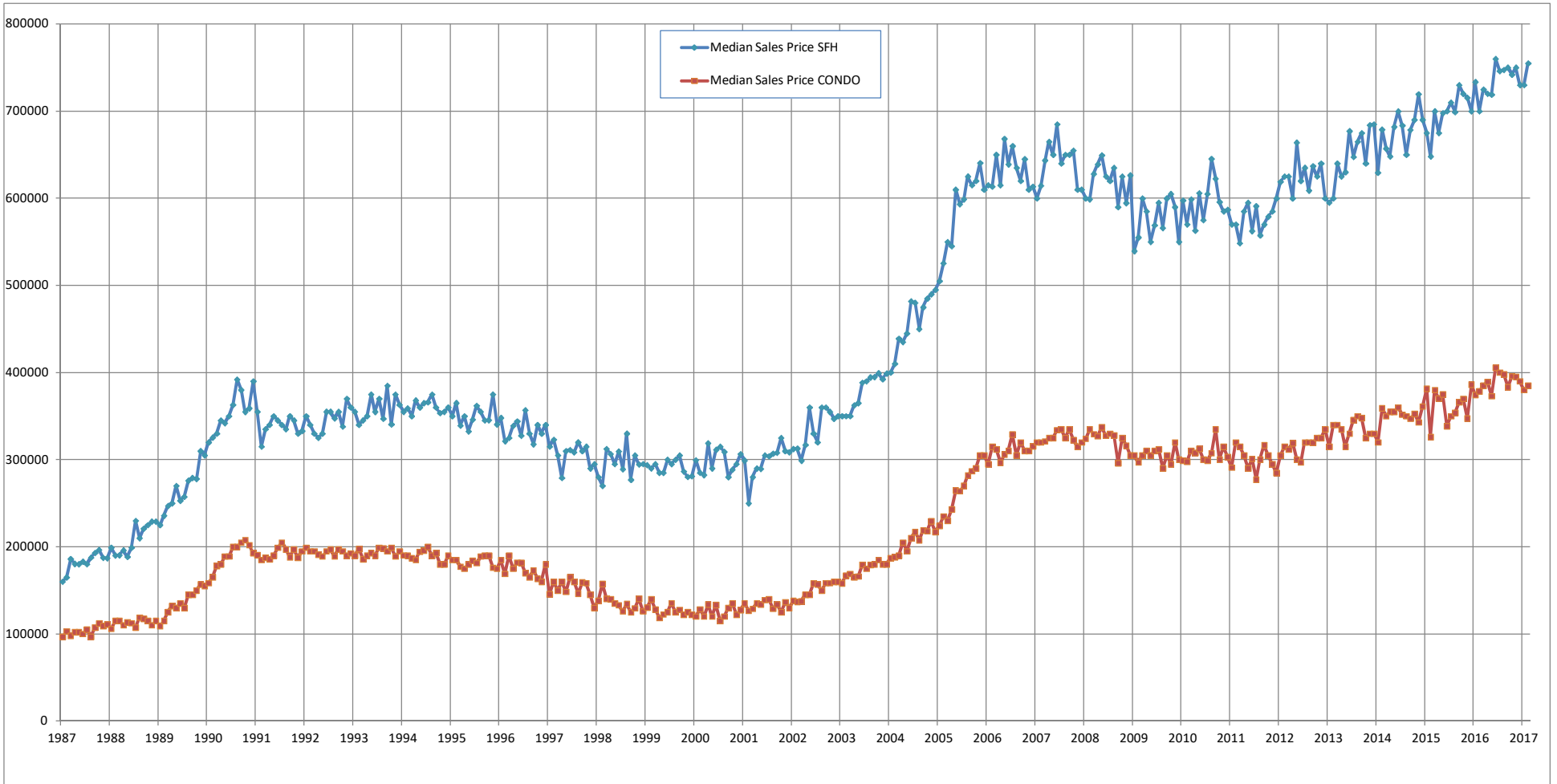
SOURCE: Honolulu Board of REALTORS® , compiled from MLS data.



# Median Sales Price

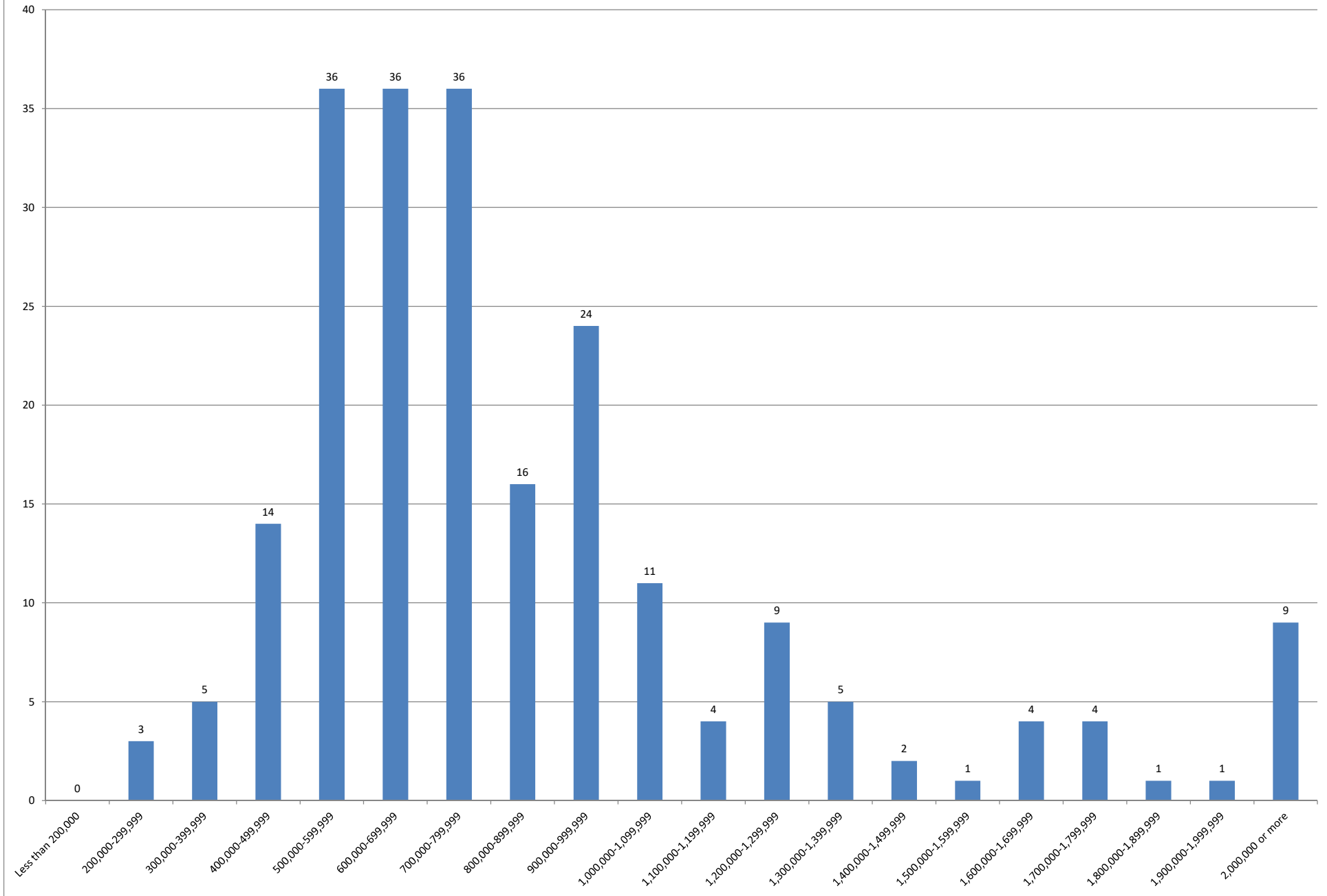
## Single Family Homes and Condos

OAHU, HAWAII: Jan 1987 to the Present



SOURCE: Honolulu Board of REALTORS®, compiled from MLS data.

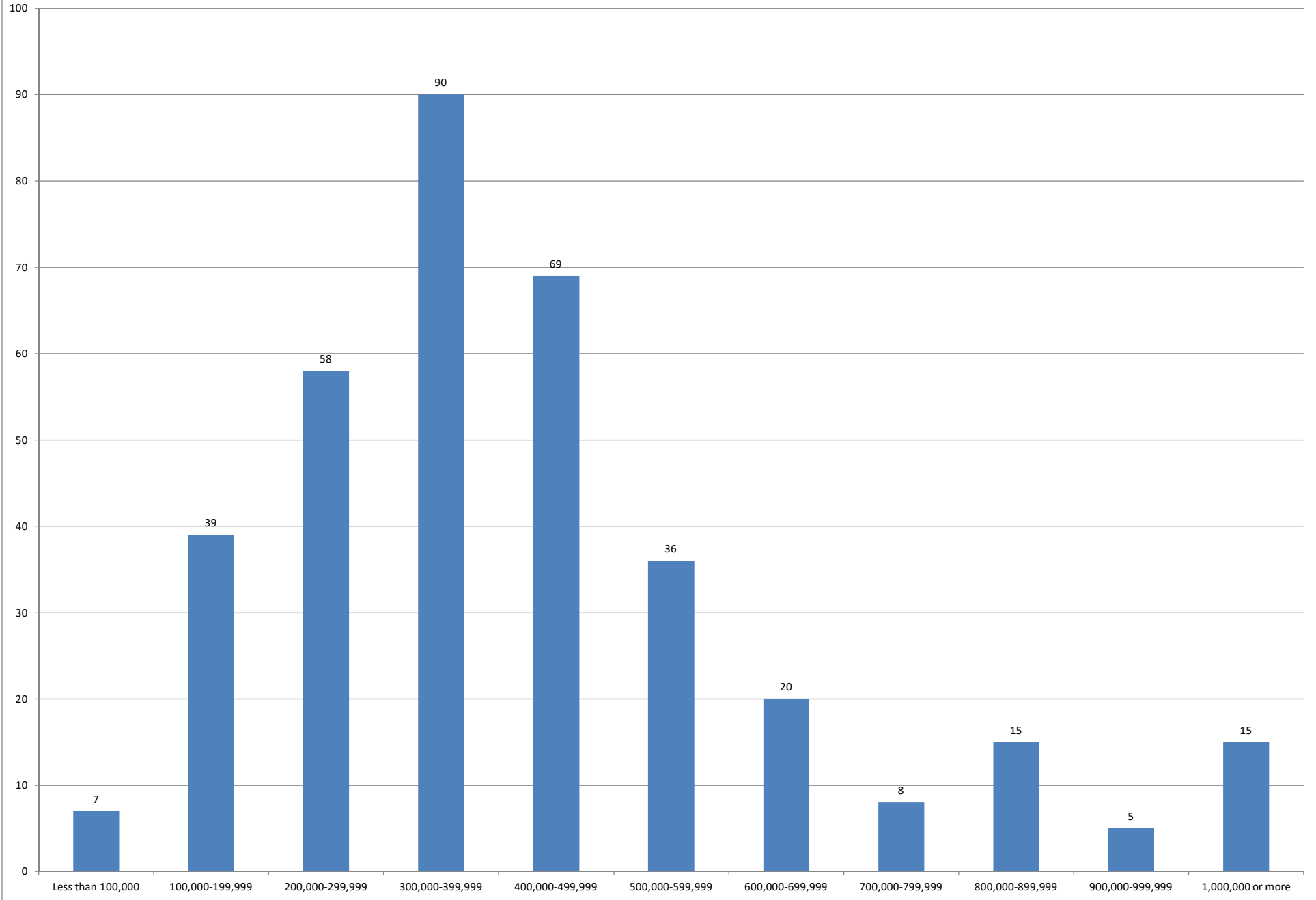
### February 2017 Single Family Homes Sold



SOURCE: Honolulu Board of REALTORS®, compiled from MLS data.



### February 2017 Condos Sold



SOURCE: Honolulu Board of REALTORS®, compiled from MLS data.

